

F.A.U. RTE.	SECTION	COUNTY	TOTAL SHEETS	SHEET NO.
3782	10-00093-00-RS	COOK	17	1
ILLINOIS		CONTRACT NO. 63600		

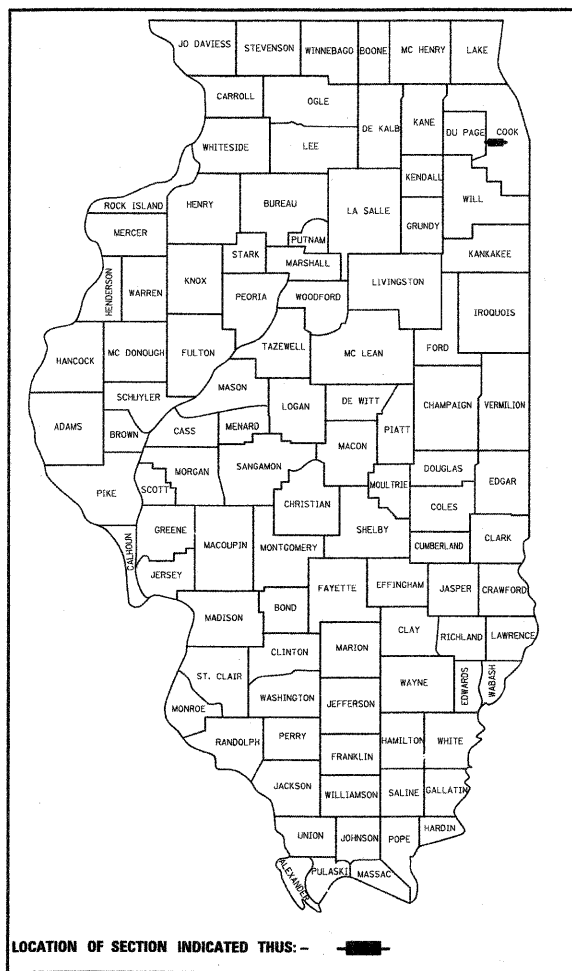
STATE OF ILLINOIS
DEPARTMENT OF TRANSPORTATION
DIVISION OF HIGHWAYS

FOR INDEX OF SHEETS, SEE SHEET NO. 2

**PLANS FOR PROPOSED
FEDERAL AID HIGHWAY**

F.A.U. 3782 (HILLGROVE AVENUE)
F.A.U. 1697 (HAMPTON AVE.) TO F.A.U. 2689 (WOLF RD.)

RESURFACING
SECTION: 10-00093-00-RS
PROJECT: M-9003(718)
VILLAGE OF WESTERN SPRINGS
COOK COUNTY
C-91-118-11



LOCATION OF SECTION INDICATED THUS: —

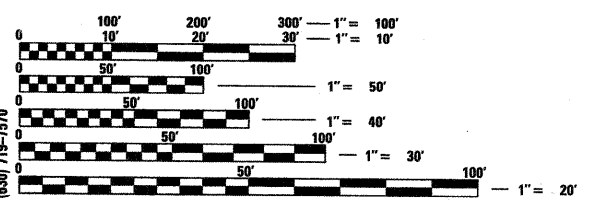
PROGRAM AND OFFICE ENGINEER: CHARLES F. RIDDLE, P.E. (847) 705-4406, SCHAMBAURG, IL
CONSULTANT: JAMES J. BENES & ASSOCIATES, INC. (630) 719-7570

TRAFFIC DATA
ADT:
HILLGROVE AVENUE = 5000(2020)

POSTED SPEED LIMIT:
HILLGROVE AVENUE = 25 MPH

DESIGN DESIGNATION:
HILLGROVE AVENUE = COLLECTOR-URBAN

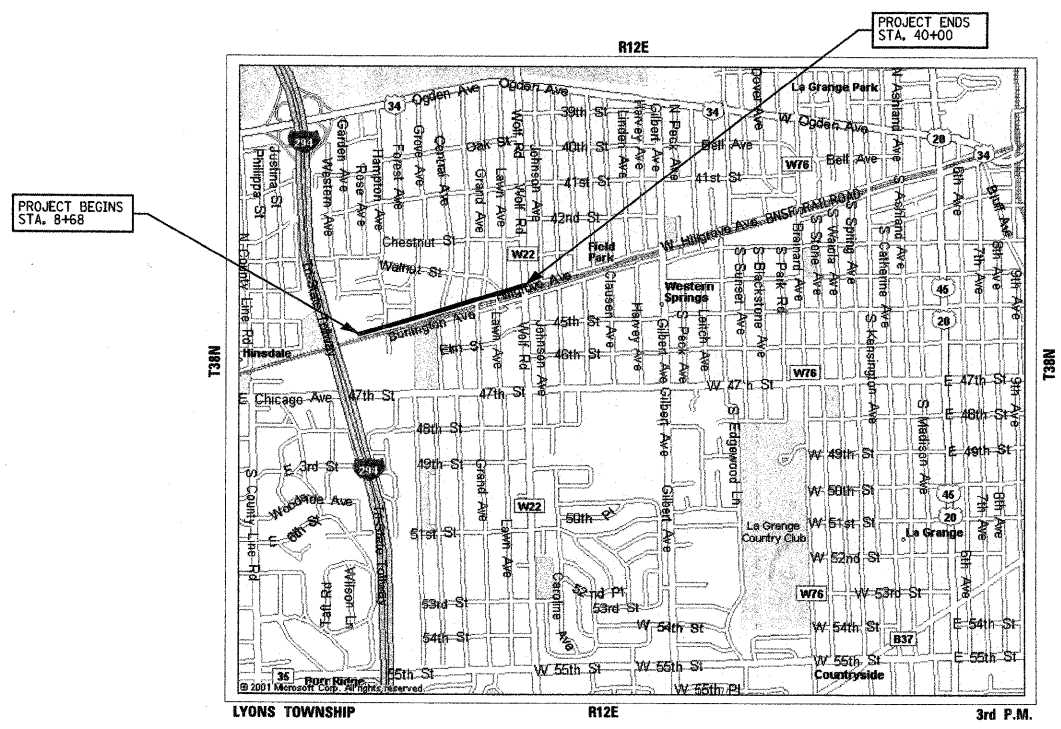
PROJECT LOCATED IN
VILLAGE OF WESTERN SPRINGS



FULL SIZE PLANS HAVE BEEN PREPARED USING STANDARD ENGINEERING SCALES. REDUCED SIZED PLANS WILL NOT CONFORM TO STANDARD SCALES. IN MAKING MEASUREMENTS ON REDUCED PLANS, THE ABOVE SCALES MAY BE USED.

J.U.L.I.E.
JOINT UTILITY LOCATION INFORMATION FOR EXCAVATION
1-800-892-0123
OR 811

CONTRACT NO. 63600



LOCATION MAP
SCALE: NTS
GROSS & NET LENGTH OF PROJECT: 3,132 FT. (0.59 MILES)

STATE OF ILLINOIS
DEPARTMENT OF TRANSPORTATION
DIVISION OF HIGHWAYS

APPROVED: *[Signature]* 2011 03/21/11
Village of Western Springs,
Assistant Director of Municipal Services

PASSED: APRIL 11 2011
[Signature]
District 1 Engineer of Local Roads & Streets

Releasing for Bid
Based on Limited
Review APRIL 11, 2011
Diana M. O'Keefe
Deputy Director of Highways, Region 1 Engineer

PRINTED BY AUTHORITY OF THE STATE OF ILLINOIS
JAMES J. BENES & ASSOCIATES, INC.

JAMES J. BENES & ASSOCIATES
CONSULTING ENGINEERS
950 WARRENVILLE ROAD, SUITE 101
LISLE, IL 60532
(630) 719-7570
SIGNATURE: *[Signature]*
DATE: 03/21/11
P.L. LICENSE NO: 062-034438
EXP. DATE: NOVEMBER 30, 2011
FIELD: JAMES J. BENES AND ASSOCIATES, INC.
CIVIL ENGINEERING

INDEX OF SHEETS

SHEET NO.	TITLE
1	TITLE SHEET
2	INDEX OF SHEETS, GENERAL NOTES AND STATE STANDARDS
3	SUMMARY OF QUANTITIES
4	SCHEDULES OF QUANTITIES
5	EXISTING TYPICAL SECTIONS
6	PROPOSED TYPICAL SECTIONS
7-8	RESURFACING PLAN
9-10	PAVEMENT MARKING PLAN
11	CONSTRUCTION DETAILS
12-17	DISTRICT DETAILS

LIST OF STATE STANDARDS

000001-06	STANDARD SYMBOLS, ABBREVIATIONS AND PATTERNS
424001-05	CURB RAMPS FOR SIDEWALKS
442201-03	CLASS C AND D PATCHES
604001-03	FRAME AND LIDS TYPE 1
604091-02	FRAME AND GRATE TYPE 24
606001-04	CONCRETE CURB TYPE B AND COMBINATION CONCRETE CURB AND GUTTER
701301-04	LANE CLOSURE, 2L, 2W, SHORT TIME OPERATIONS
701501-06	URBAN LANE CLOSURE, 2L, 2W, UNDIVIDED
701606-07	URBAN LANE CLOSURE, MULTILANE, 2W WITH MOUNTABLE MEDIAN
701801-04	LANE CLOSURE MULTILANE 1W OR 2W CROSSWALK OR SIDEWALK CLOSURE
701901-01	TRAFFIC CONTROL DEVICES

LIST OF DISTRICT ONE DETAILS

BD-08	DETAIL FOR FRAMES AND LIDS ADJUSTMENT WITH MILLING
BD-22	PAVEMENT PATCHING FOR HMA SURFACED PAVEMENT
BD-32	BUTT JOINT AND HMA TAPER DETAILS
TC-10	TRAFFIC CONTROL AND PROTECTION FOR SIDE ROADS, INTERSECTIONS, AND DRIVEWAYS
TC-13	DISTRICT ONE TYPICAL PAVEMENT MARKINGS
TC-16	PAVEMENT MARKING LETTERS AND SYMBOLS FOR TRAFFIC STAGING

COMMITMENTS: NONE

GENERAL NOTES

- ACCESS TO LOCAL RESIDENCES AND BUSINESSES SHALL BE MAINTAINED DURING CONSTRUCTION.
- THE CONTRACTOR SHALL GIVE THE MUNICIPALITY AND JAMES J. BENES AND ASSOCIATES, INC. THREE (3) WORKING DAYS NOTICE PRIOR TO THE COMMENCEMENT OF WORK. (VILLAGE OF WESTERN SPRINGS: (708) 246-1800) JAMES J. BENES AND ASSOCIATES, INC.: (630) 719-7570
- THE ENGINEER SHALL NOT ASSUME ANY OF THE RESPONSIBILITIES OF THE CONTRACTOR'S SUPERINTENDENT OR OF SUBCONTRACTORS. ADDITIONALLY, THE ENGINEER, SHALL ADVISE ON, OR ISSUE DIRECTIONS CONCERNING, ASPECTS OF CONSTRUCTION MEANS, METHODS, TECHNIQUES, SEQUENCES OR PROCEDURES, OR SAFETY PRECAUTIONS AND/OR PROGRAMS IN CONNECTION WITH THE WORK.
- THE LOCATIONS OF PUBLIC OR PRIVATE UTILITIES SHOWN ON THE PLANS ARE APPROXIMATE AND THEIR ACCURACY IS NOT GUARANTEED. THE CONTRACTOR SHALL VERIFY THE EXACT LOCATION AND ELEVATION OF ALL UTILITIES. THE CONTRACTOR SHALL REPORT ANY ENCOUNTERED DISCREPANCIES TO THE ENGINEER AT ONCE. THE CONTRACTOR SHALL TAKE DUE CARE IN ALL PHASES OF CONSTRUCTION TO PROTECT ANY UTILITIES WHICH MAY BE AFFECTED BY THE WORK. ANY DAMAGE TO EXISTING UTILITIES SHALL BE REPAIRED AT THE CONTRACTOR'S EXPENSE.
- THE CONTRACTOR SHALL KEEP THE CONSTRUCTION AREA FREE OF DEBRIS AND/OR OBJECTIONABLE MATERIALS DURING CONSTRUCTION.
- THE CONTRACTOR SHALL MAINTAIN ALL EXISTING DRAINAGE FACILITIES DURING CONSTRUCTION AND SHALL REPAIR ANY DRAINAGE FACILITIES DAMAGED DURING CONSTRUCTION. THIS WORK SHALL BE CONSIDERED AS INCLUDED IN THE CONTRACT AND WILL NOT BE PAID FOR SEPARATELY.
- BEFORE STARTING AND EXCAVATION, THE CONTRACTOR SHALL CALL "JULIE" AT 1-800-892-0123 FOR FIELD LOCATIONS OF BURIED ELECTRIC, TELEPHONE AND GAS FACILITIES. (48 HOUR NOTIFICATION IS REQUIRED)
- UNLESS OTHERWISE SHOWN, TRANSITIONS OF 10' SHALL BE USED TO MATCH PROPOSED CURB AND GUTTER AND MEDIAN ITEMS OF WORK TO EXISTING CURB AND GUTTERS AND MEDIANS IN THE FIELD. THE TRANSITIONS SHALL BE PAID FOR AT THE CONTRACT UNIT PRICE FOR THE PROPOSED ITEMS OF WORK SPECIFIED.
- THE CONTRACTOR SHALL COORDINATE CONSTRUCTION ACTIVITIES WITH UTILITY COMPANIES AND THE MUNICIPALITY.
- SAW CUTTING OF PAVEMENT, SIDEWALK, CURB AND GUTTER, ETC. SHALL BE TO FULL DEPTH AND SHALL RESULT IN CLEAN, STRAIGHT EDGE ON THE PORTION REMAINING. ALL SAW CUTTING SHALL BE CONSIDERED INCLUDED IN THE COST OF THE ITEM REMOVED.
- ALL LABOR, EQUIPMENT AND MATERIAL REQUIRED TO PREPARING THE BASE FOR HOT-MIX ASPHALT PAVING AFTER MILLING THE EXISTING SURFACE SHALL BE CONSIDERED INCLUDED IN THE COST OF THE SURFACE REMOVAL ITEM. THIS WOULD INCLUDE BLOWING OUT CRACK PRIOR TO PLACING MIXTURE FOR CRACKS, JOINTS AND FLANGWAYS.
- BARRICADES: THE CONTRACTOR SHALL PROVIDE AND INSTALL TWO (2) WEIGHTED SANDBAGS ON EACH TYPE I AND TYPE II BARRICADE USED - ONE (1) WEIGHTED SANDBAG ACROSS EACH BOTTOM RAIL.
- WHEN MILLED PAVEMENT IS OPEN TO TRAFFIC, THE MAXIMUM GRADE DIFFERENTIAL BETWEEN PASSES OF THE MILLING MACHINE SHALL NOT EXCEED 1-1/2 INCHES WHERE THE SPEED LIMIT IS 45 MPH OR LESS, AND 1 INCH WHERE THE SPEED LIMIT IS GREATER THAN 45 MPH. WITH WRITTEN APPROVAL FROM THE ENGINEER, A MAXIMUM GRADE DIFFERENTIAL OF 3 INCHES MAY BE ALLOWED IF THE EDGE OF THE MILLING IS SLOPED A MINIMUM OF 1:3 (V:H).
- BUTT JOINTS WILL BE INSTALLED AT THE ENDS OF ALL RESURFACING (WHERE RESURFACING MEETS EXISTING PAVEMENT). IN ACCORDANCE WITH THE "BUTT JOINTS AND HOT-MIX ASPHALT TAPER DETAILS" SHEET INCLUDED IN THE PLANS, UNLESS OTHERWISE SPECIFIED.
- THE RESIDENT ENGINEER SHALL CONTACT THE AREA TRAFFIC FIELD CONTROL ENGINEER AT (847) 705-4470 PRIOR TO PLACEMENT PLACING ANY PAVEMENT MARKINGS.
- THE CONTRACTOR SHALL CONTACT THE TRAFFIC CONTROL SUPERVISOR AT (847) 705-4470 A MINIMUM OF 72 HOURS PRIOR TO THE PLACEMENT OF ANY TEMPORARY TRAFFIC CONTROL DEVICES.
- IT IS THE CONTRACTOR'S SOLE RESPONSIBILITY TO COORDINATE WITH THE BNSF RAILROAD WHENEVER CONSTRUCTION ACTIVITY IS WITHIN 25 FEET OF THE RAILROAD RIGHT-OF-WAY. THE CONTRACTOR SHALL RETAIN FLAGMAN EMPLOYED AND DESIGNATED BY THE BNSF RAILROAD TO MONITOR ONCOMING TRAIN TRAFFIC, AND ADVISE CONTRACTOR PERSONNEL WHEN ACTIVITY ON OR NEAR THE RAILROAD RIGHT-OF-WAY MAY PROCEED. THIS ITEM WILL BE PAID FOR ACCORDING THE ARTICLE 107.12 AND WILL BE REIMBURSED ACCORDING TO ARTICLE 109.05.

MWRD TYPICAL GENERAL NOTES

TYPICAL GENERAL NOTES

- THE MWRD LOCAL SEWER SYSTEMS SECTION FIELD OFFICE MUST BE NOTIFIED AT LEAST TWO (2) WORKING DAYS PRIOR TO THE COMMENCEMENT OF ANY WORK (CALL 708-588-4055).
- ELEVATION DATUM IS U.S.G.S.
- ALL FLOOR DRAINS SHALL DISCHARGE TO THE SANITARY SEWER SYSTEM.
- ALL DOWNSPOUTS AND FOOTING DRAINS SHALL DISCHARGE TO THE STORM SEWER SYSTEM.
- ALL SANITARY SEWER PIPE MATERIALS AND JOINTS (AND STORM SEWER PIPE MATERIALS AND JOINTS IN A COMBINED SEWER AREA) SHALL CONFORM TO:

Pipe Material Spec.	Joint Spec.	Pipe Material Spec.	Joint Spec.
Vitrified Clay Pipe VCP C-700	C-425	PVC Gravity Sewer Pipe 6"-15" dia. SDR 26	
VCP (No-Bell) C-700	C-425	D-3034	D-3212 or D-2855
Joint Collar	D-1784		
Concrete Pipe C-14	C-443	18"-27" dia. F/dy=46	
RCP C-76	C-443	F-679	D-3212 or D-2855
ACP C-428	D-1869		
ABS Sewer Pipe Solid Wall 6" dia. SDR 23.5		CISP A-74 DIP A-21.51	C-564 A-21.11
ABS D-2751	D-2751		
ABS Composite/Truss Pipe 8"-15" dia.			
ABS D-2680	D-2680		

- ALL SANITARY SEWER CONSTRUCTION (AND STORM SEWER CONSTRUCTION IN COMBINED SEWER AREAS), REQUIRES STONE BEDDING WITH STONE 1/2" TO 1" IN SIZE, WITH MINIMUM BEDDING THICKNESS EQUAL TO 1/2 THE OUTSIDE DIAMETER OF THE SEWER PIPE, BUT NOT LESS THAN FOUR (4) INCHES NOR MORE THAN EIGHT (8) INCHES. MATERIAL SHALL BE CA-11 OR CA-13 AND SHALL BE EXTENDED AT LEAST 12" ABOVE THE TOP OF PIPE WHEN USING PVC.
- "BAND SEAL" OR APPROVED EQUAL FLEXIBLE-TYPE COUPLINGS SHALL BE USED IN THE CONNECTION OF SEWER PIPES OF DISSIMILAR MATERIALS.
- WHEN CONNECTING TO AN EXISTING SEWER MAIN BY MEANS OTHER THAN AN EXISTING WYE, TEE, OR AN EXISTING MANHOLE, ONE OF THE FOLLOWING METHODS SHALL BE USED:
 - CIRCULAR SAW-CUT OF SEWER MAIN BY PROPER TOOLS ("SEWER-TAP" MACHINE OR SIMILAR) AND PROPER INSTALLATION OF HUB-WYE SADDLE OR HUB-TEE SADDLE.
 - REMOVE AN ENTIRE SECTION OF PIPE (BREAKING ONLY THE TOP OF ONE BELL) AND REPLACE WITH A WYE OR TEE BRANCH SECTION.
 - WITH PIPE CUTTER, NEATLY AND ACCURATELY CUT OUT DESIRED LENGTH OF PIPE FOR INSERTION OF PROPER FITTING, USING "BAND SEAL" OR APPROVED EQUAL COUPLINGS TO HOLD IT FIRMLY IN PLACE.
- WHENEVER A SANITARY/COMBINED SEWER CROSSES UNDER A WATERMAIN, THE MINIMUM VERTICAL DISTANCE FROM THE TOP OF THE SEWER TO THE BOTTOM OF THE WATERMAIN SHALL BE 18 INCHES. FURTHERMORE, A MINIMUM HORIZONTAL DISTANCE OF 10 FEET BETWEEN SANITARY/COMBINED SEWERS AND WATERMANS SHALL BE MAINTAINED UNLESS: THE SEWER IS LAID IN A SEPARATE TRENCH, KEEPING A MINIMUM 18" VERTICAL SEPARATION; OR THE SEWER IS LAID IN THE SAME TRENCH WITH THE WATERMAIN LOCATED AT THE OPPOSITE SIDE ON A BENCH OF UNDISTURBED EARTH, KEEPING A MINIMUM 18" VERTICAL SEPARATION. IF EITHER THE VERTICAL OR HORIZONTAL DISTANCES DESCRIBED ABOVE CANNOT BE MAINTAINED, OR THE SEWER CROSSES ABOVE THE WATERMAIN, THE SEWER SHALL BE CONSTRUCTED TO WATERMAIN STANDARDS.
- ALL EXISTING SEPTIC SYSTEMS SHALL BE ABANDONED. ABANDONED TANKS SHALL BE FILLED WITH GRANULAR MATERIAL OR REMOVED.
- ALL SANITARY MANHOLES, (AND STORM MANHOLES IN COMBINED SEWER AREAS), SHALL HAVE A MINIMUM INSIDE DIAMETER OF 48 INCHES, AND SHALL BE CAST IN PLACE OR PRE-CAST REINFORCED CONCRETE.
- ALL STRUCTURE (MANHOLE, CATCH BASIN AND INLET) CONNECTIONS SHALL MET THE REQUIREMENTS FOR FLEXIBLE WATER TIGHT CONNECTIONS PER ASTM C923.



JAMES J. BENES & ASSOCIATES, INC.
950 Warrenville Road, Suite 101, Lisle, Illinois 60532
Tel. (630) 719-7570 · Fax (630) 719-7589

FILE NAME =	USER NAME =	DESIGNED -- BDH	REVISED --
		DRAWN -- SMP	REVISED --
		CHECKED -- BDH	REVISED --
		DATE -- 03/01/2011	REVISED --

STATE OF ILLINOIS
DEPARTMENT OF TRANSPORTATION


INDEX OF SHEETS, GENERAL NOTES, AND STATE STANDARDS
HILLGROVE AVENUE

SCALE: NONE SHEET NO. 2 OF 17 SHEETS STA. _____ TO STA. _____

F.A.U. RTE.	SECTION	COUNTY	TOTAL SHEETS	SHEET NO.
3782	10-00093-00-RS	COOK	17	2
				CONTRACT NO. 63600
ILLINOIS FED. AID PROJECT				

SUMMARY OF QUANTITIES				CONSTRUCTION TYPE CODE	
CODE NO.	ITEM	UNIT	TOTAL QUANTITY	ROADWAY	FEE
				70% FED 30% VILLAGE 0005	PARKING 100% VILLAGE 0005
20201200	REMOVAL AND DISPOSAL OF UNSUITABLE MATERIAL	CU YD	465	465	
21001000	GEOTECHNICAL FABRIC FOR GROUND STABILIZATION	SQ YD	1,395	1,395	
25200200	SUPPLEMENTAL WATERING	UNIT	14	14	
40201000	AGGREGATE FOR TEMPORARY ACCESS	TON	100	100	
40600200	BITUMINOUS MATERIALS (PRIME COAT)	TON	19	15	4
40600300	AGGREGATE (PRIME COAT)	TON	61	55	6
40600400	MIXTURE FOR CRACKS, JOINTS, AND FLANGWAYS	TON	28	28	
40600625	LEVELING BINDER (MACHINE METHOD), N50	TON	1,016	908	108
40600982	HOT-MIX ASPHALT SURFACE REMOVAL - BUTT JOINT	SQ YD	177	177	
40603335	HOT-MIX ASPHALT SURFACE COURSE, MIX "D", N50	TON	1,283	1,110	173
42001300	PROTECTIVE COAT	SQ YD	515	515	
42300300	PORTLAND CEMENT CONCRETE DRIVEWAY PAVEMENT, 7 INCH	SQ YD	60	60	
42400200	PORTLAND CEMENT CONCRETE SIDEWALK 5 INCH	SQ FT	1,440	1,440	
42400800	DETECTABLE WARNINGS	SQ FT	176	176	
44000162	HOT-MIX ASHALT SURFACE REMOVAL, 3 1/4"	SQ YD	13,543	12,081	1,462
44000200	DRIVEWAY PAVEMENT REMOVAL	SQ YD	71	71	
44000500	COMBINATION CURB AND GUTTER REMOVAL	FOOT	1,328	1,328	
44000600	SIDEWALK REMOVAL	SQ FT	1,440	1,440	
44201701	CLASS D PATCHES, TYPE I, 5 INCH	SQ YD	40	40	
44201705	CLASS D PATCHES, TYPE II, 5 INCH	SQ YD	125	125	
44201709	CLASS D PATCHES, TYPE III, 5 INCH	SQ YD	210	210	
44201711	CLASS D PATCHES, TYPE IV, 5 INCH	SQ YD	530	530	
44201737	CLASS D PATCHES, TYPE I, 8 INCH	SQ YD	15	15	
44201741	CLASS D PATCHES, TYPE II, 8 INCH	SQ YD	50	50	
44201745	CLASS D PATCHES, TYPE III, 8 INCH	SQ YD	80	80	
44201747	CLASS D PATCHES, TYPE IV, 8 INCH	SQ YD	200	200	
44201785	CLASS D PATCHES, TYPE I, 12 INCH	SQ YD	5	5	
44201789	CLASS D PATCHES, TYPE II, 12 INCH	SQ YD	15	15	
44201794	CLASS D PATCHES, TYPE III, 12 INCH	SQ YD	25	25	
44201796	CLASS D PATCHES, TYPE IV, 12 INCH	SQ YD	30	30	
44300200	STRIP REFLECTIVE CRACK CONTROL TREATMENT	FOOT	2,000	2,000	
60257900	MANHOLES TO BE RECONSTRUCTED	EACH	3	3	

SUMMARY OF QUANTITIES				CONSTRUCTION TYPE CODE	
CODE NO.	ITEM	UNIT	TOTAL QUANTITY	ROADWAY	FEE
				70% FED 30% VILLAGE 0005	PARKING 100% VILLAGE 0005
60266600	VALVE BOXES TO BE ADJUSTED	EACH	1	1	
60300105	FRAMES AND GRATES TO BE ADJUSTED	EACH	9	9	
60404950	FRAMES AND GRATES, TYPE 24	EACH	1	1	
60406000	FRAMES AND LIDS, TYPE 1, OPEN LID	EACH	3	3	
60406100	FRAMES AND LIDS, TYPE 1, CLOSED LID	EACH	21	14	7
60603800	COMBINATION CONCRETE CURB AND GUTTER, TYPE B-6.12	FOOT	1,328	1,328	
67100100	MOBILIZATION	L SUM	1	1	
70102620	TRAFFIC CONTROL AND PROTECTION, STANDARD 701501	L SUM	1	1	
70102625	TRAFFIC CONTROL AND PROTECTION, STANDARD 701606	L SUM	1	1	
70102640	TRAFFIC CONTROL AND PROTECTION, STANDARD 701801	L SUM	1	1	
70300100	SHORT-TERM PAVEMENT MARKING	FOOT	2,060	2,060	
70300210	TEMPORARY PAVEMENT MARKING - LETTERS & SYMBOLS	SQ FT	129.4	129.4	
70300220	TEMPORARY PAVEMENT MARKING - LINE 4"	FOOT	3,946	3,946	
70300240	TEMPORARY PAVEMENT MARKING - LINE 6"	FOOT	241	241	
70300250	TEMPORARY PAVEMENT MARKING - LINE 8"	FOOT	64	64	
70300260	TEMPORARY PAVEMENT MARKING - LINE 12"	FOOT	846	846	
70300280	TEMPORARY PAVEMENT MARKING - LINE 24"	FOOT	175	175	
70301000	WORK ZONE PAVEMENT MARKING REMOVAL	SQ FT	900	900	
78000100	THERMOPLASTIC PAVEMENT MARKING - LETTERS & SYMBOLS	SQ FT	129.4	129.4	
78000200	THERMOPLASTIC PAVEMENT MARKING - LINE 4"	FOOT	3,749	2,323	1,426
78000400	THERMOPLASTIC PAVEMENT MARKING - LINE 6"	FOOT	241	241	
78000500	THERMOPLASTIC PAVEMENT MARKING - LINE 8"	FOOT	64	64	
78000600	THERMOPLASTIC PAVEMENT MARKING - LINE 12"	FOOT	846	846	
78000650	THERMOPLASTIC PAVEMENT MARKING - LINE 24"	FOOT	175	175	
78008210	POLYUREA PAVEMENT MARKING TYPE I - LINE 4"	FOOT	197	197	
Z0042002	POROUS GRANULAR EMBANKMENT, SUBGRADE	CU YD	465	465	
Z0048665	RAILROAD PROTECTIVE LIABILITY INSURANCE	L SUM	1	1	
Z0066500	STABILIZED DRIVEWAYS 7"	SQ YD	11	11	
XX003313	REMOVE AND REINSTALL BRICK PAVER	SQ FT	44	44	
X0321809	PERMANENT GROUND ANCHOR	EACH	64		64
X2520700	SODDING, SPECIAL	SQ YD	600	600	
X6030310	FRAMES AND LIDS TO BE ADJUSTED (SPECIAL)	EACH	24	17	7


LEGEND
 - DENOTES SPECIALTY ITEM

FILE NAME =	USER NAME =	DESIGNED -- BDH	REVISED --
		DRAWN -- SMP	REVISED --
	PLOT SCALE =	CHECKED -- BDH	REVISED --
	PLOT DATE =	DATE -- 03/01/2011	REVISED --

STATE OF ILLINOIS
DEPARTMENT OF TRANSPORTATION

SUMMARY OF QUANTITIES
HILLGROVE AVENUE

SCALE: NONE SHEET NO. 3 OF 17 SHEETS STA. _____ TO STA. _____

		JAMES J. BENES & ASSOCIATES, INC.			
		950 Warrenville Road, Suite 101, Lisle, Illinois 60532			
		Tel. (630) 719-7570 • Fax (630) 719-7589			
F.A.U. RTE.	SECTION	COUNTY	TOTAL SHEETS	SHEET NO.	
3782	10-00093-00-RS	COOK	17	3	
CONTRACT NO. 63600					
ILLINOIS FED. AID PROJECT					

EARTHWORK		
LOCATION	REMOVAL & DISPOSAL OF UNSUITABLE MAT. (CU YD)	FURNISHED EXCAVATION** (CU YD)
HILLGROVE AVENUE UNDERCUTS	465	0
TOTAL QUANTITY =	465	0

*ALL CUT MATERIAL SHALL BE HAULED OFF SITE DUE TO NO ONSITE STORAGE LOCATIONS.
 **ALL FILL MATERIAL (EMBANKMENT) SHALL BE BROUGHT IN FROM OFFSITE LOCATION, SINCE THE ONSITE EXCAVATED MATERIAL MUST BE HAULED OFF SITE.

DRIVEWAY QUANTITY SCHEDULE					
STATION	OFFSET	EXISTING PAVEMENT	DRIVEWAY PAVEMENT REMOVAL (SQ. YD.)	STABILIZED DRIVEWAYS (SQ. YD.)	P.C.C. DRIVEWAY PVMT 7 INCHES (SQ. YD.)
HILLGROVE AVENUE					
20+78	LT	HMA	10.6	10.6	
25+87	LT	P.C.C.	25.0		25.0
30+44	LT	P.C.C.	35.0		35.0
TOTAL QUANTITY =			70.6	10.6	60.0

PORTLAND CEMENT CONCRETE SIDEWALK 5 INCH SIDEWALK REMOVAL		
LOCATION	SIDE	QUANTITY (SQ. FT.)
HILLGROVE AVENUE		
NW RETURN HAMPTON AVENUE STA. 13+06	RT	35
NW RETURN PROSPECT AVENUE STA. 19+07	RT	60
NE RETURN PROSPECT AVENUE STA. 19+07	LT	30
NW RETURN CENTRAL AVENUE STA. 24+65	RT	45
NE RETURN CENTRAL AVENUE STA. 24+65	LT	80
NW RETURN WOODLAND AVENUE STA. 24+65	RT	65
NE RETURN WOODLAND AVENUE STA. 24+65	LT	80
NW RETURN WOODLAND AVENUE STA. 24+65	RT	70
NE RETURN WOODLAND AVENUE STA. 24+65	LT	30
SW RETURN GRAND AVENUE STA. 31+60	RT	75
NW RETURN GRAND AVENUE STA. 31+60	LT	160
NE RETURN GRAND AVENUE STA. 35+15	RT	25
SE RETURN GRAND AVENUE STA. 35+15	LT	45
SE RETURN LAWN AVENUE STA. 35+70	RT	90
SE RETURN LAWN AVENUE STA. 35+70	LT	25
SE RETURN LAWN AVENUE STA. 36+50	RT	160
SE RETURN LAWN AVENUE STA. 37+30	RT	100
SE RETURN LAWN AVENUE STA. 39+60	RT	35
SW RETURN WOLF ROAD	RT	55
TOTAL QUANTITY =		1,440

COMB. CONC. CURB AND GUTTER, TYPE B-6.12 COMBINATION CURB AND GUTTER REMOVAL		
STATION	SIDE	QUANTITY (FEET)
HILLGROVE AVENUE		
10+79	RT	50
11+21	LT	24
11+84	RT	21
12+50	RT	24
12+95	LT	15
12+96	RT	20
13+58	LT	11
13+58	RT	65
15+07	RT	48
18+77	LT	23
19+01	RT	12
19+24	LT	23
20+63	LT	24
23+12	RT	171
24+49	LT	11
24+75	LT	12
24+96	RT	30
25+23	LT	23
25+66	LT	43
26+89	RT	401
27+66	LT	13
28+62	LT	11
29+01	LT	17
30+04	LT	59
30+95	RT	25
31+54	LT	11
32+78	LT	11
35+09	LT	12
35+53	RT	18
35+65	LT	11
36+33	RT	32
37+18	RT	18
39+56	RT	6
39+57	LT	14
39+92	LT	9
40+00	RT	10
TOTAL QUANTITY =		1,328

FRAMES AND LIDS TO BE ADJUSTED (SPECIAL)		
STATION	OFFSET (FEET)	QUANTITY (EACH)
HILLGROVE AVENUE		
18+86	16' LT	1
22+61	32' RT	1
23+75	32' RT	1
24+08	40' RT	1
24+15	32' RT	1
24+63	10' RT	1
24+72	11' RT	1
24+84	22' LT	1
24+91	1' RT	1
25+22	1' LT	1
27+53	41' RT	1
28+65	1' LT	1
28+76	38' RT	1
30+50	38' RT	1
34+78	33' RT	1
34+89	33' RT	1
34+95	9' RT	1
35+05	26' RT	1
35+16	9' RT	1
36+72	1' LT	1
37+66	6' LT	1
38+11	7' LT	1
38+47	25' RT	1
38+71	9' LT	1
TOTAL QUANTITY =		24

FRAMES AND GRATES TO BE ADJUSTED		
STATION	OFFSET (FEET)	QUANTITY (EACH)
HILLGROVE AVENUE		
13+00	1' LT	1
13+00	24' RT	1
13+14	24' RT	1
13+62	1' LT	1
15+43	24' RT	1
18+81	6' LT	1
19+15	9' LT	1
28+83	24' RT	1
40+07	42' RT	1
TOTAL QUANTITY =		9

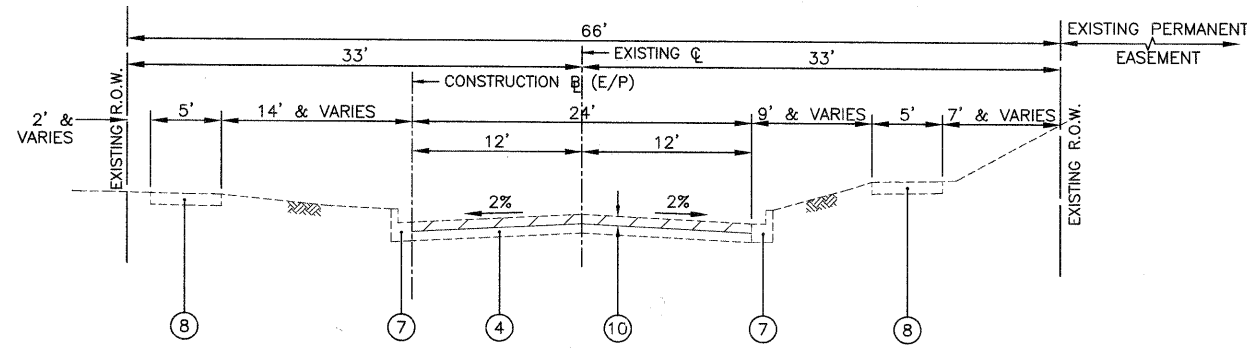
VALVE BOXES TO BE ADJUSTED		
STATION	OFFSET (FEET)	QUANTITY (EACH)
HILLGROVE AVENUE		
26+12	10' RT	1
TOTAL QUANTITY =		1

MANHOLES TO BE RECONSTRUCTED		
STATION	OFFSET (FEET)	QUANTITY (EACH)
HILLGROVE AVENUE		
18+94	1' LT	1
27+26	29' RT	1
32+50	1' LT	1
TOTAL QUANTITY =		3

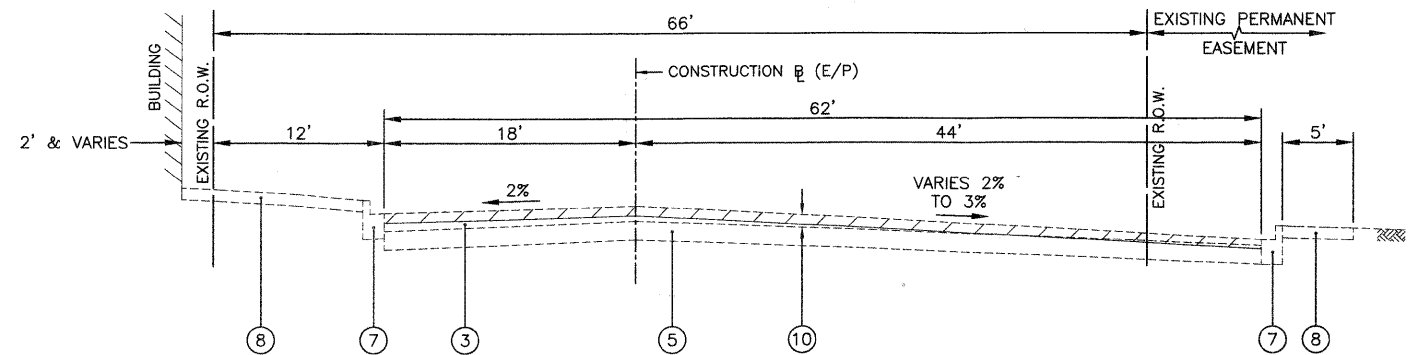
FRAMES AND LIDS, TYPE 1, CLOSED LID		
STATION	OFFSET (FEET)	QUANTITY (EACH)
HILLGROVE AVENUE		
18+86	16' LT	1
18+94	1' LT	1
22+61	32' RT	1
23+75	32' RT	1
24+08	40' RT	1
24+15	32' RT	1
24+72	11' RT	1
24+84	22' LT	1
24+91	1' RT	1
27+26	29' RT	1
27+53	41' RT	1
28+76	38' RT	1
30+50	38' RT	1
32+50	1' LT	1
34+95	9' RT	1
35+05	26' RT	1
35+16	9' RT	1
37+66	6' LT	1
38+11	7' LT	1
38+47	25' RT	1
38+71	9' LT	1
TOTAL QUANTITY =		21

FRAMES AND LIDS, TYPE 1, OPEN LID		
STATION	OFFSET (FEET)	QUANTITY (EACH)
HILLGROVE AVENUE		
13+62	1' LT	1
19+15	9' LT	1
25+22	1' LT	1
TOTAL QUANTITY =		3

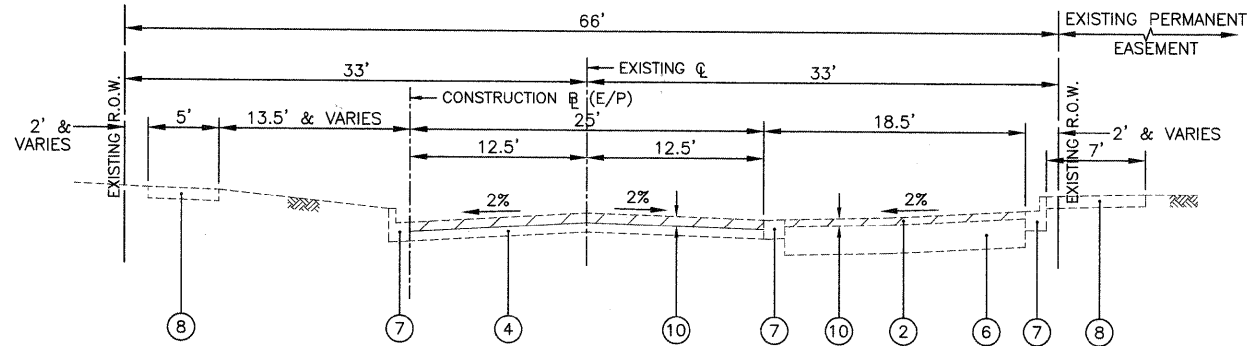
FRAMES AND GRATES, TYPE 24		
STATION	OFFSET (FEET)	QUANTITY (EACH)
HILLGROVE AVENUE		
40+07	42' RT	1
TOTAL QUANTITY =		1



**EXISTING TYPICAL SECTION - HILLGROVE AVENUE
STA. 8+68 TO STA. 22+50**



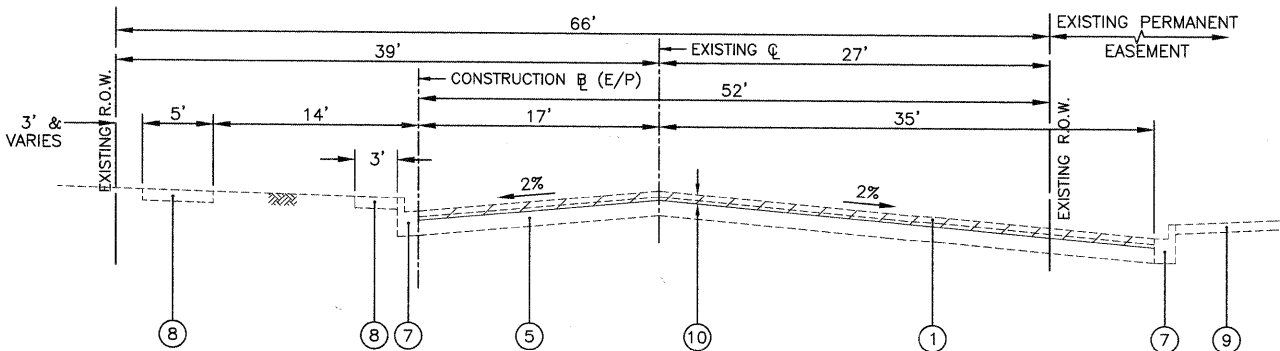
**EXISTING TYPICAL SECTION - HILLGROVE AVENUE
STA. 36+82 TO STA. 40+00**



**EXISTING TYPICAL SECTION - HILLGROVE AVENUE
STA. 22+50 TO STA. 31+41**

LEGEND

- ① EXISTING HOT-MIX ASPHALT PAVEMENT, 2 1/2" AND VARIES
- ② EXISTING HOT-MIX ASPHALT PAVEMENT, 3" AND VARIES
- ③ EXISTING HOT-MIX ASPHALT PAVEMENT, VARIES 2 1/2" TO 8"
- ④ EXISTING HOT-MIX ASPHALT PAVEMENT, 8" AND VARIES
- ⑤ EXISTING P.C.C. PAVEMENT, 8" AND VARIES
- ⑥ EXISTING AGGREGATE BASE COURSE, 12" AND VARIES
- ⑦ EXISTING CONCRETE CURB AND GUTTER, TYPE B-6.12
- ⑧ EXISTING P.C.C. SIDEWALK
- ⑨ EXISTING BRICK PAVERS SIDEWALK
- ⑩ HOT-MIX ASPHALT SURFACE REMOVAL, 3 1/4"
(REMOVAL OF ANY P.C.C. OR AGGREGATE PAVEMENT DURING HMA SURFACE REMOVAL OPERATION SHALL BE INCLUDED IN THE COST OF HOT-MIX ASPHALT SURFACE REMOVAL, 3 1/4")



**EXISTING TYPICAL SECTION - HILLGROVE AVENUE
STA. 31+40 TO STA. 36+82**

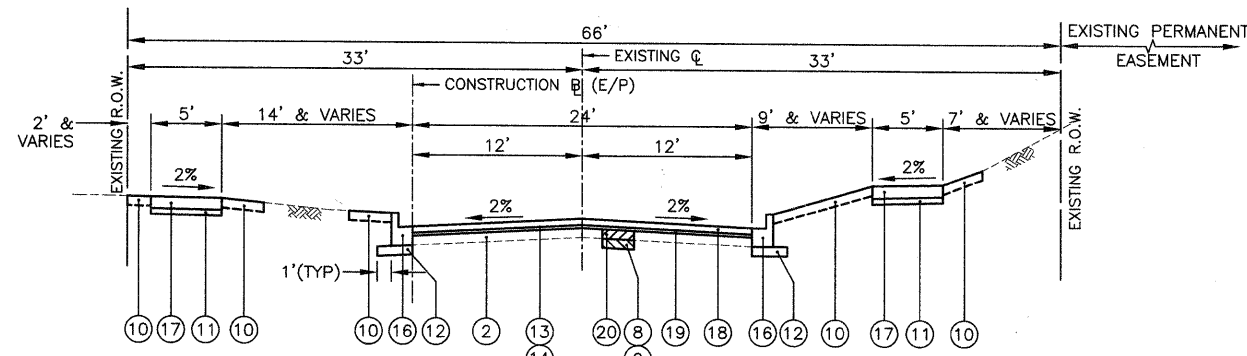
FILE NAME =	USER NAME =	DESIGNED — BDH	REVISED —
		DRAWN — BCD	REVISED —
	PLOT SCALE =	CHECKED — BDH	REVISED —
	PLOT DATE =	DATE — 03/01/2011	REVISED —

**STATE OF ILLINOIS
DEPARTMENT OF TRANSPORTATION**

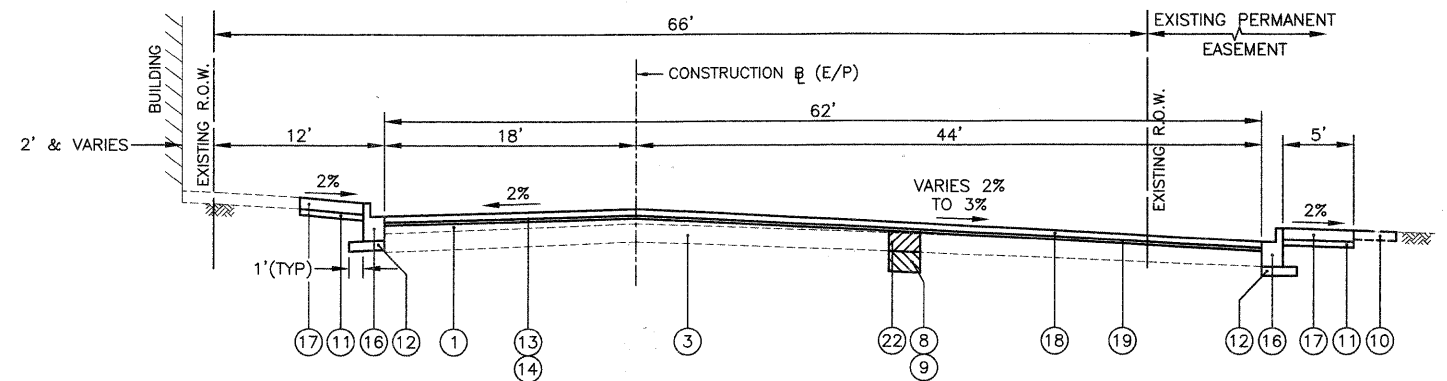
**EXISTING TYPICAL SECTIONS
HILLGROVE AVENUE**

SCALE: NONE SHEET NO. 5 OF 17 SHEETS STA. _____ TO STA. _____

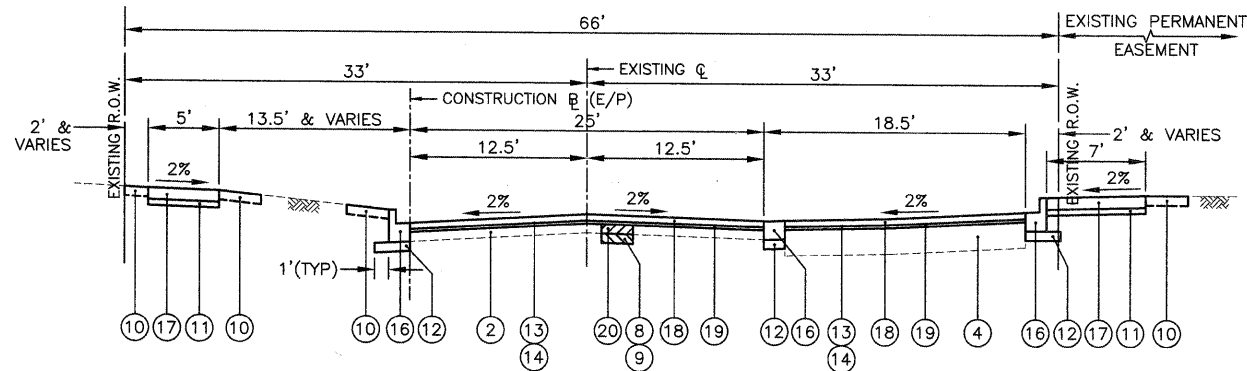
JJB		JAMES J. BENES & ASSOCIATES, INC.		
		950 Warrenville Road, Suite 101, Lisle, Illinois 60532		
		Tel. (630) 719-7570 • Fax (630) 719-7589		
F.A.U. RTE.	SECTION	COUNTY	TOTAL SHEETS	SHEET NO.
3782	10-00093-00-RS	COOK	17	5
			CONTRACT NO. 63600	
ILLINOIS FED. AID PROJECT				



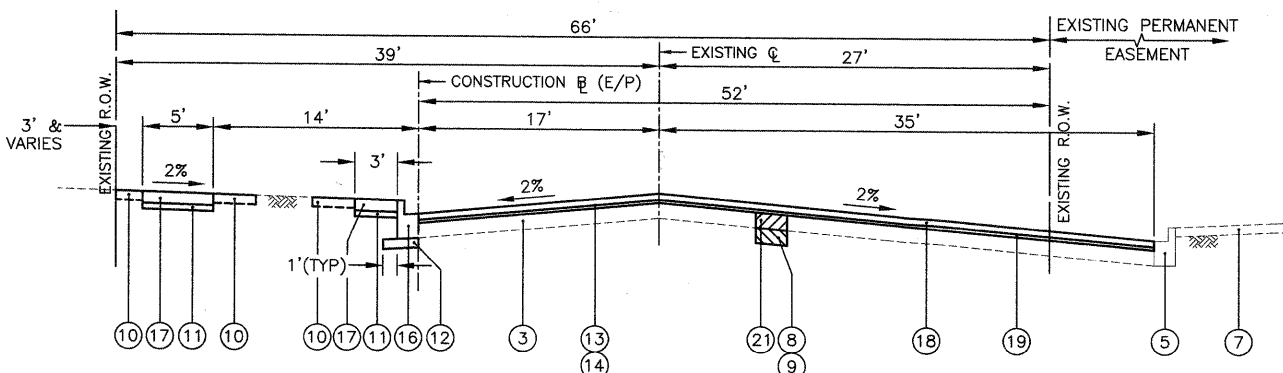
**PROPOSED TYPICAL SECTION - HILLGROVE AVENUE
STA. 8+68 TO STA. 22+50**



**PROPOSED TYPICAL SECTION - HILLGROVE AVENUE
STA. 36+82 TO STA. 40+00**



**PROPOSED TYPICAL SECTION - HILLGROVE AVENUE
STA. 22+50 TO STA. 31+41**



**PROPOSED TYPICAL SECTION - HILLGROVE AVENUE
STA. 31+40 TO STA. 36+82**

LEGEND

- ① EXISTING HOT-MIX ASPHALT PAVEMENT, VARIES 2 1/2" TO 8"
- ② EXISTING HOT-MIX ASPHALT PAVEMENT, 8" AND VARIES
- ③ EXISTING P.C.C. PAVEMENT, 8" AND VARIES
- ④ EXISTING AGGREGATE BASE COURSE, 12" AND VARIES
- ⑤ EXISTING CONCRETE CURB AND GUTTER, TYPE B-6.12
- ⑥ EXISTING P.C.C. SIDEWALK
- ⑦ EXISTING BRICK PAVERS SIDEWALK
- ⑧ POROUS GRANULAR EMBANKMENT, SUBGRADE (AT LOCATIONS DESIGNATED BY THE ENGINEER)
- ⑨ GEOTECHNICAL FABRIC FOR GROUND STABILIZATION (AT LOCATIONS DESIGNATED BY THE ENGINEER)
- ⑩ SODDING, SPECIAL (INCLUDES 4" PULVERIZED TOP SOIL AND FERTILIZER) (AT LOCATIONS DESIGNATED BY THE ENGINEER)
- ⑪ SUB-BASE GRANULAR MATERIAL, TYPE B 2" (COST INCLUDED IN SIDEWALK REMOVAL AND REPLACEMENT)
- ⑫ SUB-BASE GRANULAR MATERIAL, TYPE B 4" (COST INCLUDED IN CONCRETE CURB AND GUTTER REMOVAL AND REPLACEMENT)
- ⑬ AGGREGATE (PRIME COAT)
- ⑭ BITUMINOUS MATERIALS (PRIME COAT)
- ⑮ MIXTURE FOR CRACKS, JOINTS AND FLANGEWAYS
- ⑯ COMBINATION CONCRETE CURB AND GUTTER REMOVAL AND REPLACEMENT (THICKNESS OF GUTTER FLAG SHALL BE 10" EXCEPT WHERE ADJACENT TO PCC PAVEMENT. WHEN ADJACENT TO P.C.C. PAVEMENT, BOTTOM OF GUTTER SHALL BE AT THE SAME GRADE AS THE BOTTOM OF THE P.C.C. PAVEMENT)
- ⑰ SIDEWALK REMOVAL AND REPLACEMENT
- ⑱ HOT-MIX ASPHALT SURFACE COURSE, MIX "D", N50, 2"
- ⑲ LEVELING BINDER (MACHINE METHOD), N50, 1 1/4"
- ⑳ CLASS D PATCHES, 5" (AT LOCATIONS DESIGNATED BY THE ENGINEER)
- ㉑ CLASS D PATCHES, 8" (AT LOCATIONS DESIGNATED BY THE ENGINEER)
- ㉒ CLASS D PATCHES, 12" (AT LOCATIONS DESIGNATED BY THE ENGINEER)

HOT-MIX ASPHALT MIXTURE REQUIREMENTS

MIXTURE TYPE	VOIDS
PAVEMENT RESURFACING	
HOT-MIX ASPHALT SURFACE COURSE, MIX "D" N50, 2" (IL-9.5mm)	4% @ 50 Gyr.
LEVEL BINDER (MACHINE METHOD), N50, 1 1/4" (IL-9.5mm)	4% @ 50 Gyr.
PATCHING	
CLASS D PATCHES 5" (2 LIFTS), 8" (3 LIFTS) & 12" (4 LIFTS) (HMA BINDER IL-19mm)	4% @ 70 Gyr.
DRIVEWAYS	
HOT-MIX ASPHALT BASE COURSE, 5" (HMA BINDER IL-19mm) (2 LIFTS)	4% @ 50 Gyr.
HOT-MIX ASPHALT SURFACE COURSE, MIX "C" N50, 2" (IL-9.5mm)	4% @ 50 Gyr.

NOTE: 1) THE UNIT WEIGHT USED TO CALCULATE ALL HMA QUANTITIES IS 112 LB/SY/IN
 2) THE "AC TYPE" FOR POLYMERIZED HMA MIXES SHALL BE "SBS/SBR PG 70-22" AND FOR NON-POLYMERIZED HMA THE "AC TYPE" SHALL BE "PG 64-22" UNLESS MODIFIED BY DISTRICT ONE SPECIAL PROVISIONS. FOR "PERCENT OF RAP" SEE DISTRICT ONE SPECIAL PROVISIONS.
 3) THE MILLING SHALL BE DONE PRIOR TO PATCHING

FILE NAME =	USER NAME =	DESIGNED -- BDH	REVISED --
		DRAWN -- BCD	REVISED --
		CHECKED -- BDH	REVISED --
		DATE -- 03/01/2011	REVISED --

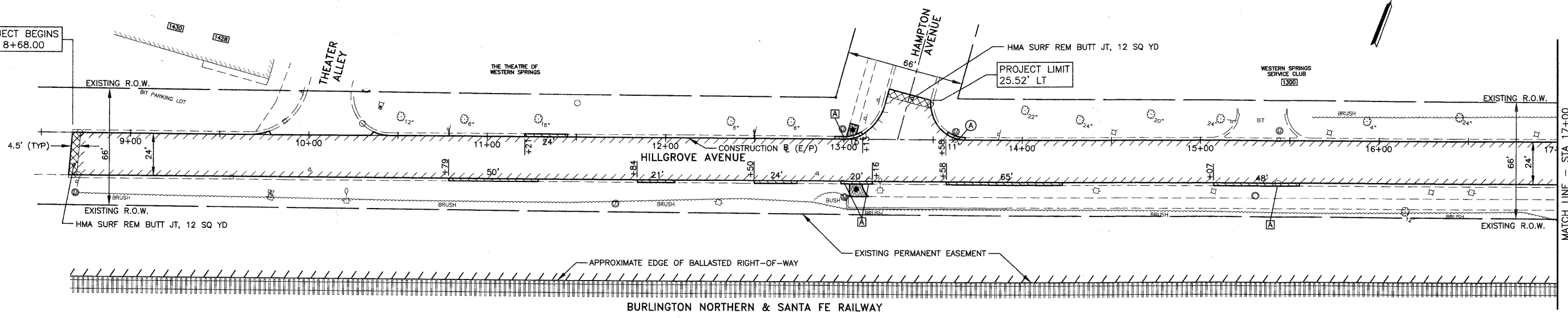
**STATE OF ILLINOIS
DEPARTMENT OF TRANSPORTATION**

**PROPOSED TYPICAL SECTIONS
HILLGROVE AVENUE**

SCALE: NONE SHEET NO. 6 OF 17 SHEETS STA. _____ TO STA. _____

JAMES J. BENES & ASSOCIATES, INC. 950 Warrenville Road, Suite 101, List, Illinois 60532 Tel. (630) 719-7570 • Fax (630) 719-7589				
F.A.U. RTE.	SECTION	COUNTY	TOTAL SHEETS	SHEET NO.
3782	10-00093-00-RS	COOK	17	6
			CONTRACT NO. 63600	
ILLINOIS FED. AID PROJECT				

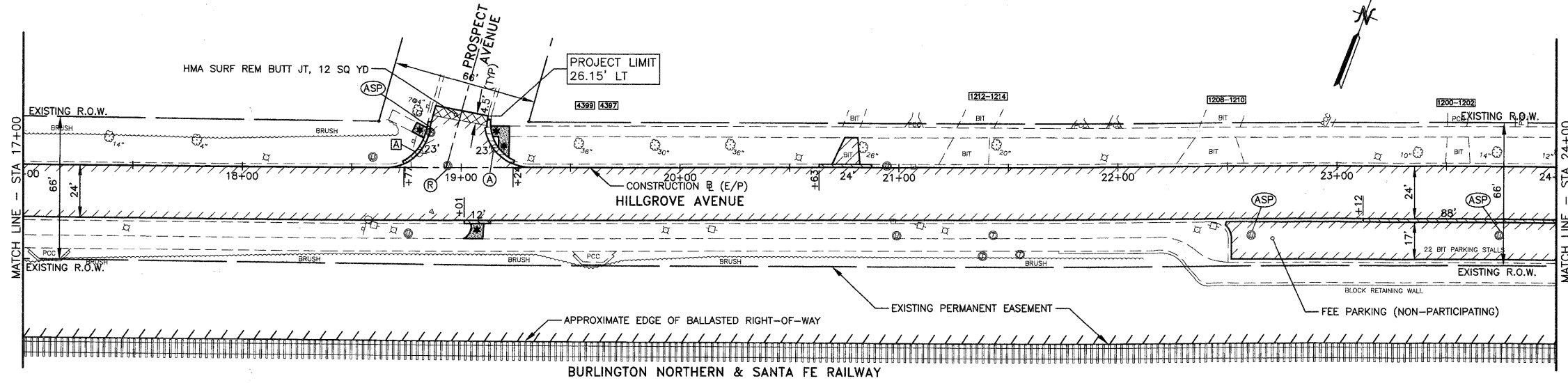
PROJECT BEGINS
STA. 8+68.00



LEGEND

[A] STRUCTURE TO BE ADJUSTED	[REM] STRUCTURE TO BE REMOVED	[EXISTING] VALVE VAULT	[PROPOSED] VALVE VAULT
[R] STRUCTURE TO BE RECONSTRUCTED	[ASP] STRUCTURE TO BE ADJUSTED SPECIAL	[EXISTING] MANHOLE	[PROPOSED] MANHOLE
[F] FILLING EXISTING STRUCTURE	[ASP] STRUCTURE TO BE ADJUSTED SPECIAL WITH NEW FRAME AND LID	[EXISTING] CATCH BASIN	[PROPOSED] CATCH BASIN
[A] STRUCTURE TO BE ADJUSTED WITH NEW FRAME & LID	[*] CURB RAMP ACCESSIBLE TO THE DISABLED	[EXISTING] INLET	[PROPOSED] INLET
[R] STRUCTURE TO BE RECONSTRUCTED WITH NEW FRAME & LID		[EXISTING] FIRE HYDRANT	[PROPOSED] FIRE HYDRANT
[Hatched] SIDEWALK REMOVAL AND REPLACEMENT			
[Hatched] HMA SURFACE REMOVAL-BUTT JOINT			
[Hatched] HMA SURFACE REMOVAL OR DRIVEWAY PAVEMENT REMOVAL			
[Hatched] COMBINATION CONCRETE CURB AND GUTTER REMOVAL AND REPLACEMENT			

HMA SC D N50 (2"), 272 TONS
LEV BIND MM N50 (1 1/4"), 170 TONS
HMA SURF REM 3 1/4", 2273 SY



HMA SC D N50 (2"), 267 TONS
LEV BIND MM N50 (1 1/4"), 167 TONS
HMA SURF REM 3 1/4", 2239 SY

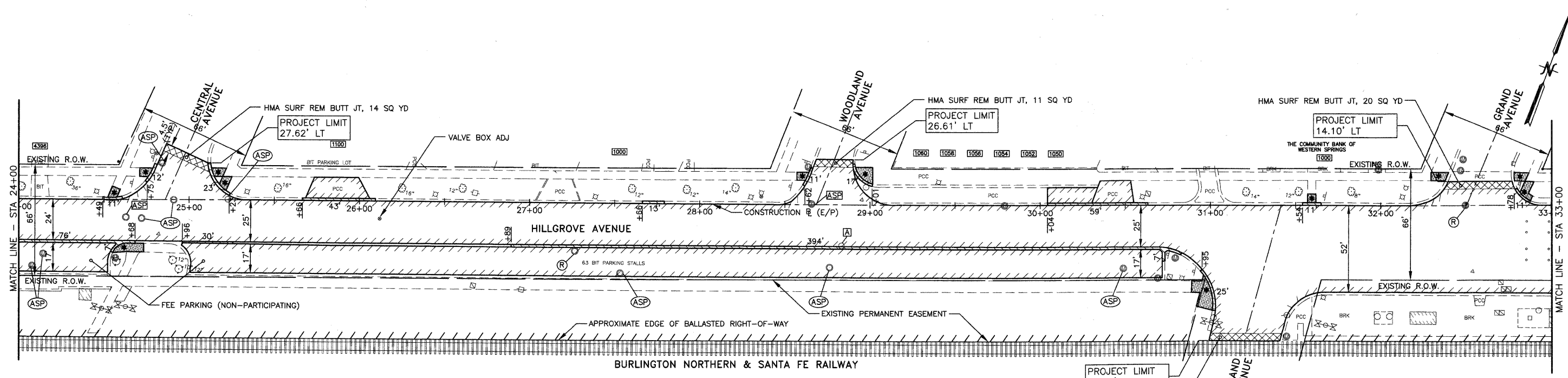
FILE NAME =	USER NAME =	DESIGNED -- BDH	REVISED --
		DRAWN -- SMP	REVISED --
		CHECKED -- BDH	REVISED --
		DATE -- 03/01/2011	REVISED --

**STATE OF ILLINOIS
DEPARTMENT OF TRANSPORTATION**

**RESURFACING PLAN
HILLGROVE AVENUE**

SCALE: 1"=30' SHEET NO. 7 OF 17 SHEETS STA. 8+50 TO STA. 24+00

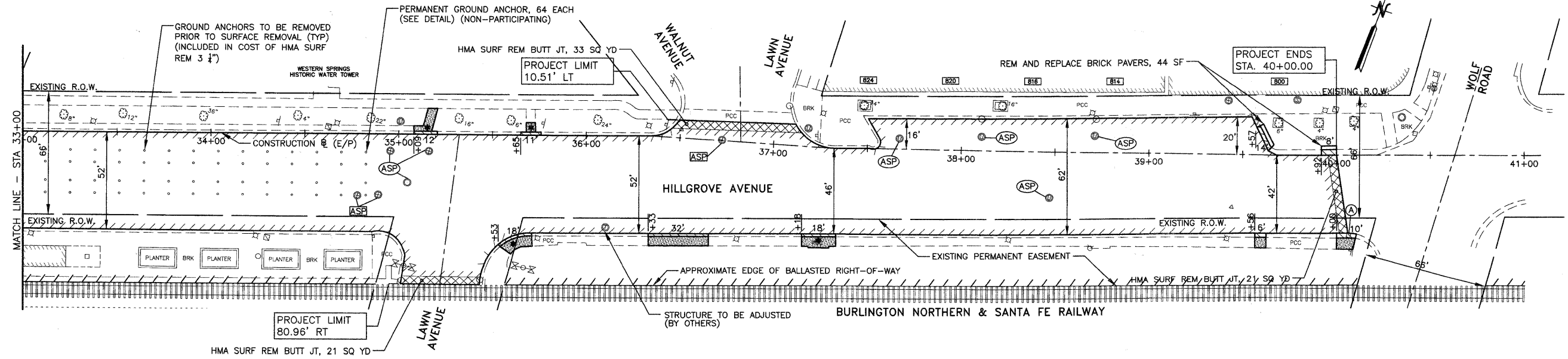
JJB JAMES J. BENES & ASSOCIATES, INC. 950 Warrenville Road, Suite 101, Lisle, Illinois 60532 Tel. (630) 719-7570 • Fax (630) 719-7589				
F.A.U. RTE.	SECTION	COUNTY	TOTAL SHEETS	SHEET NO.
3782	10-00093-00-RS	COOK	17	7
			CONTRACT NO. 63600	
ILLINOIS FED. AID PROJECT				



LEGEND

[A] STRUCTURE TO BE ADJUSTED	[REM] STRUCTURE TO BE REMOVED	EXISTING	PROPOSED
[R] STRUCTURE TO BE RECONSTRUCTED	[ASP] STRUCTURE TO BE ADJUSTED SPECIAL	⊗ VALVE VAULT	⊗
[F] FILLING EXISTING STRUCTURE	[ASP] STRUCTURE TO BE ADJUSTED SPECIAL WITH NEW FRAME AND LID	○ MANHOLE	●
[A] STRUCTURE TO BE ADJUSTED WITH NEW FRAME & LID	* CURB RAMP ACCESSIBLE TO THE DISABLED	○ CATCH BASIN	●
[R] STRUCTURE TO BE RECONSTRUCTED WITH NEW FRAME & LID		□ INLET	■
		○ FIRE HYDRANT	●
[Hatched Box] SIDEWALK REMOVAL AND REPLACEMENT			
[Hatched Box] HMA SURFACE REMOVAL-BUTT JOINT			
[Hatched Box] HMA SURFACE REMOVAL OR DRIVEWAY PAVEMENT REMOVAL			
[Hatched Box] COMBINATION CONCRETE CURB AND GUTTER REMOVAL AND REPLACEMENT			

HMA SC D N50 (2"), 558 TONS
 LEV BIND MM N50 (1 1/4"), 349 TONS
 HMA SURF REM 3 1/4", 4647 SY



HMA SC D N50 (2"), 528 TONS
 LEV BIND MM N50 (1 1/4"), 330 TONS
 HMA SURF REM 3 1/4", 4384 SY

FILE NAME =	USER NAME =	DESIGNED — BDH	REVISED —
		DRAWN — SMP	REVISED —
		CHECKED — BDH	REVISED —
		DATE — 03/01/2011	REVISED —

**STATE OF ILLINOIS
 DEPARTMENT OF TRANSPORTATION**

**RESURFACING PLAN
 HILLGROVE AVENUE**

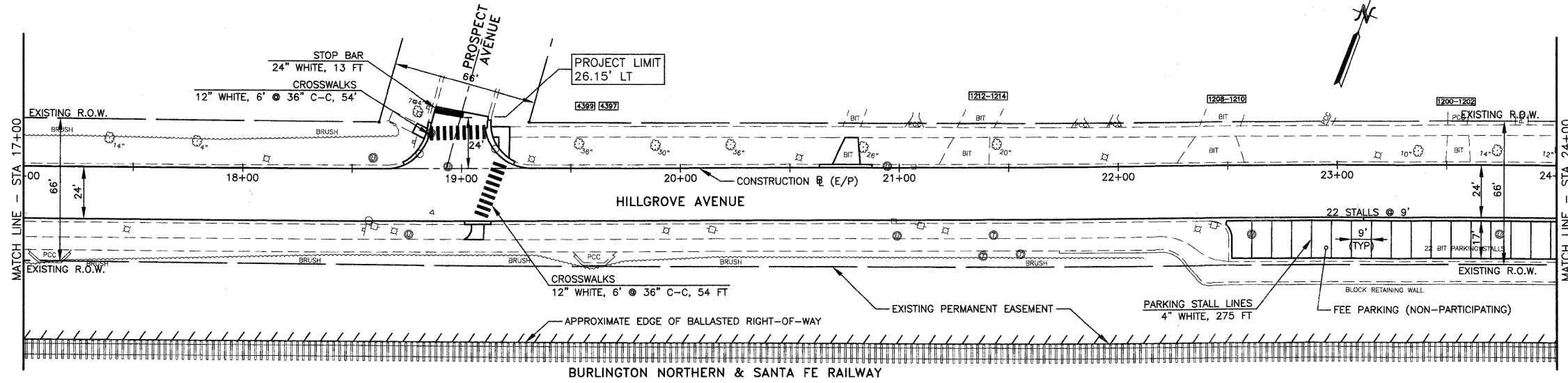
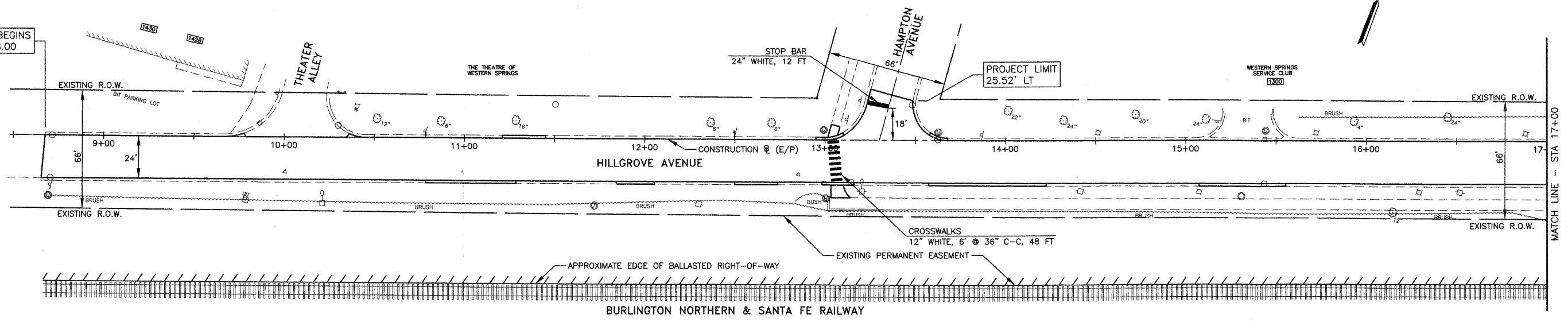
SCALE: 1"=30' SHEET NO. 8 OF 17 SHEETS STA. 24+00 TO STA. 41+00

JJB JAMES J. BENES & ASSOCIATES, INC.
 950 Warrenville Road, Suite 101, Lisle, Illinois 60532
 Tel. (630) 719-7570 • Fax (630) 719-7589

F.A.U. RTE.	SECTION	COUNTY	TOTAL SHEETS	SHEET NO.
3782	10-00093-00-RS	COOK	17	8
CONTRACT NO. 60600			ILLINOIS FED. AID PROJECT	

NOTES:
 1. ALL MARKINGS SHALL BE THERMOPLASTIC PAVEMENT MARKINGS, UNLESS OTHERWISE NOTED.

PROJECT BEGINS
 STA. 8+68.00



JJB JAMES J. BENES & ASSOCIATES, INC.
 950 Warrenville Road, Suite 101, Lisle, Illinois 60532
 Tel. (630) 719-7570 • Fax (630) 719-7589

FILE NAME =	USER NAME =	DESIGNED — BDH	REVISED —
		DRAWN — SMP	REVISED —
		CHECKED — BDH	REVISED —
		DATE — 03/01/2011	REVISED —

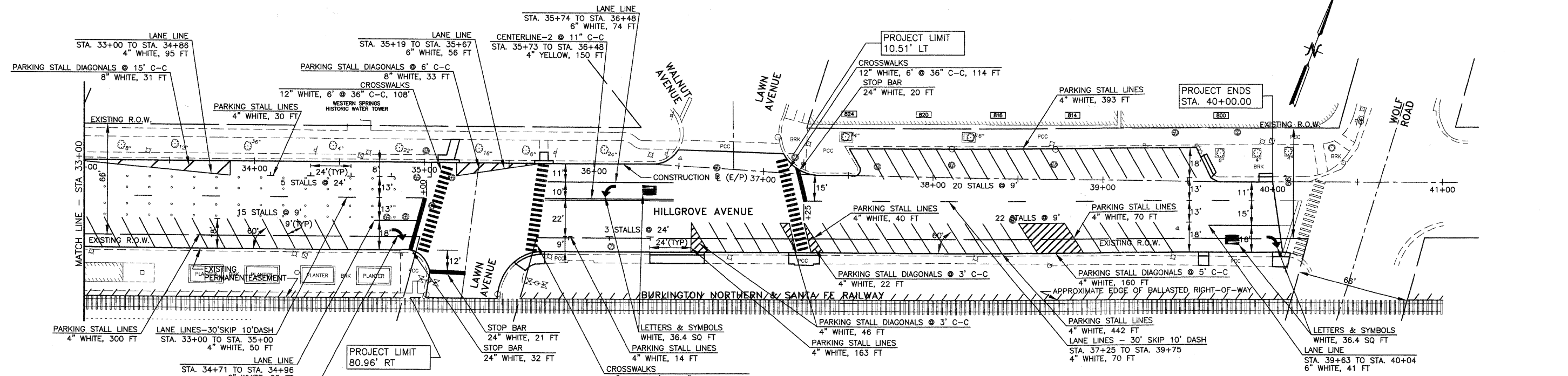
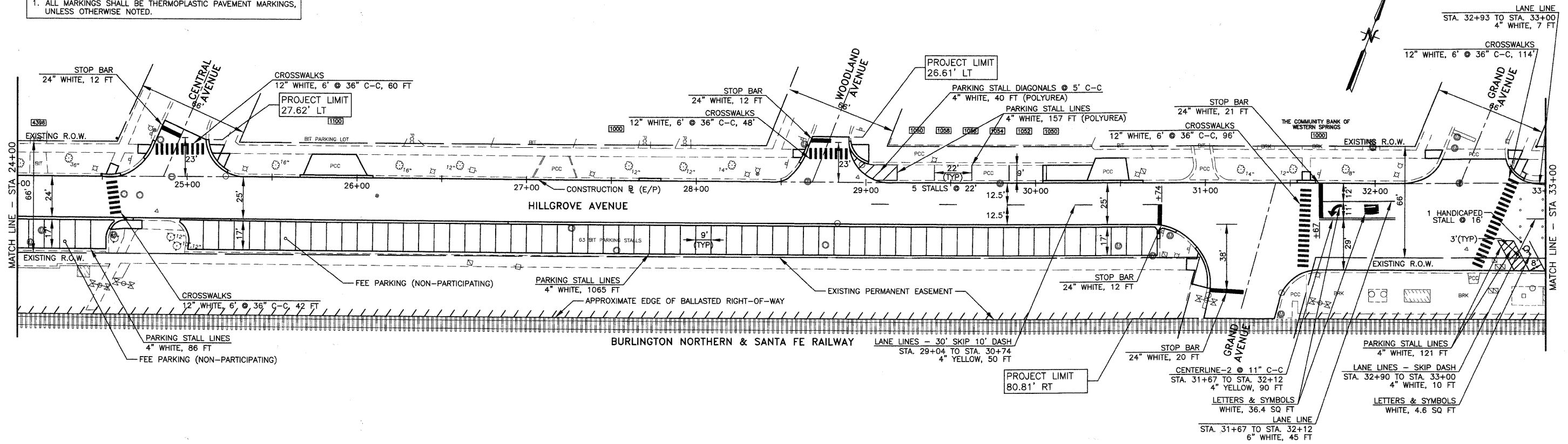
**STATE OF ILLINOIS
 DEPARTMENT OF TRANSPORTATION**

**PAVEMENT MARKING PLAN
 HILLGROVE AVENUE**

SCALE: 1"=30' SHEET NO. 9 OF 17 SHEETS STA. 8+50 TO STA. 24+00

F.A.U. RTE.	SECTION	COUNTY	TOTAL SHEETS	SHEET NO.
3782	10-00093-00-RS	COOK	17	9
CONTRACT NO. 63600				ILLINOIS FED. AID PROJECT

NOTES:
 1. ALL MARKINGS SHALL BE THERMOPLASTIC PAVEMENT MARKINGS, UNLESS OTHERWISE NOTED.



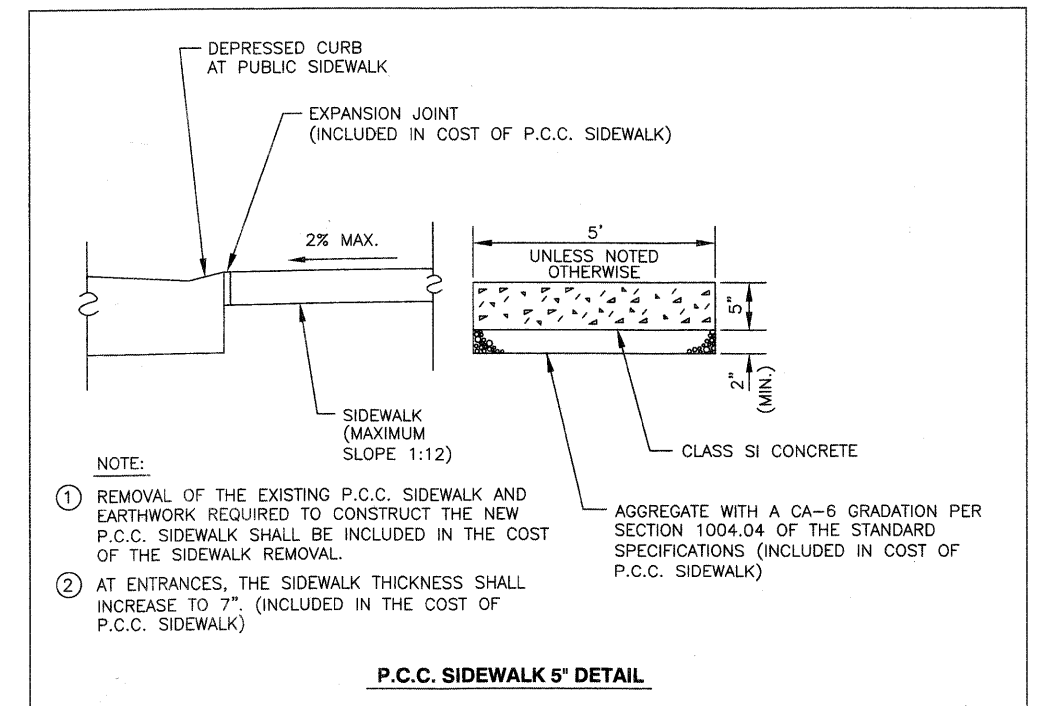
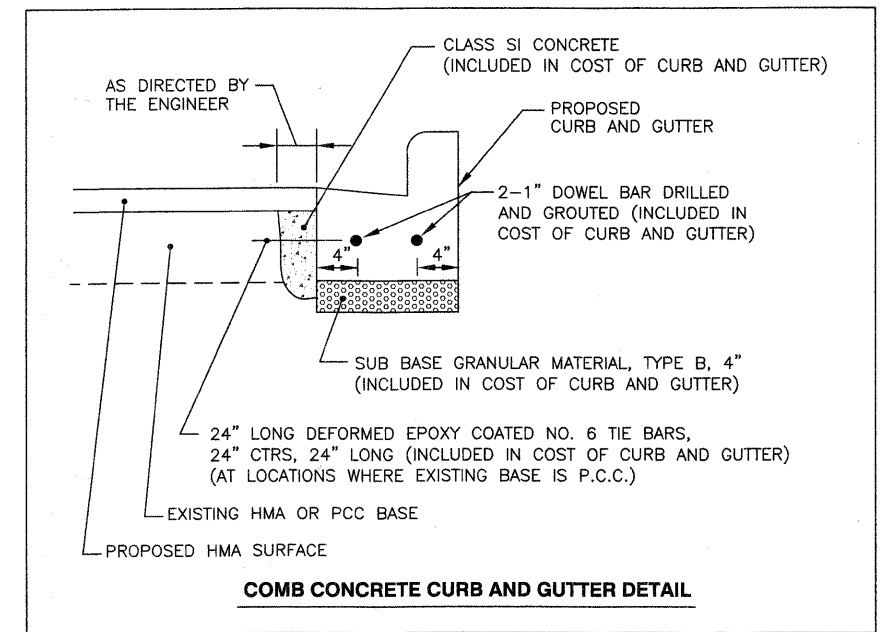
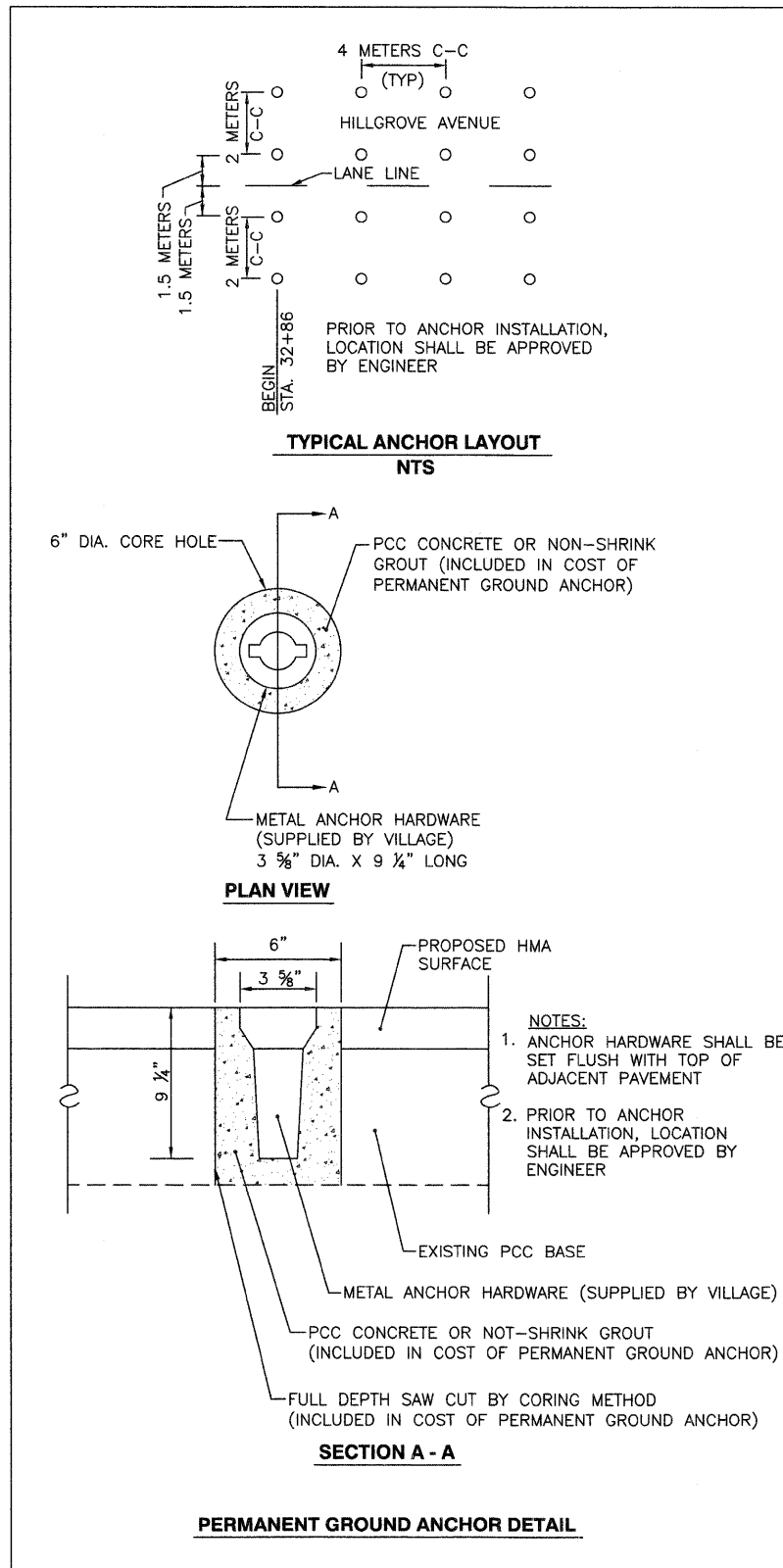
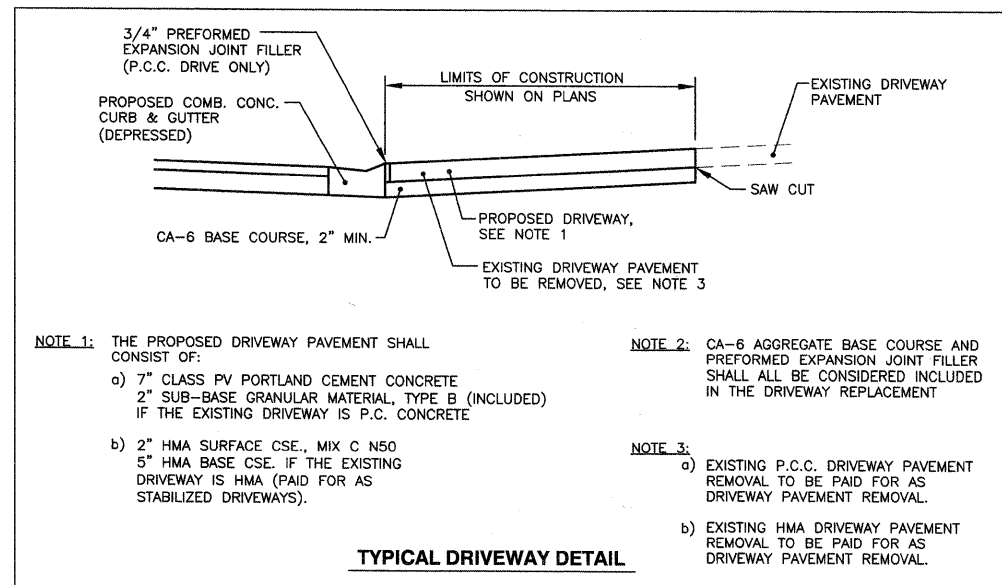
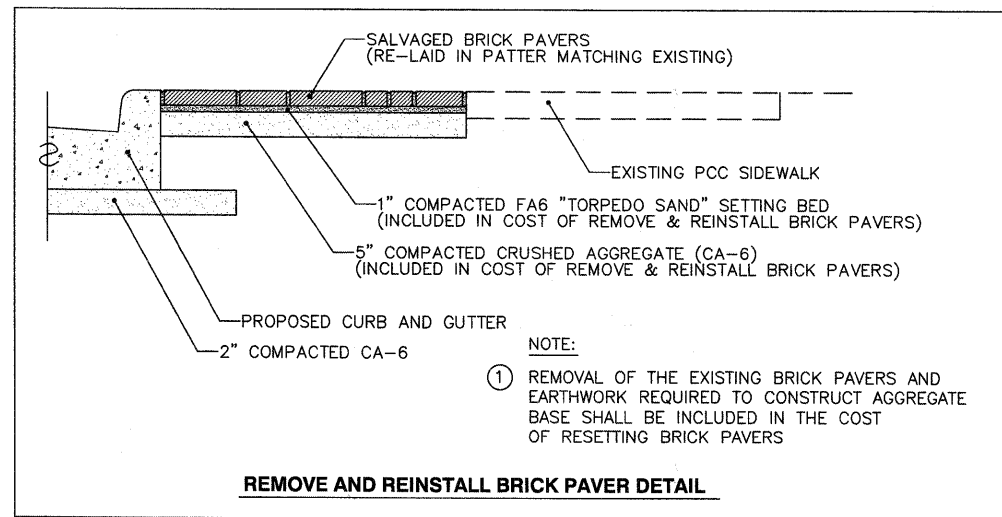
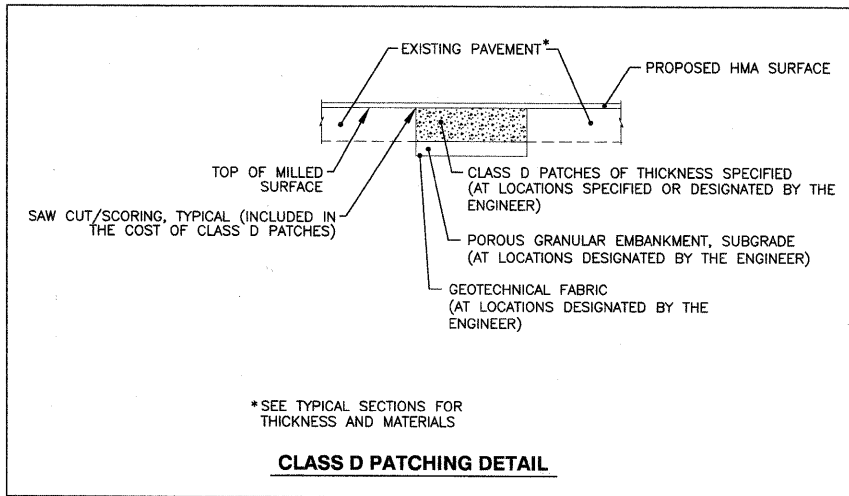
FILE NAME =	USER NAME =	DESIGNED - BDH	REVISED -
		DRAWN - SMP	REVISED -
		CHECKED - BDH	REVISED -
		DATE - 03/01/2011	REVISED -

**STATE OF ILLINOIS
 DEPARTMENT OF TRANSPORTATION**

**PAVEMENT MARKING PLAN
 HILLGROVE AVENUE**

SCALE: 1"=30' SHEET NO. 10 OF 17 SHEETS STA. 24+00 TO STA. 41+00

JJB JAMES J. BENES & ASSOCIATES, INC. 950 Warrenville Road, Suite 101, Lisle, Illinois 60532 Tel. (630) 719-7570 • Fax (630) 719-7589				
F.A.U. RTE.	SECTION	COUNTY	TOTAL SHEETS	SHEET NO.
3782	10-00093-00-RS	COOK	17	10
			CONTRACT NO. 63600	
ILLINOIS FED. AID PROJECT				



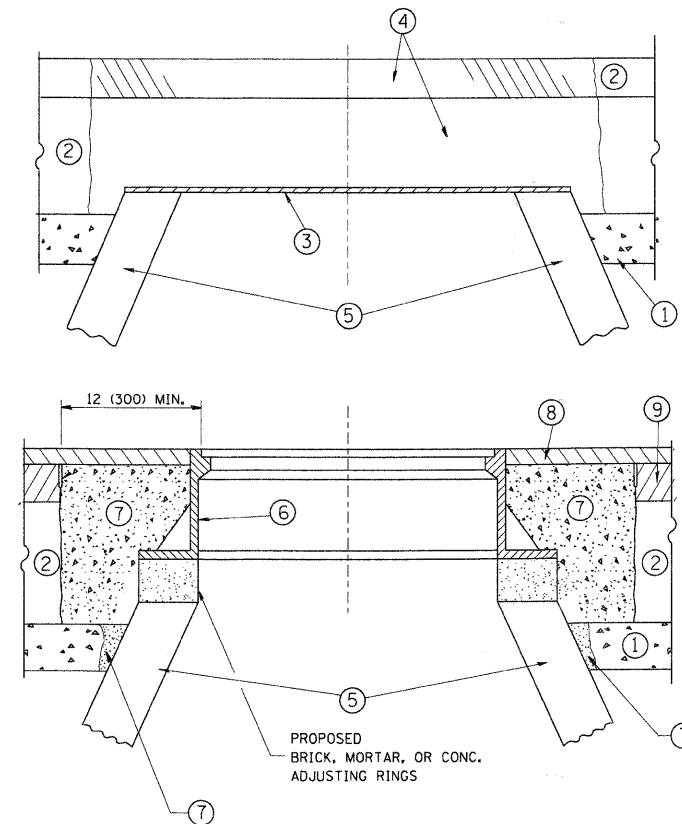
FILE NAME =	USER NAME =	DESIGNED -- BDH	REVISED --
		DRAWN -- SMP	REVISED --
		CHECKED -- BDH	REVISED --
		DATE -- 03/01/2011	REVISED --

STATE OF ILLINOIS
DEPARTMENT OF TRANSPORTATION

CONSTRUCTION DETAILS
HILLGROVE AVENUE

SCALE: NONE SHEET NO. 11 OF 17 SHEETS STA. _____ TO STA. _____

	JAMES J. BENES & ASSOCIATES, INC. 950 Warrenville Road, Suite 101, Lisle, Illinois 60532 Tel. (630) 719-7570 • Fax (630) 719-7589			
	F.A.U. RTE.	SECTION	COUNTY	TOTAL SHEETS
3782	10-00093-00-RS	COOK	17	11
CONTRACT NO. 63600				
ILLINOIS FED. AID PROJECT				



CONSTRUCTION PROCEDURES

STAGE 1 (BEFORE PAVEMENT MILLING)

- A) REMOVE A MINIMUM OF 12 (300) OF THE PAVEMENT FROM AROUND THE STRUCTURE.
- B) REMOVE THE EXISTING FRAME AND LID FROM THE STRUCTURE.
- C) COVER THE STRUCTURE OPENING WITH A 36 (900) DIAMETER METAL PLATE.
- D) BACKFILL WITH CRUSHED STONE AND A MINIMUM 1/2 (40) THICK HMA SURFACE MIX APPROVED BY THE ENGINEER.

STAGE 2 (AFTER PAVEMENT MILLING)

- A) REMOVE THE HMA SURFACE MIX AND CRUSHED STONE.
- B) INSTALL THE FRAME AND LID; ADJUST THE FRAME TO ITS FINAL SURFACE ELEVATION.
- C) THE SURROUNDING SPACE SHALL BE FILLED WITH CLASS PP-1* CONCRETE TO THE ELEVATION OF THE SURFACE OF THE EXISTING BASE COURSE OR THE BINDER COURSE.

*UNLESS OTHERWISE SPECIFIED IN THE PLANS.

THE PROCEDURE EXPLAINED ABOVE SHALL CONFORM TO THE APPLICABLE PORTIONS OF SECTIONS 353, 406, 602, AND 603 OF THE STANDARD SPECIFICATIONS.

LEGEND

- ① SUB-BASE GRANULAR MATERIAL
- ② EXISTING PAVEMENT
- ③ 36 (900) DIAMETER METAL PLATE
- ④ PROPOSED CRUSHED STONE AND HMA SURFACE MIX
- ⑤ EXISTING STRUCTURE
- ⑥ FRAME AND LID (SEE NOTES)
- ⑦ CLASS PP-1* CONCRETE
- ⑧ PROPOSED HMA SURFACE COURSE
- ⑨ PROPOSED HMA BINDER COURSE

LOCATION OF STRUCTURES:

THE CONTRACTOR WILL BE REQUIRED TO KEEP A RECORD OF THE LOCATIONS OF THE BURIED STRUCTURES ACCORDING TO THE STATION AND DISTANCE LEFT OR RIGHT OF THE CENTERLINE OF PAVEMENT. UPON COMPLETION OF THE WORK, THE CONTRACTOR WILL DELIVER THE RECORD TO THE ENGINEER.

BASIS OF PAYMENT: THIS WORK WILL BE PAID FOR AT THE CONTRACT UNIT PRICE PER EACH FOR "FRAMES AND LIDS TO BE ADJUSTED, SPECIAL" NEW FRAMES AND LIDS, WHEN SPECIFIED, WILL BE PAID FOR SEPARATELY.

NOTES:

EXISTING BROKEN FRAMES AND LIDS SHALL BE REMOVED AND DISPOSED OF BY THE CONTRACTOR AND SHALL BE REPLACED AS DIRECTED BY THE ENGINEER. REPLACEMENT FRAMES AND LIDS WILL BE PAID FOR IN ACCORDANCE WITH ARTICLE 109.04 OF THE STANDARD SPECIFICATIONS UNLESS A SEPARATE PAY ITEM HAS BEEN PROVIDED.

IF THE EXISTING LIDS ARE OPEN, THE FRAME WILL BE ADJUSTED TO THE ELEVATION OF THE MILLED PAVEMENT SURFACE PRIOR TO THE MILLING OPERATION. THE FRAME WILL NOT BE REMOVED AND COVERED BY THE METAL PLATE.

CITY OF CHICAGO CASTINGS ARE THE PROPERTY OF THE CITY AND THE CONTRACTOR SHALL NOTIFY THE CITY FOR REMOVAL AND DISPOSITION OF THE CASTINGS.

THE METAL PLATE USED TO COVER THE STRUCTURE SHALL REMAIN THE PROPERTY OF THE CONTRACTOR.

WHEN STRUCTURES ARE TO BE ADJUSTED OR RECONSTRUCTED, THE LOWERING AND RAISING OF THE FRAMES AND LIDS WILL NOT BE PAID FOR SEPARATELY BUT WILL BE INCLUDED IN THE COST OF THE CORRESPONDING PAY ITEM.

DETAILS FOR FRAMES AND LIDS ADJUSTMENT WITH MILLING

ALL DIMENSIONS ARE IN INCHES (MILLIMETERS) UNLESS OTHERWISE SHOWN

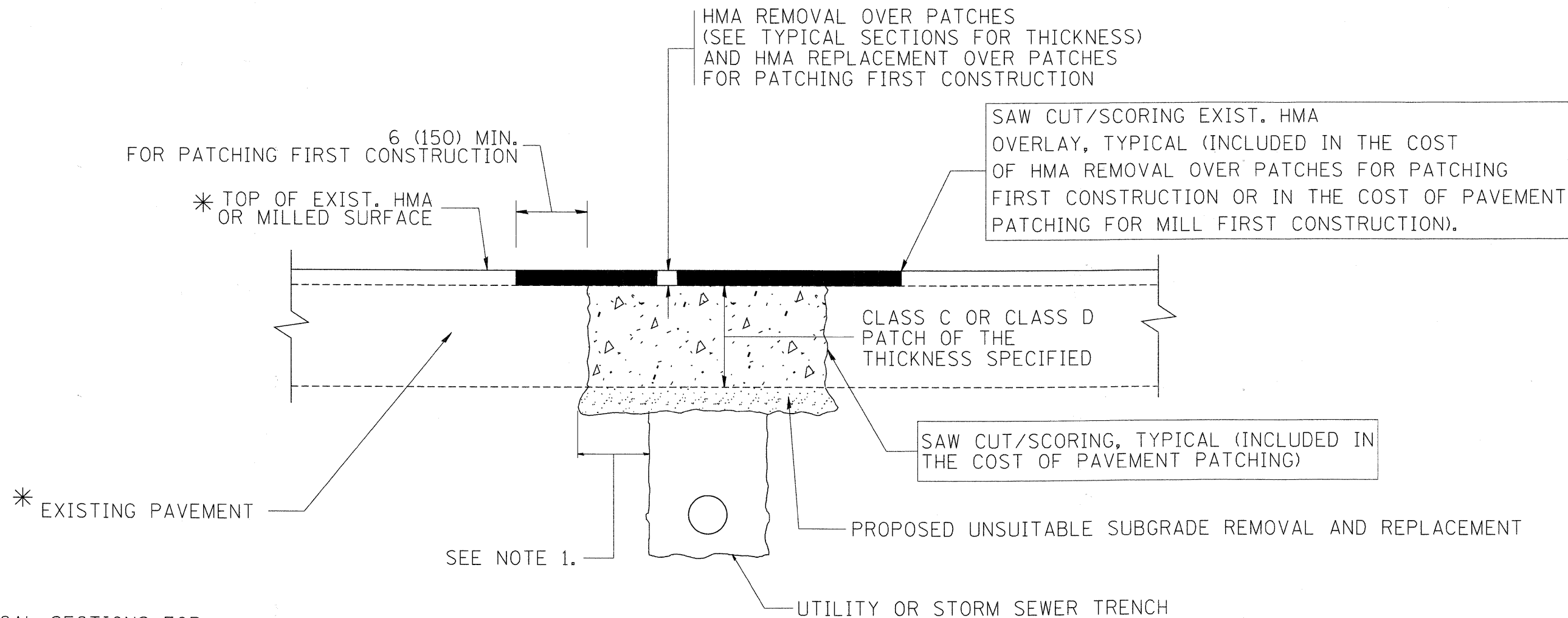
FILE NAME =	USER NAME = lejso	DESIGNED - R. SHAH	REVISED - A. ABBAS 03-21-97
ct:\pw_work\pwwdot\lejso\0108315\bd08.dgn		DRAWN -	REVISED - R. WIEDEMAN 05-14-04
	PLOT SCALE = 49.9999 / / IN.	CHECKED -	REVISED - R. BORO 01-01-07
	PLOT DATE = 3/18/2011	DATE - 10-25-94	REVISED - R. BORO 03-09-11

**STATE OF ILLINOIS
DEPARTMENT OF TRANSPORTATION**

**DETAILS FOR
FRAMES AND LIDS ADJUSTMENT WITH MILLING**

SCALE: NONE SHEET NO. 1 OF 1 SHEETS STA. TO STA.

F.A.U. RTE. 3782	SECTION 10-00093-00-RS	COUNTY COOK	TOTAL SHEETS 17	SHEET NO. 12
BD600-03 (BD-8)			CONTRACT NO.	
FED. ROAD DIST. NO. 1 ILLINOIS FED. AID PROJECT				



* SEE TYPICAL SECTIONS FOR THICKNESS AND MATERIALS

NOTES:

1. THE WIDTH OF THE FULL DEPTH PATCH OVER A TRENCH SHALL BE 12 (300) WIDER ON EACH SIDE OF THE TRENCH.
2. FOR METHOD OF MEASUREMENT AND BASIS OF PAYMENT, SEE RECURRING SPECIAL PROVISION "PATCHING WITH HOT-MIX ASPHALT OVERLAY REMOVAL".

SEQUENCE OF CONSTRUCTION (PATCHING FIRST)

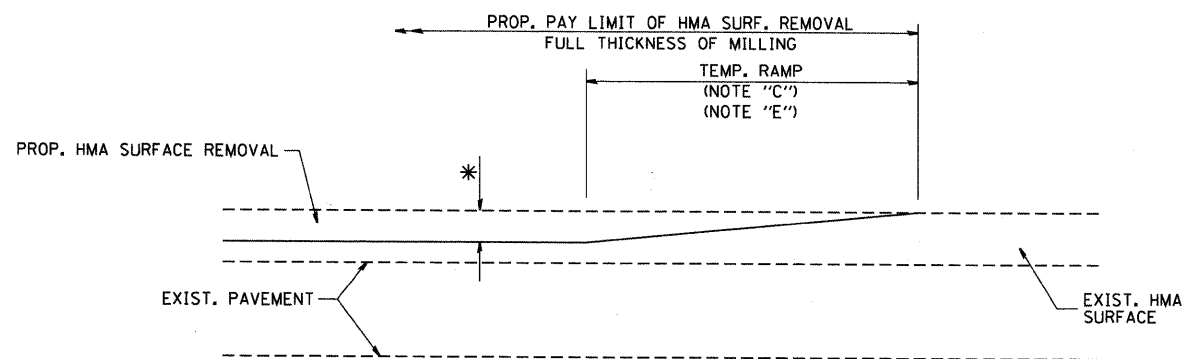
1. REMOVE THE EXISTING HMA MATERIAL OVER THE AREA TO BE PATCHED.
2. REMOVE AND REPLACE WITH CLASS C OR D PATCH.
3. REPLACE HMA MATERIAL OVER THE AREA TO BE PATCHED.

SEQUENCE OF CONSTRUCTION (MILLING FIRST)

1. MILL HMA FIRST IF THERE IS AT LEAST 4 1/2 INCHES OR MORE OF HMA MATERIAL ON TOP OF THE EXISTING PAVEMENT OR IF THE PAVEMENT IS FULL DEPTH HMA. A MINIMUM OF 2 INCHES OF HMA MATERIAL SHALL BE IN PLACE AFTER MILLING.
2. REMOVE AND REPLACE WITH FULL DEPTH CLASS D PATCHES TO TOP OF MILLED SURFACE.

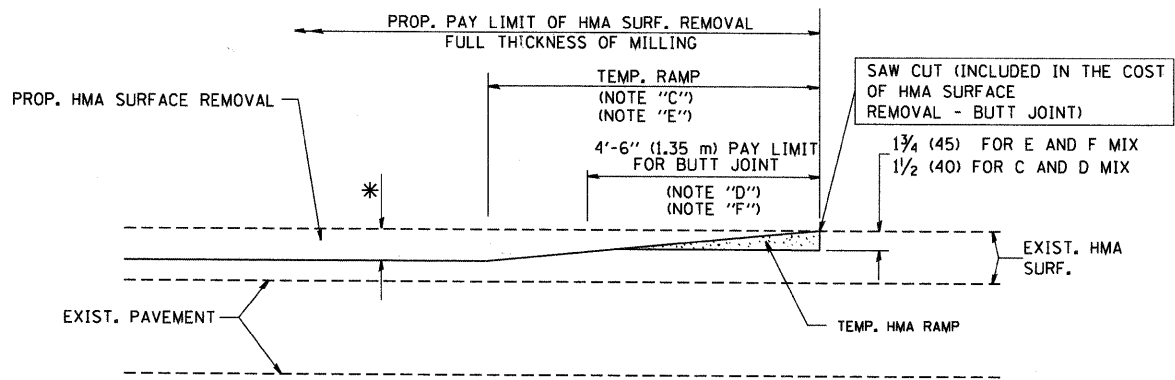
ALL DIMENSIONS ARE IN INCHES (MILLIMETERS) UNLESS OTHERWISE SHOWN.

FILE NAME = c:\projects\distatd22x34\bd22.dgn	USER NAME = bauerdl	DESIGNED - R. SHAH	REVISED - A. ABBAS 04-27-98	STATE OF ILLINOIS DEPARTMENT OF TRANSPORTATION	PAVEMENT PATCHING FOR HMA SURFACED PAVEMENT			F.A.U. RTE.	SECTION	COUNTY	TOTAL SHEETS	SHEET NO.	
		DRAWN -	REVISED - R. BORO 01-01-07					3782	10-00093-00-RS	COOK	17	13	
		PLOT SCALE = 50.000' / IN.	REVISED - R. BORO 09-04-07		SCALE: NONE			SHEET NO. 1 OF 1 SHEETS		STA. TO STA.		BD400-04 (BD-22) CONTRACT NO. 63600	
		PLOT DATE = 10/27/2000	REVISED - K. ENG 10-27-08		FED. ROAD DIST. NO. 1 ILLINOIS FED. AID PROJECT								



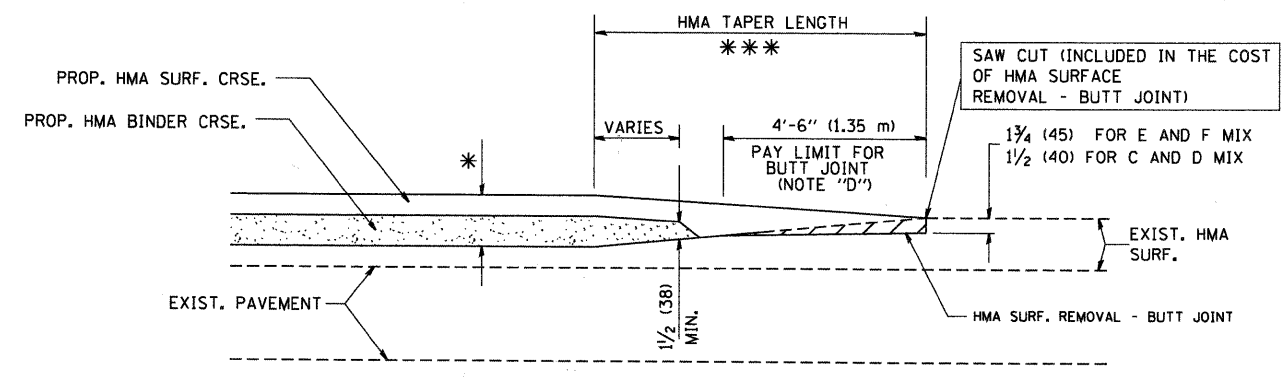
MILLED TEMPORARY RAMP
(FOR BUTT JOINT AND HMA TAPER SEE DETAIL BELOW)

OPTION 1

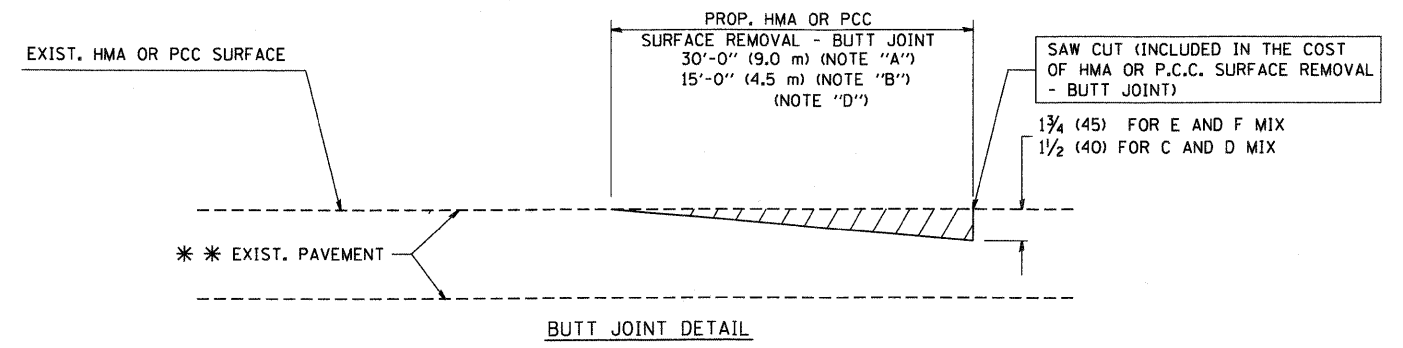


HMA CONSTRUCTED TEMPORARY RAMP
(FOR BUTT JOINT AND HMA TAPER SEE DETAIL BELOW)

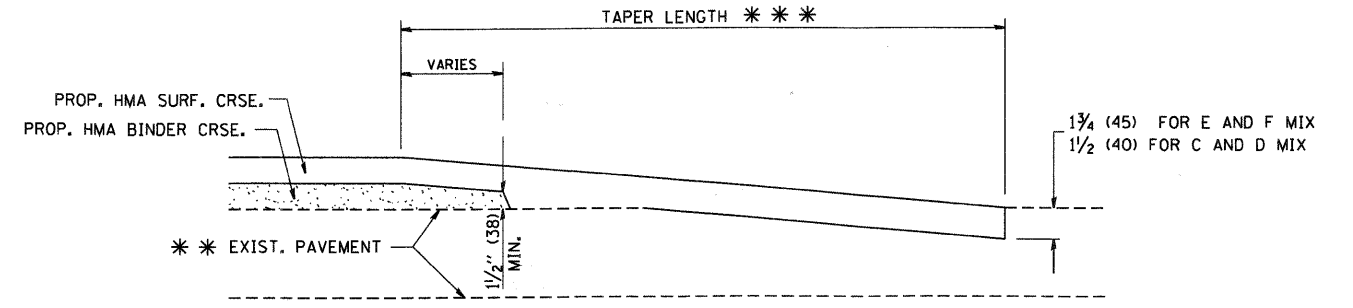
OPTION 2
TYPICAL TEMPORARY RAMP



TYPICAL BUTT JOINT AND HMA TAPER
FOR MILLING AND RESURFACING



BUTT JOINT DETAIL



HMA TAPER DETAIL

TYPICAL BUTT JOINT AND HMA TAPER
FOR RESURFACING ONLY

*** PC CONCRETE, HMA OR HMA RESURFACED PAVEMENT.

NOTES

- A: MAINLINE ROADWAYS AND MAJOR SIDE ROADS.
- B: MINOR SIDE ROADS.
- C: THE TEMP. RAMP SHALL BE CONSTRUCTED IMMEDIATELY UPON REMOVAL OF THE EXISTING HMA SURFACE.
- D: THE BUTT JOINT SHALL BE CONSTRUCTED IMMEDIATELY PRIOR TO PLACING THE PROPOSED HMA COURSES.
- E: TAPER THE TEMP. RAMP AT A RATE OF 3'-0" (900 mm) PER 1 INCH (25 mm) OF MILLING THICKNESS.
- F: INSTALLATION AND REMOVAL OF THE 4'-6" (1.35 m) TEMP. RAMP IS INCLUDED IN COST OF HMA SURFACE REMOVAL - BUTT JOINT
- G: SEE ARTICLE 406.08 AND 406.14 OF THE STANDARD SPECIFICATIONS FOR "HMA AND/OR PCC SURFACE REMOVAL, BUTT JOINT".
- * SEE TYPICAL SECTIONS FOR MILLING THICKNESS.
- *** 20'-0" (6.1 m) PER 1 (25) RESURFACING (NOTE "A")
10'-0" (3.0 m) PER 1 (25) RESURFACING (NOTE "B")

BASIS OF PAYMENT:

THE BUTT JOINT WILL BE PAID FOR AT THE CONTRACT UNIT PRICE PER SQUARE YARD (SQUARE METER) FOR "HOT-MIX ASPHALT SURFACE REMOVAL - BUTT JOINT" OR FOR "PORTLAND CEMENT CONCRETE SURFACE REMOVAL - BUTT JOINT".

ALL DIMENSIONS ARE IN INCHES (MILLIMETERS) UNLESS OTHERWISE SHOWN.

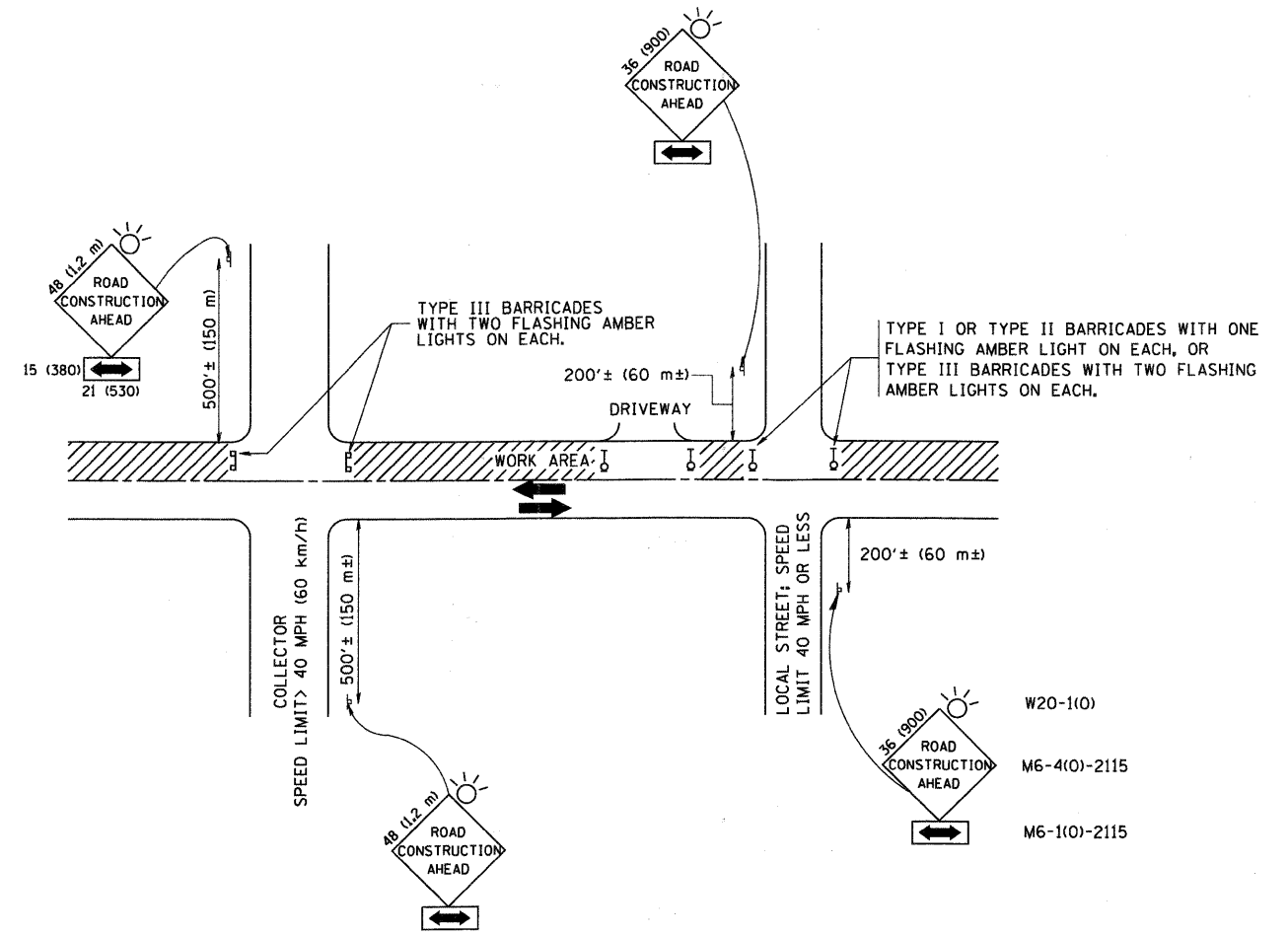
FILE NAME = M:\diststd\22x34\bd32.dgn	USER NAME = gegljanobt	DESIGNED - M. DE YONG	REVISED - R. SHAH 10-25-94
		DRAWN -	REVISED - A. ABBAS 03-21-97
	PLOT SCALE = 50,0000' / IN.	CHECKED -	REVISED - M. GOMEZ 04-06-01
	PLOT DATE = 1/4/2008	DATE - 06-13-90	REVISED - R. BORO 01-01-07

STATE OF ILLINOIS
DEPARTMENT OF TRANSPORTATION

BUTT JOINT AND
HMA TAPER DETAILS

SCALE: NONE SHEET NO. 1 OF 1 SHEETS STA. TO STA.

F.A.U. RTE.	SECTION	COUNTY	TOTAL SHEETS	SHEET NO.
3782	10-00093-00-RS	COOK	17	14
BD400-05 BD32		CONTRACT NO. 63600		
FED. ROAD DIST. NO. 1 ILLINOIS FED. AID PROJECT				



TRAFFIC CONTROL AND PROTECTION FOR SIDE ROADS, INTERSECTIONS, AND DRIVEWAYS

NOTES:

- A. FOR NO LANE RESTRICTION ON THE SIDE ROAD OR DRIVEWAYS
 1. SIDE ROAD WITH A SPEED LIMIT OF 40 MPH (60 km/h) OR LESS AS SHOWN ON THE DRAWING AND AS DIRECTED BY THE ENGINEER:
 - a) ONE ROAD CONSTRUCTION AHEAD SIGN 36 x 36 (900x900) WITH A FLASHER AND FLAG MOUNTED ON IT APPROXIMATELY 200' (60 m) IN ADVANCE OF THE MAIN ROUTE.
 - b) THE CLOSED PORTION OF THE MAIN ROUTE SHALL BE PROTECTED BY BLOCKING WITH TYPE I, TYPE II OR TYPE III BARRICADES, 1/3 OF THE CROSS SECTION OF THE CLOSED PORTION.
 2. SIDE ROAD WITH A SPEED LIMIT GREATER THAN 40 MPH (60 km/h) AS SHOWN ON THE DRAWING AND AS DIRECTED BY THE ENGINEER:
 - a) ONE ROAD CONSTRUCTION AHEAD SIGN 48 x 48 (1.2 m x 1.2 m) WITH A FLASHER MOUNTED ON IT APPROXIMATELY 500' (150 m) IN ADVANCE OF THE MAIN ROUTE.
 - b) THE CLOSED PORTION OF THE MAIN ROUTE SHALL BE PROTECTED BY BLOCKING WITH TYPE III BARRICADES, 1/2 OF THE CROSS SECTION OF THE CLOSED PORTION.
- 3. WHEN THE SIDE ROAD LIES BETWEEN THE BEGINNING OF THE MAINLINE SIGNING AND THE WORK ZONE, A SINGLE HEADED ARROW (M6-1) SHALL BE USED IN LIEU OF THE DOUBLE HEADED ARROW (M6-4).

- B. FOR A LANE CLOSURE ON A SIDE ROAD OR DRIVEWAY:

USE APPLICABLE PORTIONS OF THE TYPICAL APPLICATION OF TRAFFIC CONTROL DEVICES (STD. 701501, STD. 701606 OR THE APPROPRIATE STANDARD). THE SPACING OF SIGNS AND BARRICADES SHALL BE ADJUSTED FOR FIELD CONDITIONS AS DIRECTED BY THE ENGINEER. THE DIRECTIONAL ARROW SHALL BE COVERED OR REMOVED WHEN NO LONGER CONSISTENT WITH THE SIDE ROAD LANE CLOSURE.
- C. ADVANCE WARNING SIGNS ARE TO BE OMITTED ON DRIVEWAY UNLESS OTHERWISE NOTED.
- D. THE TRAFFIC CONTROL AND PROTECTION FOR SIDE ROADS, INTERSECTIONS, AND DRIVEWAYS SHALL BE INCIDENTAL TO THE COST OF SPECIFIED TRAFFIC CONTROL STANDARDS OR ITEMS.

All dimensions are in millimeters (inches) unless otherwise shown.

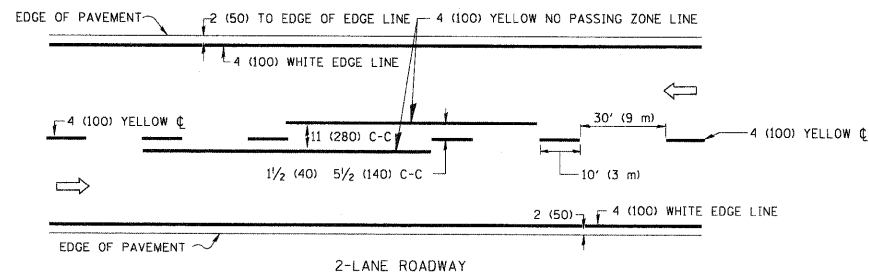
FILE NAME = W:\d:\state\22x34\tcl0.dgn	USER NAME = geglienobt	DESIGNED - LHA	REVISED - J. OBERLE 10-18-95
		DRAWN -	REVISED - A. HOUSEH 03-06-96
	PLOT SCALE = 50,000 1/ IN.	CHECKED -	REVISED - A. HOUSEH 10-15-96
	PLOT DATE = 1/4/2000	DATE - 06-89	REVISED - T. RAMMACHER 01-06-00

STATE OF ILLINOIS
DEPARTMENT OF TRANSPORTATION

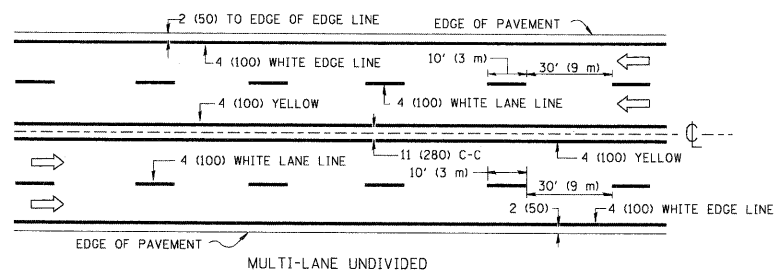
TRAFFIC CONTROL AND PROTECTION FOR
SIDE ROADS, INTERSECTIONS, AND DRIVEWAYS

SCALE: NONE SHEET NO. 1 OF 1 SHEETS STA. TO STA.

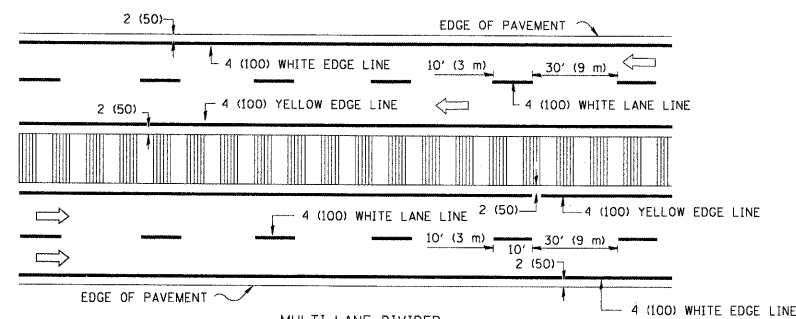
F.A.U. RTE.	SECTION	COUNTY	TOTAL SHEETS	SHEET NO.
3782	10-00093-00-RS	COOK	17	15
TC-10			CONTRACT NO. 63600	
FED. ROAD DIST. NO. 1 ILLINOIS FED. AID PROJECT				



2-LANE ROADWAY



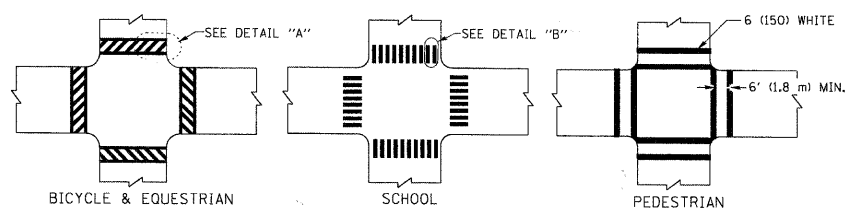
MULTI-LANE UNDIVIDED



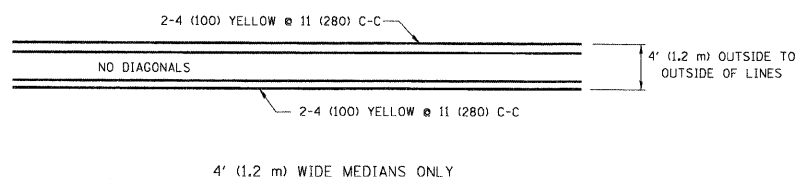
MULTI-LANE DIVIDED WITH MOUNTABLE MEDIAN

NOTE: MEDIANS WITH BARRIER CURB DO NOT REQUIRE AN EDGE LINE

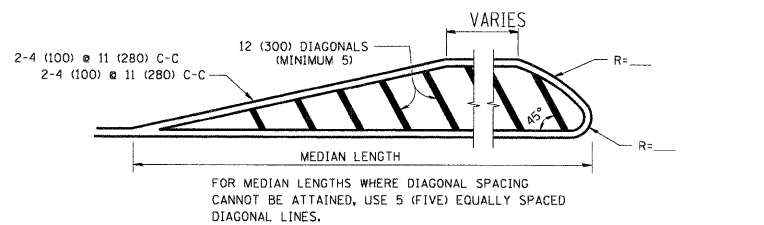
TYPICAL LANE AND EDGE LINE MARKING



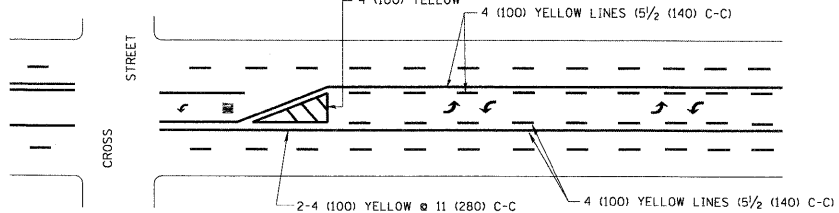
TYPICAL CROSSWALK MARKING



4' (1.2 m) WIDE MEDIANS ONLY



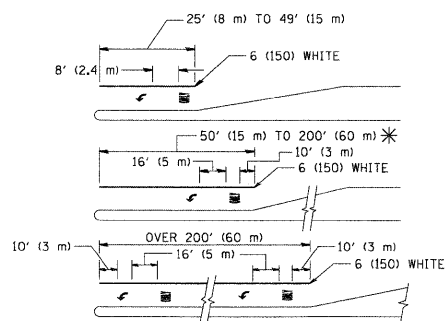
MEDIANS OVER 4' (1.2 m) WIDE



A MINIMUM OF TWO PAIRS OF TURN ARROWS SHALL BE USED, WHITE IN COLOR. ADDITIONAL PAIRS SHALL BE PLACED AT 200' (60 m) TO 300' (90 m) INTERVALS.

MEDIAN WITH TWO-WAY LEFT TURN LANE

TYPICAL PAINTED MEDIAN MARKING

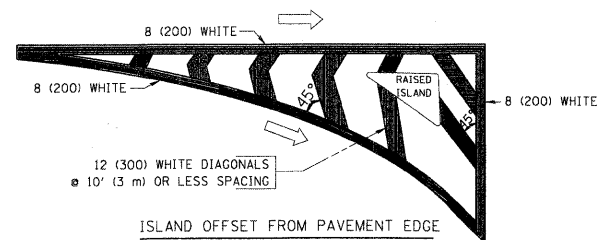


FULL SIZE LETTERS 8' (2.4 m) AND ARROWS SHALL BE USED. AREA = 15.6 SQ. FT. (1.5 m²) ONLY AREA = 20.8 SQ. FT. (1.9 m²)

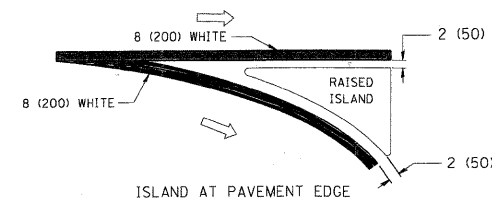
* TURN LANES IN EXCESS OF 400' (120 m) IN LENGTH MAY HAVE AN ADDITIONAL SET OF ARROW - "ONLY" INSTALLED MIDWAY BETWEEN THE OTHER TWO SETS OF ARROW - "ONLY".

TYPICAL LEFT (OR RIGHT) TURN LANE

TYPICAL TURN LANE MARKING



ISLAND OFFSET FROM PAVEMENT EDGE



ISLAND AT PAVEMENT EDGE

TYPICAL ISLAND MARKING

TYPE OF MARKING	WIDTH OF LINE	PATTERN	COLOR	SPACING / REMARKS
CENTERLINE ON 2 LANE PAVEMENT	4 (100)	SKIP-DASH	YELLOW	10' (3 m) LINE WITH 30' (9 m) SPACE
CENTERLINE ON MULTI-LANE UNDIVIDED PAVEMENT	2 @ 4 (100)	SOLID	YELLOW	11 (280) C-C
NO PASSING ZONE LINES: FOR ONE DIRECTION FOR BOTH DIRECTIONS	4 (100) 2 @ 4 (100)	SOLID SOLID	YELLOW YELLOW	5 1/2 (140) C-C FROM SKIP-DASH CENTERLINE 11 (280) C-C OMIT SKIP-DASH CENTERLINE BETWEEN
LANE LINES	4 (100) 5 (125) ON FREEWAYS	SKIP-DASH SKIP-DASH	WHITE WHITE	10' (3 m) LINE WITH 30' (9 m) SPACE
DOTTED LINES (EXTENSIONS OF CENTER, LANE OR TURN LANE MARKINGS)	SAME AS LINE BEING EXTENDED	SKIP-DASH	SAME AS LINE BEING EXTENDED	2' (600) LINE WITH 6' (1.8 m) SPACE
EDGE LINES	4 (100)	SOLID	YELLOW-LEFT WHITE-RIGHT	OUTLINE MOUNTABLE MEDIANS IN YELLOW; EDGE LINES ARE NOT USED NEXT TO BARRIER CURB
TURN LANE MARKINGS	6 (150) LINE; FULL SIZE LETTERS & SYMBOLS 8' (2.4m)	SOLID	WHITE	SEE TYPICAL TURN LANE MARKING DETAIL
TWO WAY LEFT TURN MARKING	2 @ 4 (100) EACH DIRECTION 8' (2.4m) LEFT ARROW	SKIP-DASH AND SOLID IN PAIRS	YELLOW WHITE	10' (3 m) LINE WITH 30' (9 m) SPACE FOR SKIP-DASH; 5 1/2 (140) C-C BETWEEN SOLID LINE AND SKIP-DASH LINE SEE TYPICAL TWO-WAY LEFT TURN MARKING DETAIL
CROSSWALK LINES (PEDESTRIAN) A. DIAGONALS (BIKE & EQUESTRIAN) B. LONGITUDINAL BARS (SCHOOL)	2 @ 6 (150) 12 (300) @ 45° 12 (300) @ 90°	SOLID SOLID SOLID	WHITE WHITE WHITE	NOT LESS THAN 6' (1.8 m) APART 2' (600) APART 2' (600) APART SEE TYPICAL CROSSWALK MARKING DETAILS.
STOP LINES	24 (600)	SOLID	WHITE	PLACE 4' (1.2 m) IN ADVANCE OF AND PARALLEL TO CROSSWALK, IF PRESENT. OTHERWISE, PLACE AT DESIRED STOPPING POINT, PARALLEL TO CROSSROAD CENTERLINE, WHERE POSSIBLE
PAINTED MEDIANS	2 @ 4 (100) WITH 12 (300) DIAGONALS @ 45° NO DIAGONALS USED FOR 4' (1.2 m) WIDE MEDIANS	SOLID	YELLOW; TWO WAY TRAFFIC WHITE; ONE WAY TRAFFIC	11 (280) C-C FOR THE DOUBLE LINE SEE TYPICAL PAINTED MEDIAN MARKING.
GORE MARKING AND CHANNELIZING LINES	8 (200) WITH 12 (300) DIAGONALS @ 45°	SOLID	WHITE	DIAGONALS: 15' (4.5 m) C-C (LESS THAN 30MPH (50 km/h)) 20' (6 m) C-C 30MPH (50 km/h) TO 45MPH (70 km/h) 30' (9 m) C-C (OVER 45MPH (70 km/h))
RAILROAD CROSSING	24 (600) TRANSVERSE LINES; "RR" IS 6' (1.8 m) LETTERS; 16 (400) LINE FOR "X"	SOLID	WHITE	SEE STATE STANDARD 780001 AREA OF: "R"=3.6 SQ. FT. (0.33 m ²) EACH "X"=54.0 SQ. FT. (5.0 m ²)
SHOULDER DIAGONALS	12 (300) @ 45°	SOLID	WHITE - RIGHT YELLOW - LEFT	50' (15 m) C-C (LESS THAN 30MPH (50 km/h)) 75' (25 m) C-C (30 MPH (50 km/h) TO 45MPH (70 km/h)) 150' (45 m) C-C (OVER 45MPH (70 km/h))

FOR FURTHER DETAILS ON PAVEMENT MARKING REFER TO STANDARD SPECIFICATIONS FOR ROAD AND BRIDGE CONSTRUCTION AND STATE STANDARD 780001.

All dimensions are in inches (millimeters) unless otherwise shown.

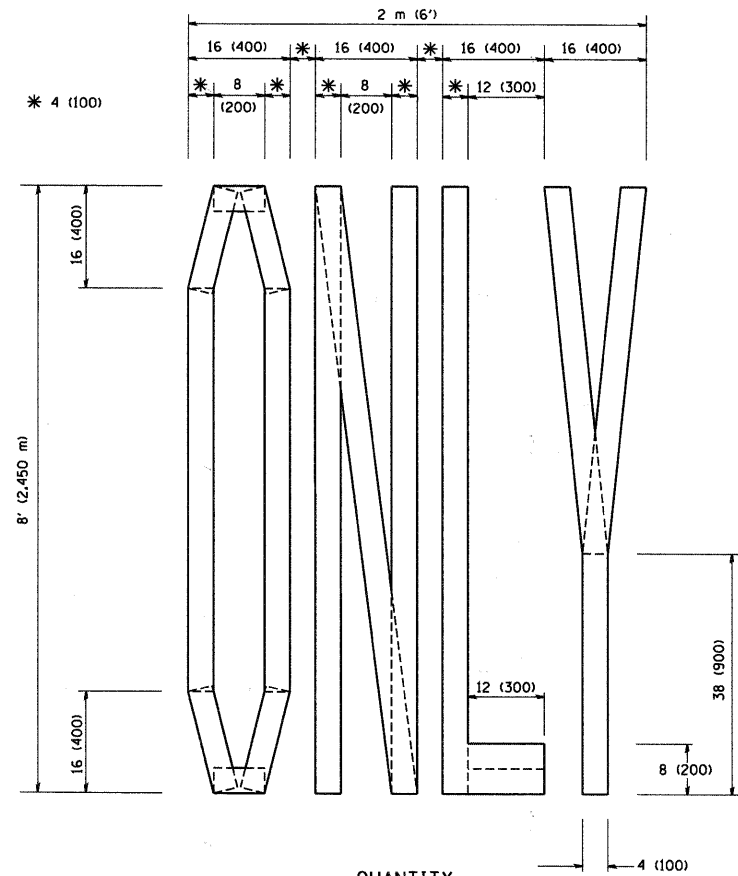
FILE NAME =	USER NAME = drvakosgn	DESIGNED = EVERS	REVISED - T. RAMMACHER 10-27-94
ca:\pw_work\p1\dot\drvakosgn\d0108315\to3.dgn		DRAWN =	REVISED - C. JUCIUS 09-09-09
	PLOT SCALE = 50.000 / IN.	CHECKED =	REVISED =
	PLOT DATE = 9/9/2009	DATE = 03-19-90	REVISED =

STATE OF ILLINOIS
DEPARTMENT OF TRANSPORTATION

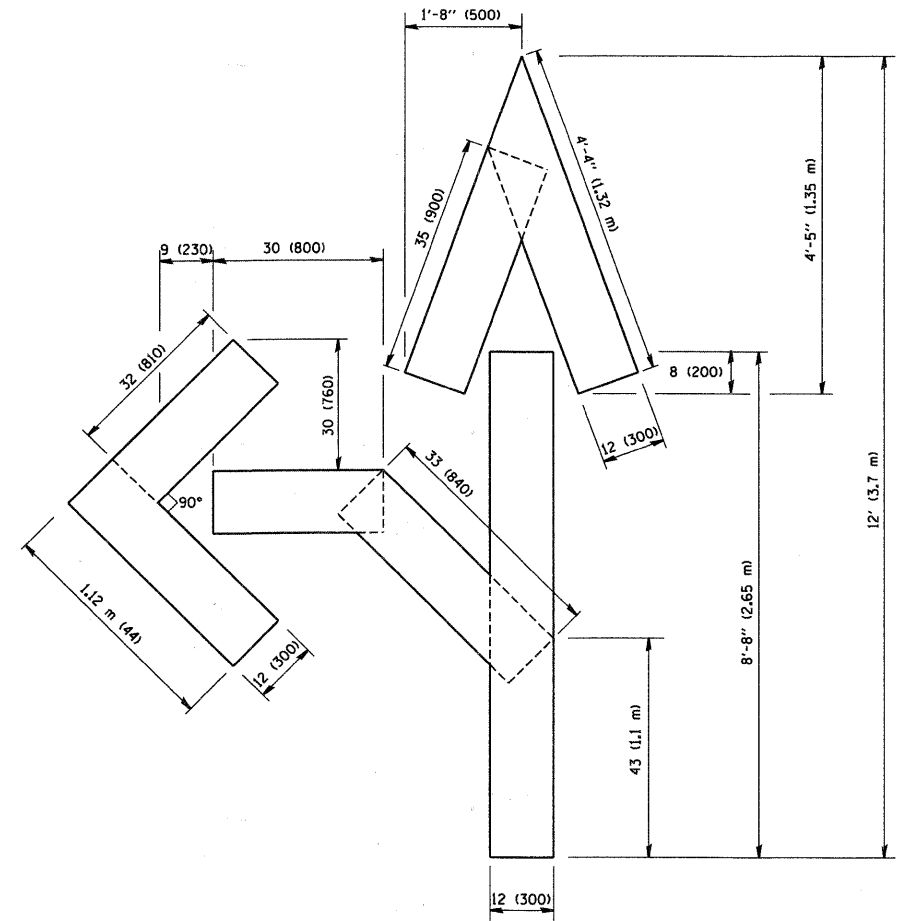
DISTRICT ONE
TYPICAL PAVEMENT MARKINGS

F.A.U. RTE.	SECTION	COUNTY	TOTAL SHEETS	SHEET NO.
3782	10-00093-00-RS	COOK	17	16
TC-13		CONTRACT NO. 63600		
FED. ROAD DIST. NO. 1 (ILLINOIS) FED. AID PROJECT				

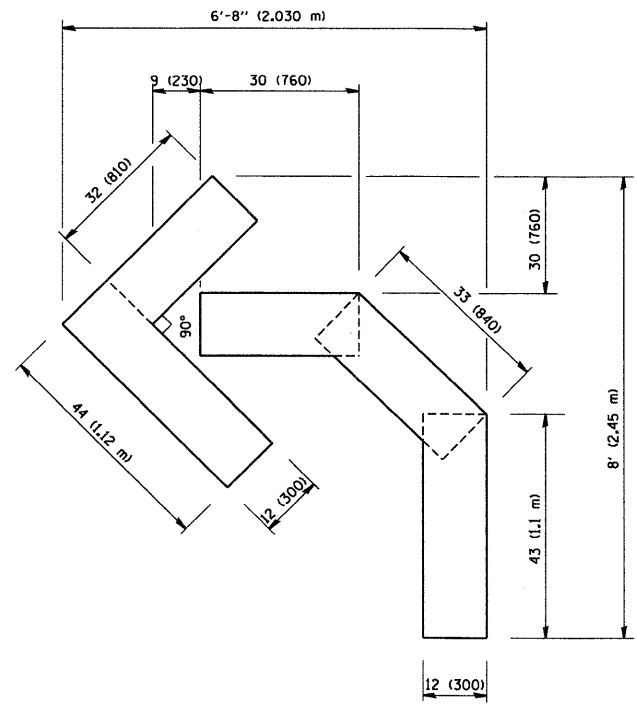
SCALE: NONE SHEET NO. 1 OF 1 SHEETS STA. TO STA.



QUANTITY
 4 (100) LINE = 64.1 ft. (19.7 m)
 21.1 sq. ft. (1.97 sq. m)



QUANTITY
 4 (100) LINE = 82.5 ft. (25.3 m)
 27.5 sq. ft. (2.53 sq. m)



QUANTITY
 4 (100) LINE = 45.5 ft. (13.9 m)
 15.2 sq. ft. (1.39 sq. m)

All dimensions are in inches (millimeters) unless otherwise shown.

FILE NAME = W:\diststd\22x34\col6.dgn	USER NAME = geglienobt	DESIGNED -	REVISED -T. RAMMACHER 06-05-96	STATE OF ILLINOIS DEPARTMENT OF TRANSPORTATION	PAVEMENT MARKING LETTERS AND SYMBOLS FOR TRAFFIC STAGING			F.A.U. RTE.	SECTION	COUNTY	TOTAL SHEETS	SHEET NO.	
		DRAWN -	REVISED -T. RAMMACHER 11-04-97		SCALE: NONE	SHEET NO. 1 OF 1 SHEETS	STA.	TO STA.	3782	10-00093-00-RS	COOK	17	17
		PLOT SCALE = 50.0000' / IN.	REVISED -T. RAMMACHER 03-02-98							TC-16			
		PLOT DATE = 1/4/2008	REVISED -E. GOMEZ 08-28-00							FED. ROAD DIST. NO. 1	ILLINOIS	FED. AID PROJECT	CONTRACT NO. 63600