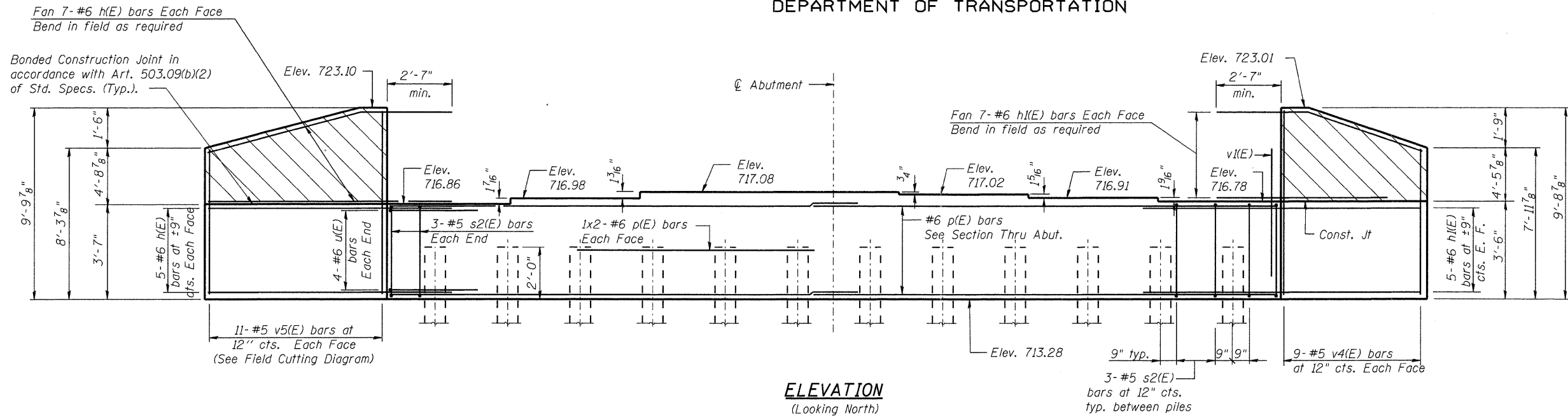
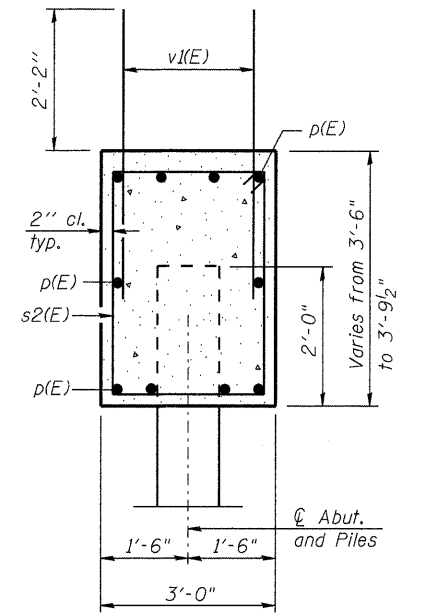


STATE OF ILLINOIS  
DEPARTMENT OF TRANSPORTATION



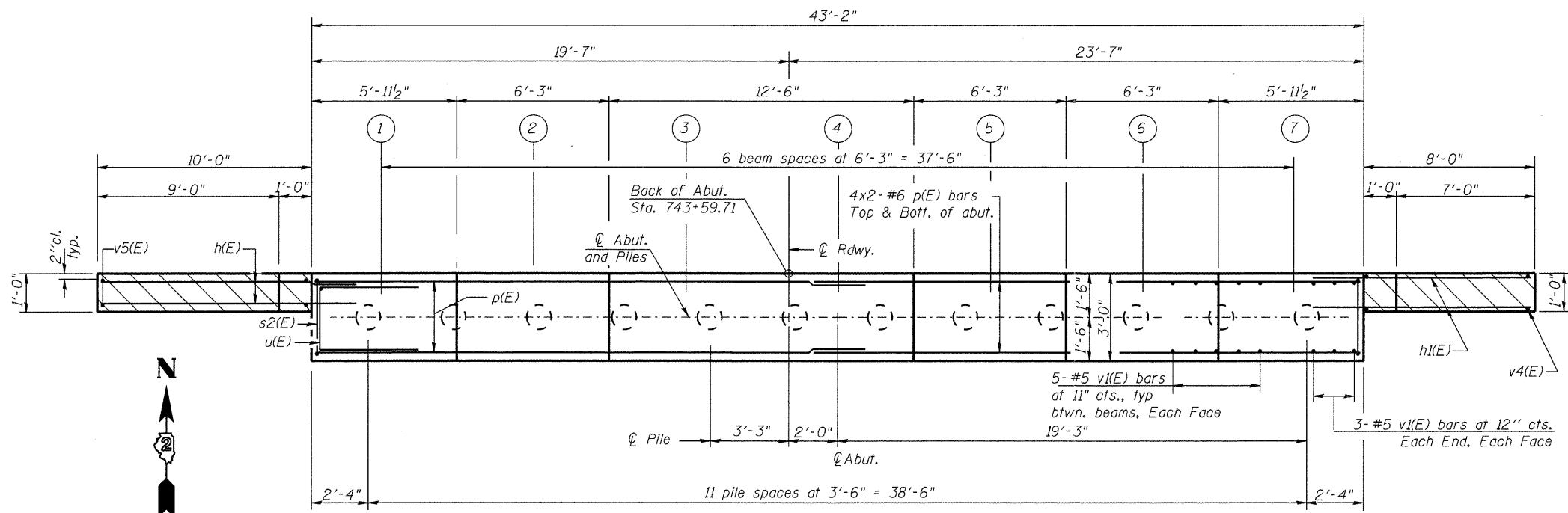
**ELEVATION**  
(Looking North)



**SEC. THRU ABUT.**

**PILE DATA**

Type and Size: 12"  $\phi$  Metal Shell w/1/4" walls  
Nominal Required Bearing: 330 kips  
Allowable Resistance Available: 110 kips  
Est. Pile Length: 46'  
Number of Production: 11  
Number of Test Piles: 1  
The metal shell piles shall be according to ASTM A252, Grade 3.



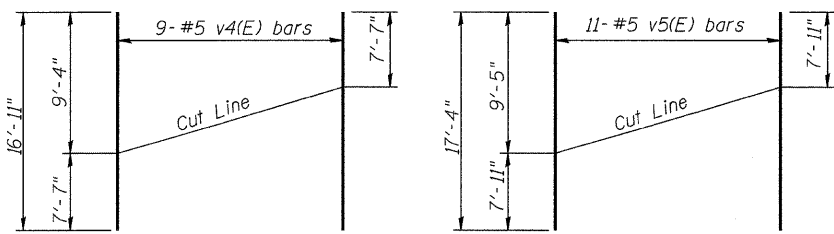
**PLAN**



**BILL OF MATERIAL**

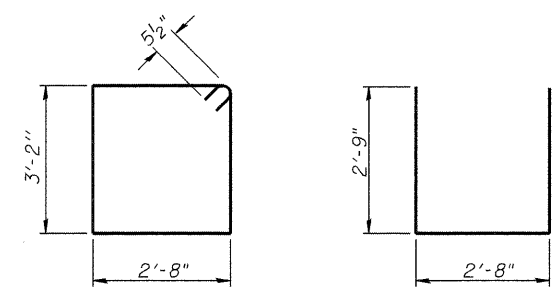
Bar	No.	Size	Length	Shape
h(E)	24	#6	13'-1"	—
h(E)	24	#6	11'-1"	—
p(E)	20	#6	22'-6"	—
s2(E)	39	#5	12'-7"	□
u(E)	8	#6	8'-2"	U
v1(E)	72	#5	4'-4"	—
v4(E)	9	#5	16'-11"	—
v5(E)	11	#5	17'-4"	—
Concrete Structures		Cu. Yd.	20.0	
Reinforcement Bars, Epoxy Coated		Pound	2850	
Test Pile Metal Shell		Each	1	
Furnishing Metal Shell Piles, 12" x 0.250"		Foot	506	
Driving Piles		Foot	506	
Structure Excavation		Cu. Yd.	158	

- Notes:
- 1) Pour steps monolithically with cap.
  - 2) Reinforcement bars designated (E) shall be epoxy coated.
  - 3) All edges shall have 3/4" chamfers except as noted.
  - 4) Hatched area to be poured with deck after beams are in place. Quantity of concrete for hatched area included with "Concrete Superstructure" on Sheet 15.
  - 5) The test pile shall be driven to 110 percent of the Nominal Required Bearing indicated in the pile data information.



**FIELD CUTTING DIAGRAM**

Order v4(E) & v5(E) full length. Cut as shown and use remainder of bars in opposite face.



**BAR s2(E)**

**BAR u(E)**

Revised 6/1/2011, JAN

DESIGNED - JAN
CHECKED - BTO
DRAWN - BTO
CHECKED - JAN

SHEET NO. 22 30 SHEETS	F.A.P. RTE. 734	SECTION 77-2B-1, 77-2-2	COUNTY WINNEBAGO	TOTAL SHEETS 530	SHEET NO. 294
	CONTRACT NO. 64813				
FED. ROAD DIST. NO.		ILLINOIS	FED. AID PROJECT		

**NORTH ABUTMENT NORTHBOUND  
STRUCTURE NO. 101-0178**