

STATE OF ILLINOIS  
DEPARTMENT OF TRANSPORTATION  
DIVISION OF HIGHWAYS

**PROPOSED  
HIGHWAY PLANS**

FAP ROUTE 742 (IL 2)  
SECTION (32, 33)RS-3

**MILLING & RESURFACING  
WINNEBAGO COUNTY**

C-92-119-11

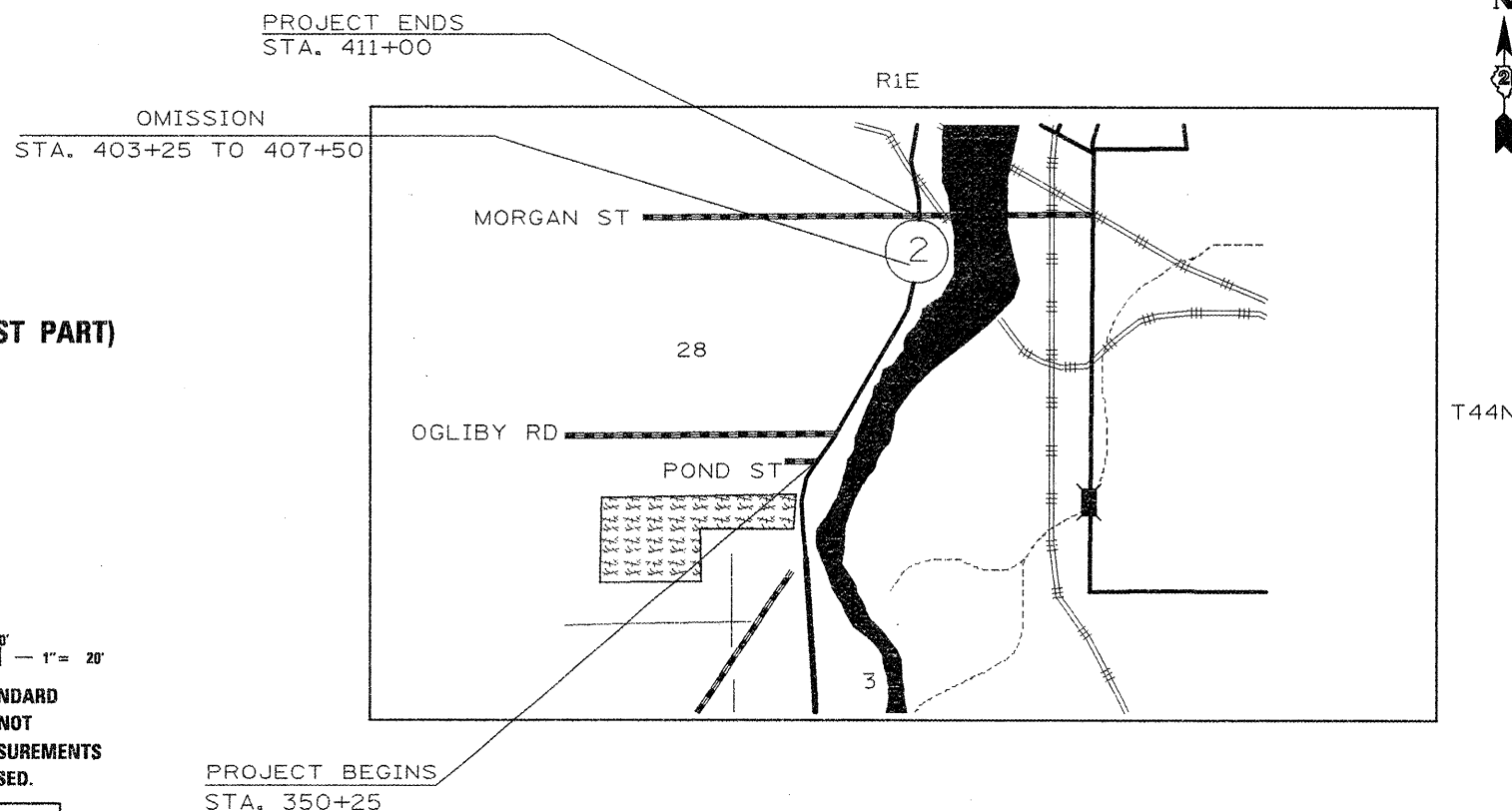
F.A.P. R.T.E.	SECTION	COUNTY	TOTAL SHEETS	SHEET NO.
742	(32, 33) RS-3	WINNEBAGO	17	1
		ILLINOIS	CONTRACT NO. 64H13	

**INDEX OF SHEETS**

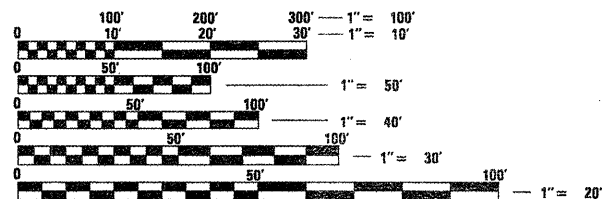
- 1 COVER SHEET
- 1 INDEX OF SHEETS & STANDARDS
- 2 GENERAL NOTES
- 3 SUMMARY OF QUANTITIES
- 4-5 TYPICAL SECTIONS
- 6-8 SCHEDULE OF QUANTITIES
- 9-13 PLAN SHEETS
- 14 PAVEMENT PATCHING FOR HOT-MIX ASPHALT SURFACED PAVEMENT (DIST STD 32.4)
- 15-17 TYPICAL PAVEMENT MARKING (DIST STD 41.1)

**STATE STANDARDS**

- 442201-03 CLASS C & D PATCHES
- 701101-02 OFF-ROAD OPERATIONS, MULTILANE, 15' TO 24" FROM PAVEMENT EDGE
- 701427 LANE CLOSURE, MULTILANE, INTERMITTENT OR MOVING OPERATIONS FOR SPEEDS < OR = 40 MPH
- 701606-07 URBAN LANE CLOSURE, MULTILANE, WITH MOUNTABLE MEDIAN
- 701701-07 URBAN LANE CLOSURE, MULTILANE, INTERSECTION
- 701901-01 TRAFFIC CONTROL DEVICES
- 720001-01 SIGN PANEL MOUNTING DETAILS
- 720006-02 SIGN PANEL ERECTION DETAILS
- 720011-01 METAL POST FOR SIGNS, MARKERS, & DELINEATORS
- 728001-01 TELESCOPING STEEL SIGN SUPPORTS
- 729001-01 APPLICATIONS OF TYPES A & B METAL POSTS (FOR SIGNS & MARKERS)
- 731001-01 BASE FOR TELESCOPING STEEL SIGN SUPPORT
- 780001-02 TYPICAL PAVEMENT MARKINGS



**SECTION 27, 34**  
**TOWNSHIP: ROCKFORD (NORTH WEST PART)**



FULL SIZE PLANS HAVE BEEN PREPARED USING STANDARD ENGINEERING SCALES. REDUCED SIZED PLANS WILL NOT CONFORM TO STANDARD SCALES. IN MAKING MEASUREMENTS ON REDUCED PLANS, THE ABOVE SCALES MAY BE USED.

J.U.L.I.E.  
JOINT UTILITY LOCATION INFORMATION FOR EXCAVATION  
1-800-892-0123  
OR 811

PROJECT ENGINEER—MASOOD AHMAD 815-284-5510  
PROJECT MANAGER—TRACI HELFRICH 815-284-5932  
EMAIL—traci.helfrich@illinois.gov  
CONTRACT NO. 64H13

GROSS LENGTH = 6075 FT. = 1.15 MILE  
NET LENGTH = 5650 FT. = 1.07 MILE

STATE OF ILLINOIS  
DEPARTMENT OF TRANSPORTATION  
DIVISION OF HIGHWAYS

SUBMITTED March 18 2016  
Eric S. Thibodeaux  
DEPUTY DIRECTOR OF HIGHWAYS, REGION ENGINEER

May 13 2011  
Scott E. Stitt, P.E.  
acting ENGINEER OF DESIGN AND ENVIRONMENT

May 13 2011  
Christine M. Reed  
DIRECTOR OF HIGHWAYS, CHIEF ENGINEER

**PRINTED BY THE AUTHORITY  
OF THE STATE OF ILLINOIS**