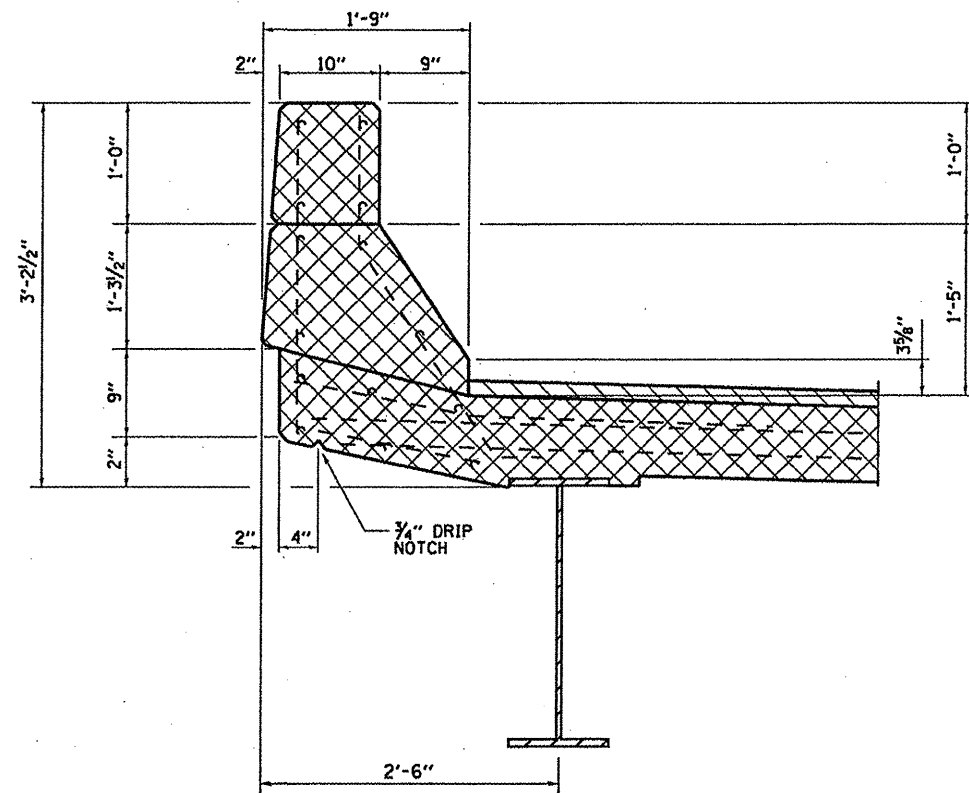
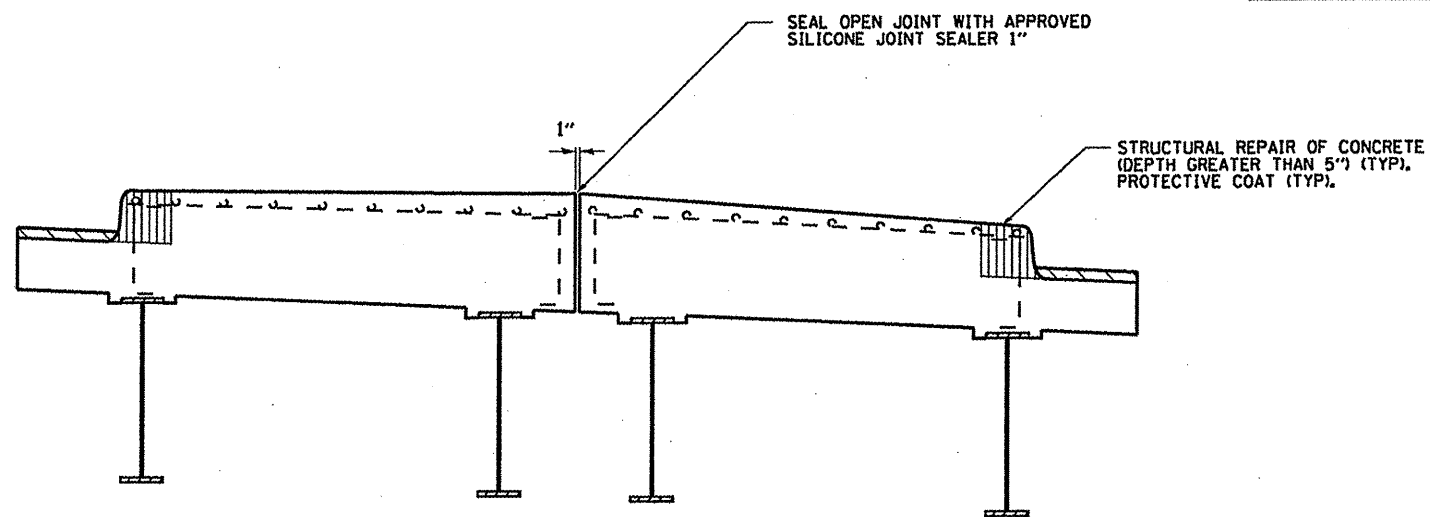
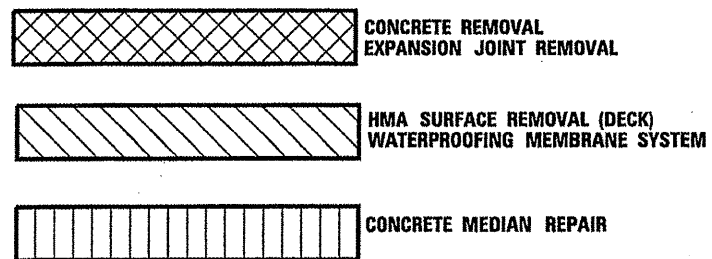


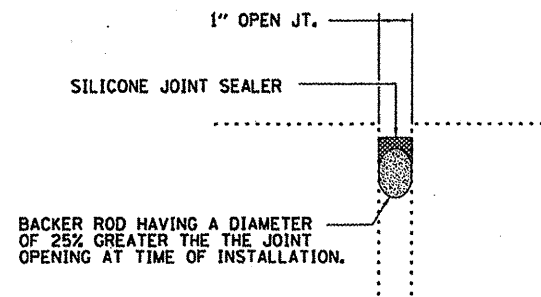
SECTION A-A
AT EXPANSION JOINT



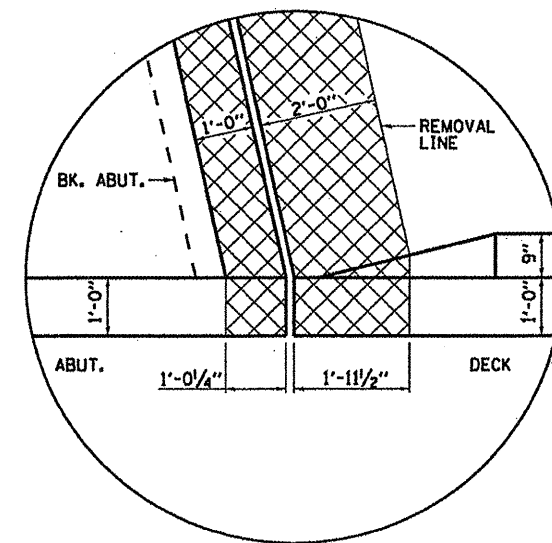
CURB SECTION
AT EXPANSION JOINT



MEDIAN SECTION
AT EXPANSION JOINT



JOINT SEALER DETAIL



CORNER DETAIL

SUPERSTRUCTURE DETAILS
IL RTE. 23 OVER OTTER CREEK
FAP 68 (IL 23) SEC. (6B-1)I
LASALLE COUNTY
STA. 142+08
S.N. 050-0160

FILE NAME =	USER NAME = petelyj	DESIGNED - RLW	REVISED -
o:\pwork\paidot\petelyj\0257398\0368	37-details.dgn	DRAWN - RLW	REVISED -
	PLOT SCALE = 100,0000 / 1 in.	CHECKED -	REVISED -
	PLOT DATE = 5/19/2011	DATE -	REVISED -

STATE OF ILLINOIS
DEPARTMENT OF TRANSPORTATION

SUPERSTRUCTURE DETAILS

SCALE: SHEET NO. 3 OF 12 SHEETS STA. TO STA.

F.A.P. RTE.	SECTION	COUNTY	TOTAL SHEETS	SHEET NO.
68	(6B-1)I	LASALLE	20	11
CONTRACT NO. 66937				
ILLINOIS FED. AID PROJECT				