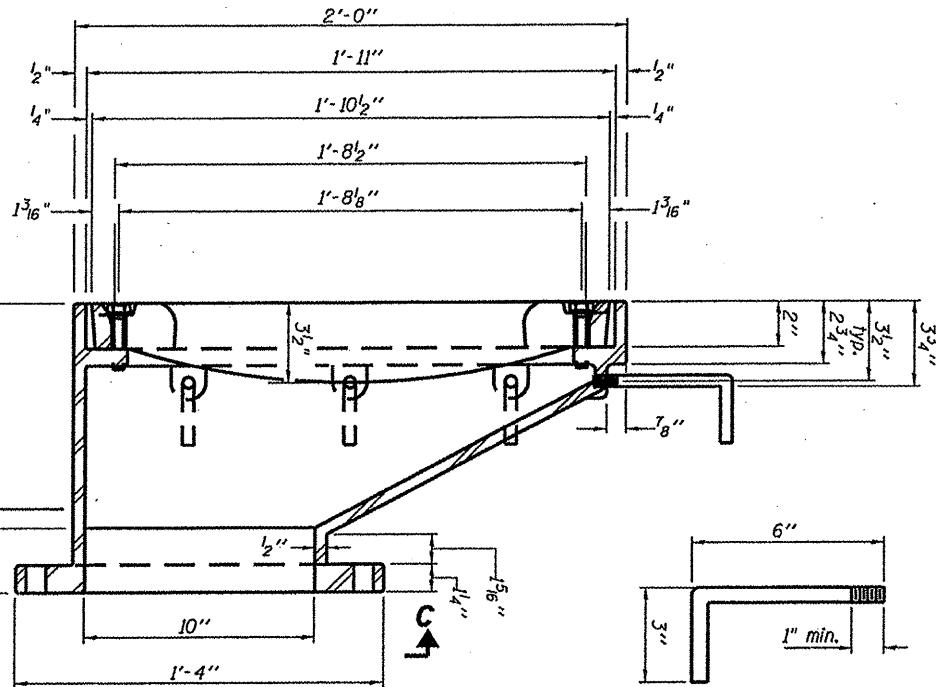


PLAN

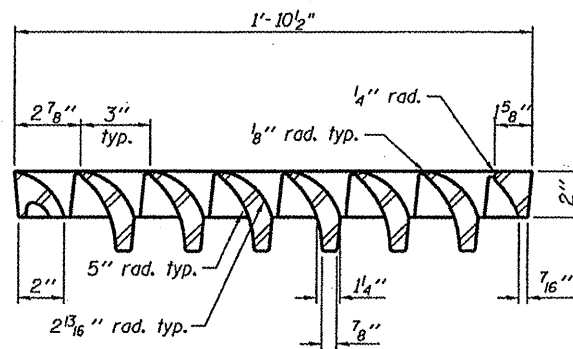
DRILL AND TAP SCUPPER FRAME FOR 1/2"-13 UNC THREADED ANCHOR STUDS. (TYP) - 9 LOCATIONS

Drill and tap scupper frame for 1/2"-13 UNC stainless steel bolts with lock washers 4 locations

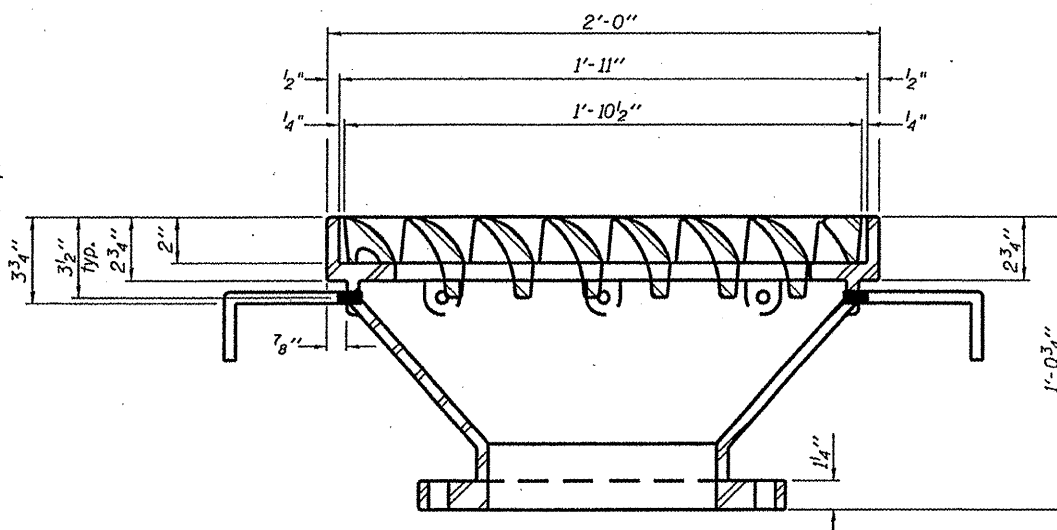


SECTION A-A

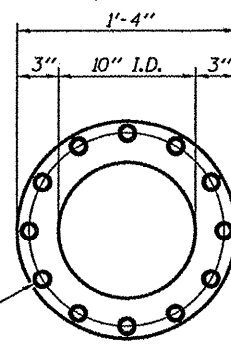
ANCHOR STUD DETAIL



VANE GRATE DETAIL

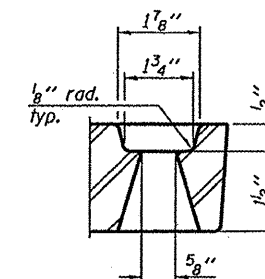


SECTION B-B

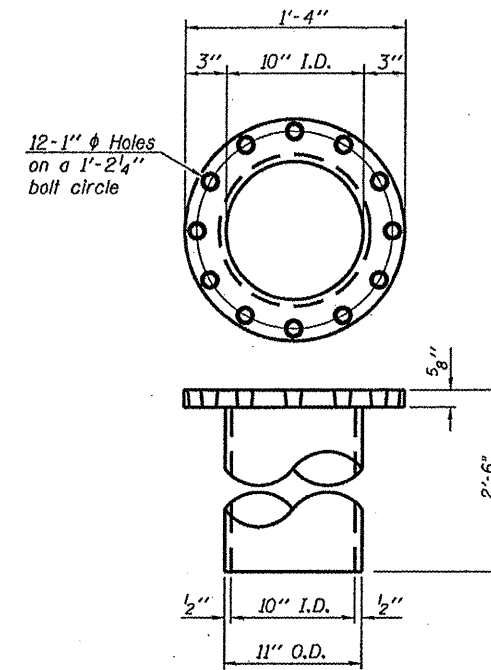


VIEW C-C

Drill and tap 12 holes for 1/8"-9 UNC bolts on 1'-2 1/4" bolt circle



GRATE BOLT HOLE DETAIL



DOWNSPOUT

Notes:

- All cast iron parts shall be gray iron conforming to the requirements of AASHTO M 105, Class 35B.
- Bolts, anchor studs, washers and nuts shall conform to the requirements of ASTM A 307 and shall be galvanized according to AASHTO M 232.
- All castings shall conform to the requirements of AASHTO M 306.
- Downspouts located on the exterior side of a painted steel fascia beam shall be painted with the finish coat specified for the exterior side of the fascia beam.
- As an alternate, bolts, anchor studs, washers and nuts may be stainless steel according to Article 1006.29(d) of the Standard Specifications.
- Structural steel weldments of equal sections and of the same configuration may be substituted for the cast iron scupper frame. Fillet or full penetration welds shall be used for the weldments. Details shall be submitted to the Engineer for approval. Structural steel weldments shall not be substituted for the cast iron scupper grate. Structural steel frames and downspouts shall be galvanized according to AASHTO M 111.
- The Contractor shall take appropriate measures to assure that Protective Coat is not applied to the scupper.
- Cost of the Grate, Frame, Downspout, Anchor Studs, Bolts, Washers and Nuts including complete installation of the scupper shall be paid for at the contract unit price each for Drainage Scupper, DS-12M10.
- Alternate fiberglass downspout conforming to ASTM D 2996 with a short-time rupture strength hoop tensile stress of 30,000 psi min. may be used in lieu of the cast iron or steel equivalent.

BILL OF MATERIAL

ITEM	UNIT	QUANTITY
Drainage Scupper, DS-12M10	Each	2

DRAINAGE SCUPPER, DS-12M10
 IL RTE. 23 OVER OTTER CREEK
 FAP 68 (IL 23) SEC. (6B-1)I
 LASALLE COUNTY
 STA. 142+08
 S.N. 050-0160

FILE NAME =	USER NAME = patelyj	DESIGNED - RLW	REVISED -
or\pwork\pwork\patelyj\d0257398\0366	37-detail.dgn	DRAWN - RLW	REVISED -
	PLOT SCALE = 100.0000 X 1 in.	CHECKED -	REVISED -
	PLOT DATE = 5/19/2011	DATE -	REVISED -

STATE OF ILLINOIS
DEPARTMENT OF TRANSPORTATION

DRAINAGE SCUPPER, DS-12M10

SCALE: SHEET NO. 11 OF 12 SHEETS STA. TO STA.

F.A.P. RTE.	SECTION	COUNTY	TOTAL SHEETS	SHEET NO.
68	(6B-1)I	LASALLE	20	19
				CONTRACT NO. 66937
ILLINOIS FED. AID PROJECT				