

F.A.P. RTE.	SECTION	COUNTY	TOTAL SHEETS	SHEET NO.
697	(17)T	ILLINOIS	7	1
CONTRACT NO. 66B14				

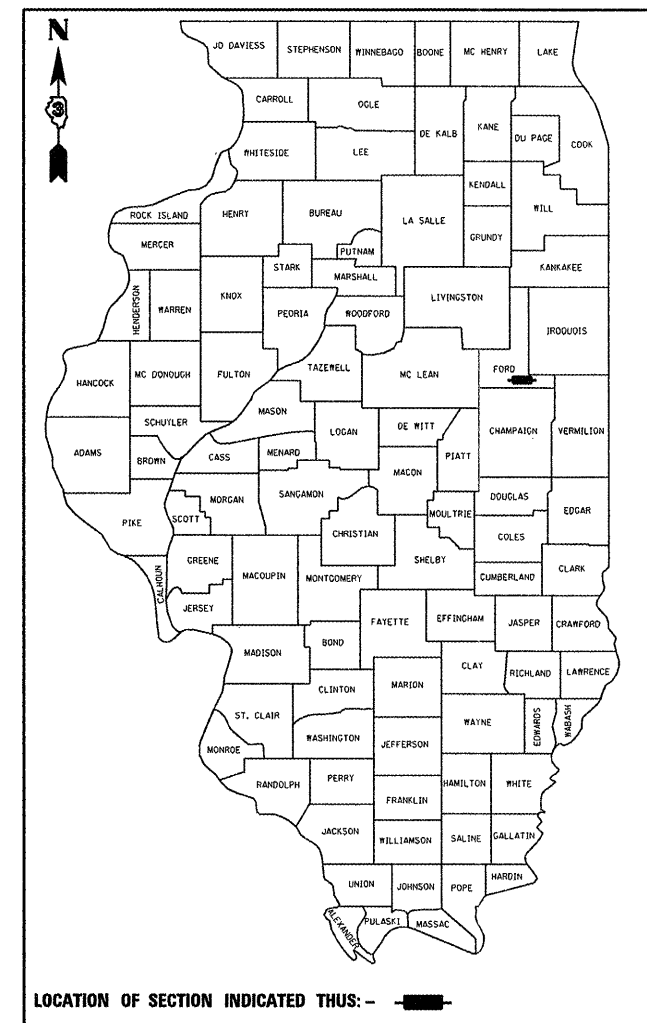
**STATE OF ILLINOIS  
DEPARTMENT OF TRANSPORTATION  
DIVISION OF HIGHWAYS**

**PROPOSED  
HIGHWAY PLANS**

**FAP ROUTE 697 (IL 9)  
SECTION (17)T**

**CULVERT REMOVAL AND REPLACEMENT  
FORD COUNTY  
C-93-078-11**

D-93-062-11



LOCATION OF SECTION INDICATED THUS: —■—

**MAJOR COLLECTOR**  
FAP RTE. 697 (IL 9)

2010	
ADT	2350
P.V.	89.3%
S.U.	4.3%
M.U.	6.4%

STATE OF ILLINOIS  
DEPARTMENT OF TRANSPORTATION  
DIVISION OF HIGHWAYS

SUBMITTED 4/7 20 11  
Eric S. Therkelsen  
DEPUTY DIRECTOR OF HIGHWAYS, REGION ENGINEER

May 13 20 11  
Scott E. Stitt, P.E.  
acting ENGINEER OF DESIGN AND ENVIRONMENT

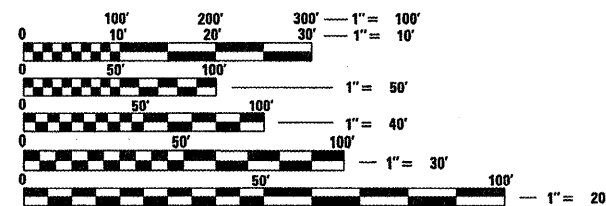
May 13 20 11  
Christine M. Reed  
DIRECTOR OF HIGHWAYS, CHIEF ENGINEER

**PRINTED BY THE AUTHORITY  
OF THE STATE OF ILLINOIS**

- STANDARDS**
- COVER SHEET
  - GENERAL NOTES
  - SUMMARY OF QUANTITIES
  - TYPICAL SECTION
  - EXISTING PLAN DETAILS
  - PROPOSED PLAN DETAILS
  - FIELD TILE TREATMENT DETAILS

- STANDARDS**
- |           |  |
|-----------|--|
| 000001-06 | STANDARD SYMBOLS, ABBREVIATIONS AND PATTERNS                                       |
| 001006    | DECIMAL OF AN INCH AND OF A FOOT   |
| 542301-03 | PRECAST REINFORCED CONCRETE FLARED END SECTION                                     |
| 542311-02 | GRATING FOR CONCRETE FLARED END SECTION (FOR 24" (600 mm) THRU 54" (1350 mm) PIPE) |
| 701001-02 | OFF-ROAD OPERATIONS 2L, 2W, MORE THAN 15' (4.5 m) AWAY                             |
| 701006-03 | OFF-ROAD OPERATIONS 2L, 2W, 15' (4.5 m) TO 24" (600 mm) FROM PAVEMENT EDGE         |
| 701201-04 | LANE CLOSURE, 2L, 2W, DAY ONLY, FOR SPEEDS ≥ 45 MPH                                |
| 701301-04 | LANE CLOSURE, 2L, 2W, SHORT TIME OPERATIONS  |
| 701311-03 | LANE CLOSURE, 2L, 2W, MOVING OPERATIONS - DAY ONLY                                 |
| 701901-01 | TRAFFIC CONTROL DEVICES  |

**PROJECT LOCATION**  
DUAL CROSS ROAD CULVERTS  
AT STA. 190+10  
+/-256' FT. EAST OF IL ROUTE 115

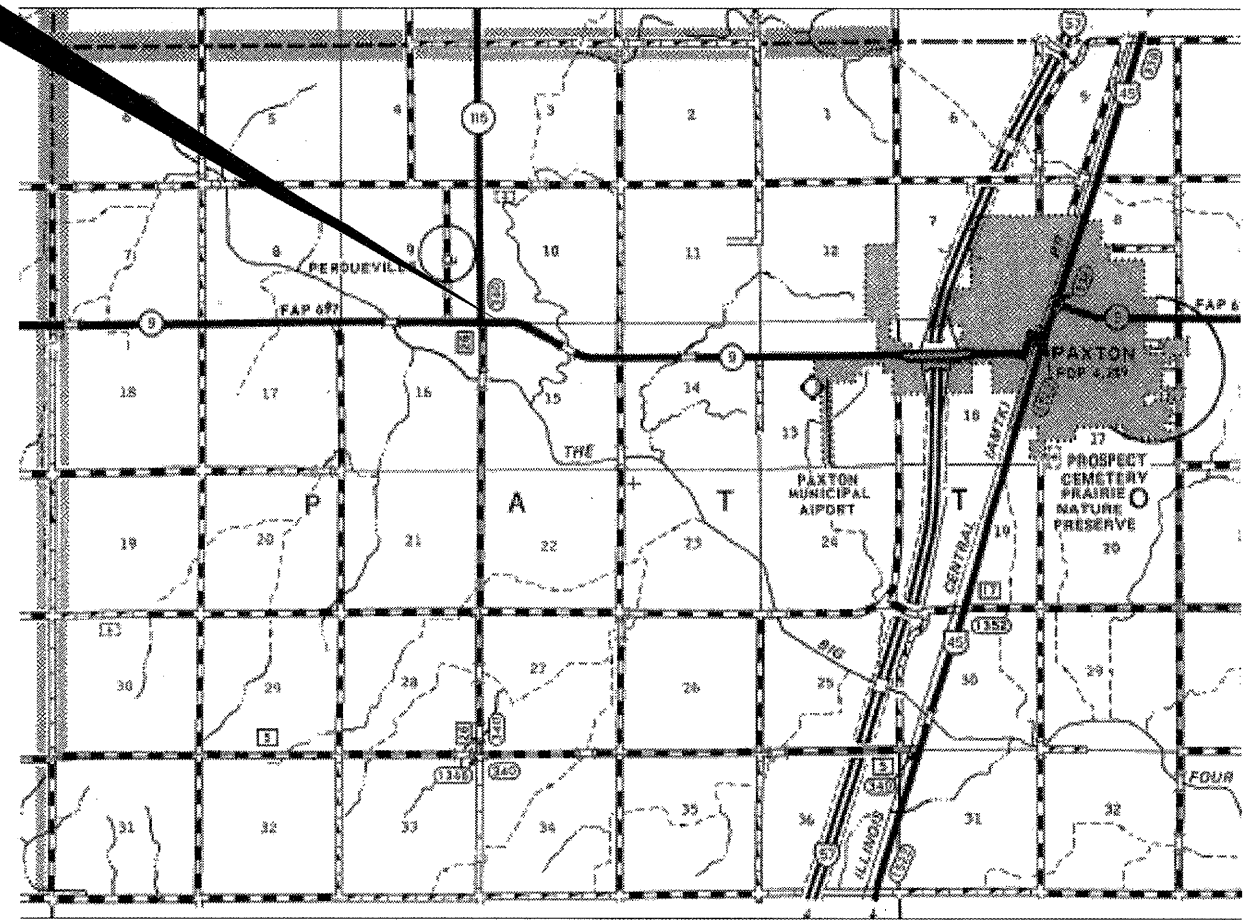


FULL SIZE PLANS HAVE BEEN PREPARED USING STANDARD ENGINEERING SCALES. REDUCED SIZED PLANS WILL NOT CONFORM TO STANDARD SCALES. IN MAKING MEASUREMENTS ON REDUCED PLANS, THE ABOVE SCALES MAY BE USED.

J.U.L.I.E.  
JOINT UTILITY LOCATION INFORMATION FOR EXCAVATION  
1-800-892-0123  
OR 811

**PROJECT ENGINEER: JOE KANNEL  
UNIT CHIEF: RON WOODSHANK  
TOWNSHIP: PATTON**

**CONTRACT NO. 66B14**



POINT LOCATION