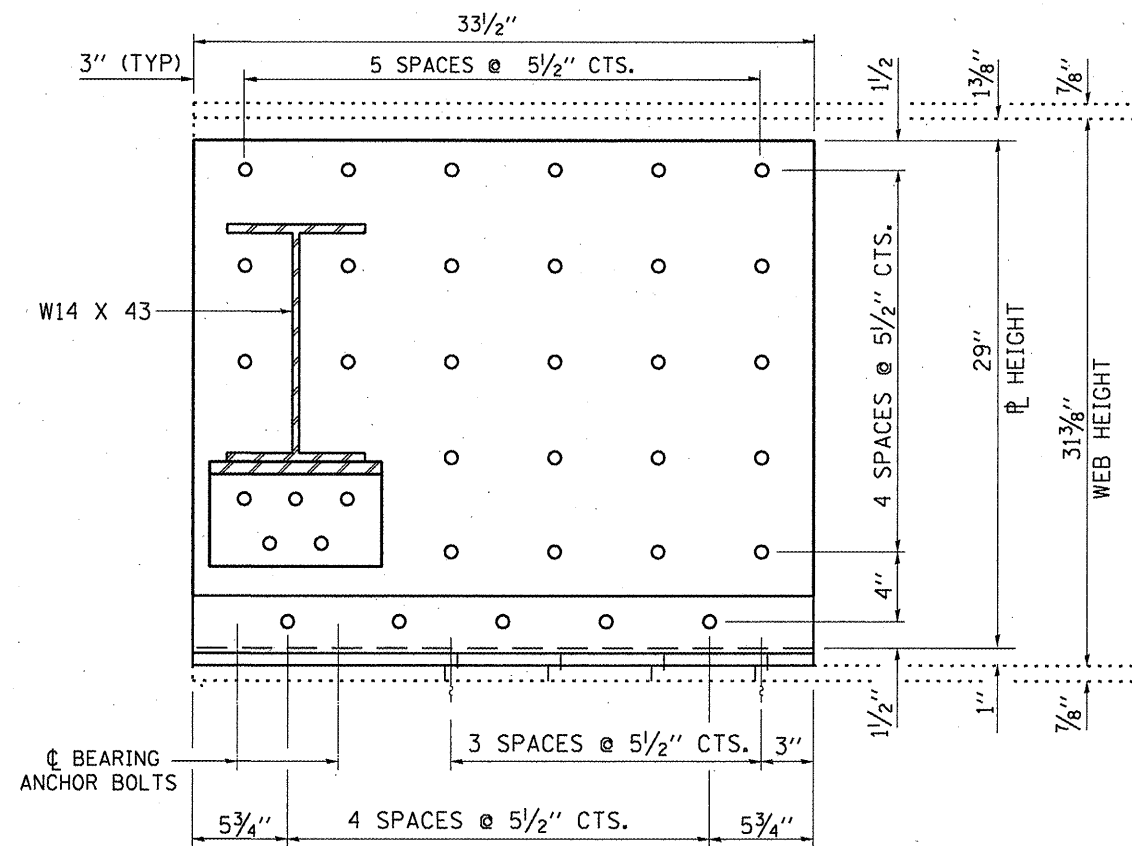
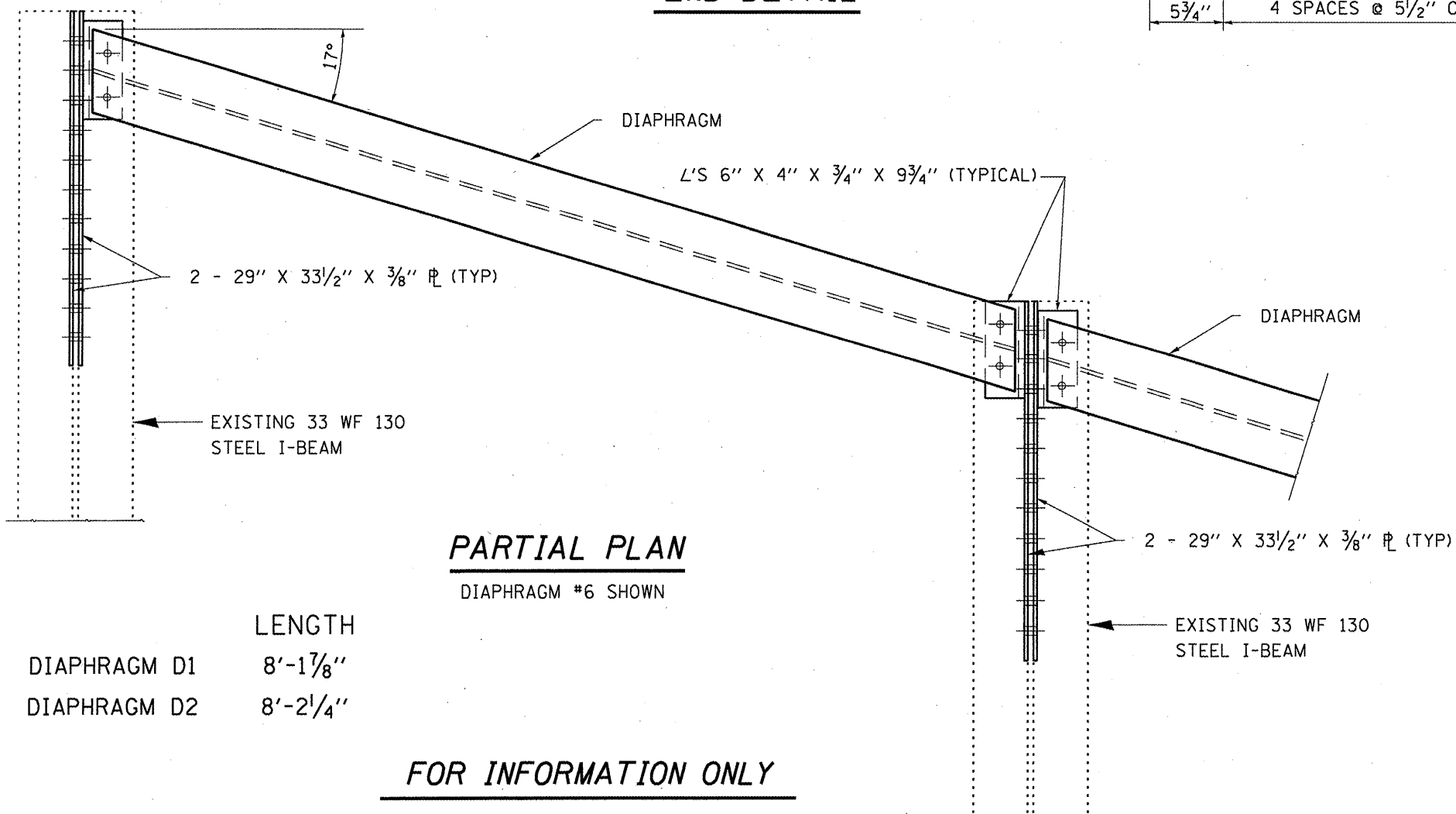


PARTIAL ELEVATION



END DETAIL



PARTIAL PLAN

DIAPHRAGM #6 SHOWN

FOR INFORMATION ONLY

STRUCTURAL STEEL DETAILS
FAP ROUTE 846
(IL 53)
SECTION (6B-1)BP
GRUNDY COUNTY
S.N. 032-0023

FILE NAME =	USER NAME = pateluj	DESIGNED - YOGESH PATEL	REVISED -
ct:\pwork\pvidot\pateluj\0257915\0366631-shs-cover.dgn		DRAWN - YOGESH PATEL	REVISED -
PLOT SCALE = 100.0065' / IN.		CHECKED - RON WOODSHANK	REVISED -
PLOT DATE = Apr 07, 2011 - 08:58:38 AM		DATE -	REVISED -

STATE OF ILLINOIS
DEPARTMENT OF TRANSPORTATION

EXISTING STRUCTURE PLANS

SCALE: SHEET NO. 2 OF 2 SHEETS STA. TO STA.

F.A.P. RTE.	SECTION	COUNTY	TOTAL SHEETS	SHEET NO.
846	(6B-1)BP	GRUNDY	11	11
			CONTRACT NO. 66B31	

[ILLINOIS]