

INDEX OF SHEETS

1. COVER SHEET
2. GENERAL NOTES
3. SUMMARY OF QUANTITIES
4. TYPICAL SECTION
5. STAGING - STAGE I
6. STAGING - STAGE II
- 7 - 11. EXISTING STRUCTURE PLANS - SN 032-0023

STANDARDS

000001-06	STANDARD SYMBOLS, ABBREVIATIONS AND PATTERNS
001006	DECIMAL OF AN INCH AND OF A FOOT
701001-02	OFF-RD OPERATIONS, 2L, 2W, MORE THAN 15' (4.5 m) AWAY
701006-03	OFF-RD OPERATIONS, 2L, 2W, 15' (4.5 m) TO 24" (600 mm) FROM EOP
701201-04	LANE CLOSURE, 2L, 2W, DAY ONLY, FOR SPEEDS > 45 MPH
701301-04	LANE CLOSURE, 2L, 2W, SHORT TIME OPERATIONS
701321-11	LANE CLOSURE, 2L, 2W, BRIDGE REPAIR WITH BARRIER
701901-01	TRAFFIC CONTROL DEVICES
704001-06	TEMPORARY CONCRETE BARRIER

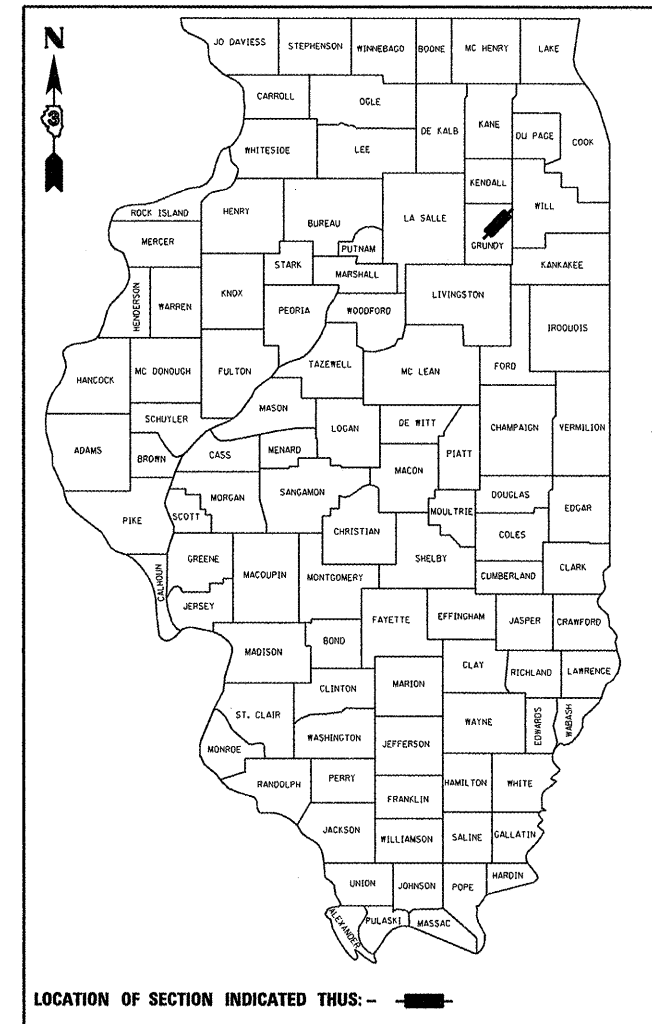
STATE OF ILLINOIS
DEPARTMENT OF TRANSPORTATION
DIVISION OF HIGHWAYS
**PROPOSED
HIGHWAY PLANS**

FAP ROUTE 846 (IL 53)
SECTION (6B-1)BP

**BRIDGE PAINTING
GRUNDY COUNTY**
C-93-096-11

F.A.P. RTE.	SECTION	COUNTY	TOTAL SHEETS	SHEET NO.
846	(6B-1)BP	GRUNDY	11	1
ILLINOIS				
CONTRACT NO. 66B31				

D-93-077-11



LOCATION OF SECTION INDICATED THUS: - ■ -

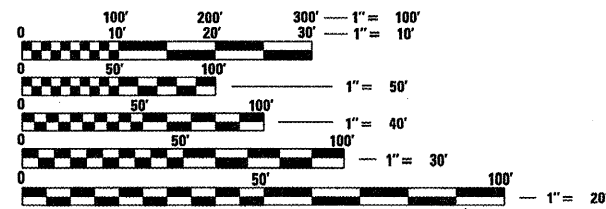
FUNCTIONAL CLASSIFICATION

RURAL - MINOR ARTERIAL

FAP ROUTE 846 (IL 53)

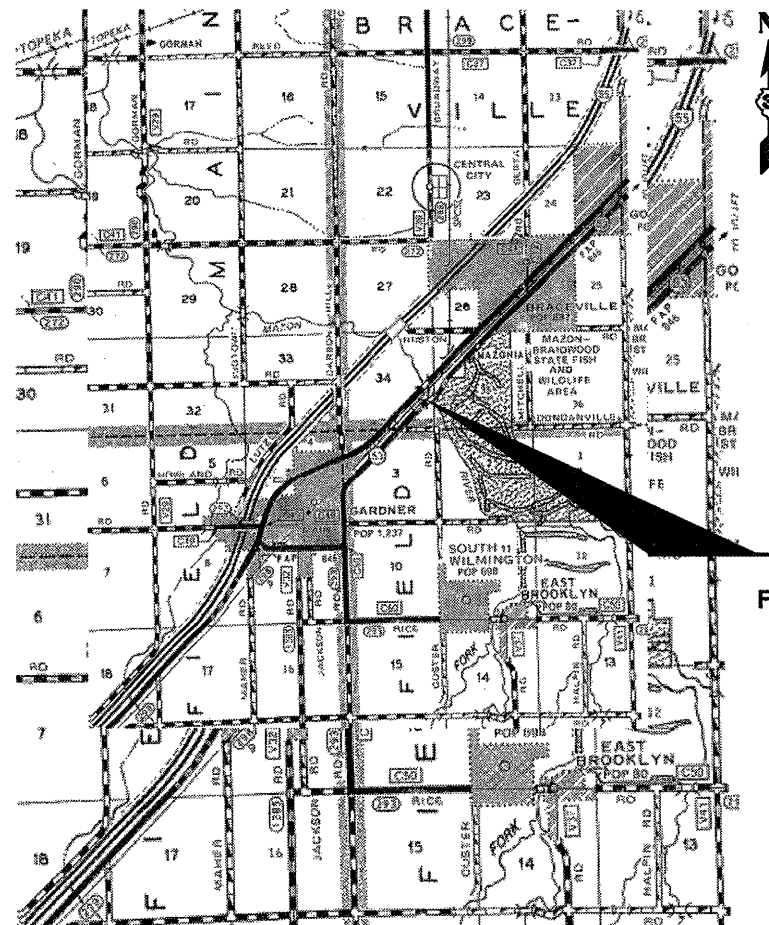
2010 ADT: 1650

P.V. 89.4% M.U. 3.03% S.U. 7.58%



FULL SIZE PLANS HAVE BEEN PREPARED USING STANDARD ENGINEERING SCALES. REDUCED SIZED PLANS WILL NOT CONFORM TO STANDARD SCALES. IN MAKING MEASUREMENTS ON REDUCED PLANS, THE ABOVE SCALES MAY BE USED.

J.U.L.I.E.
JOINT UTILITY LOCATION INFORMATION FOR EXCAVATION
1-800-892-0123
OR 811



PROJECT LOCATION

FAP ROUTE 846 (IL 53) OVER MAZON RIVER
1.3 MILES NORTH OF GARDNER
SECTION (6B-1)BP
S.N. 032-0023

POINT LOCATION

PROJECT ENGINEER: JOE KANNEL
UNIT CHIEF: RON WOODSHANK
TOWNSHIPS: BRACEVILLE

CONTRACT NO. 66B31

STATE OF ILLINOIS
DEPARTMENT OF TRANSPORTATION
DIVISION OF HIGHWAYS

SUBMITTED 4/7 20 11
Eric S. Theobald
DEPUTY DIRECTOR OF HIGHWAYS, REGION ENGINEER

May 13 20 11
Scott E. Stitt, P.E.
ACTING ENGINEER OF DESIGN AND ENVIRONMENT

May 13 20 11
Christine M. Reed
DIRECTOR OF HIGHWAYS, CHIEF ENGINEER

PRINTED BY THE AUTHORITY
OF THE STATE OF ILLINOIS

GENERAL NOTES

PLAN DIMENSIONS AND DETAILS RELATIVE TO THE EXISTING PLANS ARE SUBJECT TO ROUTINE VARIATIONS. THE CONTRACTOR SHALL FIELD VERIFY EXISTING DIMENSIONS AND DETAILS AFFECTING NEW CONSTRUCTION AND MAKE NECESSARY APPROVED ADJUSTMENTS PRIOR TO CONSTRUCTION OR ORDERING OF MATERIALS. SUCH VARIATIONS SHALL NOT BE CAUSE FOR ADDITIONAL COMPENSATION FOR A CHANGE IN THE SCOPE OF THE WORK. HOWEVER, THE CONTRACTOR WILL BE PAID FOR THE QUANTITY FURNISHED BASED UPON THE UNIT BID PRICE FOR THE WORK.

THE CONTRACTOR SHALL BE RESPONSIBLE FOR PROTECTING UTILITY PROPERTY FROM CONSTRUCTION OPERATIONS AS OUTLINED IN ARTICLE 107.31 OF THE STANDARD SPECIFICATIONS. THE "JULIE" NUMBER IS 1-800-892-0123. A MINIMUM OF FORTY-EIGHT (48) HOURS ADVANCE NOTICE IS REQUIRED.

A MINIMUM OF 2 AIR MONITORS WILL BE REQUIRED TO MONITOR ABRASIVE BLASTING AT THIS SITE. SEE SPECIAL PROVISIONS FOR "CONTAINMENT AND DISPOSAL OF LEAD PAINT CLEANING RESIDUES".

FOR STABILIZATION, ALL TYPE III BARRICADES SHALL REQUIRE A MINIMUM OF FOUR SAND BAGS PER BARRICADE.

ANY REFERENCE TO A STANDARD IN THESE PLANS SHALL BE INTERPRETED TO MEAN THE EDITION AS INDICATED BY THE SUBNUMBER SHOWN IN THE LIST OF STANDARDS OR THE COPY INCLUDED IN THESE PLANS.

THE CONTRACTOR SHALL BE REQUIRED TO SECURE WASTE CONTAINERS THAT REMAIN ON THE JOB SITE. THIS WILL ENTAIL THAT ALL WASTE CONTAINERS CAN NOT BE MOVED OR OPENED DURING NON-WORKING HOURS.

WORKING DAYS SHALL BE CHARGED UNTIL THE CONTRACTOR/SUBCONTRACTOR LISCENSED TO DISPOSE OF LEAD PAINT REDIDUE HAS REMOVED THE WASTE MATERIAL FROM THE JOB SITE ACCORDING TO ALL FEDERAL, STATE AND LOCAL LAWS AND ORDINANCES.

THE EXISTING STRUCTURAL STEEL ON SN 032-0023 CONTAINS LEAD THE CONTRACTOR SHOULD TAKE APPROPRIATE PRECAUTIONS TO DEAL WITH THE PRESENCE OF LEAD PAINT ON THIS PROJECT.

THE SSPC-QP1 AND SSPC-QP2 "PAINTING CONTRACTOR CERTIFICATIONS" WILL BE REQUIRED FOR THIS PROJECT.

LOCATION 1: SN 032-0023
CLEANING AND PAINTING OF THE EXISTING STRUCTURAL STEEL SHALL BE AS SPECIFIED IN THE SPECIAL PROVISION FOR "CLEANING AND PAINTING EXISTING STEEL STRUCTURES". ALL EXTERIOR AND INTERIOR SURFACES OF THE BEAMS, DIAPHRAGMS, SCUPPERS, BEARING ASSEMBLIES AND ALL OTHER ASSOCIATED STEEL COMPONENTS SHALL BE CLEANED PER "NEAR WHITE BLAST CLEANING - SSPC-SP10". ALL EXISTING STEEL SHALL BE PAINTED ACCORDING TO THE REQUIREMENTS OF "PAINT SYSTEM 1 - OZ/E/U". THE COLOR OF THE FINAL FINISH COAT FOR ALL INTERIOR STEEL SURFACES SHALL BE "GRAY, MUNSELL NO. 5B 7/1". THE COLOR OF THE FINAL FINISH COAT FOR THE EXTERIOR, BOTTOM FLANGE AND BEARING ASSEMBLIES OF THE FASCIA BEAMS SHALL BE "GREEN, MUNSELL NO. 7.5G 4/8".

DATE: 4/7/2011

PREPARED BY: Dave Brown
DISTRICT STUDIES & PLANS ENGINEER

EXAMINED BY: [Signature]
DISTRICT CONSTRUCTION ENGINEER

Wayne L. Phillips
DISTRICT MATERIALS ENGINEER

[Signature]
DISTRICT OPERATIONS ENGINEER

FILE NAME =	USER NAME = potelij	DESIGNED - YOGESH PATEL	REVISED -	STATE OF ILLINOIS DEPARTMENT OF TRANSPORTATION	GENERAL NOTES	F.A.P. RTE.	SECTION	COUNTY	TOTAL SHEETS	SHEET NO.
cd:\pw\work\pwidot\potelij\02257915\0366831-shd-cover.dgn	DRAWN - YOGESH PATEL	REVISED -	846			IGB-1JP	GRUNDY	11	2	
PLOT SCALE = 1/8" = 1/8" IN.	CHECKED - RON WOODSHANK	REVISED -	CONTRACT NO. 66B31							
PLOT DATE = Apr 07, 2011 - 08:55:28 AM	DATE -	REVISED -	ILLINOIS							
				SCALE: _____ SHEET NO. 1 OF 1 SHEETS STA. _____ TO STA. _____						

CODE NO.	ITEM	UNIT	TOTAL QUANTITY	CONSTR. CODE
				STATE FUNDS 100% STATE STRUCTURE 0014 RURAL
50606701	CLEANING AND PAINTING STEEL BRIDGE LOCATION 1	L SUM	1	1
Z0007112	CONTAINMENT AND DISPOSAL OF LEAD PAINT CLEANING RESIDUES	L SUM	1	1
67100100	MOBILIZATION	L SUM	1	1
70100450	TRAFFIC CONTROL AND PROTECTION, STANDARD 701201	L SUM	1	1
70100405	TRAFFIC CONTROL AND PROTECTION, STANDARD 701321	EACH	1	1
70106500	TEMPORARY BRIDGE TRAFFIC SIGNALS	EACH	1	1
70400100	TEMPORARY CONCRETE BARRIER	FOOT	260	260
70400200	RELOCATE TEMPORARY CONCRETE BARRIER	FOOT	260	260
X5067500	BRIDGE CLEANING AND PAINTING WARRANTY	L SUM	1	1
Z0030250	IMPACT ATTENUATORS, TEMPORARY (NON-REDIRECTIVE), TEST LEVEL 3	EACH	2	2
Z0030350	IMPACT ATTENUATORS, RELOCATE (NON-REDIRECTIVE), TEST LEVEL 3	EACH	2	2

FILE NAME =	USER NAME = patelij	DESIGNED - YOGESH PATEL	REVISED -
ca\pwwork\pwwid\patelij\08257915\0366831-sht-coover.dgn		DRAWN - YOGESH PATEL	REVISED -
	PLOT SCALE = 100.0065' / IN.	CHECKED - RON WOODSHANK	REVISED -
	PLOT DATE = Apr 07, 2011 - 08:55:46 AM	DATE -	REVISED -

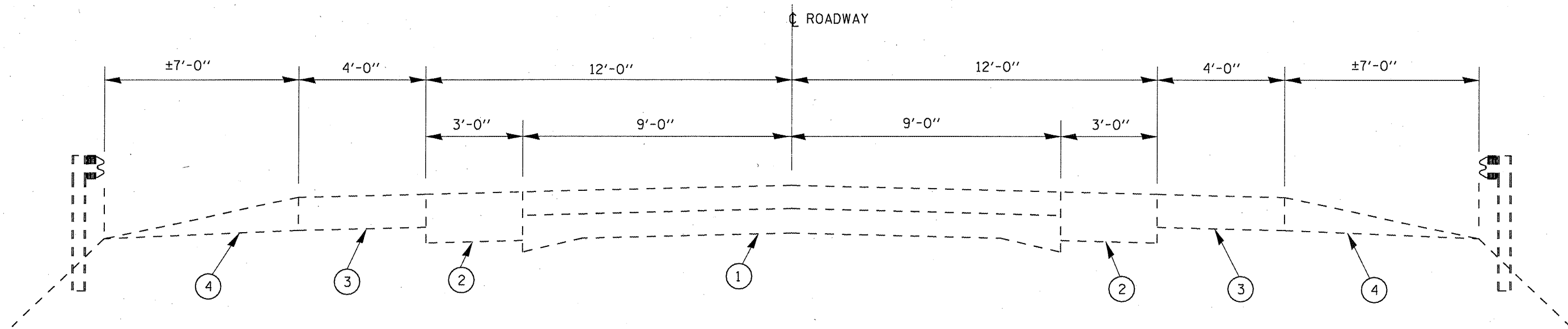
**STATE OF ILLINOIS
DEPARTMENT OF TRANSPORTATION**

SUMMARY OF QUANTITIES

SCALE: _____ SHEET NO. 1 OF 1 SHEETS STA. _____ TO STA. _____

F.A.P. RTE.	SECTION	COUNTY	TOTAL SHEETS	SHEET NO.
846	(6B-1)BP	GRUNDY	11	3
			CONTRACT NO. 66B31	
[ILLINOIS]				

Rev.

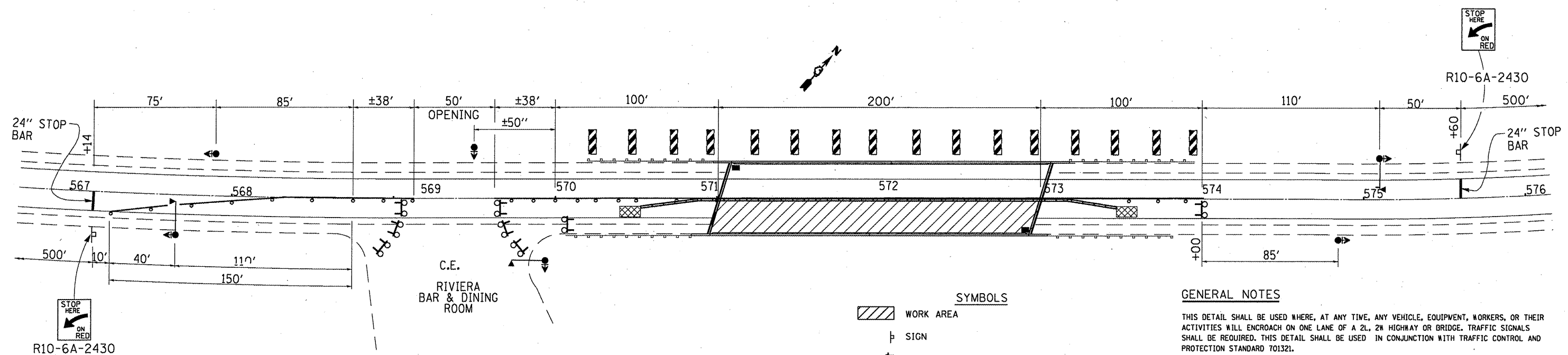
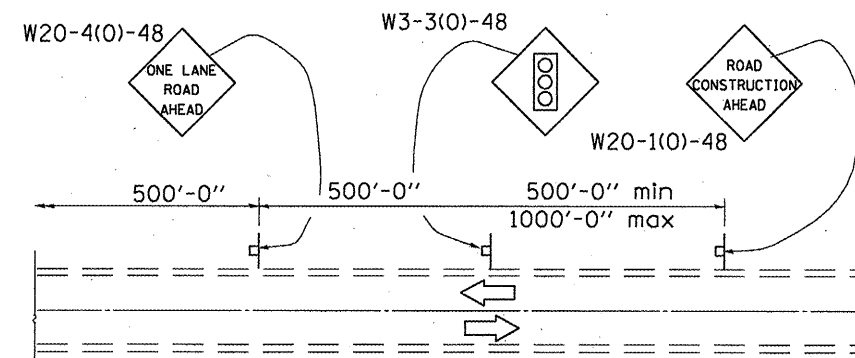
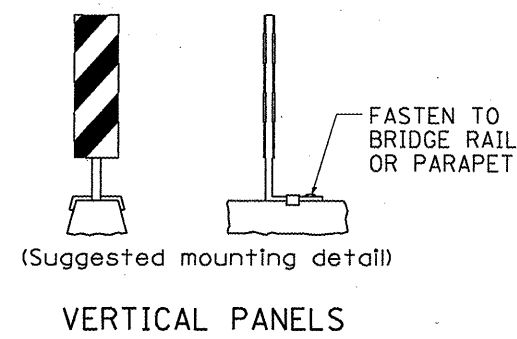
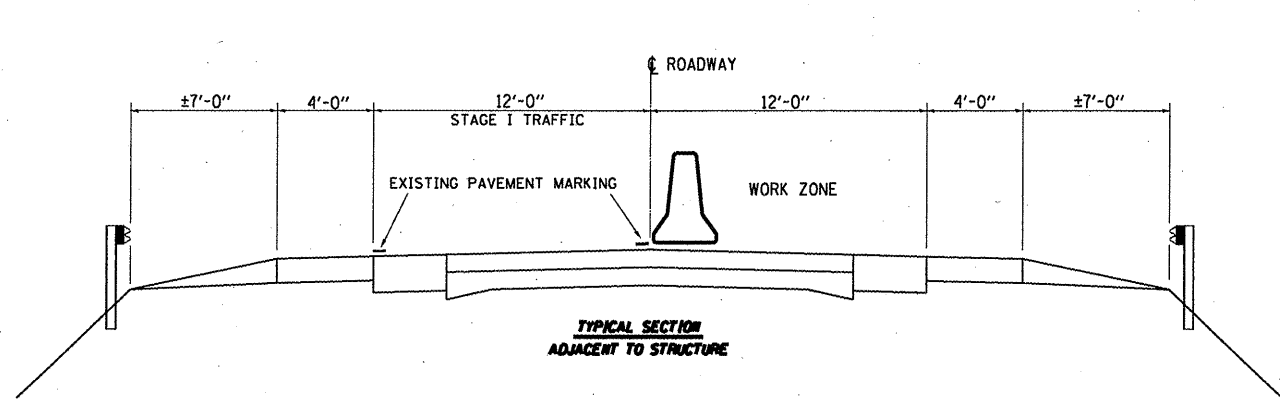


TYPICAL SECTION
ADJACENT TO STRUCTURE

LENGEND

- ① EXISTING CONCRETE PAVEMENT WITH HOT-MIX ASPHALT OVERLAY
- ② HOT-MIX ASPHALT WIDENING 10"
- ③ HOT-MIX ASPHALT SHOULDER 8"
- ④ AGGREGATE SHOULDER

FILE NAME =	USER NAME = patelijj	DESIGNED - YOGESH PATEL	REVISED -	STATE OF ILLINOIS DEPARTMENT OF TRANSPORTATION	TYPICAL SECTION	F.A.P. RTE.	SECTION	COUNTY	TOTAL SHEETS	SHEET NO.
ca:\pwork\pwork\patelijj\0257915\0366831-shr-cover.dgn	DRAWN - YOGESH PATEL	REVISED -	846			(6B-1)BP	GRUNDY	11	4	
PLOT SCALE = 99.9917' / IN.	CHECKED - RON WOODSHANK	REVISED -	CONTRACT NO. 66B31							
PLOT DATE = Apr 07, 2011 - 08:56:11 AM	DATE -	REVISED -	ILLINOIS							
				SCALE: _____ SHEET NO. 1 OF 1 SHEETS STA. _____ TO STA. _____						



- SYMBOLS**
- WORK AREA
 - SIGN
 - TYPE III BARRICADE WITH STEADY BURNING LIGHT
 - DRUM WITH STEADY BURNING LIGHT
 - TRAFFIC SIGNAL WITH BACKPLATE
 - DOUBLE VERTICAL PANEL
 - MICROWAVE DETECTOR
 - IMPACT ATTENUATOR
 - TEMPORARY CONCRETE BARRIER
 - AIR MONITORS

GENERAL NOTES

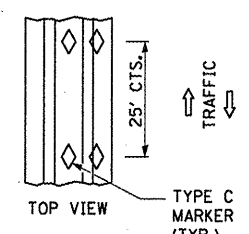
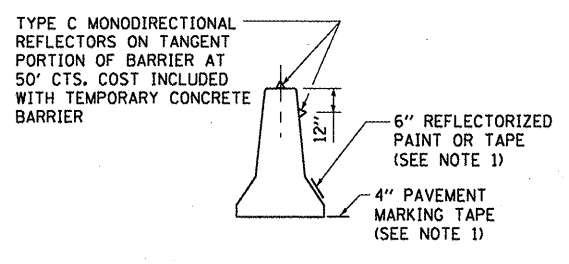
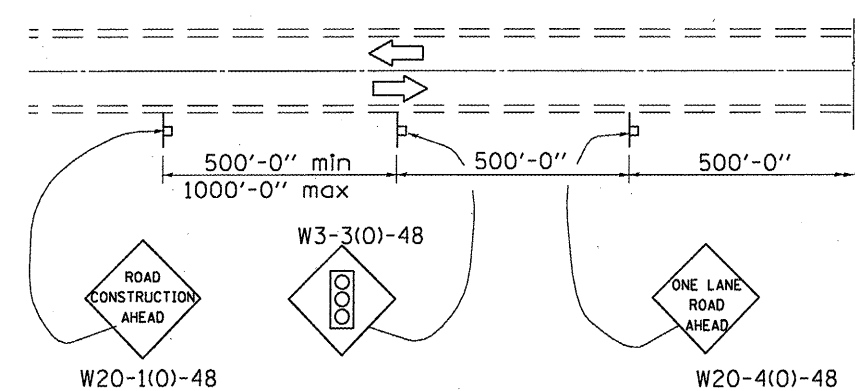
THIS DETAIL SHALL BE USED WHERE, AT ANY TIME, ANY VEHICLE, EQUIPMENT, WORKERS, OR THEIR ACTIVITIES WILL ENCOACH ON ONE LANE OF A 2L, 2M HIGHWAY OR BRIDGE. TRAFFIC SIGNALS SHALL BE REQUIRED. THIS DETAIL SHALL BE USED IN CONJUNCTION WITH TRAFFIC CONTROL AND PROTECTION STANDARD 701321.

WHEN TRAFFIC SIGNALS ARE NOT IN OPERATION, FLAGGERS SHALL BE USED AND TRAFFIC CONTROL SHALL CONFORM TO TRAFFIC CONTROL AND PROTECTION STANDARDS 701201 OR 701206.

BIDIRECTIONAL LIGHTS SHALL BE USED AT NIGHT ALONG THE CENTERLINE WHERE THE WORK AREA IS SEPARATED FROM THE TRAVEL LANE USING DRUMS. MONO DIRECTIONAL LIGHTS SHALL BE USED AT NIGHT ON ALL OTHER DRUMS.

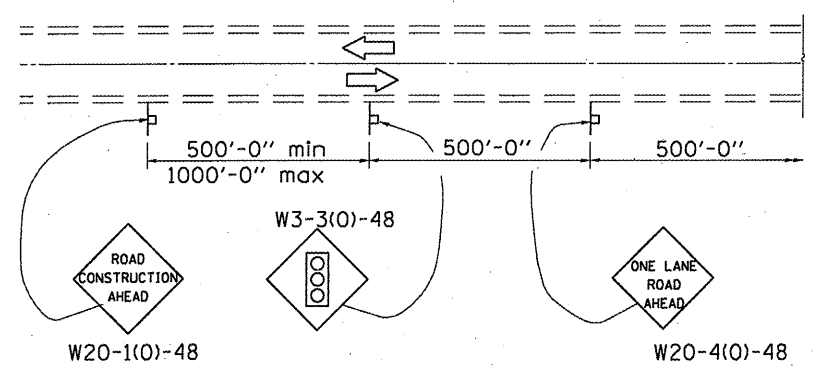
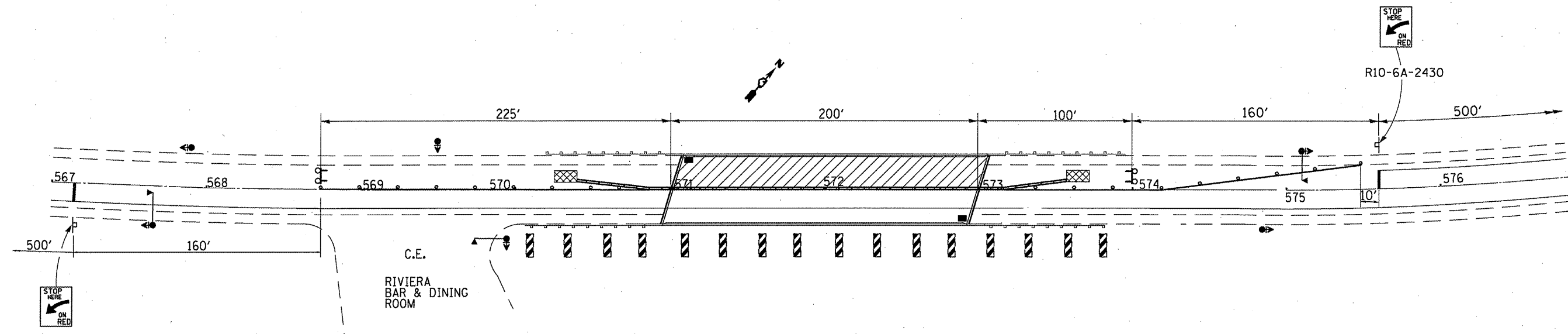
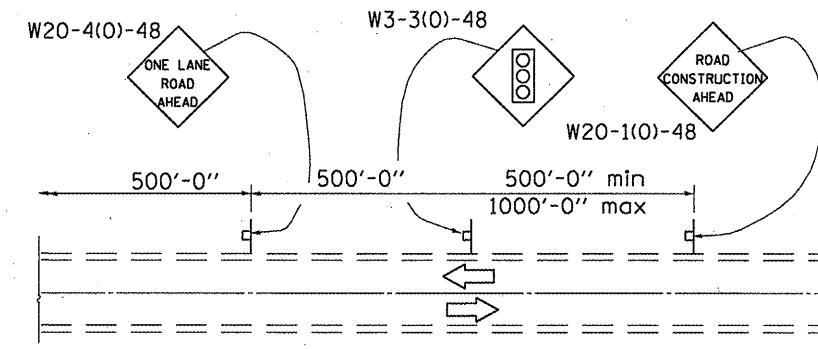
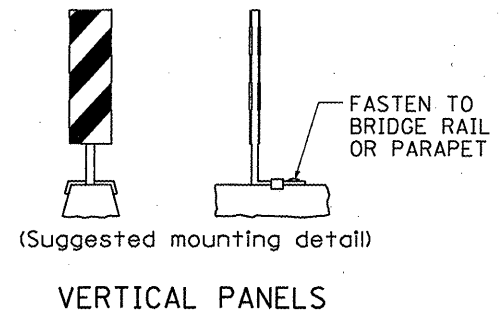
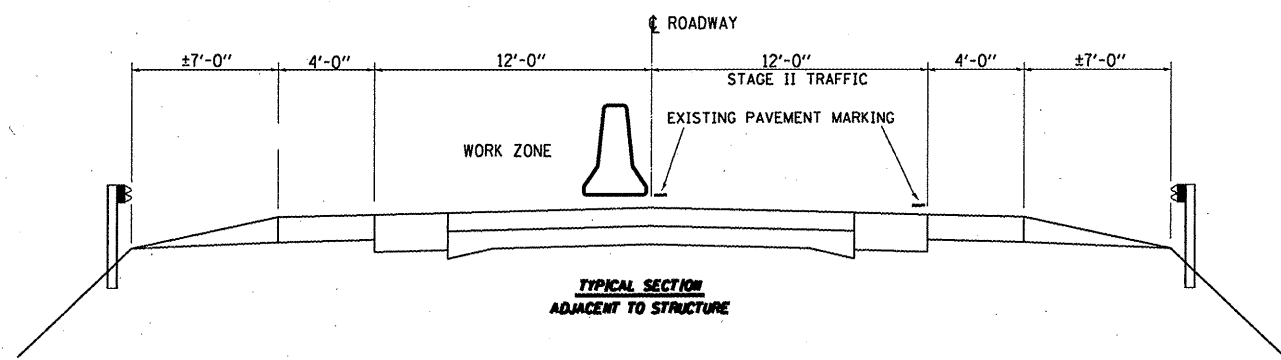
EXISTING OR TEMPORARY PAVEMENT MARKING SHALL BE ON BOTH SIDES OF THE OPEN LANE FROM STOP BAR TO STOP BAR. REQUIRED TEMPORARY PAVEMENT MARKING SHALL NOT BE PAID FOR SEPARATELY BUT SHALL BE INCLUDED IN THE COST OF THE TRAFFIC CONTROL AND PROTECTION, STANDARD 701321.

RELOCATION OF TRAFFIC CONTROL DEVICES FOR STAGING SHALL NOT BE PAID FOR SEPARATELY BUT SHALL BE INCLUDED IN THE COST OF TRAFFIC CONTROL AND PROTECTION, STANDARD 701321.



BILL OF MATERIAL

ITEM	UNIT	TOTAL
TEMPORARY CONCRETE BARRIER	FOOT	260



- SYMBOLS**
- WORK AREA
 - SIGN
 - TYPE III BARRICADE WITH STEADY BURNING LIGHT
 - DRUM WITH STEADY BURNING LIGHT
 - TRAFFIC SIGNAL WITH BACKPLATE
 - DOUBLE VERTICAL PANEL
 - MICROWAVE DETECTOR
 - IMPACT ATTENUATOR
 - TEMPORARY CONCRETE BARRIER
 - AIR MONITORS

GENERAL NOTES

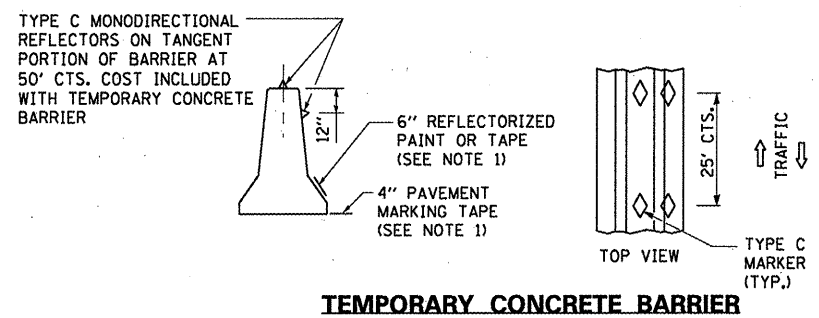
THIS DETAIL SHALL BE USED WHERE, AT ANY TIME, ANY VEHICLE, EQUIPMENT, WORKERS, OR THEIR ACTIVITIES WILL ENCR OACH ON ONE LANE OF A 2L, 2M HIGHWAY OR BRIDGE. TRAFFIC SIGNALS SHALL BE REQUIRED. THIS DETAIL SHALL BE USED IN CONJUNCTION WITH TRAFFIC CONTROL AND PROTECTION STANDARD 701321.

WHEN TRAFFIC SIGNALS ARE NOT IN OPERATION, FLAGGERS SHALL BE USED AND TRAFFIC CONTROL SHALL CONFORM TO TRAFFIC CONTROL AND PROTECTION STANDARDS 701201 OR 701206.

BIDIRECTIONAL LIGHTS SHALL BE USED AT NIGHT ALONG THE CENTERLINE WHERE THE WORK AREA IS SEPARATED FROM THE TRAVEL LANE USING DRUMS. MONO DIRECTIONAL LIGHTS SHALL BE USED AT NIGHT ON ALL OTHER DRUMS.

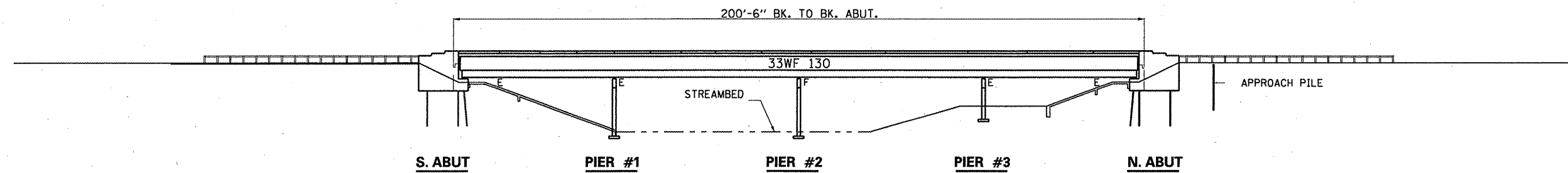
EXISTING OR TEMPORARY PAVEMENT MARKING SHALL BE ON BOTH SIDES OF THE OPEN LANE FROM STOP BAR TO STOP BAR. REQUIRED TEMPORARY PAVEMENT MARKING SHALL NOT BE PAID FOR SEPARATELY BUT SHALL BE INCLUDED IN THE COST OF THE TRAFFIC CONTROL AND PROTECTION, STANDARD 701321.

RELOCATION OF TRAFFIC CONTROL DEVICES FOR STAGING SHALL NOT BE PAID FOR SEPARATELY BUT SHALL BE INCLUDED IN THE COST OF TRAFFIC CONTROL AND PROTECTION, STANDARD 701321.

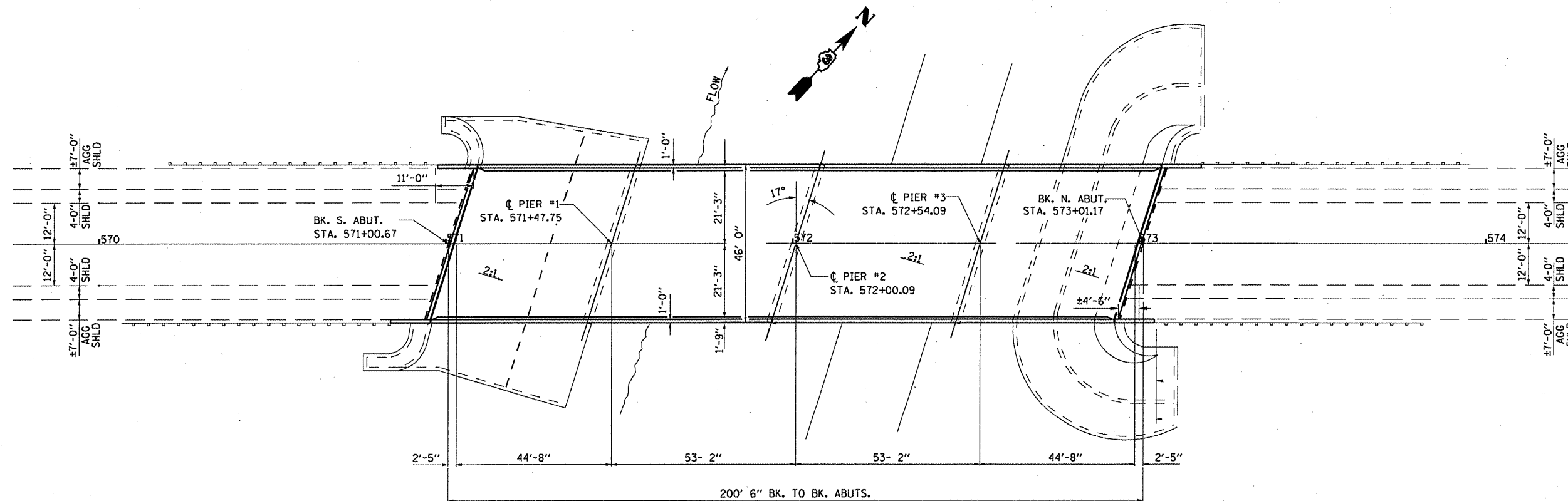


BILL OF MATERIAL

ITEM	UNIT	TOTAL
RELOCATE TEMPORARY CONCRETE BARRIER	FOOT	260



ELEVATION



PLAN

TOTAL BILL OF MATERIAL

ITEM	UNIT	TOTAL
CLEANING AND PAINTING STEEL BRIDGE NO. 1	L SUM	1
CONTAINMENT AND DISPOSAL OF LEAD BASED CLEANING RESIDUES	L SUM	1
BRIDGE CLEANING AND PAINTING WARRANTY	L SUM	1

**PLAN AND ELEVATION
FAP ROUTE 846
(IL 53)
SECTION (6B-1)BP
GRUNDY COUNTY
S.N. 032-0023**

FOR INFORMATION ONLY

FILE NAME =	USER NAME = pateluj	DESIGNED - YOGESH PATEL	REVISED -
ca:\pw-work\pindot\pateluj\d0257915\0366831-shr-cover.dgn		DRAWN - YOGESH PATEL	REVISED -
PLOT SCALE = 1/8" = 1' / IN.		CHECKED - RON WOODSHANK	REVISED -
PLOT DATE = Apr 07, 2011 - 08:57:20 AM		DATE -	REVISED -

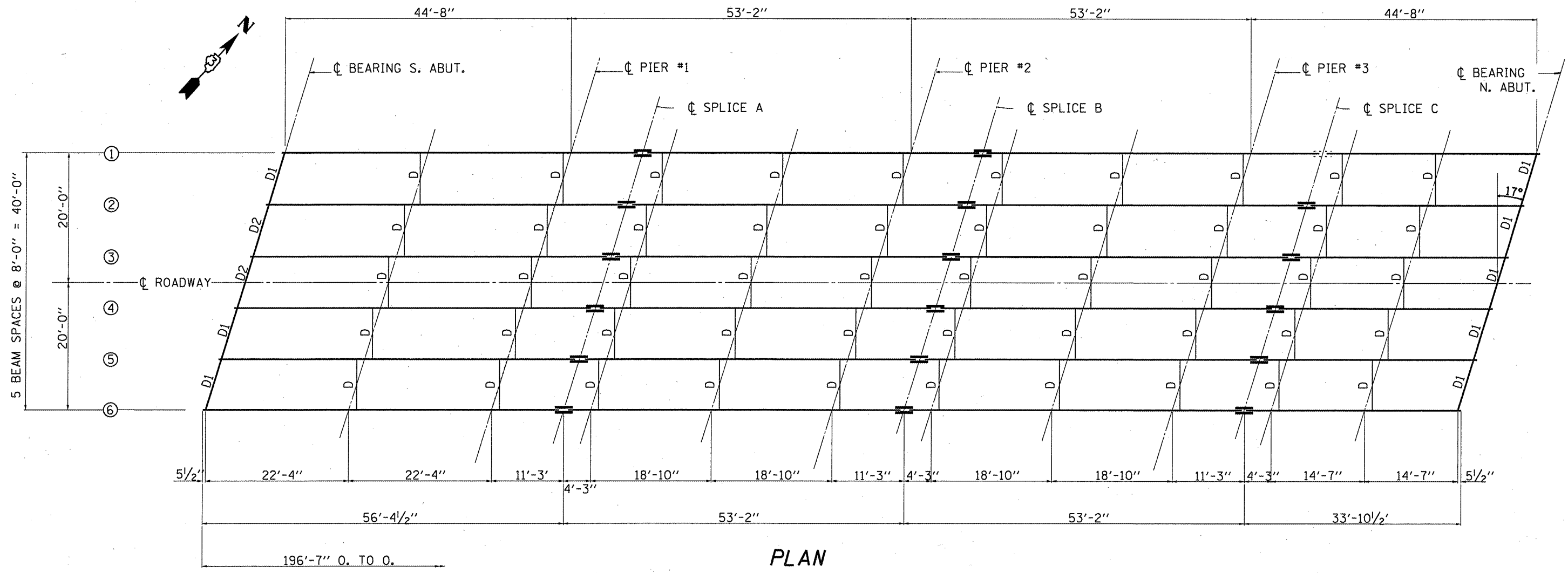
**STATE OF ILLINOIS
DEPARTMENT OF TRANSPORTATION**

EXISTING STRUCTURE PLANS

SCALE: SHEET NO. 2 OF 2 SHEETS STA. TO STA.

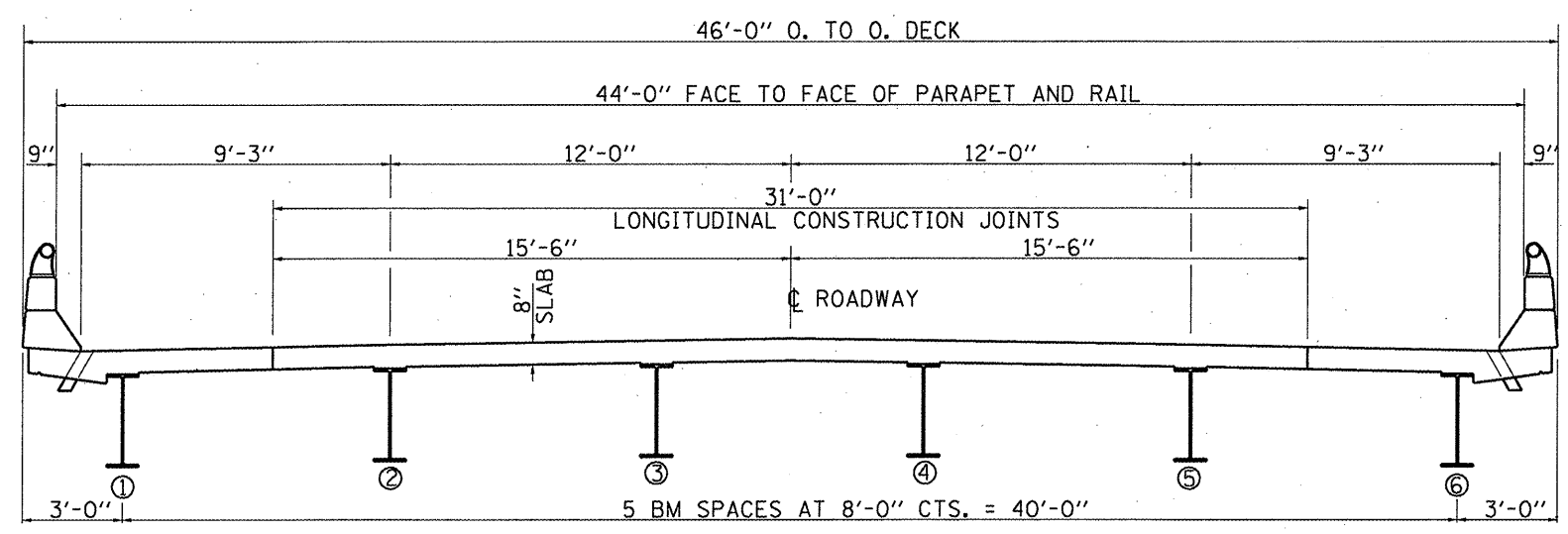
F.A.P. RTE.	SECTION	COUNTY	TOTAL SHEETS	SHEET NO.
846	(6B-1)BP	GRUNDY	11	7
			CONTRACT NO. 66B31	

ILLINOIS



PLAN

ALL BEAMS ARE 33WF130
 INTERIOR DIAPHRAGMS ARE 16WF36
 EXTERIOR DIAPHRAGMS ARE 14WF43



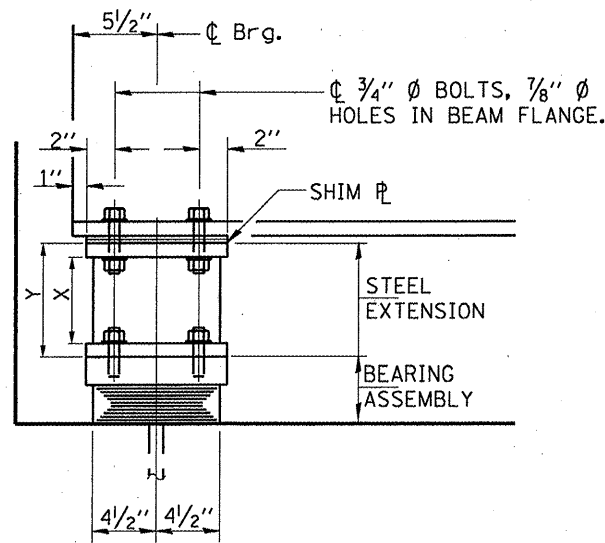
CROSS SECTION

LOOKING NORTH

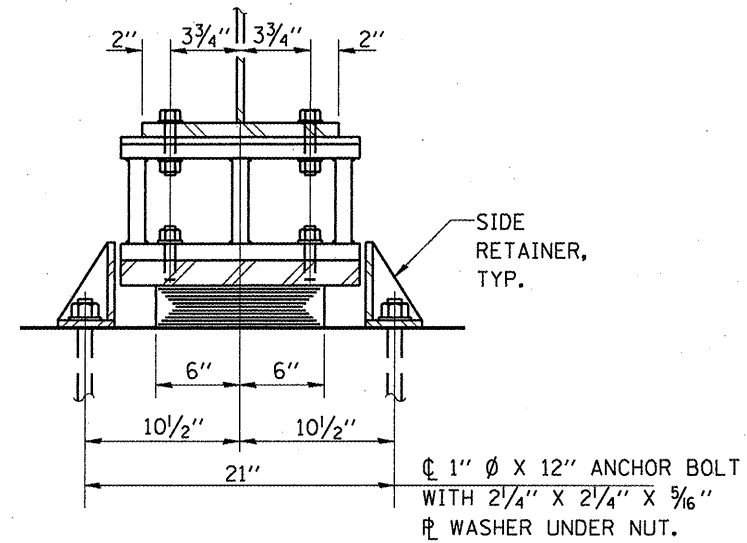
FOR INFORMATION ONLY

STRUCTURAL STEEL DETAILS
FAP ROUTE 846
(IL 53)
SECTION (6B-1)BP
GRUNDY COUNTY
S.N. 032-0023

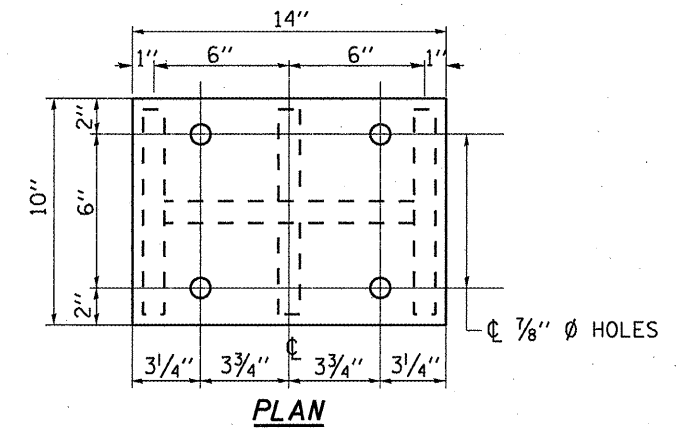
FILE NAME =	USER NAME = petelyj	DESIGNED - YOGESH PATEL	REVISED -	STATE OF ILLINOIS DEPARTMENT OF TRANSPORTATION	EXISTING STRUCTURE PLANS	F.A.P. RTE. 846	SECTION (6B-1)BP	COUNTY GRUNDY	TOTAL SHEETS 11	SHEET NO. 8
CONTRACT NO. 66B31	CONTRACT NO. 66B31	CONTRACT NO. 66B31	CONTRACT NO. 66B31			CONTRACT NO. 66B31	CONTRACT NO. 66B31			
SCALE: _____	SHEET NO. 2 OF 2 SHEETS	STA. _____	TO STA. _____			ILLINOIS				



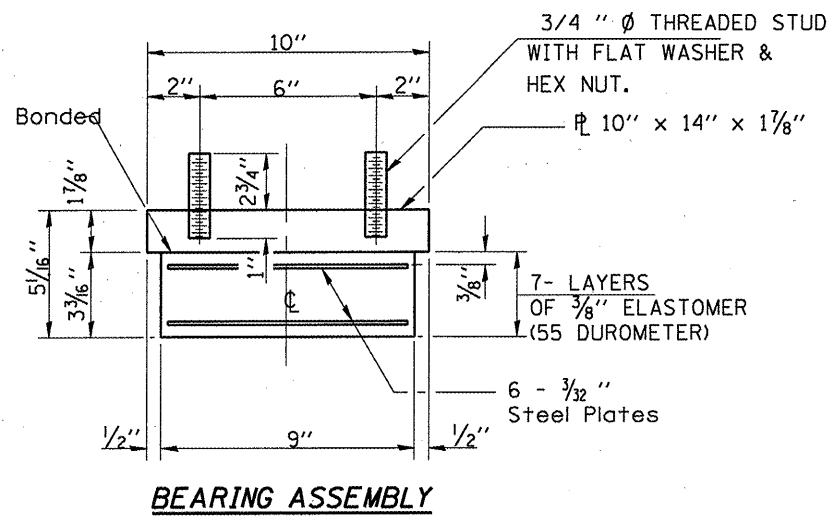
END ELEVATION AT ABUT.



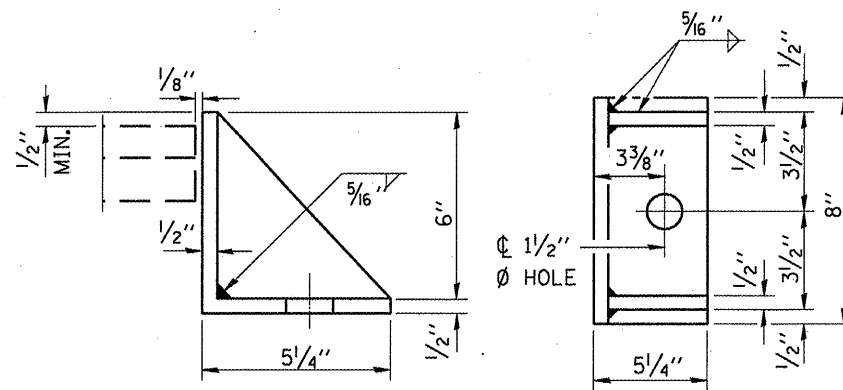
SIDE ELEVATION AT ABUT.



TYPE I ELASTOMERIC EXP. BEARING

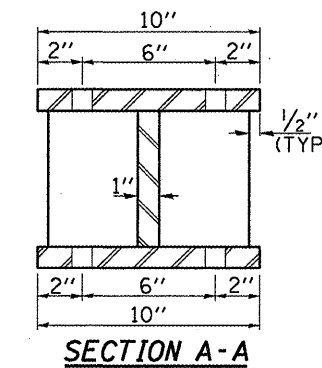


BEARING ASSEMBLY

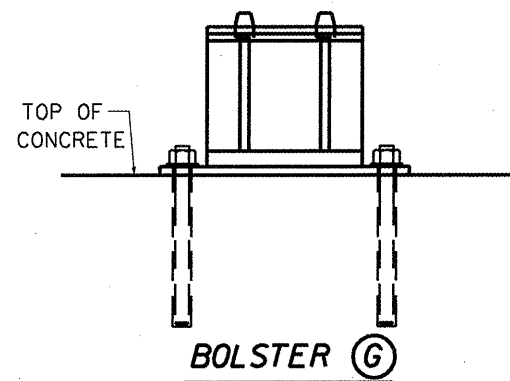
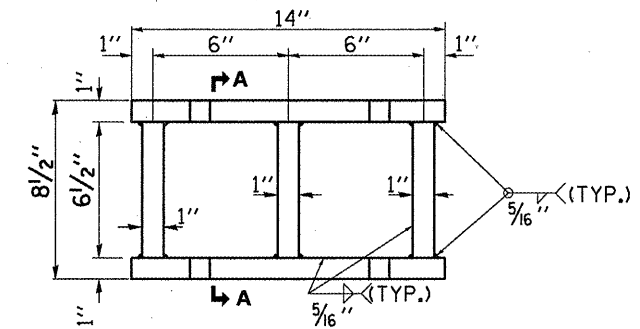


SIDE RETAINER

EQUIVALENT ROLLED ANGLE WITH STIFFENERS WILL BE ALLOWED IN LIEU OF WELDED PLATES.



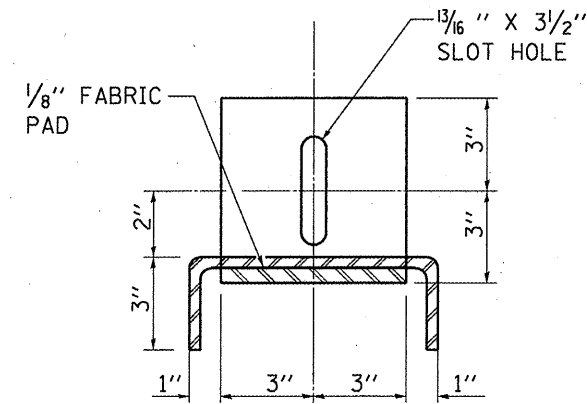
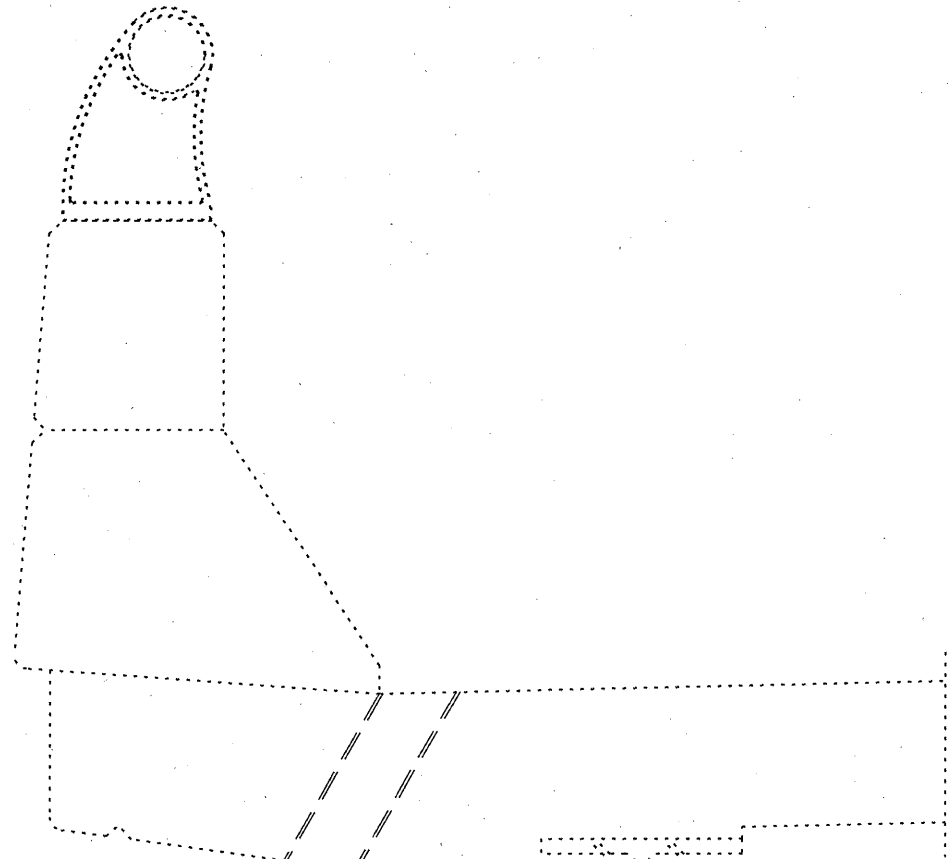
STEEL PEDESTAL



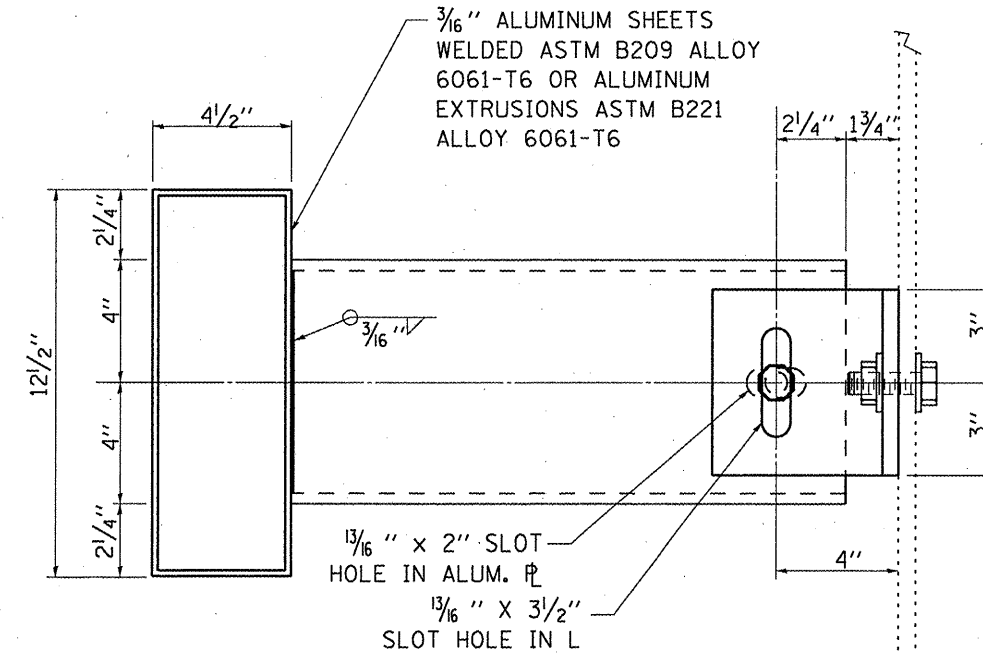
FOR INFORMATION ONLY

STRUCTURAL STEEL DETAILS
 FAP ROUTE 846
 (IL 53)
 SECTION (6B-1)BP
 GRUNDY COUNTY
 S.N. 032-0023

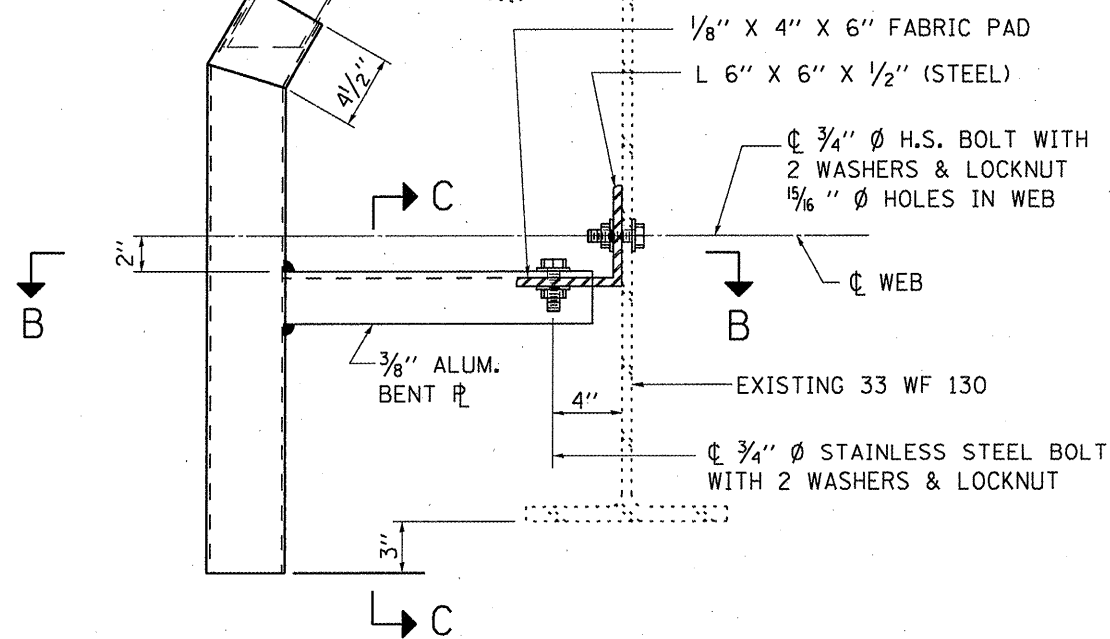
FILE NAME =	USER NAME = potalij	DESIGNED - YOGESH PATEL	REVISED -	STATE OF ILLINOIS DEPARTMENT OF TRANSPORTATION	EXISTING STRUCTURE PLANS	F.A.P. RTE. 846	SECTION (6B-1)BP	COUNTY GRUNDY	TOTAL SHEETS 11	SHEET NO. 9	
CONTRACT NO. 66B31	CONTRACT NO. 66B31	CONTRACT NO. 66B31	CONTRACT NO. 66B31			CONTRACT NO. 66B31	CONTRACT NO. 66B31	CONTRACT NO. 66B31	CONTRACT NO. 66B31	CONTRACT NO. 66B31	CONTRACT NO. 66B31
PLOT SCALE = 100.0119 / IN.	CHECKED - RON WOODSHANK	REVISOR -	REVISOR -			SCALE: _____	SHEET NO. 2 OF 2 SHEETS	STA. _____	TO STA. _____	ILLINOIS	
PLOT DATE = Apr 07, 2011 - 08:58:01 AM	DATE -	REVISOR -	REVISOR -								



SECTION C-C



SECTION B-B



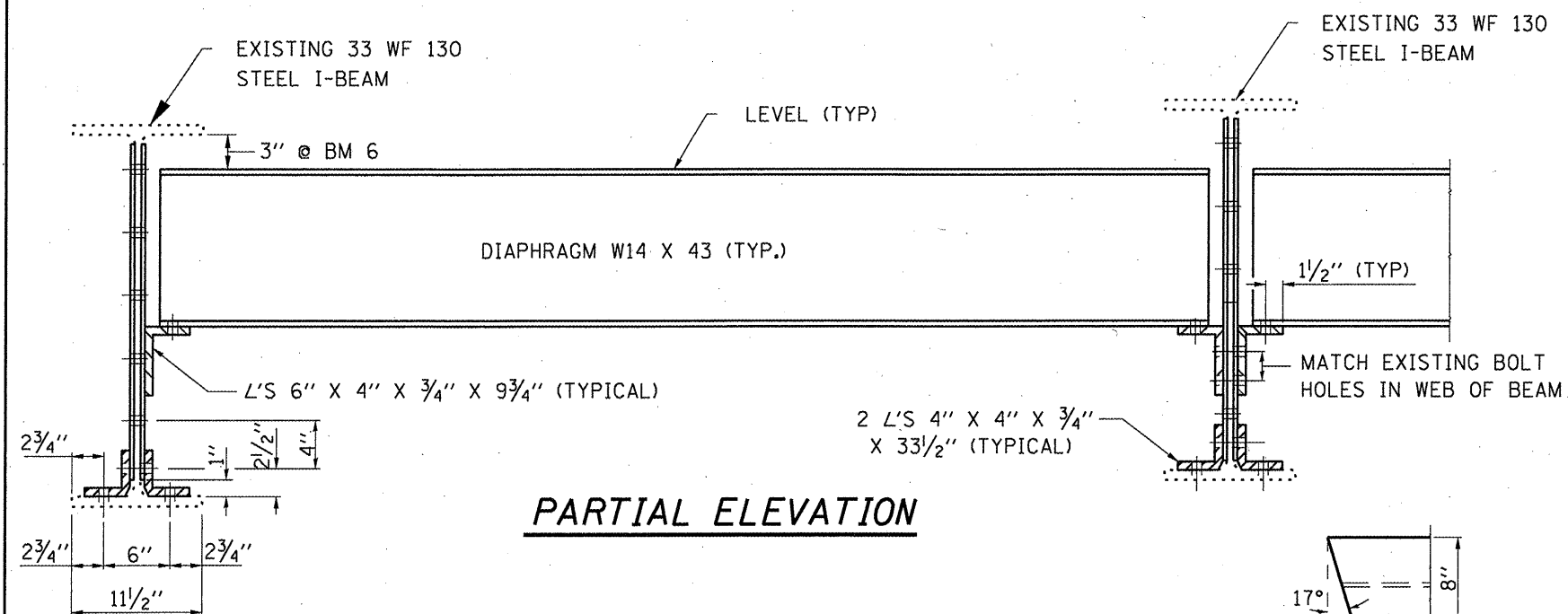
SECTION AT DRAIN

DRAIN

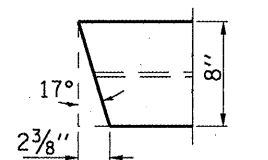
FOR INFORMATION ONLY

**DRAIN DETAILS
FAP ROUTE 846
(IL 53)
SECTION (6B-1)BP
GRUNDY COUNTY
S.N. 032-0023**

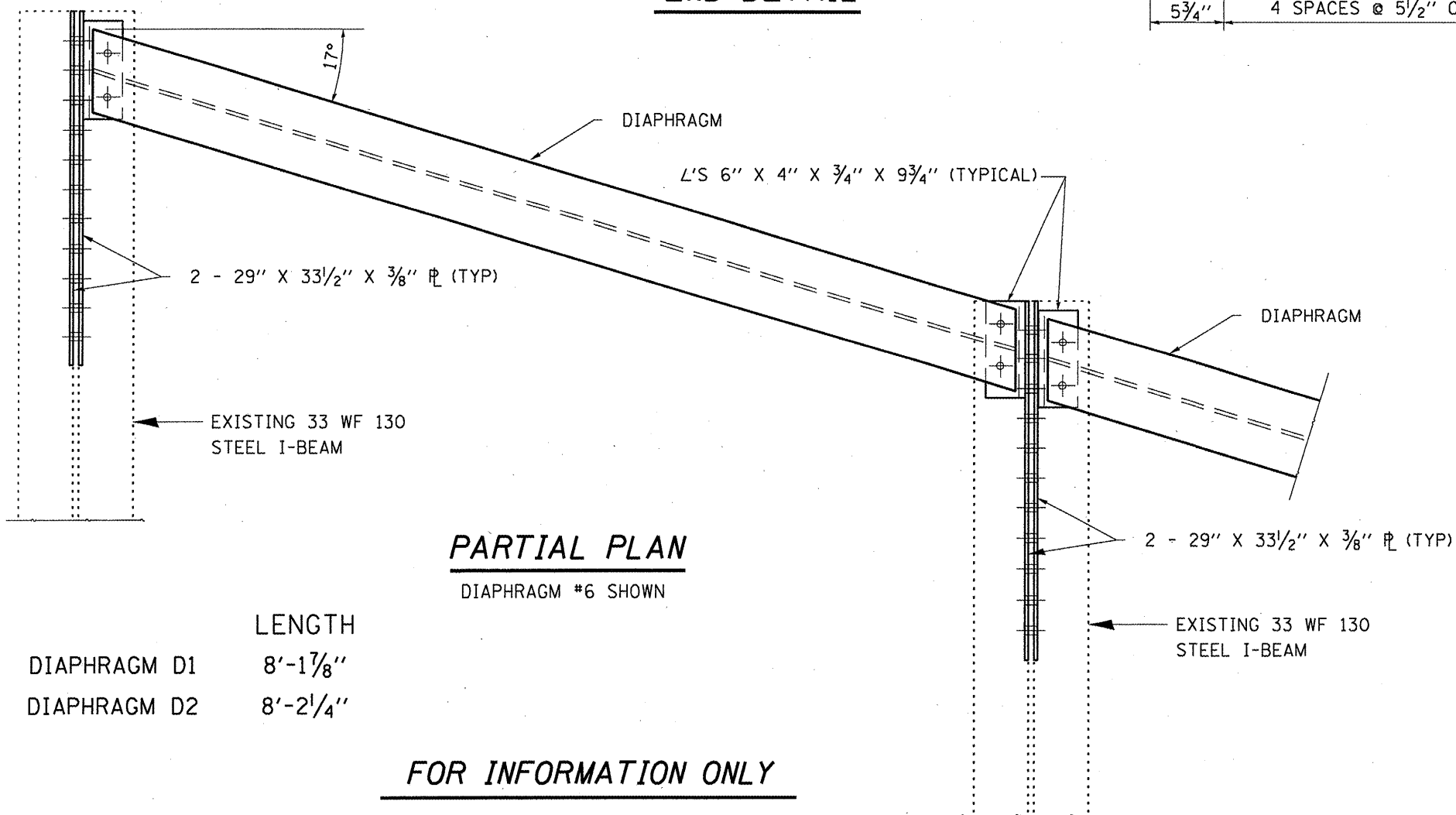
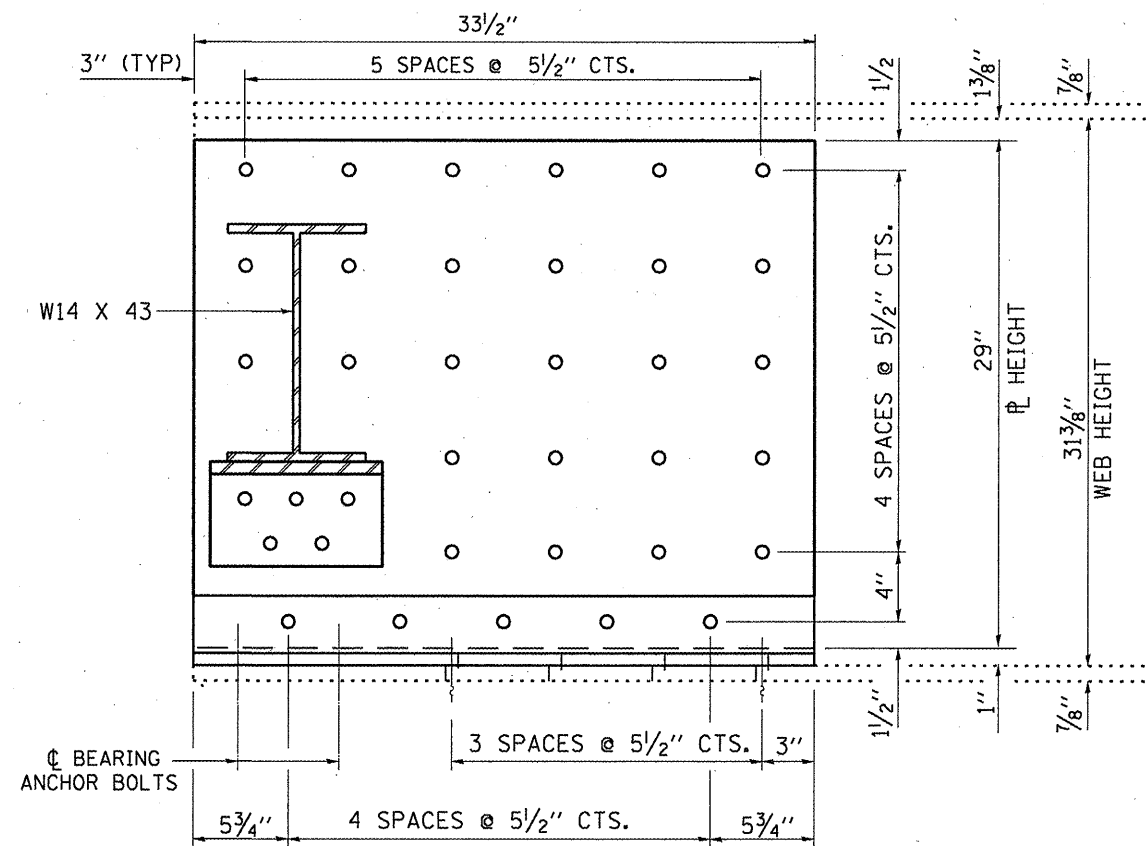
FILE NAME =	USER NAME = pateluj	DESIGNED - YOGESH PATEL	REVISED -	STATE OF ILLINOIS DEPARTMENT OF TRANSPORTATION	EXISTING STRUCTURE PLANS	F.A.P. RTE.	SECTION	COUNTY	TOTAL SHEETS	SHEET NO.	
ci:\pwwork\pwwork\pateluj\d0257915\0366631-shr-cover.dgn		DRAWN - YOGESH PATEL	REVISED -			846	(6B-1)BP	GRUNDY	11	10	
PLOT SCALE = 100.0119' / IN.		CHECKED - RON WOODSHANK	REVISED -			CONTRACT NO. 66B31					
PLOT DATE = Apr 07, 2011 - 09:58:18 AM		DATE -	REVISED -			ILLINOIS					



PARTIAL ELEVATION



END DETAIL



PARTIAL PLAN

DIAPHRAGM #6 SHOWN

	LENGTH
DIAPHRAGM D1	8'-1 7/8"
DIAPHRAGM D2	8'-2 1/4"

FOR INFORMATION ONLY

STRUCTURAL STEEL DETAILS
FAP ROUTE 846
(IL 53)
SECTION (6B-1)BP
GRUNDY COUNTY
S.N. 032-0023

FILE NAME =	USER NAME = potelyj	DESIGNED - YOGESH PATEL	REVISED -
ct:\pwork\pvidot\potelyj\0257915\0366631-shs-cover.dgn		DRAWN - YOGESH PATEL	REVISED -
		CHECKED - RON WOODSHANK	REVISED -
		DATE -	REVISED -

STATE OF ILLINOIS
DEPARTMENT OF TRANSPORTATION

EXISTING STRUCTURE PLANS
 SCALE: SHEET NO. 2 OF 2 SHEETS STA. TO STA.

F.A.P. RTE.	SECTION	COUNTY	TOTAL SHEETS	SHEET NO.
846	(6B-1)BP	GRUNDY	11	11
			CONTRACT NO. 66B31	
ILLINOIS				