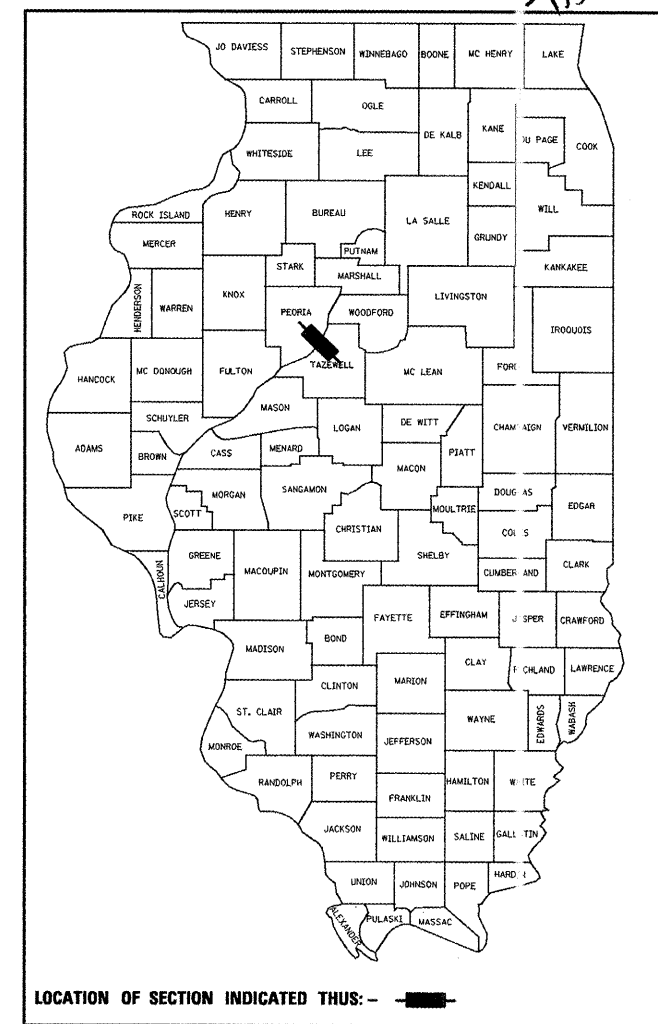


F.A.I. RTE.	SECTION	COUNTY	TOTAL SHEETS	SHEET NO.
474	[(72,90)5B]I-2	PEORIA / TAZEWELL	129	1
ILLINOIS CONTRACT NO. 68069				

D-94-055-00  
129  
135



**PROJECT DESCRIPTION:**  
DECK REPAIRS, DECK OVERLAY, BRIDGE JOINT REPAIRS AND METALIZING, MISCELLANEOUS STRUCTURE REPAIRS AND ELECTRICAL WORK TO STRUCTURE CARRYING I-474 (SHADE LOHMANN BRIDGE) OVER ILLINOIS RIVER (S.N. 090-0108 EB, 090-0109 WB) WEST OF CREVE COEUR

STATE OF ILLINOIS  
DEPARTMENT OF TRANSPORTATION  
DIVISION OF HIGHWAYS

SUBMITTED 2/10/2011  
Joseph E. Crow - 070  
DEPUTY DIRECTOR OF HIGHWAYS, REGION ENGINEER

May 13 2011  
Scott E. Stett P.E. /e  
acting ENGINEER OF DESIGN AND ENVIRONMENT

May 13 2011  
Christine M. Reed /e  
DIRECTOR OF HIGHWAYS, CHIEF ENGINEER

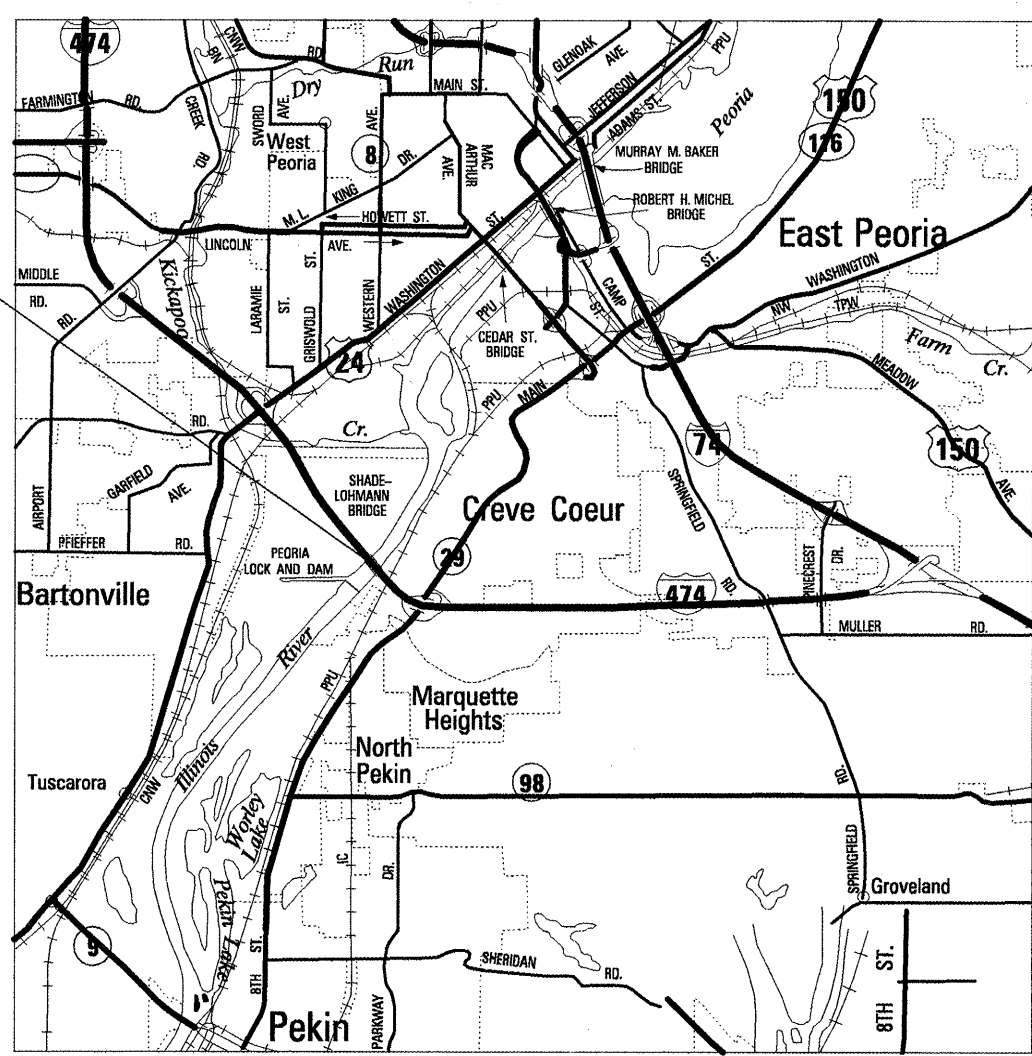
**PRINTED BY THE AUTHORITY  
OF THE STATE OF ILLINOIS**

STATE OF ILLINOIS  
DEPARTMENT OF TRANSPORTATION  
DIVISION OF HIGHWAYS

**PROPOSED  
HIGHWAY PLANS**

FAI 474 ROUTE I-474  
SECTION [(72,90)5B]I-2  
PROJECT IM-474-7(103)095  
TYPE of IMPROVEMENT: BRIDGE REPAIR  
PEORIA / TAZEWELL COUNTY

C-94-064-11



GROSS LENGTH = 10,010 FT. = 1.896 MILE  
NET LENGTH = 3,467 FT. = 0.66 MILE

INDEX OF SHEETS

- 1 COVER SHEET
- 2 COMMITMENTS & GENERAL NOTES
- 3-8 SUMMARY OF QUANTITIES
- 9-10 TYPICAL SECTIONS
- 11-17 SCHEDULE OF QUANTITIES
- 18 LINE DIAGRAM, ALLIGNMENT, TIES AND BENCH MARKS
- 19-22 PLAN / PROFILE SHEETS
- 23-34 MAINTENANCE OF TRAFFIC
- 35-93 STRUCTURE PLANS
- 94-115 ELECTRICAL PLANS
- 116-125 CROSS SECTION
- 126-129 DISTRICT STANDARDS

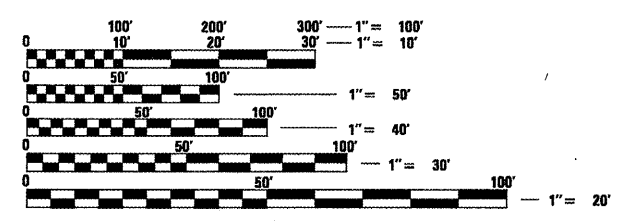
HIGHWAY STANDARDS

000001-06	701201-04
280061-05	701400-05
482006-03	701401-06
542401-01	701411-07
635006-03	701416-06
635011-02	701426-04
642001-01	701901-01
701101-02	704001-06
701106-02	781001-03

CADD STANDARDS

280001-D4
281001-D4
780001-D4

ADT = 15,599  
MU = 1,638  
SU = 702



FULL SIZE PLANS HAVE BEEN PREPARED USING STANDARD ENGINEERING SCALES. REDUCED SIZED PLANS WILL NOT CONFORM TO STANDARD SCALES. IN MAKING MEASUREMENTS ON REDUCED PLANS, THE ABOVE SCALES MAY BE USED.

J.U.L.I.E.  
JOINT UTILITY LOCATION INFORMATION FOR EXCAVATION  
1-800-892-0123  
OR 811

PROJECT ENGINEER: CHRISTOPHER MAUSHARD (309) 671-3453  
PROJECT MANAGER: SOBHI LABABIDI (309) 671-3460

CONTRACT NO. 68069  
CATALOG NO. 032243-00D

PROJECT BEGINS STA 428+11  
PROJECT ENDS STA. 135+00

STATION EQUATION:  
STA 449+28.26 BK =  
STA 56+06.88 AH

SN # 090-0108 EB  
SN # 090-0109 WB