

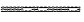






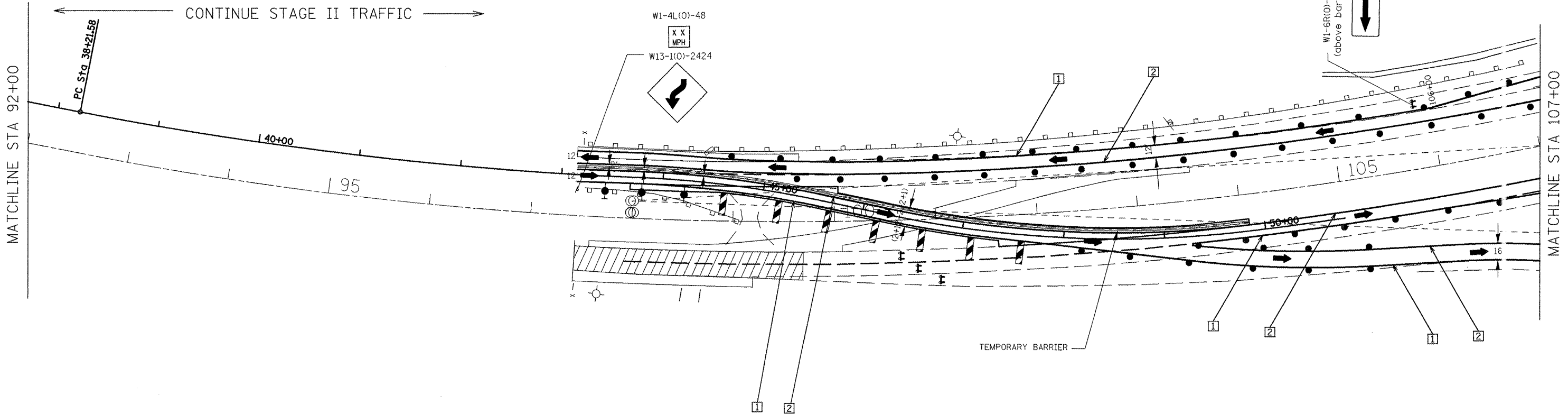


LEGEND

-  WORK AREA
-  TYPE III BARRICADE WITH FLASHING LIGHTS
-  TEMPORARY CONCRETE BARRIER
-  DRUM WITH STEADY BURN MONODIRECTIONAL LIGHT
-  DIRECTION INDICATOR BARRICADE WITH STEADY BURN MONODIRECTIONAL LIGHT
-  TYPE II BARRICADE WITH STEADY BURN MONODIRECTIONAL LIGHT
-  SIGN
-  VERTICAL PANEL (BACK TO BACK)
-  ARROW BOARD



TEMPORARY PAVEMENT MARKING LEGEND

- 1 PAVEMENT MARKING TAPE, TYPE III - LINE 4" (SOLID WHITE)
- 2 PAVEMENT MARKING TAPE, TYPE III - LINE 4" (SOLID YELLOW)

FILE NAME = Stage II sheets East & West.dgn	USER NAME = lalobidism	DESIGNED -	REVISED -
		DRAWN -	REVISED -
	PLOT SCALE = 100.0000' / IN.	CHECKED -	REVISED -
	PLOT DATE = 2/9/2011	DATE -	REVISED -

**STATE OF ILLINOIS
DEPARTMENT OF TRANSPORTATION**

MAINTENANCE OF TRAFFIC PLAN STAGE II			
SCALE:	SHEET NO. OF SHEETS	STA. TO STA.	

F.A.I. RTE. 474	SECTION (72, 90)5B)I-2	COUNTY PEO-TAZ	TOTAL SHEETS 129	SHEET NO. 31
CONTRACT NO. 68069			ILLINOIS FED. AID PROJECT	