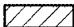
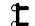







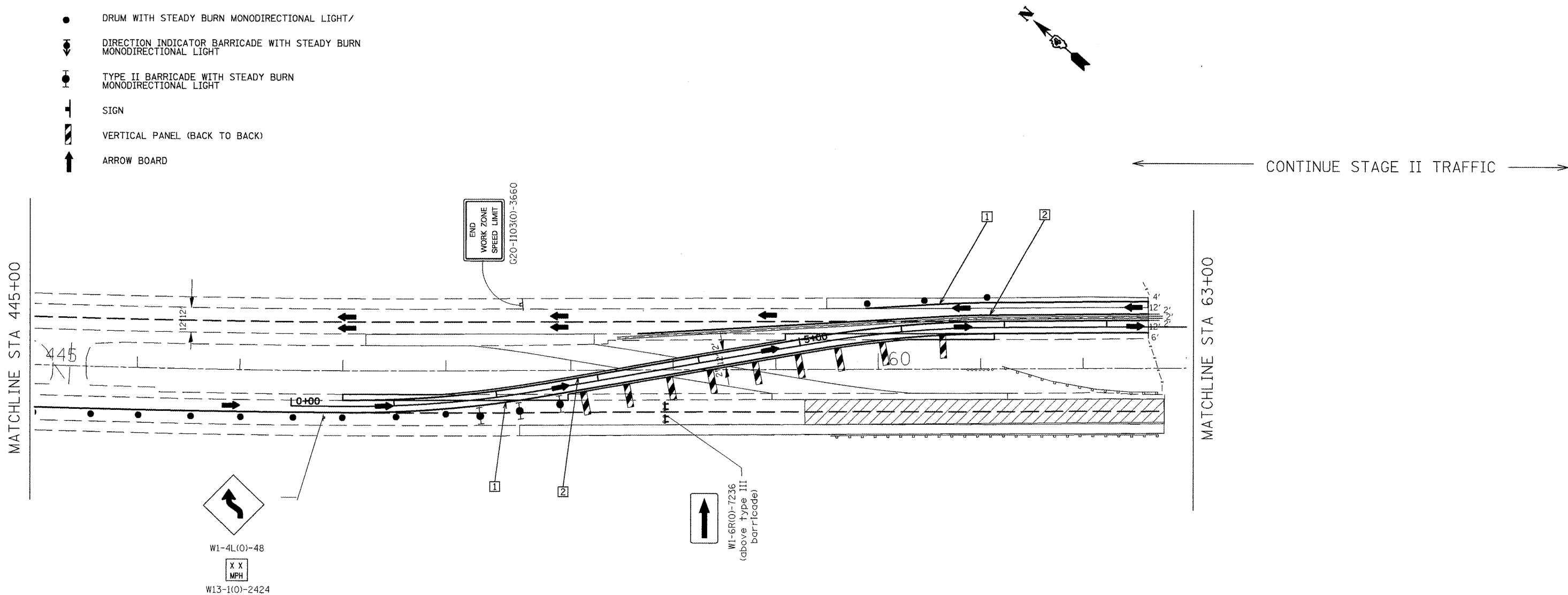


LEGEND

-  WORK AREA
-  TYPE III BARRICADE WITH FLASHING LIGHTS
-  TEMPORARY CONCRETE BARRIER
-  DRUM WITH STEADY BURN MONODIRECTIONAL LIGHT
-  DIRECTION INDICATOR BARRICADE WITH STEADY BURN MONODIRECTIONAL LIGHT
-  TYPE II BARRICADE WITH STEADY BURN MONODIRECTIONAL LIGHT
-  SIGN
-  VERTICAL PANEL (BACK TO BACK)
-  ARROW BOARD



TEMPORARY PAVEMENT MARKING LEGEND

- 1** PAVEMENT MARKING TAPE, TYPE III - LINE 4" (SOLID WHITE)
- 2** PAVEMENT MARKING TAPE, TYPE III - LINE 4" (SOLID YELLOW)

FILE NAME = Stage II sheets East & West.dgn

USER NAME = lababidism
 DESIGNED -
 DRAWN -
 CHECKED -
 DATE -
 PLOT SCALE = 100.0000" / IN.
 PLOT DATE = 2/9/2011

DESIGNED -
 DRAWN -
 CHECKED -
 DATE -
 REVISED -
 REVISED -
 REVISED -
 REVISED -

**STATE OF ILLINOIS
 DEPARTMENT OF TRANSPORTATION**

MAINTENANCE OF TRAFFIC PLAN STAGE II

SCALE: SHEET NO. OF SHEETS STA. TO STA.

F.A.I. RTE. 474	SECTION ((72, 90)5B)1-2	COUNTY PEO- AZ	TOTAL SHEETS 129	SHEET NO. 32
CONTRACT NO. 68069				
ILLINOIS FED. AID PROJECT				