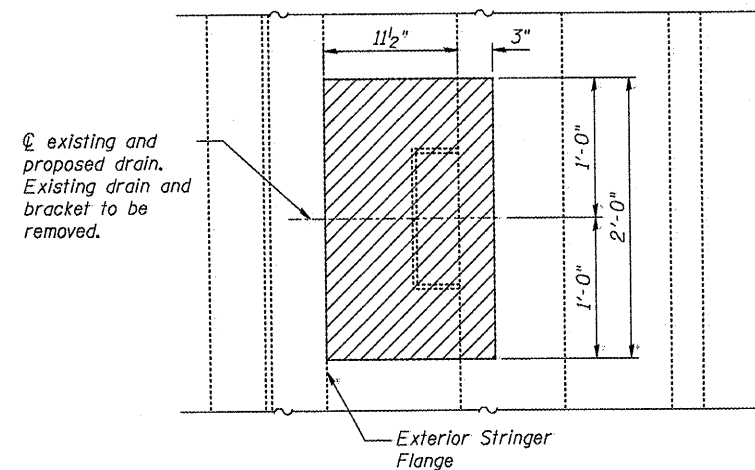


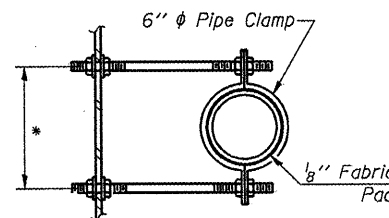
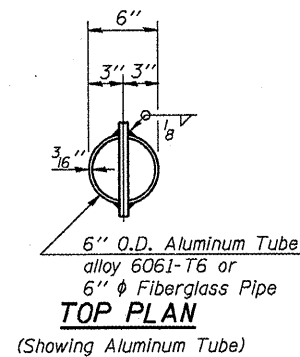
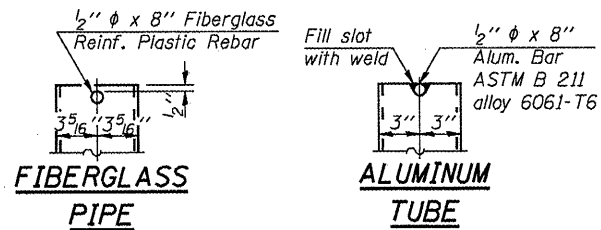
TRUSS DRAIN REPLACEMENT DETAIL

Concrete removal and replacement shall be paid for as DECK SLAB REPAIR (FULL DEPTH, TYPE I).



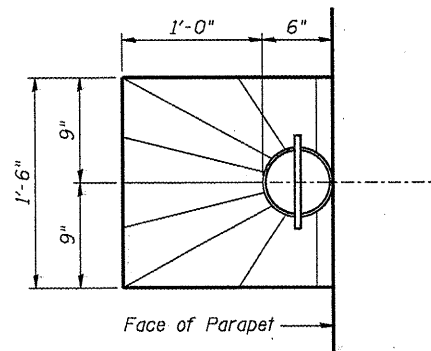
CONCRETE REMOVAL LIMITS

Hatched areas indicate concrete section to be removed and replaced. Perimeters of concrete removal areas shall be saw cut 3/4 inch prior to removal of concrete. Existing reinforcing shall remain.



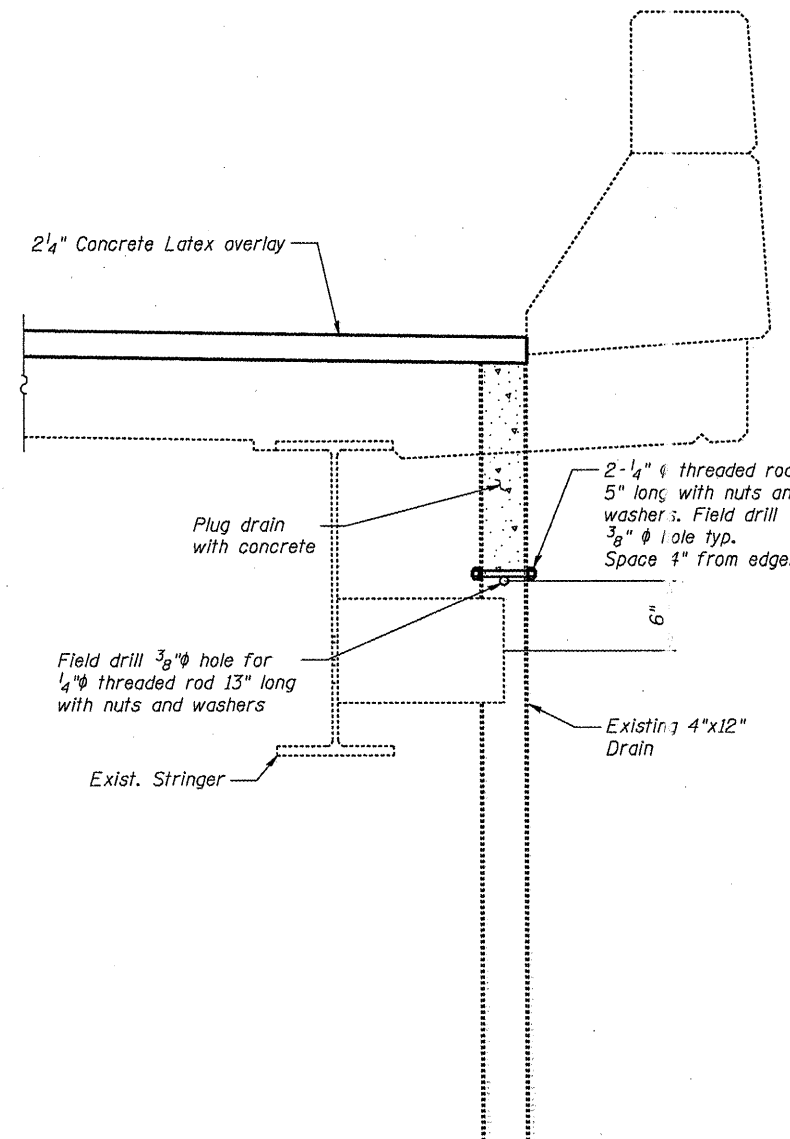
SECTION A-A

* Dimension as required by Pipe Clamp



TOP PLAN

Overlay sloping



TRUSS DRAIN ELIMINATION DETAIL

Threaded rod, nuts, washers, and concrete shall be paid for as PLUG EXISTING DECK DRAINS.

Notes:

- Drains shall be located clear of all diaphragms.
- The exterior surfaces of the floor drains shall be painted with the finish coat as specified in the special provisions for Cleaning and Painting New Metal Structures. The exterior surfaces of the drains shall be cleaned according to Steel Structures Painting Council's Spec. SSPC-SP1 prior to painting.
- Fiberglass pipe shall conform to ASTM D 2996, with short-time rupture strength hoop tensile stress of 30,000 p.s.i. minimum.
- Galvanize clamping device according to AASHTO M232. Cost of clamping device and galvanizing included with Floor Drains.

FILE NAME =	USER NAME =	DESIGNED - BTO	REVISED -
		CHECKED - JAN	REVISED -
		DRAWN - BTO	REVISED -
		CHECKED - JAN	REVISED -

STATE OF ILLINOIS
DEPARTMENT OF TRANSPORTATION

TRUSS DECK DRAIN REPAIR DETAILS
STRUCTURE NO. 090-0108 & 090-0109

SHEET NO. 28 OF 65 SHEETS

F.A.I. RTE.	SECTION	COUNT	TOTAL SHEETS	SHEET NO.
474		PEORIA & TAZEWELL	129	62
				CONTRACT NO. 68069
ILLINOIS FED. AID PROJECT				