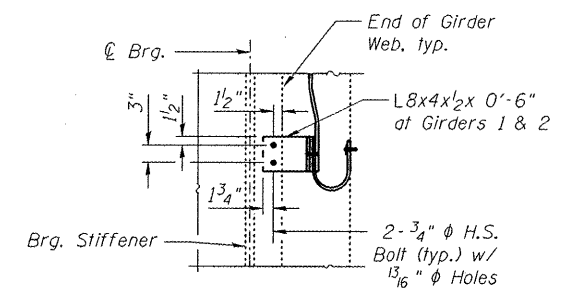
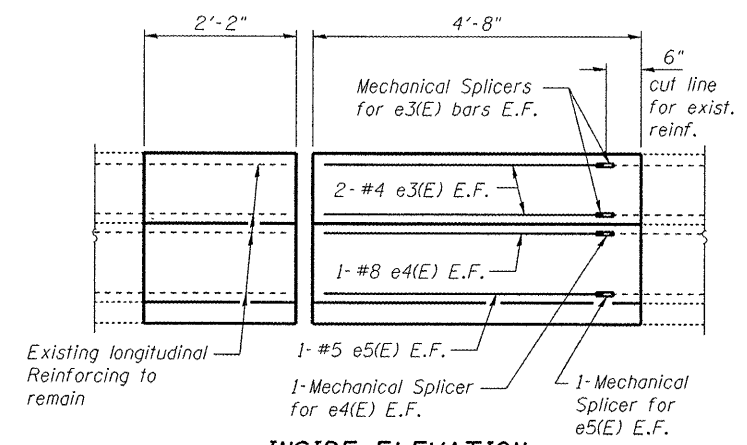


**VIEW C-C**  
Similar view at North end.



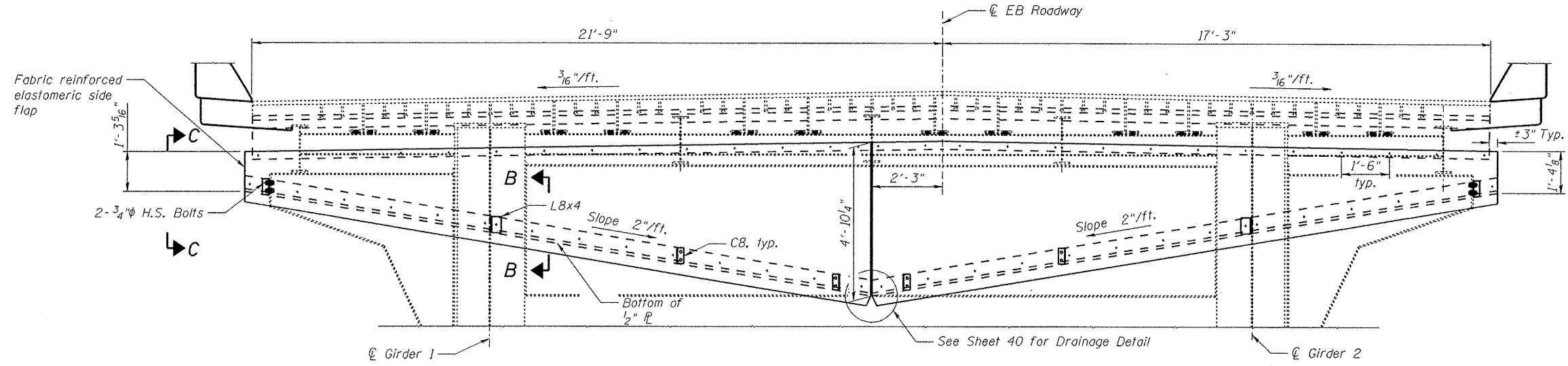
**SECTION B-B**



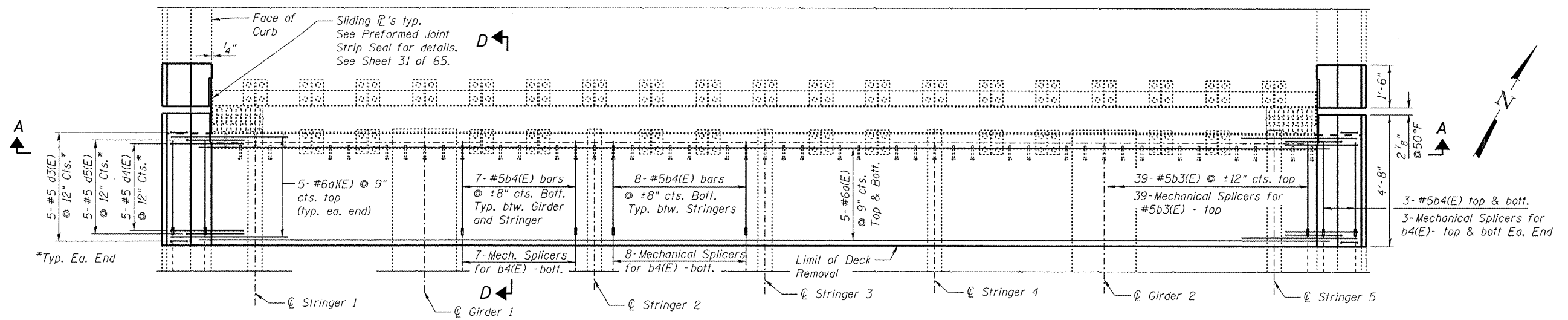
**INSIDE ELEVATION OF PARAPET**

**FINGER PLATE TROUGH INSTALLATION PROCEDURE**

- 1) Perimeter of concrete removal area shall be saw cut 3/4" prior to removal.
- 2) Remove Concrete Deck and parapet as shown. During concrete removal, care shall be taken to avoid damage to the existing finger plate, studs, stools, diaphragms, and stringers. Any part of the Finger plate assembly damaged during removal shall be replaced at the Contractor's expense to the satisfaction of the Engineer.
- 3) After the concrete deck is removed, the finger plate and stools shall be removed in one piece and cleaned.
- 4) Clean and prep the existing angle edge and stool web. Weld new 1/2" trough plate per detail.
- 5) Prior to re-installation of the finger plate assembly, the Girder bearings shall be removed and replaced.
- 6) Install trough support channels and angles to match the slope shown.
- 7) Reinstall Finger plate assembly with new shims and bolts. Adjust stools to account for any temperature variation from 50°F.
- 8) Install trough to match slope shown. Install trough drainage system.



**SECTION A-A**  
(Looking West)



**WEST ABUTMENT FINGER PLATE EXPANSION JOINT PLAN**

FILE NAME =	USER NAME =	DESIGNED - BTO	REVISED -	<b>STATE OF ILLINOIS DEPARTMENT OF TRANSPORTATION</b>	<b>WEST ABUTMENT FINGER PLATE TROUGH, EB STRUCTURE NO. 090-0108</b>	F.A.I. RTE. 474	SECTION	COUNTY	TOTAL SHEETS NO.
PLOT SCALE =	CHECKED - JAN	REVISED -	PEORIA & TALLEWELL			12969			
PLOT DATE =	DRAWN - BTO	REVISED -	CONTRACT NO. 68069						
	CHECKED - JAN	REVISED -	ILLINOIS FED. AID PROJ. 1						