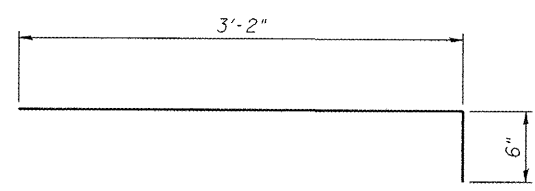


REMOVAL SECTION



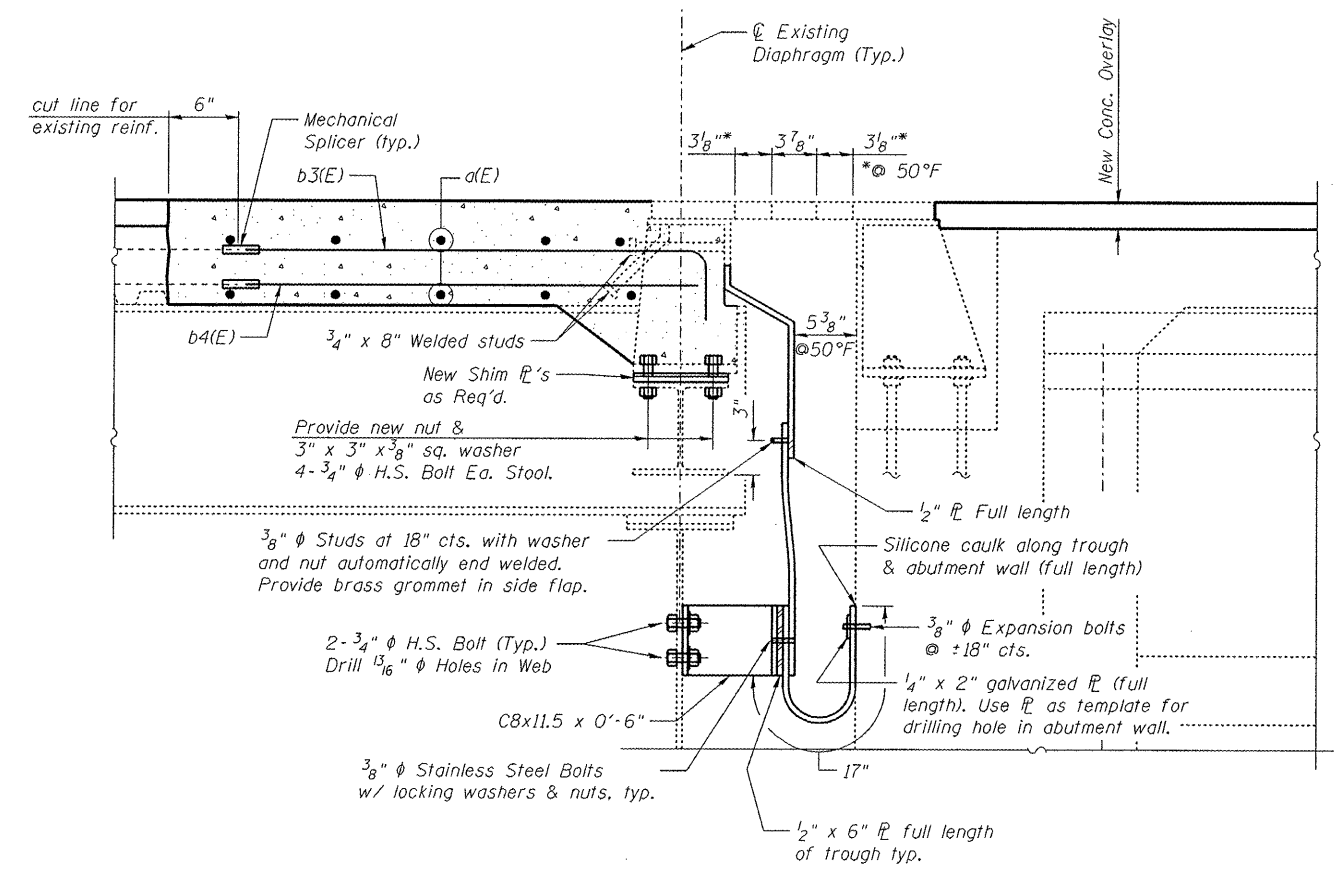
BAR b3(E)

Notes:
See Sht. 39 of 65 for parapet cross section and parapet bar details.
Existing Reinforcement Bars to remain in removal area shall be cleaned and incorporated into new construction.
Cost included with CONCRETE REMOVAL.

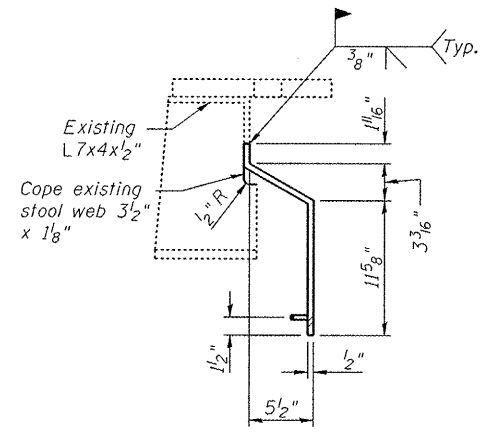
BILL OF MATERIAL

Bar	No.	Size	Length	Shape
a(E)	10	#6	41'-0"	—
a1(E)	10	#6	4'-0"	—
b3(E)	39	#5	3'-8"	—
b4(E)	64	#5	3'-2"	—
d3(E)	10	#5	2'-1"	┌
d4(E)	10	#5	5'-2"	└
d5(E)	10	#5	3'-7"	└
e3(E)	8	#4	3'-11"	—
e4(E)	4	#8	3'-11"	—
e5(E)	4	#5	3'-11"	—
Concrete Removal		Cu. Yd.	.6	
Concrete Superstructure		Cu. Yd.	1.7	
Reinforcement Bars, Epoxy Coated		Pound	1,230	
Mechanical Splicers		Each	9	
Fabric Reinforced Elastomeric Trough**		Foot	33.5	
Remove and Reinstall Finger Plate Joint		Each	1	

**All structural steel for connections, trough plates & shims, sliding plates, welding and studs and all high strength bolts shall be covered in this cost, which shall include all materials, equipment, labor, and installation.



SECTION D-D



TROUGH PL DETAIL