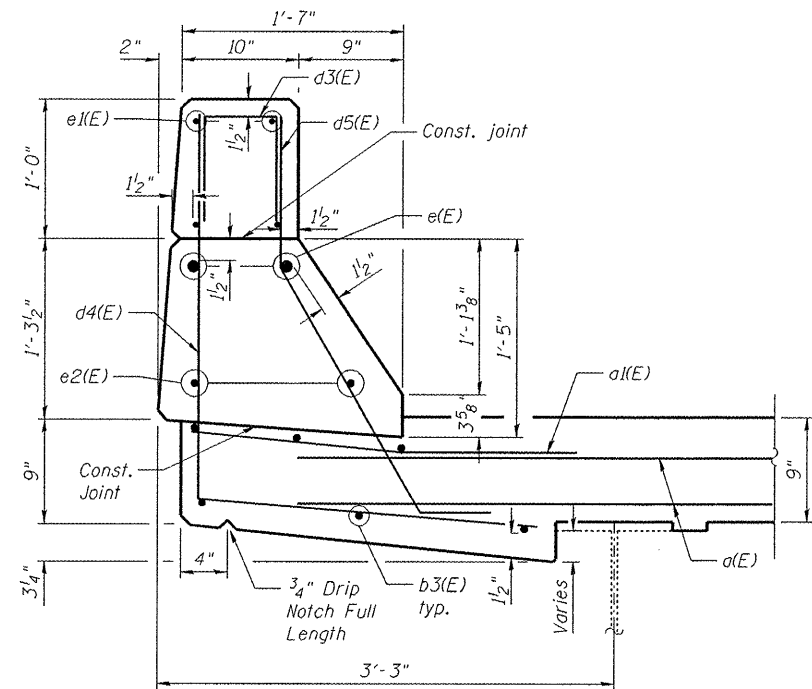
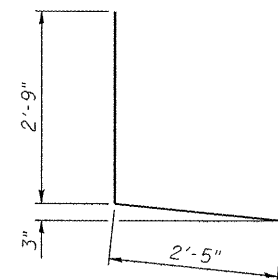
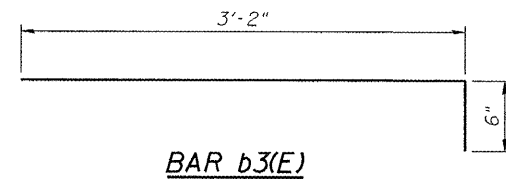


INSIDE ELEVATION OF PARAPET

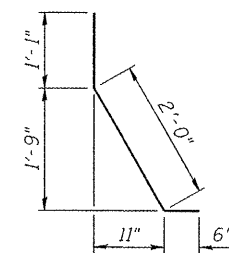
Note:
For railpost treatment at concrete removal locations, see sheet 48.



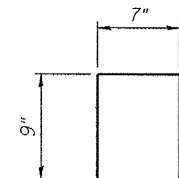
APPROACH SPANS PARAPET RECONSTRUCTION DETAIL



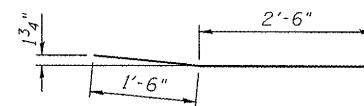
BAR d4(E)



BAR d5(E)



BAR d3(E)



BAR a1(E)

BILL OF MATERIAL

(for 1 Location)

Bar	No.	Size	Length	Shape
d(E)	20	#6	41'-0"	—
a1(E)	20	#6	4'-0"	—
b3(E)	78	#5	3'-8"	—
b4(E)	128	#5	3'-2"	—
d3(E)	20	#5	2'-1"	┌
d4(E)	20	#5	5'-2"	┌
d5(E)	20	#5	3'-7"	┌
e(E)	8	#8	3'-9"	—
e1(E)	16	#4	3'-9"	—
e2(E)	8	#5	3'-9"	—
Concrete Removal			Cu. Yd.	2.1
Concrete Superstructure			Cu. Yd.	1.7
Reinforcement Bars, Epoxy Coated			Pound	2,450
Mechanical Splicers			Each	98
Fabric Reinforced Elastomeric Trough*			Foot	39.5
Remove and Reinstall Finger Plate Joint			Each	1

*All structural steel for connections, trough plates & shims, sliding plates, welding and studs and all high strength bolts shall be covered in this cost, which shall include all materials, equipment, labor, and installation.

FILE NAME *	USER NAME *	DESIGNED - RAB	REVISED -
		CHECKED - BTO	REVISED -
PLOT SCALE *		DRAWN - RAB	REVISED -
PLOT DATE *		CHECKED - BTO	REVISED -

**STATE OF ILLINOIS
DEPARTMENT OF TRANSPORTATION**

**PIER 4 BILL OF MATERIAL AND APPROACH PARAPET DETAIL
STRUCTURE NO. 090-0108 & 090-0109**

SHEET NO. 39 OF 65 SHEETS

F.A.I. RTE.	SECTION	COUNT	TOTAL SHEETS	SHEET NO.
474		PEORIA & TALEWELL	109	73
			CONTRACT NO. 68069	
ILLINOIS FED. AID PROJ. CT				