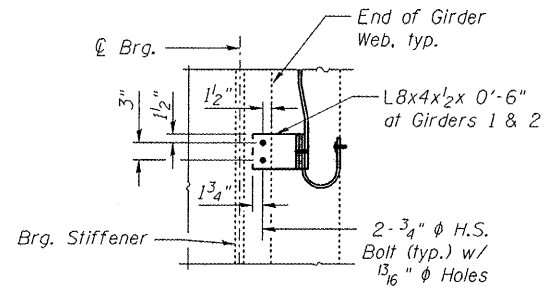
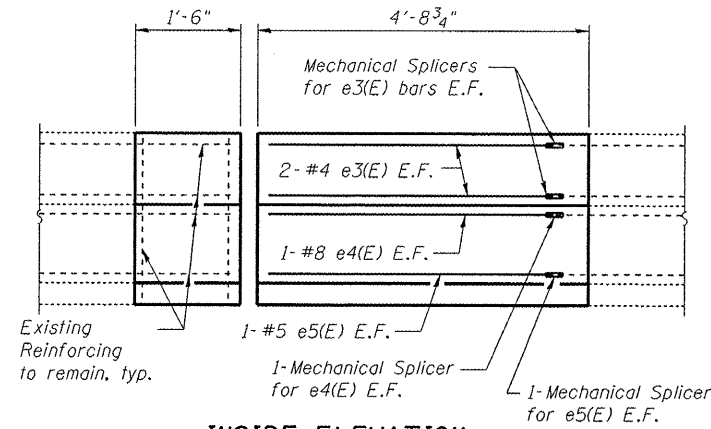


VIEW C-C

South end similar, use C7x9.8 x 0'-6".



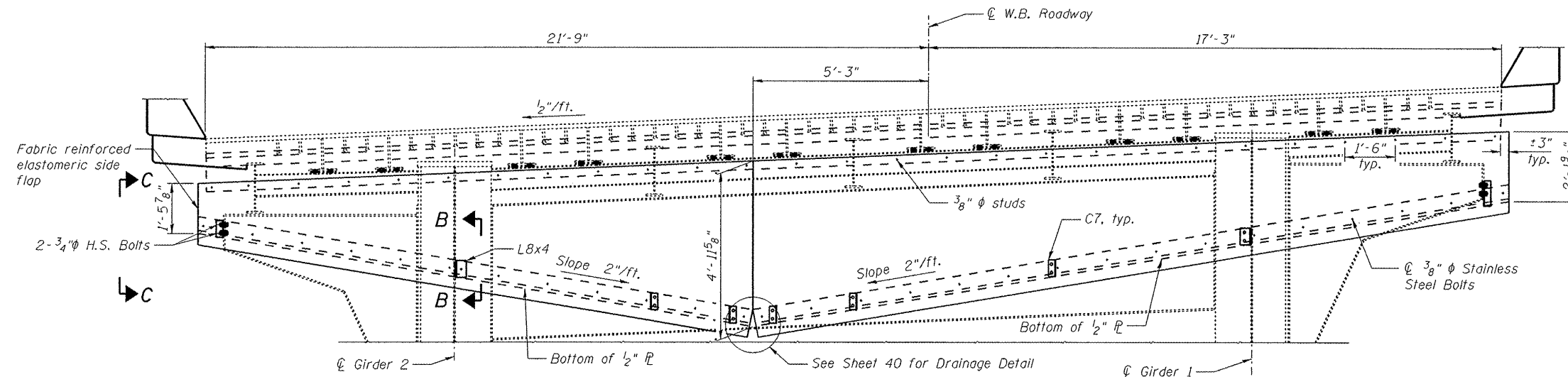
SECTION B-B



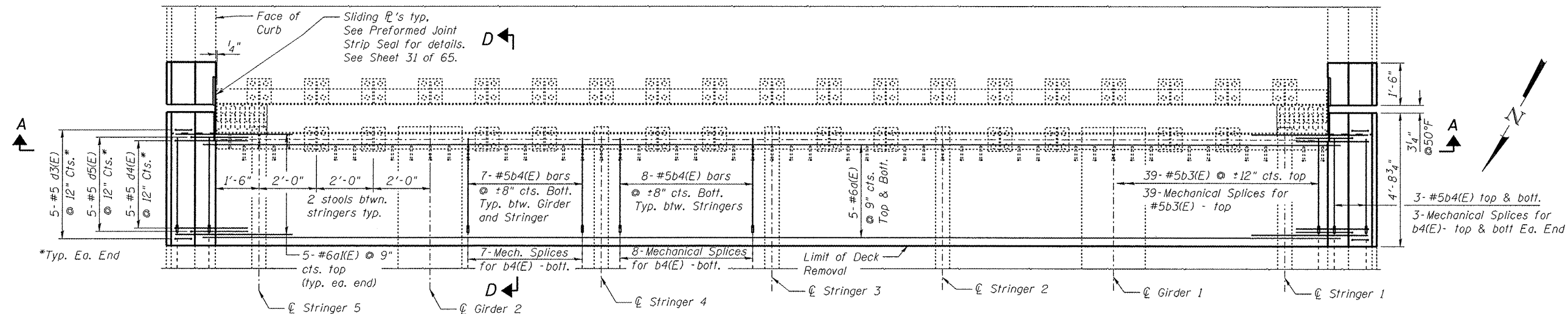
INSIDE ELEVATION OF PARAPET

FINGER PLATE TROUGH INSTALLATION PROCEDURE

- 1) Perimeter of concrete removal area shall be saw cut 3/4" prior to removal.
- 2) Remove Concrete Deck and parapet as shown. During concrete removal, care shall be taken to avoid damage to the existing finger plate, studs, stools, diaphragms, and stringers. Any part of the Finger Plate assembly damaged during removal shall be replaced at the Contractor's expense to the satisfaction of the Engineer.
- 3) After the concrete deck is removed, the finger plate and stools shall be removed and cleaned.
- 4) Clean and prep the existing angle edge and girder web. Weld new 1/2" trough plate per detail.
- 5) Prior to re-installation of the finger plate assembly, the Girder bearings shall be removed and replaced.
- 6) Install trough support channels and angles to match the slope shown.
- 7) Reinstall Finger Plate assembly with new shims and bolts. Adjust stools to account for any temperature variation from 50°F.
- 8) Install trough to match slope shown.



SECTION A-A (Looking East)



EAST ABUTMENT FINGER PLATE EXPANSION JOINT PLAN

FILE NAME :	USER NAME :	DESIGNED - BTO	REVISED -	STATE OF ILLINOIS DEPARTMENT OF TRANSPORTATION	EAST ABUTMENT FINGER PLATE TROUGH, WB STRUCTURE NO. 090-0109	F.A.I. RTE. 474	SECTION	COUNT	TOTAL SHEETS	SHEET NO.
PLOT SCALE :	DRAWN - BTO	REVISED -	PEORIA & TAYLOR			229	77			
PLOT DATE :	CHECKED - JAN	REVISED -	CONTRACT NO. 68069							
	CHECKED - JAN	REVISED -	ILLINOIS FED. AID PROJECT							