

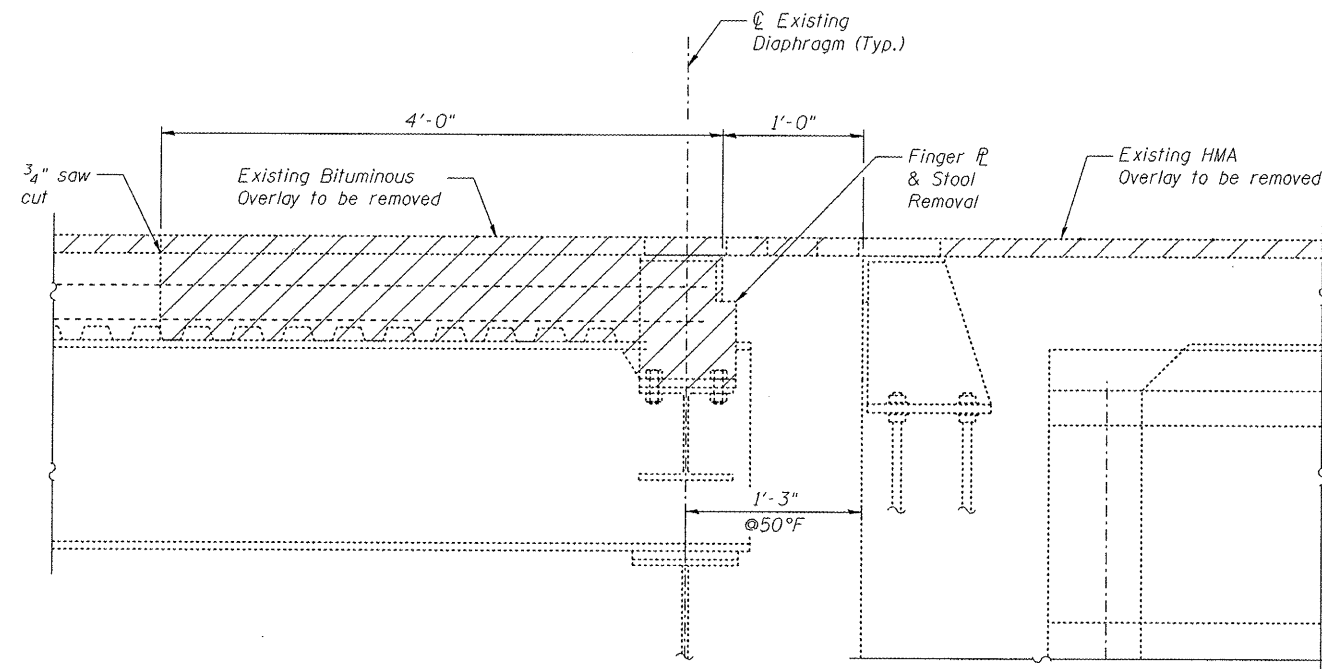
BILL OF MATERIAL

Bar	No.	Size	Length	Shape
a(E)	10	#6	41'-0"	—
a(E)	10	#6	4'-0"	—
b3(E)	39	#5	3'-8"	—
b4(E)	64	#5	3'-2"	—
d3(E)	10	#5	2'-1"	┌
d4(E)	10	#5	5'-2"	└
d5(E)	10	#5	3'-7"	└
e3(E)	8	#4	3'-11"	—
e4(E)	4	#8	3'-11"	—
e5(E)	4	#5	3'-11"	—
Concrete Removal			Cu. Yd.	5.6
Concrete Superstructure			Cu. Yd.	6.7
Reinforcement Bars, Epoxy Coated			Pound	.230
Mechanical Splicers			Each	99
Fabric Reinforced Elastomeric Trough*			Foot	39.5
Remove and Reinstall Finger Plate Joint			Each	1

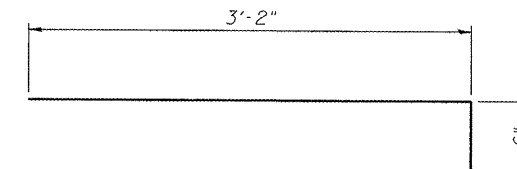
Notes:
See Sht. 39 of 65 for parapet cross section and parapet bar details.

Existing Reinforcement Bars to remain in removal area shall be cleaned and incorporated into new construction.
Cost included with CONCRETE REMOVAL.

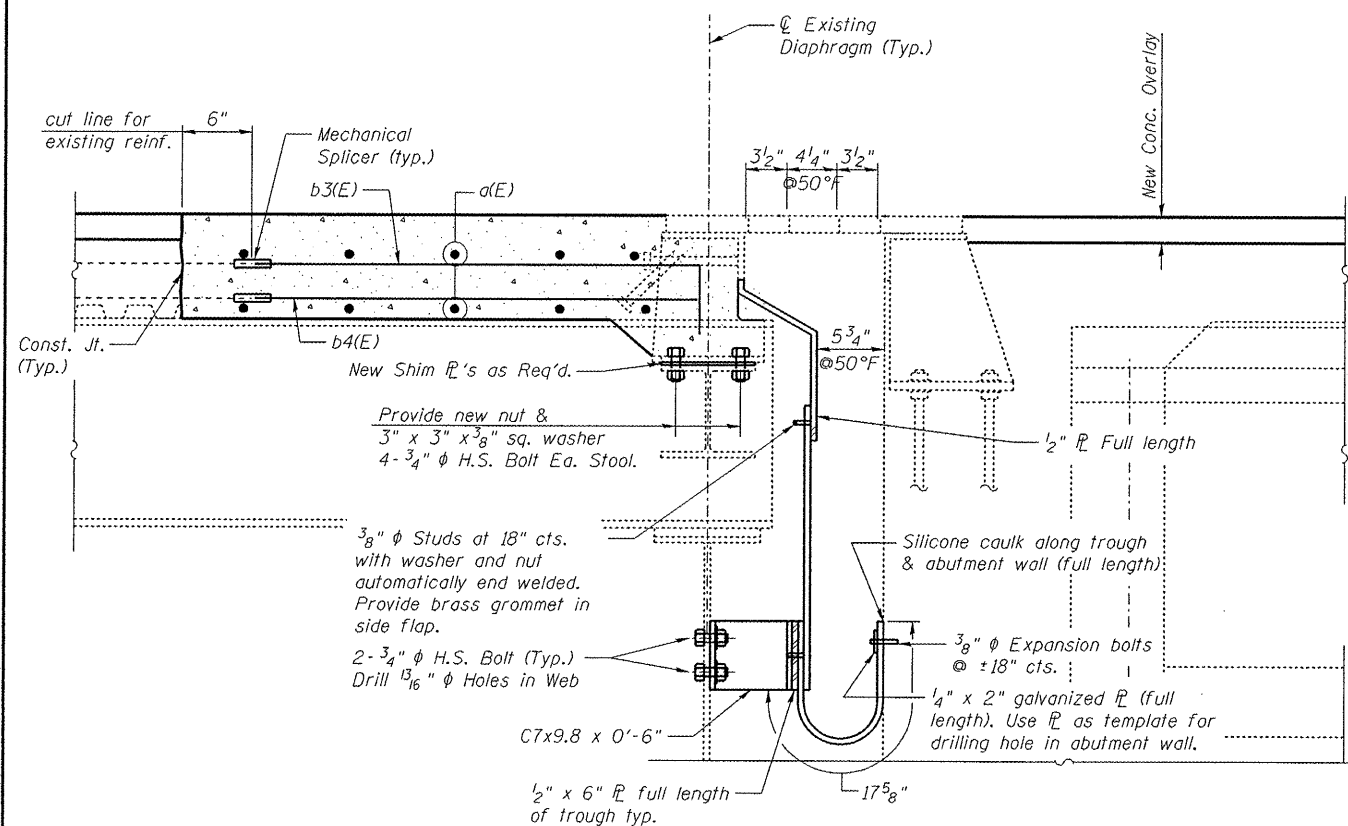
*All structural steel for connections, trough plates & shims, sliding plates, welding and studs and all high strength bolts shall be covered in this cost, which shall include all materials, equipment, labor, and installation.



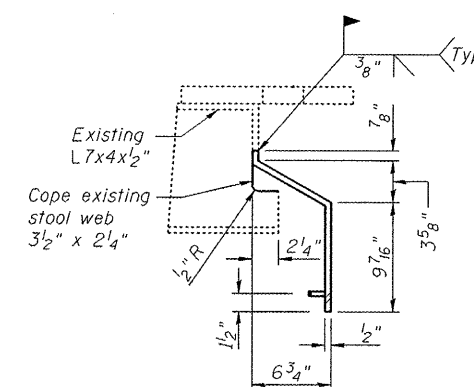
REMOVAL SECTION



BAR b3(E)



SECTION F-F



TROUGH PLATE DETAIL

FILE NAME *	USER NAME *	DESIGNED - BTO	REvised -	STATE OF ILLINOIS DEPARTMENT OF TRANSPORTATION	EAST ABUTMENT FINGER PLATE TROUGH DETAILS, WB STRUCTURE NO. 090-0109	F.A.I. R.T.E.	SECTION	COUNT	TOTAL SHEETS	SHEET NO.	
		CHECKED - JAN	REvised -			474		PEORIA & TA EWELL	229	28	
PLOT SCALE *		DRAWN - BTO	REvised -			CONTRACT NO. 68069					
PLOT DATE *		CHECKED - JAN	REvised -			ILLINOIS FED. AID PROJ. CT					