

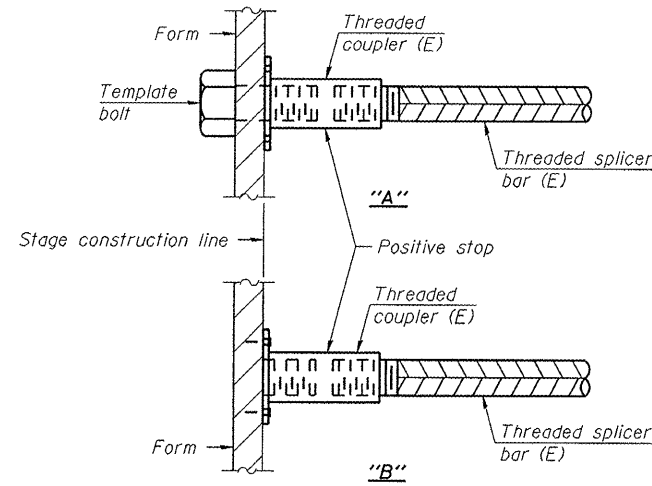
STANDARD BAR SPLICER ASSEMBLY

Minimum Lap Lengths					
Bar size to be spliced	Table 1	Table 2	Table 3	Table 4	Table 5
3, 4	1'-5"	1'-11"	2'-1"	2'-4"	2'-3"
5	1'-9"	2'-5"	2'-7"	2'-11"	2'-10"
6	2'-1"	2'-11"	3'-1"	3'-6"	3'-4"
7	2'-9"	3'-10"	4'-2"	4'-8"	4'-6"
8	3'-8"	5'-1"	5'-5"	6'-2"	5'-10"
9	4'-7"	6'-5"	6'-10"	7'-9"	7'-5"

- Table 1: Black bar, 0.8 Class C
- Table 2: Black bar, Top bar lap, 0.8 Class C
- Table 3: Epoxy bar, 0.8 Class C
- Table 4: Epoxy bar, Top bar lap, 0.8 Class C
- Table 5: Epoxy bar, Top bar lap, Class B

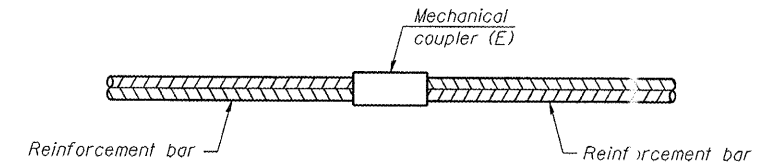
Threaded splicer bar length = min. lap length + 1 1/2" + thread length

* Epoxy not required on Bar Splicer Assembly components used in conjunction with black bars.



INSTALLATION AND SETTING METHODS

"A": Set bar splicer assembly by means of a template bolt.
 "B": Set bar splicer assembly by nailing to wood forms or cementing to steel forms.
 (E) : Indicates epoxy coating.



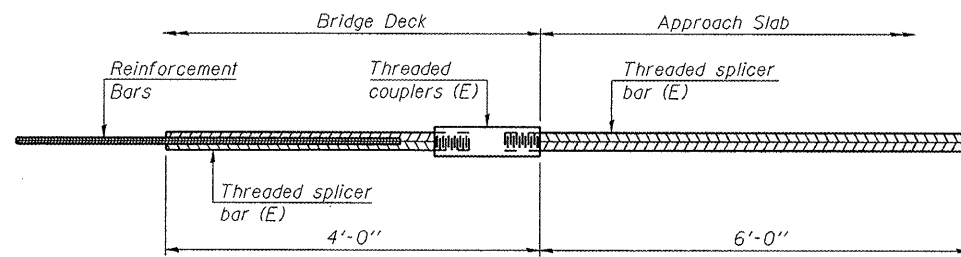
STANDARD MECHANICAL SPLICER

W.B. S.M. 090-0109

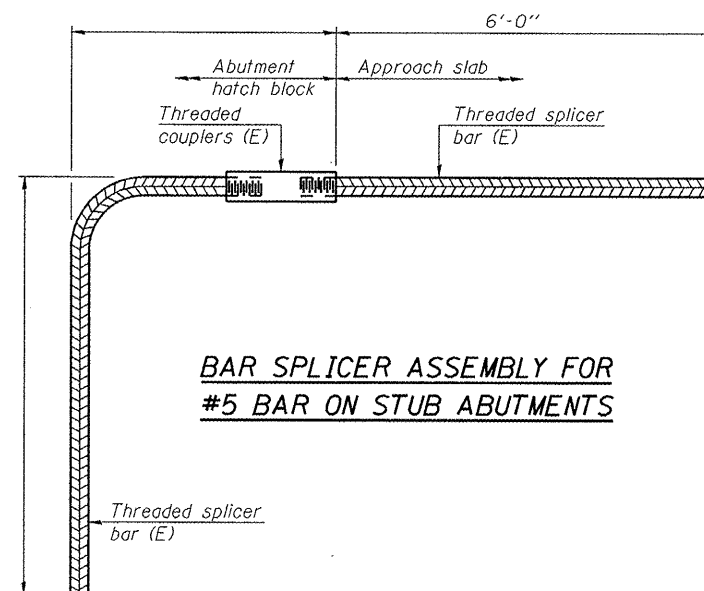
Location	Bar size	No. assemblies required
West Abutment, WB	#4	8
	#5	209
	#8	4
Pier 4, WB	#4	16
	#5	198
	#8	8
Pier 8, WB	#4	16
	#5	199
	#8	8
Pier 11, WB	#4	16
	#5	199
	#8	8
East Abutment, WB	#4	8
	#5	99
	#8	4

E.B. S.M. 090-0108

Location	Bar size	No. assemblies required
West Abutment, EB	#4	8
	#5	99
	#8	4
Pier 4, EB	#4	16
	#5	198
	#8	8
Pier 8, EB	#4	16
	#5	199
	#8	8
Pier 11, EB	#4	16
	#5	199
	#8	8
East Abutment, EB	#4	8
	#5	209
	#8	4



BAR SPLICER ASSEMBLY FOR #5 BAR ON INTEGRAL OR SEMI-INTEGRAL ABUTMENTS



BAR SPLICER ASSEMBLY FOR #5 BAR ON STUB ABUTMENTS

NOTES

Splicer bars shall be deformed with threaded ends and have a minimum 60 ksi yield strength.
 All reinforcement shall be lapped and tied to the splicer bars.
 Bar splicer assemblies shall be epoxy coated according to the requirements for reinforcement bars. See Section 508 of the Standard Specifications.
 See special provision for Mechanical Splicers.
 See approved list of bar splicer assemblies and mechanical splicers for alternatives.

BSD-1

7-1-10

FILE NAME =	USER NAME =	DESIGNED - BTO	REVISED -
		CHECKED - JAN	REVISED -
PLOT SCALE =		DRAWN - BTO	REVISED -
PLOT DATE =		CHECKED - JAN	REVISED -

**STATE OF ILLINOIS
DEPARTMENT OF TRANSPORTATION**

**MECHANICAL SPLICER DETAILS
STRUCTURE NO. 090-0108 & 090-0109**

SHEET NO. 49 OF 65 SHEETS

F.A.I. RTE. 474	SECTION	COUNT	TOTAL SHEETS NO.
		PEORIA & TA EWELL	121 83
			CONTRACT NO. 68069
ILLINOIS FED. AID PROJ. T			