

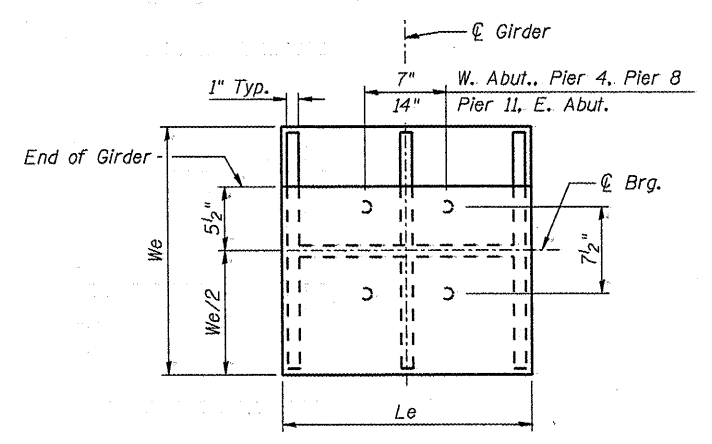
GIRDER REACTION TABLE

(From Existing Plans)

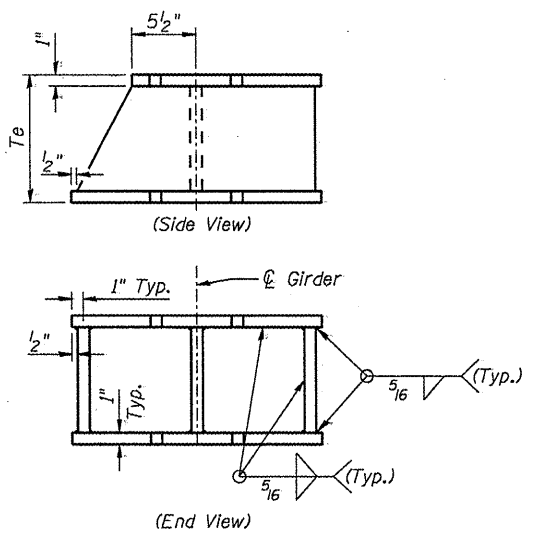
	W. Abut. Pier 4 Pier 8	Pier 11	E. Abut.
Dead Load (K)	277	258	219
Live Load (K)	137	125	111
Impact (K)	22	21	21
Total (K)	436	404	351
Minimum Jack Capacity (Tons)	220	205	180

Notes:
All structural steel of the bearing assembly shall conform to the requirements of AASHTO M 270 Grade 50.

EXISTING BEARING REMOVAL DETAIL



STEEL EXTENSION PLAN



STEEL EXTENSION ELEVATION