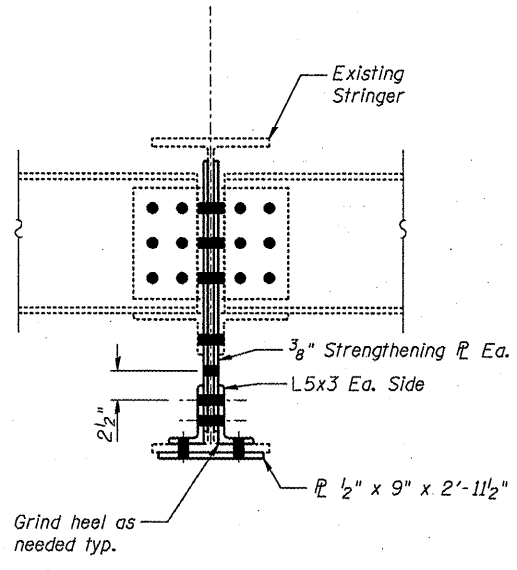


**SECTION D-D**

**DETAIL 3**

FB 1, Span 6 (S.N. 090-0109)  
 FB 1, Span 12 (S.N. 090-0108)



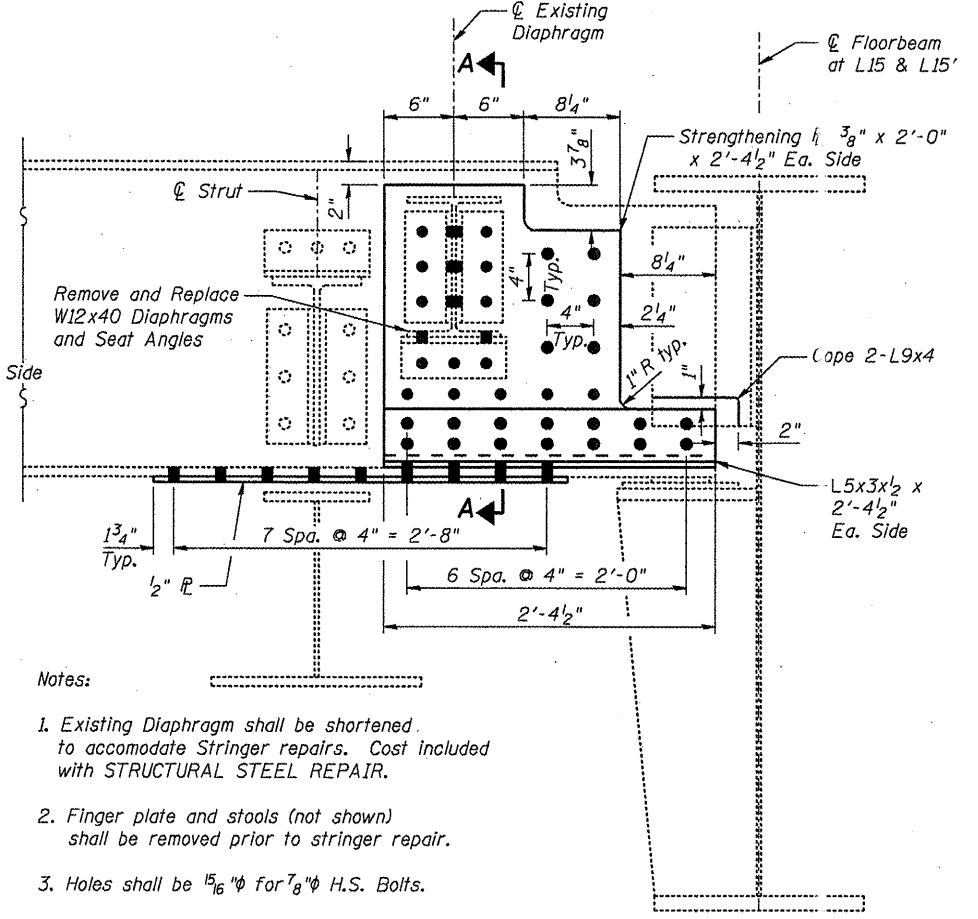
**SECTION A-A**

**TOP BENT PLATE**

Bent PL 3/8" x 6" x 5'-1 1/2"

**BOTTOM BENT PLATE**

Bent PL 3/8" x 2 1/2" x 5'-2"

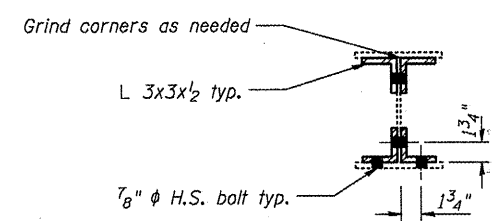


**Notes:**

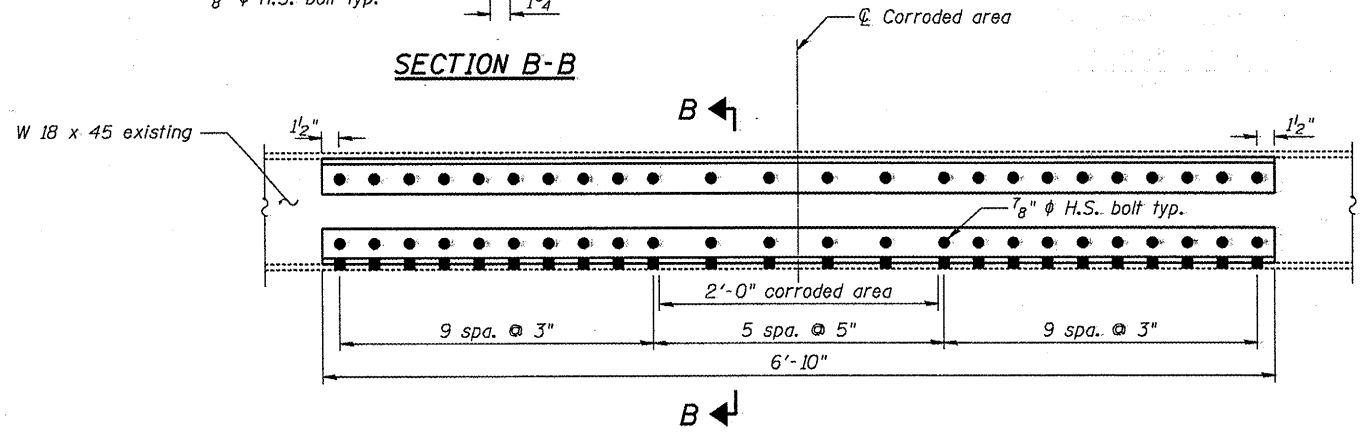
- Existing Diaphragm shall be shortened to accommodate Stringer repairs. Cost included with STRUCTURAL STEEL REPAIR.
- Finger plate and stools (not shown) shall be removed prior to stringer repair.
- Holes shall be 1 5/16" for 7/8" H.S. Bolts.

**DETAIL 1**

Span 10, Str.1, Str.2, Str.3, Str.4, & Str.5 @ FB15 (S.N. 090-0108)  
 Span 10, Str.1, Str.2, Str.3, Str.4, & Str.5 @ FB15' (S.N. 090-0108)

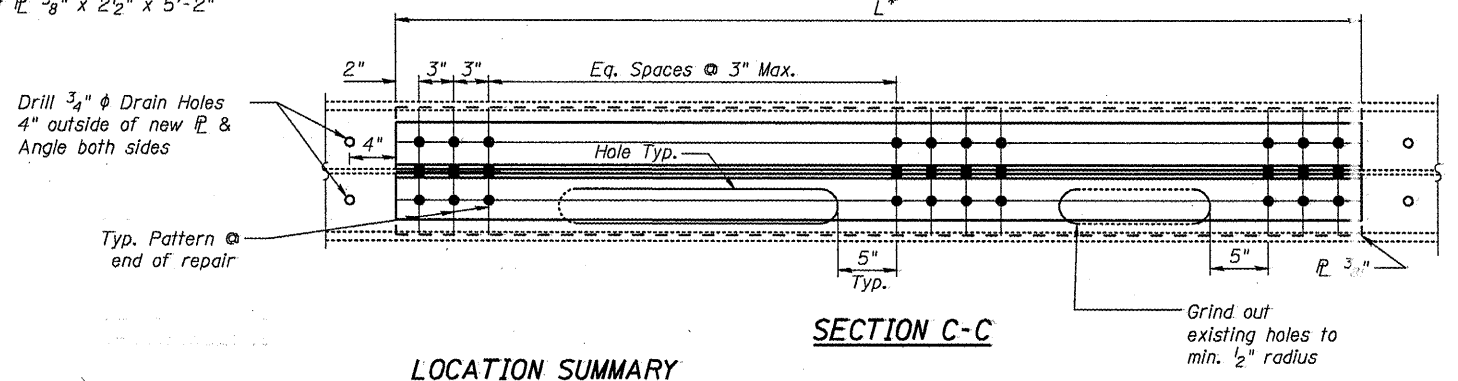


**SECTION B-B**



**DETAIL 4**

Str. 5 between FB. 3 & 4  
 Span 15  
 (S.N. 090-0108)

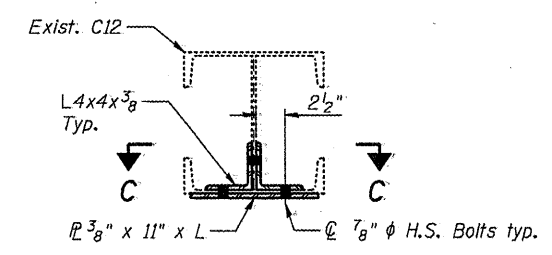


**SECTION C-C**

**LOCATION SUMMARY**

STRUCTURE	SPAN	MEMBER	L*
090-0109	Span 9	FB5S-Ctr. FB6	6'-11"
090-0109	Span 9	FB6S-Ctr. FB7	6'-11"
090-0109	Span 9	FB7S-Ctr. FB8	6'-11"
090-0109	Span 10	FB17N-Ctr. FB18	8'-0"
090-0108	Span 10	FB17N-Ctr. FB18	12'-0"
090-0108	Span 10	FB16'N-Ctr. FB17'	20'-0"

See plan sheets for exact locations  
 \*Contractor shall verify Length prior to ordering material



**DETAIL 5**

FILE NAME =	USER NAME =	DESIGNED - JAN	REVISED -
		CHECKED - BTO	REVISED -
		DRAWN - RAB	REVISED -
		CHECKED - JAN	REVISED -

**STATE OF ILLINOIS**  
**DEPARTMENT OF TRANSPORTATION**

**STRUCTURAL STEEL REPAIR DETAILS, SHEET 1**  
**STRUCTURE NO. 090-0108 & 090-0109**  
 SHEET NO. 52 OF 65 SHEETS

F.A.I. RTE. =	SECTION =	COUNT =	TOTAL SHEETS =
474		PEORIA & T/ ZEWELL	129 86
		COI TRACT NO. 68069	
		ILLINOIS FED. AID PROJ. CT	