

**MICROWAVE DETECTOR  
INSTALLATION DETAILS**

HORIZONTAL OFFSET FT (M)	MOUNTING HEIGHT FT (M)		
	MINIMUM	MAXIMUM	RECOMMENDED
10.0 (3.0)	17.0 (5.2)	20.0 (6.1)	17.0 (5.2)
15.0 (4.6)	17.0 (5.2)	20.0 (6.1)	17.0 (5.2)
20.0 (6.1)	17.0 (5.2)	20.0 (6.1)	17.0 (5.2)
25.0 (7.6)	17.0 (5.2)	25.0 (7.6)	20.0 (6.1)
30.0 (9.1)	23.0 (7.0)	25.0 (7.6)	23.0 (7.0)
35.0 (10.7)	25.0 (7.6)	25.0 (7.6)	25.0 (7.6)
40.0 (12.2)	25.0 (7.6)	25.0 (7.6)	25.0 (7.6)
45.0 (13.7)	25.0 (7.6)	25.0 (7.6)	25.0 (7.6)
50.0 (15.2)	25.0 (7.6)	25.0 (7.6)	25.0 (7.6)

DIMENSIONS REFERENCED FROM THE EDGE OF PAVEMENT.

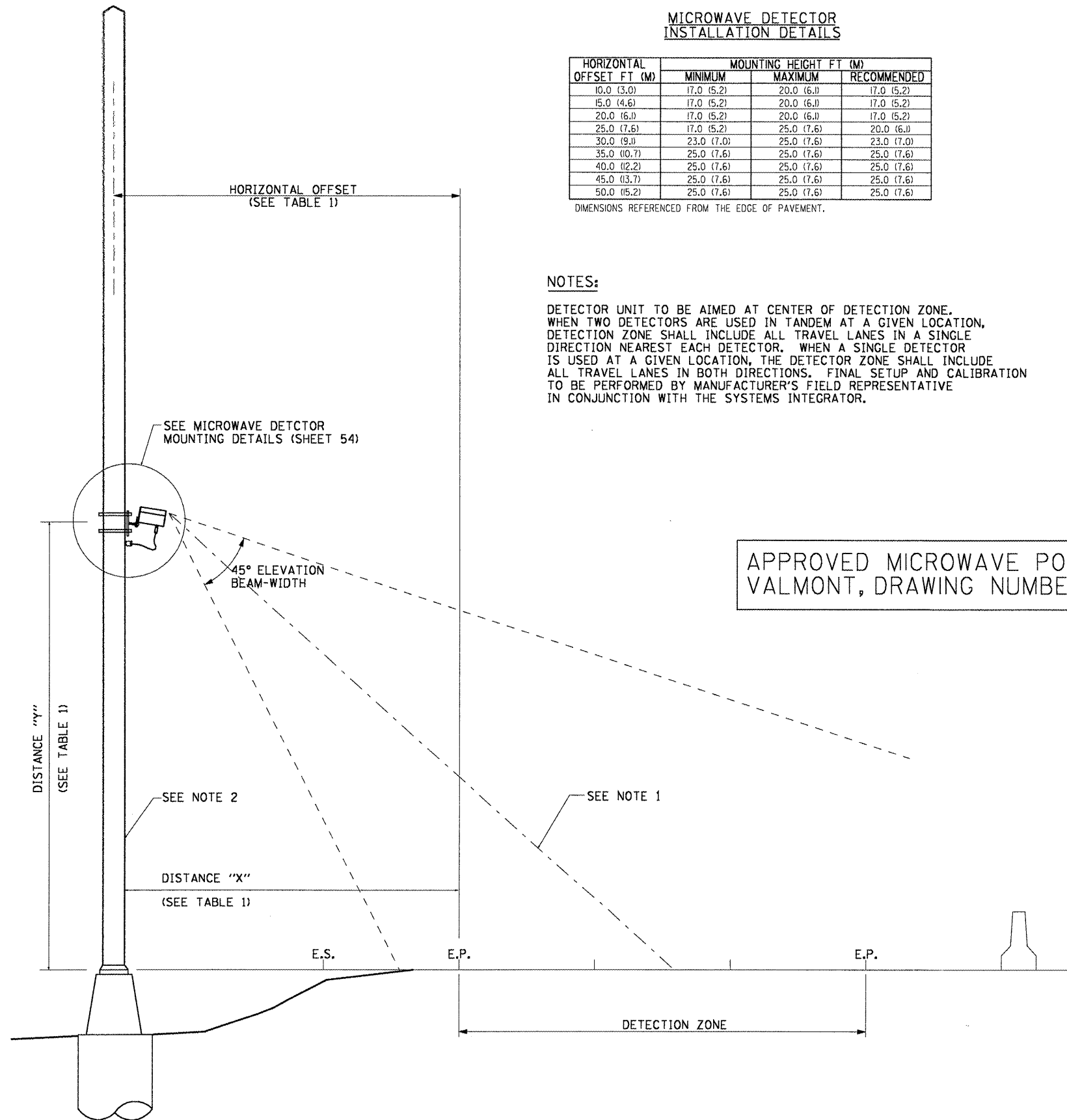
**NOTES:**

DETECTOR UNIT TO BE AIMED AT CENTER OF DETECTION ZONE. WHEN TWO DETECTORS ARE USED IN TANDEM AT A GIVEN LOCATION, DETECTION ZONE SHALL INCLUDE ALL TRAVEL LANES IN A SINGLE DIRECTION NEAREST EACH DETECTOR. WHEN A SINGLE DETECTOR IS USED AT A GIVEN LOCATION, THE DETECTOR ZONE SHALL INCLUDE ALL TRAVEL LANES IN BOTH DIRECTIONS. FINAL SETUP AND CALIBRATION TO BE PERFORMED BY MANUFACTURER'S FIELD REPRESENTATIVE IN CONJUNCTION WITH THE SYSTEMS INTEGRATOR.

DETECTOR POLE			
SHAFT LENGTH	SHOE BASE BOLT CIRCLE	TRANS. BASE BOLT CIRCLE	POLE BASE DIA. (D)
28 ft (8.5 m)	11.0 in (280 mm)	15.0 in (380 mm)	8.0 in (203 mm)

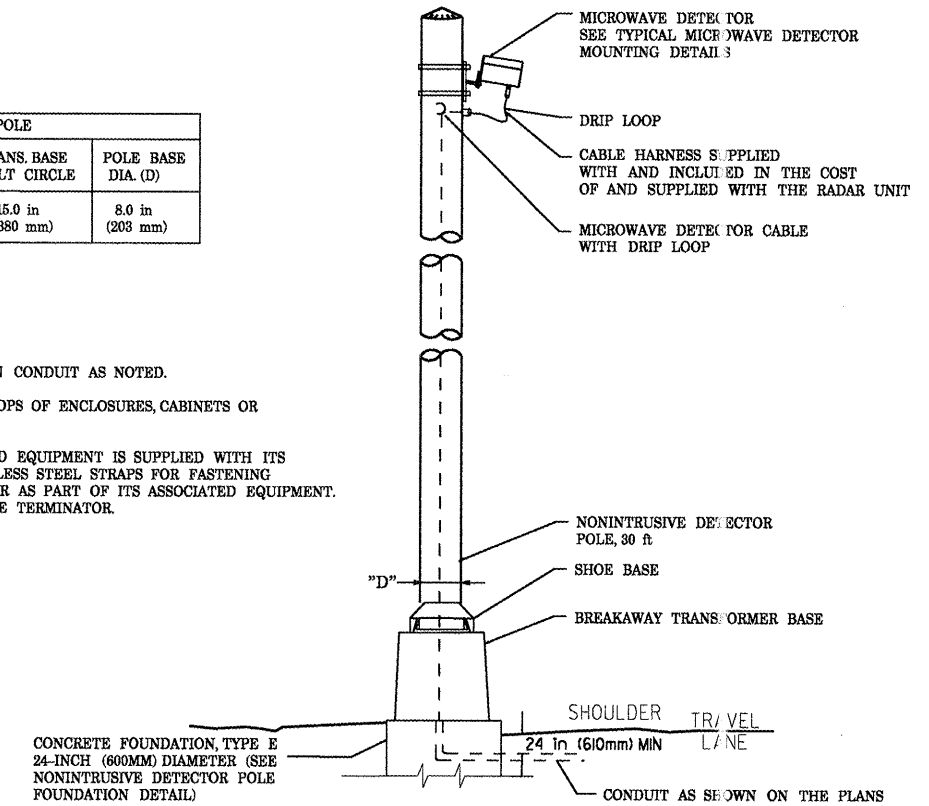
**NOTES:**

1. ALL CABLES TO BE INSTALLED WITHIN CONDUIT AS NOTED.
2. CABLE/CONDUITS SHALL NOT ENTER TOPS OF ENCLOSURES, CABINETS OR PULL/JUNCTION BOXES.
3. CABLE HARNESS FROM POLE MOUNTED EQUIPMENT IS SUPPLIED WITH ITS ASSOCIATED EQUIPMENT. ALL STAINLESS STEEL STRAPS FOR FASTENING CABLES, BRACKETS, ETC. ARE PAID FOR AS PART OF ITS ASSOCIATED EQUIPMENT. PROVIDE DRIP LOOP AT EACH CABLE TERMINATOR.



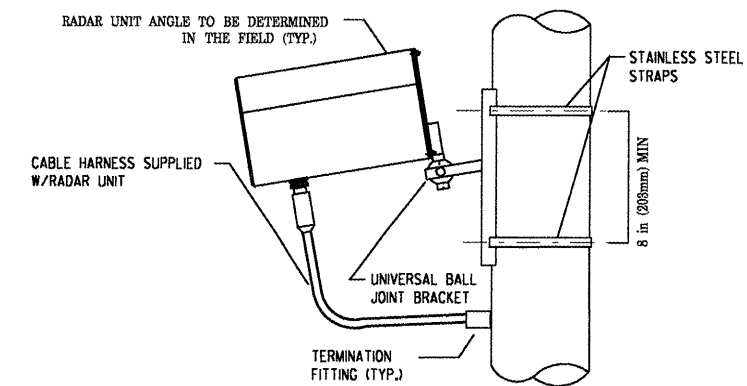
TYPICAL MICROWAVE DETECTOR INSTALLATION CROSS SECTION VIEW

APPROVED MICROWAVE POLE DRAWING:  
VALMONT, DRAWING NUMBER IL4894404



MICROWAVE DETECTOR POLE MOUNTING DETAIL

SEE MICROWAVE DETECTOR INSTALLATION DETAILS TABLE FOR POLE OFFSET AND MOUNTING HEIGHT



MOUNTED TO VERTICAL POLE

MICROWAVE DETECTOR MOUNTING DETAILS