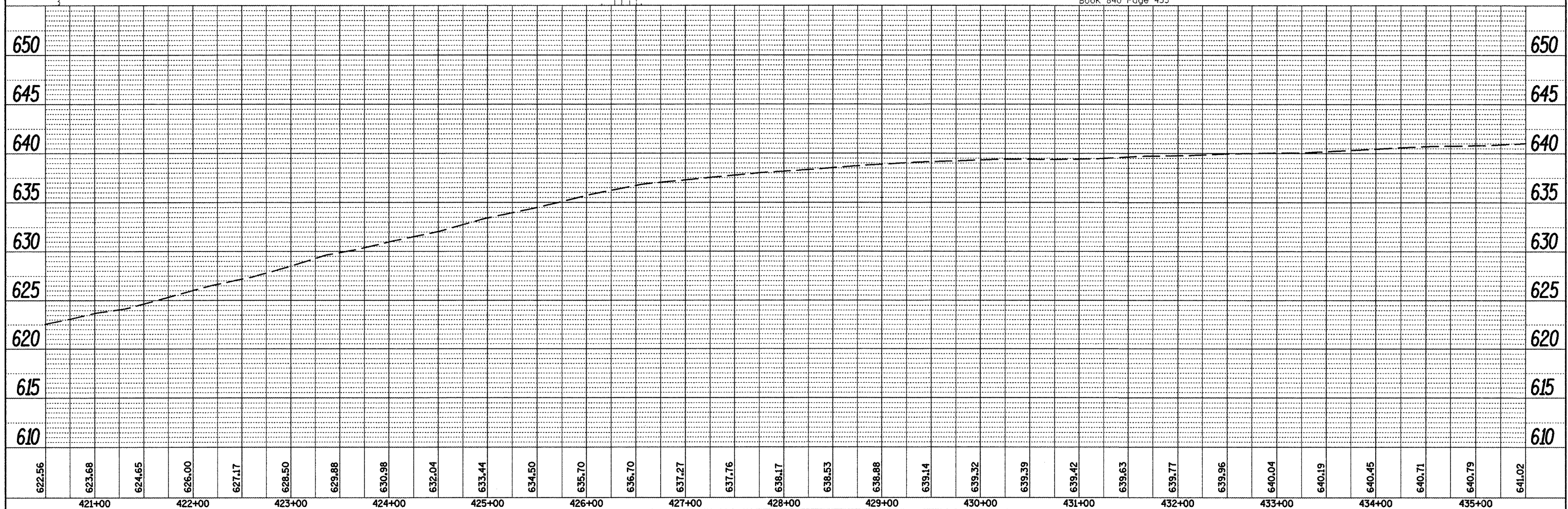
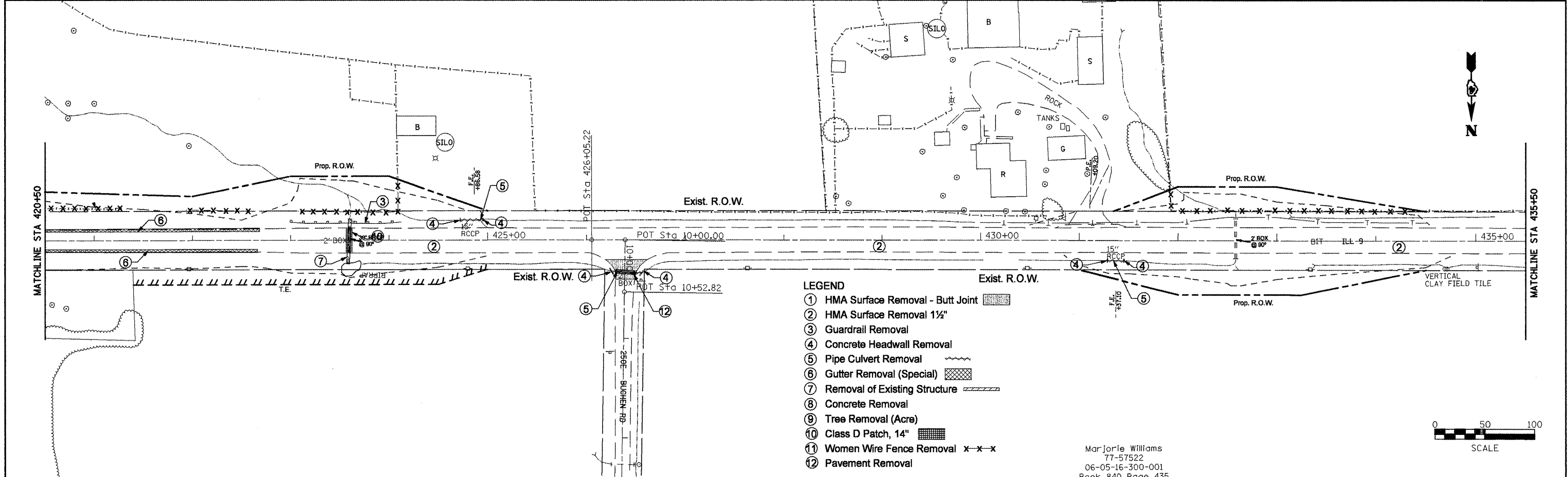


DATE: \_\_\_\_\_  
 BY: \_\_\_\_\_  
 REVIEWED: \_\_\_\_\_  
 PLOTTED: \_\_\_\_\_  
 ALIGNED: \_\_\_\_\_  
 CHECKED: \_\_\_\_\_  
 NOTE BOOK NO.: \_\_\_\_\_  
 CADD FILE NAME: \_\_\_\_\_

DATE: \_\_\_\_\_  
 BY: \_\_\_\_\_  
 REVIEWED: \_\_\_\_\_  
 PLOTTED: \_\_\_\_\_  
 GRADES CHECKED: \_\_\_\_\_  
 STRUCTURE NOTATIONS CHKD: \_\_\_\_\_  
 NOTE BOOK NO.: \_\_\_\_\_



FILE NAME = Removal Plans2.dgn	USER NAME = meridezpj	DESIGNED -	REVISED -	<b>STATE OF ILLINOIS DEPARTMENT OF TRANSPORTATION</b>	<b>EXISTING &amp; REMOVAL PLANS</b>				F.A.P. RTE. 685	SECTION **	COUNTY .	TOTAL SHEETS 329	SHEET NO. 53
		DRAWN -	REVISED -		SCALE:	SHEET NO.	OF SHEETS	STA.	TO STA.	CONTRACT NO. 68599			
		CHECKED -	REVISED -		ILLINOIS FED. AID PROJECT								
		DATE -	REVISED -		(37,38)RS-3,39RS-5(38) • Fulton, McDonough								