

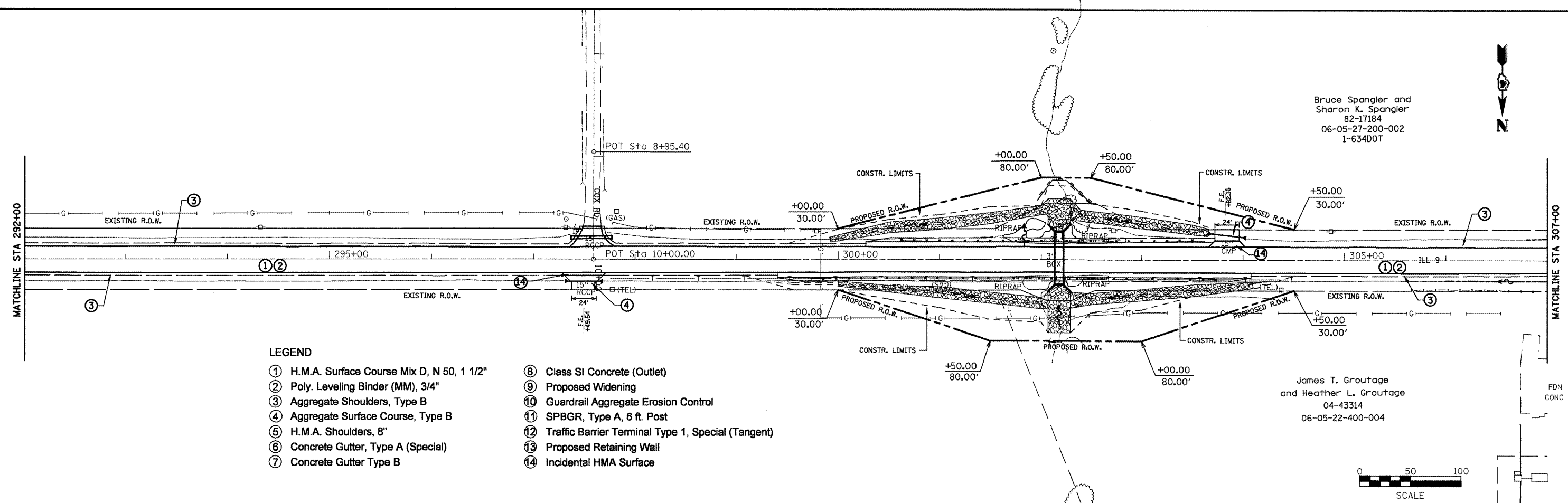
Bruce Spangler and Sharon K. Spangler  
82-17184  
06-05-27-200-002  
1-63400T

James T. Groutage and Heather L. Groutage  
04-43314  
06-05-22-400-004

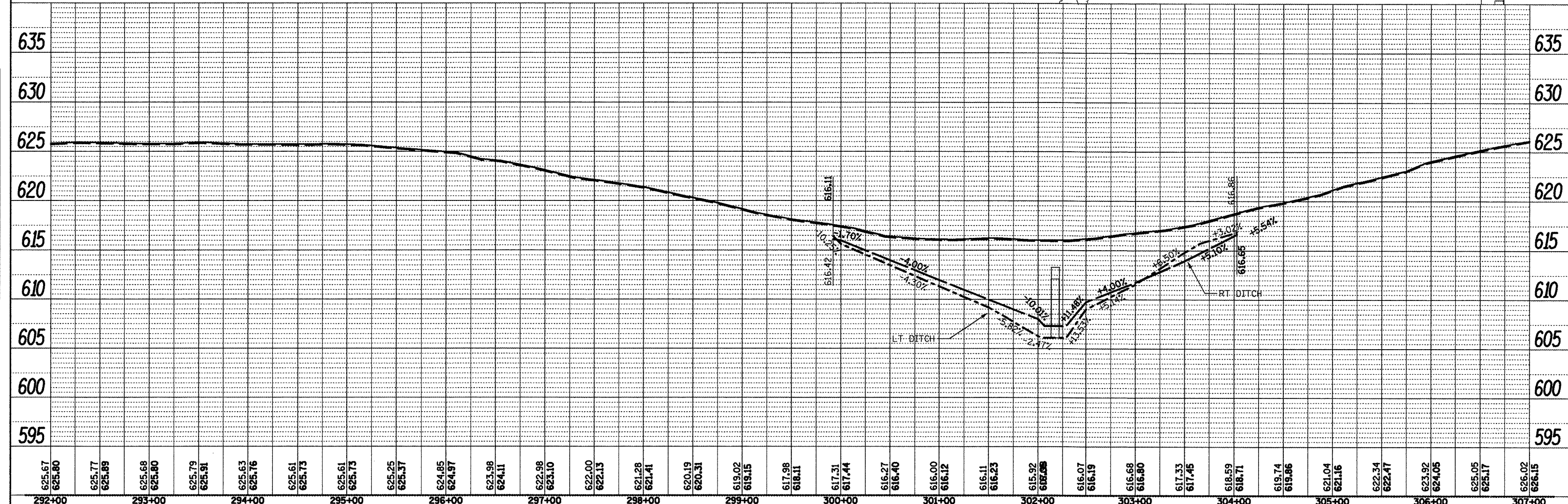
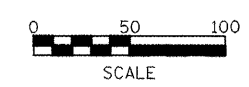


PLAN	DATE
BY	
DATE	
BY	
DATE	
BY	
DATE	

PROFILE	DATE
BY	
DATE	
BY	
DATE	
BY	
DATE	



- LEGEND**
- ① H.M.A. Surface Course Mix D, N 50, 1 1/2"
  - ② Poly. Leveling Binder (MM), 3/4"
  - ③ Aggregate Shoulders, Type B
  - ④ Aggregate Surface Course, Type B
  - ⑤ H.M.A. Shoulders, 8"
  - ⑥ Concrete Gutter, Type A (Special)
  - ⑦ Concrete Gutter Type B
  - ⑧ Class SI Concrete (Outlet)
  - ⑨ Proposed Widening
  - ⑩ Guardrail Aggregate Erosion Control
  - ⑪ SPBGR, Type A, 6 ft. Post
  - ⑫ Traffic Barrier Terminal Type 1, Special (Tangent)
  - ⑬ Proposed Retaining Wall
  - ⑭ Incidental HMA Surface



FILE NAME = Plan Sheets2.dgn	USER NAME = mendezpj	DESIGNED -	REVISED -	STATE OF ILLINOIS DEPARTMENT OF TRANSPORTATION	DESIGN PLAN AND PROFILE	F.A.P. RITE 685	SECTION **	COUNTY *	TOTAL SHEETS 329	SHEET NO. 73
	PLOT SCALE= 100.0000' / IN.	DRAWN -	REVISED -		SCALE:	SHEET NO.	OF	SHEETS	STA.	TO STA.
	PLOT DATE = 3/25/2011	CHECKED -	REVISED -							
		DATE -	REVISED -							