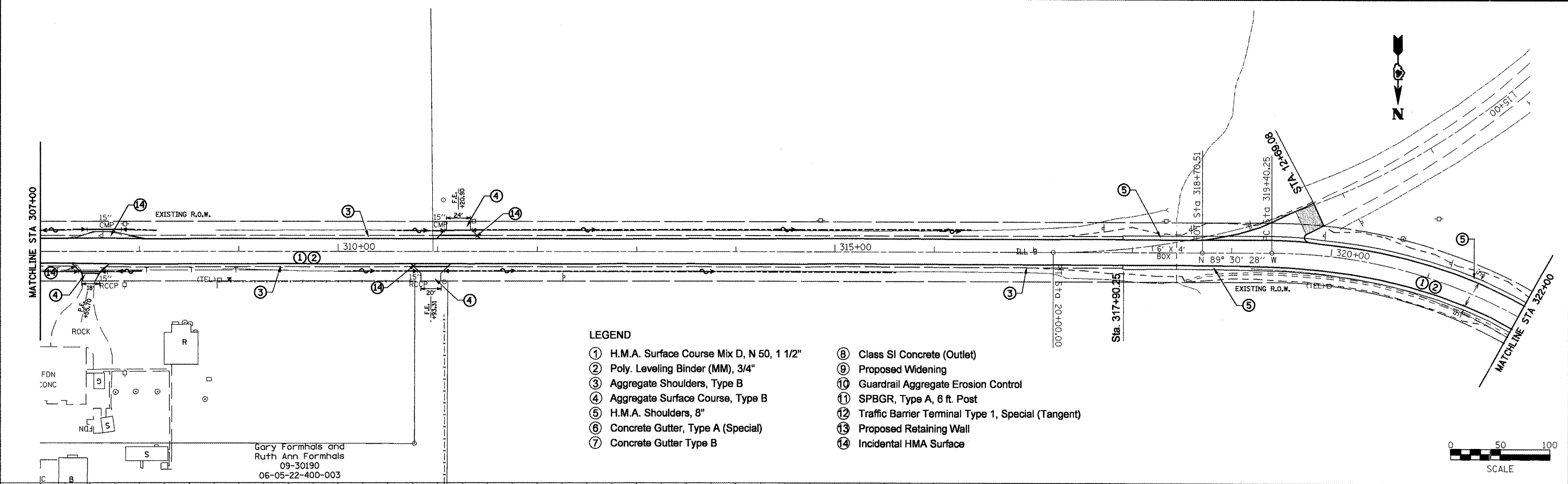


DATE: \_\_\_\_\_ BY: \_\_\_\_\_  
 SURVEYED: \_\_\_\_\_  
 PLAN: \_\_\_\_\_  
 NOTE BOOK: \_\_\_\_\_  
 NO. \_\_\_\_\_

DATE: \_\_\_\_\_ BY: \_\_\_\_\_  
 SURVEYED: \_\_\_\_\_  
 PROFILE: \_\_\_\_\_  
 NOTE BOOK: \_\_\_\_\_  
 NO. \_\_\_\_\_



- LEGEND**
- ① H.M.A. Surface Course Mix D, N 50, 1 1/2"
  - ② Poly. Leveling Binder (MM), 3/4"
  - ③ Aggregate Shoulders, Type B
  - ④ Aggregate Surface Course, Type B
  - ⑤ H.M.A. Shoulders, 8"
  - ⑥ Concrete Gutter, Type A (Special)
  - ⑦ Concrete Gutter Type B
  - ⑧ Class SI Concrete (Outlet)
  - ⑨ Proposed Widening
  - ⑩ Guardrail Aggregate Erosion Control
  - ⑪ SPBGR, Type A, 6 ft. Post
  - ⑫ Traffic Barrier Terminal Type 1, Special (Tangent)
  - ⑬ Proposed Retaining Wall
  - ⑭ Incidental HMA Surface

Gary Formhals and  
 Ruth Ann Formhals  
 09-30190  
 06-05-22-400-003

