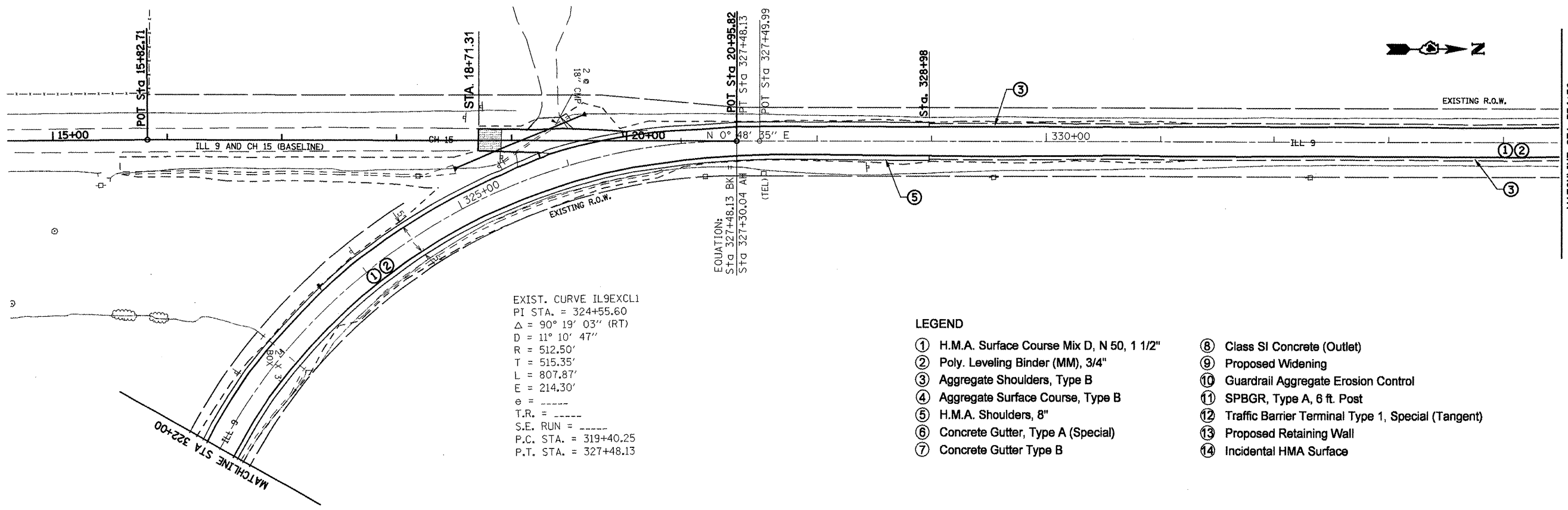


PLAN	SURVEYED	DATE
	PLOTTED	
	CHECKED	
	BY	
	NO.	
	FILE NAME	

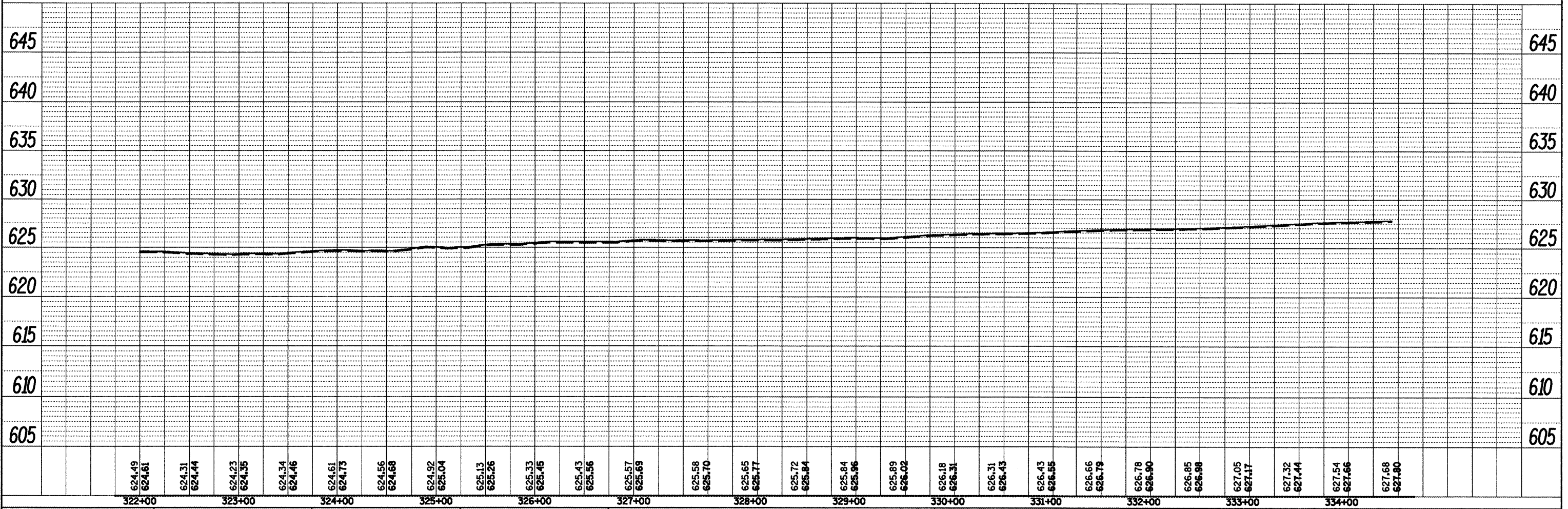
PROFILE	SURVEYED	DATE
	PLOTTED	
	CHECKED	
	BY	
	NO.	
	FILE NAME	



EXIST. CURVE IL9EXCL1  
 PI STA. = 324+55.60  
 Δ = 90° 19' 03'' (RT)  
 D = 11° 10' 47''  
 R = 512.50'  
 T = 515.35'  
 L = 807.87'  
 E = 214.30'  
 T.R. = -----  
 S.E. RUN = -----  
 P.C. STA. = 319+40.25  
 P.T. STA. = 327+48.13

**LEGEND**

- ① H.M.A. Surface Course Mix D, N 50, 1 1/2"
- ② Poly. Leveling Binder (MM), 3/4"
- ③ Aggregate Shoulders, Type B
- ④ Aggregate Surface Course, Type B
- ⑤ H.M.A. Shoulders, 8"
- ⑥ Concrete Gutter, Type A (Special)
- ⑦ Concrete Gutter Type B
- ⑧ Class SI Concrete (Outlet)
- ⑨ Proposed Widening
- ⑩ Guardrail Aggregate Erosion Control
- ⑪ SPBGR, Type A, 6 ft. Post
- ⑫ Traffic Barrier Terminal Type 1, Special (Tangent)
- ⑬ Proposed Retaining Wall
- ⑭ Incidental HMA Surface



FILE NAME = Plan Sheets2.dgn	USER NAME = mendazpj	DESIGNED -	REVISED -	<b>STATE OF ILLINOIS DEPARTMENT OF TRANSPORTATION</b>	<b>DESIGN PLAN AND PROFILE</b>				F.A.P. RTE. 685	SECTION **	COUNTY *	TOTAL SHEETS 329	SHEET NO. 75
	PLOT SCALE = 1/80.0000" / IN.	DRAWN -	REVISED -		SCALE:	SHEET NO.	OF SHEETS	STA.	TO STA.	CONTRACT NO. 68599			
	PLOT DATE = 3/25/2011	CHECKED -	REVISED -		ILLINOIS FED. AID PROJECT								
		DATE -	REVISED -		** (37,38)RS-3,39RS-5;(38)I • Fulton, McDonough								