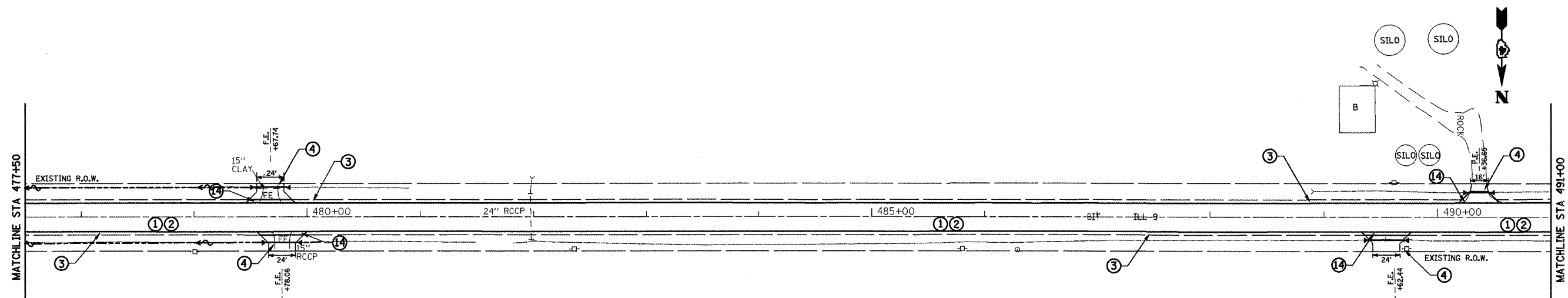
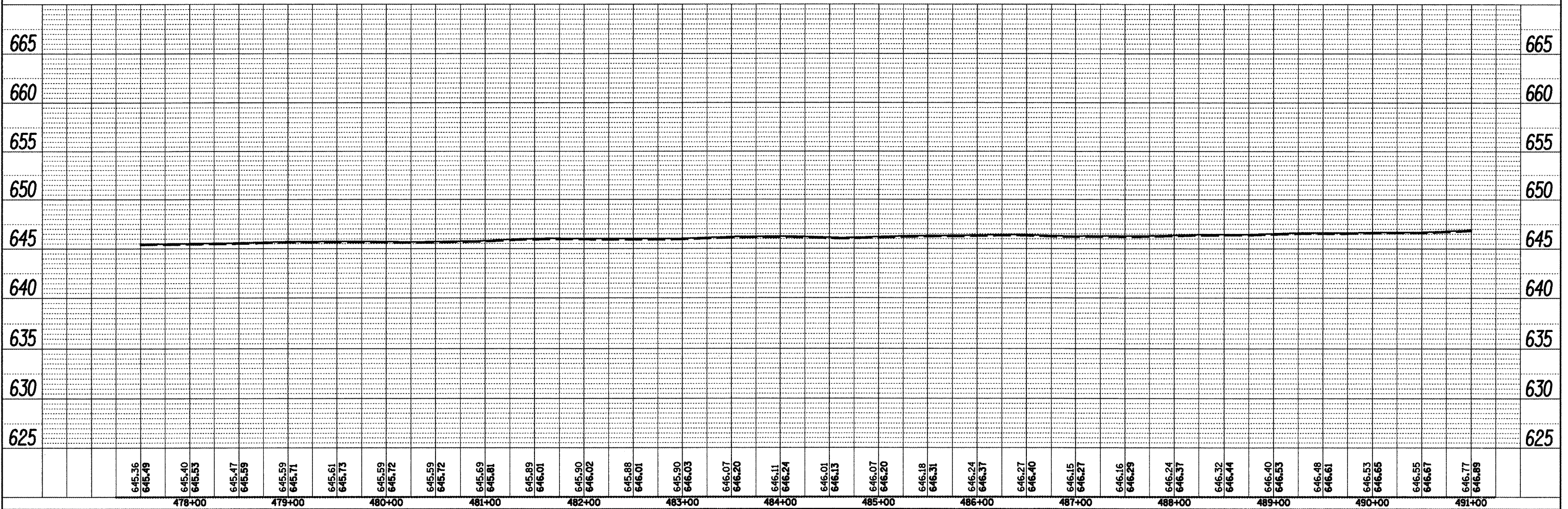
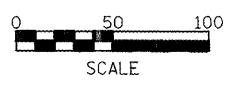


PLAN SURVEYED BY DATE
 PLOTTED BY
 CHECKED BY
 R.T. OF WAY CHECKED BY
 NO. CADD FILE NAME

PROFILE SURVEYED BY DATE
 PLOTTED BY
 CHECKED BY
 R.T. OF WAY CHECKED BY
 NO. STRUCTURE NOTATION CHKD



- LEGEND**
- ① H.M.A. Surface Course Mix D, N 50, 1 1/2"
 - ② Poly. Leveling Binder (MM), 3/4"
 - ③ Aggregate Shoulders, Type B
 - ④ Aggregate Surface Course, Type B
 - ⑤ H.M.A. Shoulders, 8"
 - ⑥ Concrete Gutter, Type A (Special)
 - ⑦ Concrete Gutter Type B
 - ⑧ Class SI Concrete (Outlet)
 - ⑨ Proposed Widening
 - ⑩ Guardrail Aggregate Erosion Control
 - ⑪ SPBGR, Type A, 6 ft. Post
 - ⑫ Traffic Barrier Terminal Type 1, Special (Tangent)
 - ⑬ Proposed Retaining Wall
 - ⑭ Incidental HMA Surface



FILE NAME = Plan Sheets2.dgn	USER NAME = mendezpj	DESIGNED -	REVISED -	STATE OF ILLINOIS DEPARTMENT OF TRANSPORTATION	DESIGN PLAN AND PROFILE				F.A.P. RTE. 685	SECTION **	COUNTY *	TOTAL SHEETS 329	SHEET NO. 86
		DRAWN -	REVISED -		SCALE:	SHEET NO.	OF	SHEETS	STA.	TO STA.	CONTRACT NO. 68599		
		PLOT SCALE = 1/88.0000' / IN.	REVISED -		ILLINOIS FED. AID PROJECT								
		PLOT DATE = 3/25/2011	REVISED -		** (37,38)RS-3,39RS-5(38)I • Fulton, McDonough								