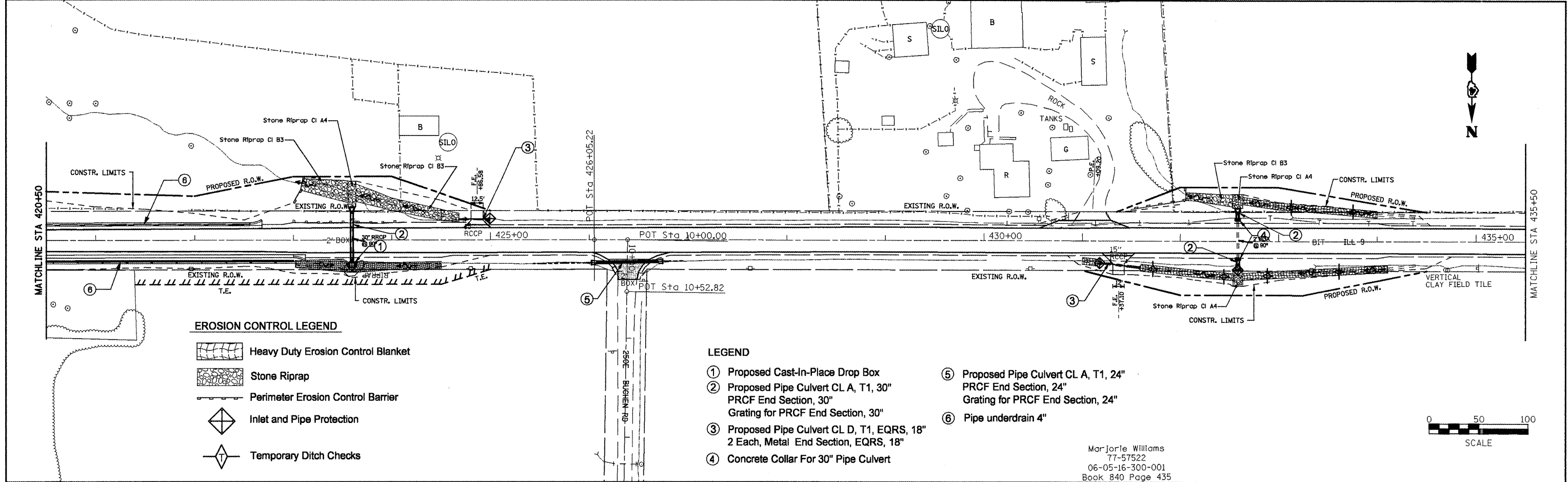


DATE: \_\_\_\_\_  
 BY: \_\_\_\_\_  
 REVIEWED: \_\_\_\_\_  
 PLOTTED: \_\_\_\_\_  
 ALIGNMENT CHECKED: \_\_\_\_\_  
 NOTE BOOK NO.: \_\_\_\_\_  
 STRIP FILE NAME: \_\_\_\_\_

DATE: \_\_\_\_\_  
 BY: \_\_\_\_\_  
 REVIEWED: \_\_\_\_\_  
 PLOTTED: \_\_\_\_\_  
 GRADES CHECKED: \_\_\_\_\_  
 STRIP FILE NAME: \_\_\_\_\_  
 NOTE BOOK NO.: \_\_\_\_\_



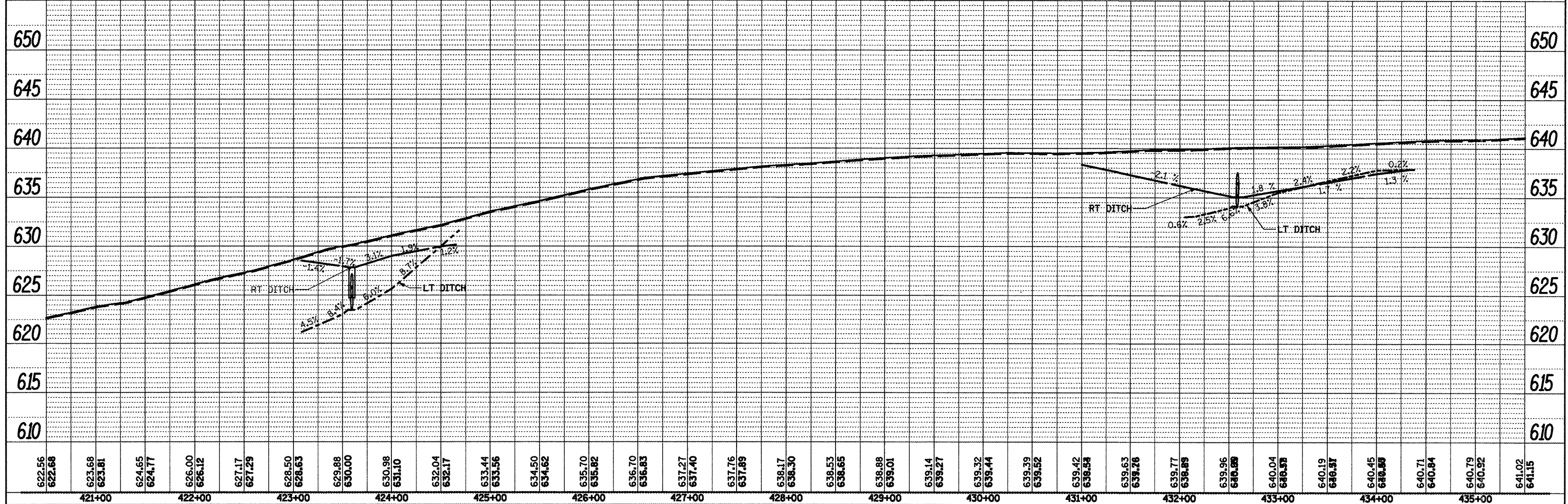
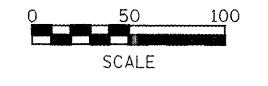
**EROSION CONTROL LEGEND**

- Heavy Duty Erosion Control Blanket
- Stone Riprap
- Perimeter Erosion Control Barrier
- Inlet and Pipe Protection
- Temporary Ditch Checks

**LEGEND**

- ① Proposed Cast-In-Place Drop Box
- ② Proposed Pipe Culvert CL A, T1, 30" PRCF End Section, 30" Grating for PRCF End Section, 30"
- ③ Proposed Pipe Culvert CL D, T1, EQRS, 18" 2 Each, Metal End Section, EQRS, 18"
- ④ Concrete Collar For 30" Pipe Culvert
- ⑤ Proposed Pipe Culvert CL A, T1, 24" PRCF End Section, 24" Grating for PRCF End Section, 24"
- ⑥ Pipe underdrain 4"

Marjorie Williams  
 77-57522  
 06-05-16-300-001  
 Book 840 Page 435



FILE NAME = Drainage Plans2.dgn	USER NAME = mendezp.j	DESIGNED -	REVISED -	<b>STATE OF ILLINOIS DEPARTMENT OF TRANSPORTATION</b>				<b>DRAINAGE PLANS / EROSION CONTROL PLANS</b>				F.A.P. RTE. 685	SECTION **	COUNTY *	TOTAL SHEETS 329	SHEET NO. 123			
		DRAWN -	REVISED -									SCALE:				CONTRACT NO. 68599			
		CHECKED -	REVISED -									SHEET NO. OF SHEETS				ILLINOIS FED. AID PROJECT			
		DATE -	REVISED -									STA. TO STA.				* Fulton, McDonough			