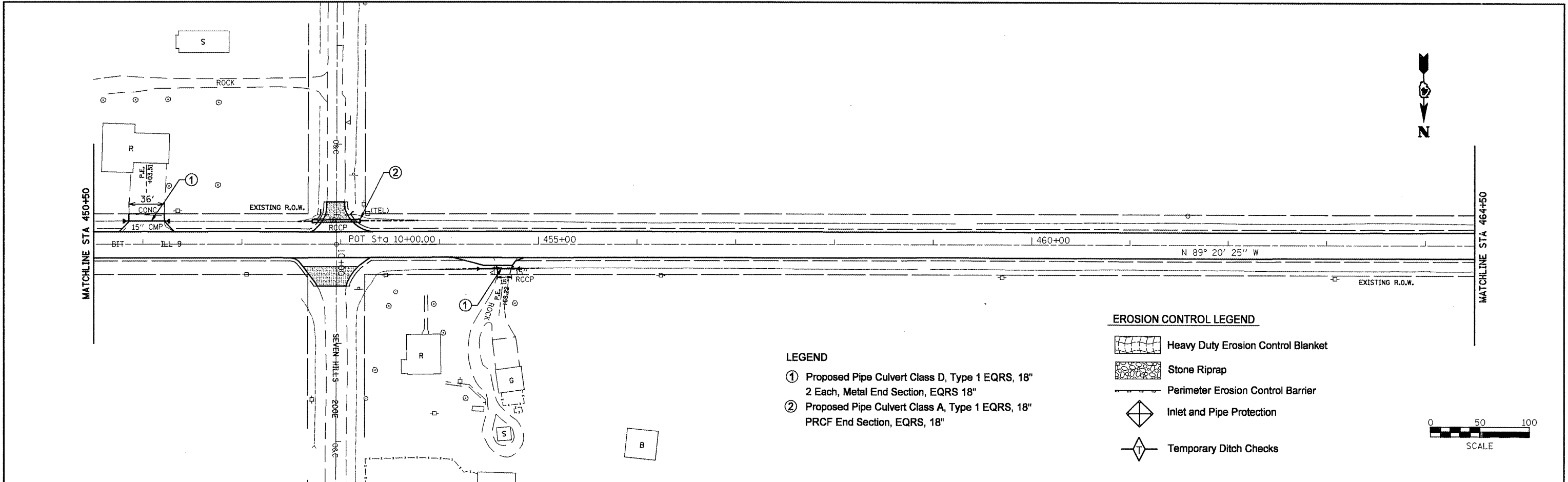


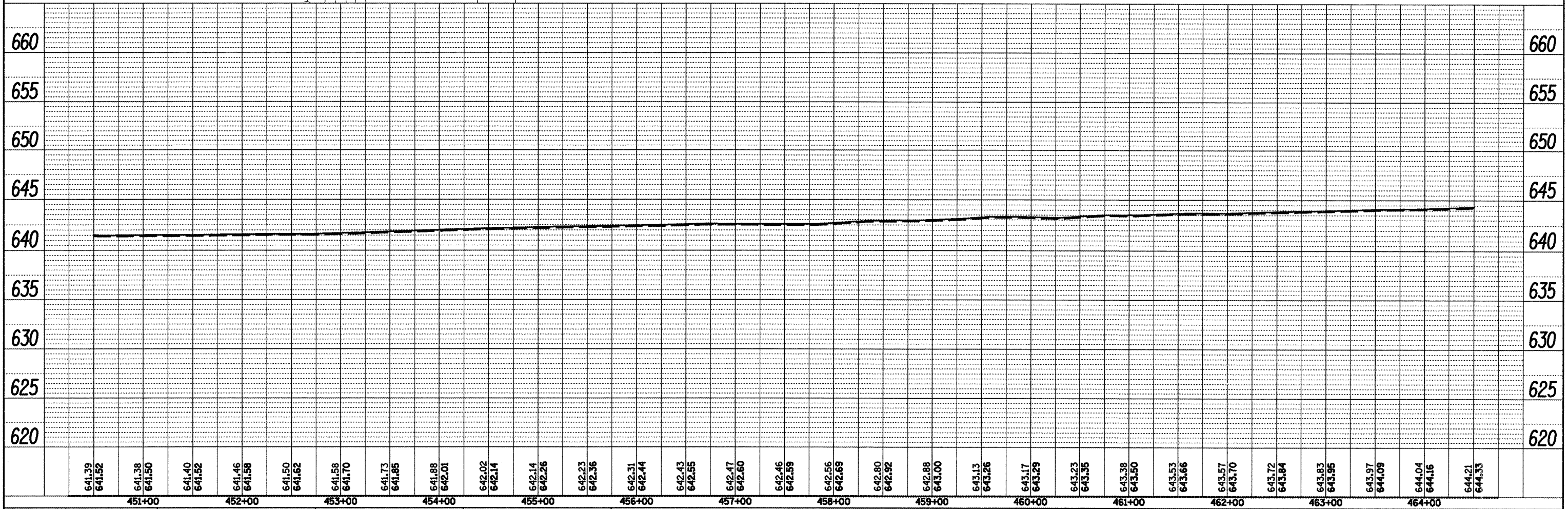
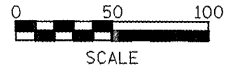
PLAN	SURVEYED	BY	DATE
	PLOTTED		
	REVISIONS CHECKED		
	NO. _____		
	NOTE BOOK		
	NO. _____		
	CADD FILE NAME		

PROFILE	SURVEYED	BY	DATE
	PLOTTED		
	REVISIONS CHECKED		
	NO. _____		
	NOTE BOOK		
	NO. _____		
	STRUCTURE NOTATION		



- LEGEND**
- ① Proposed Pipe Culvert Class D, Type 1 EQRS, 18"  
2 Each, Metal End Section, EQRS 18"
  - ② Proposed Pipe Culvert Class A, Type 1 EQRS, 18"  
PRCF End Section, EQRS, 18"

- EROSION CONTROL LEGEND**
- Heavy Duty Erosion Control Blanket
  - Stone Riprap
  - Perimeter Erosion Control Barrier
  - Inlet and Pipe Protection
  - Temporary Ditch Checks



FILE NAME = Drainage Plans2.dgn	USER NAME = mendezp	DESIGNED -	REVISED -	<b>STATE OF ILLINOIS DEPARTMENT OF TRANSPORTATION</b>	<b>DRAINAGE PLANS / EROSION CONTROL PLANS</b>		F.A.P. RTE. =	SECTION	COUNTY	TOTAL SHEETS	SHEET NO.				
		DRAWN -	REVISED -		SCALE:	SHEET NO.	OF	SHEETS	STA.	TO STA.	685	**		329	125
	PLOT SCALE = 100.0000' / IN.	CHECKED -	REVISED -						CONTRACT NO. 68599						
	PLOT DATE = 3/25/2011	DATE -	REVISED -						ILLINOIS FED. AID PROJECT						