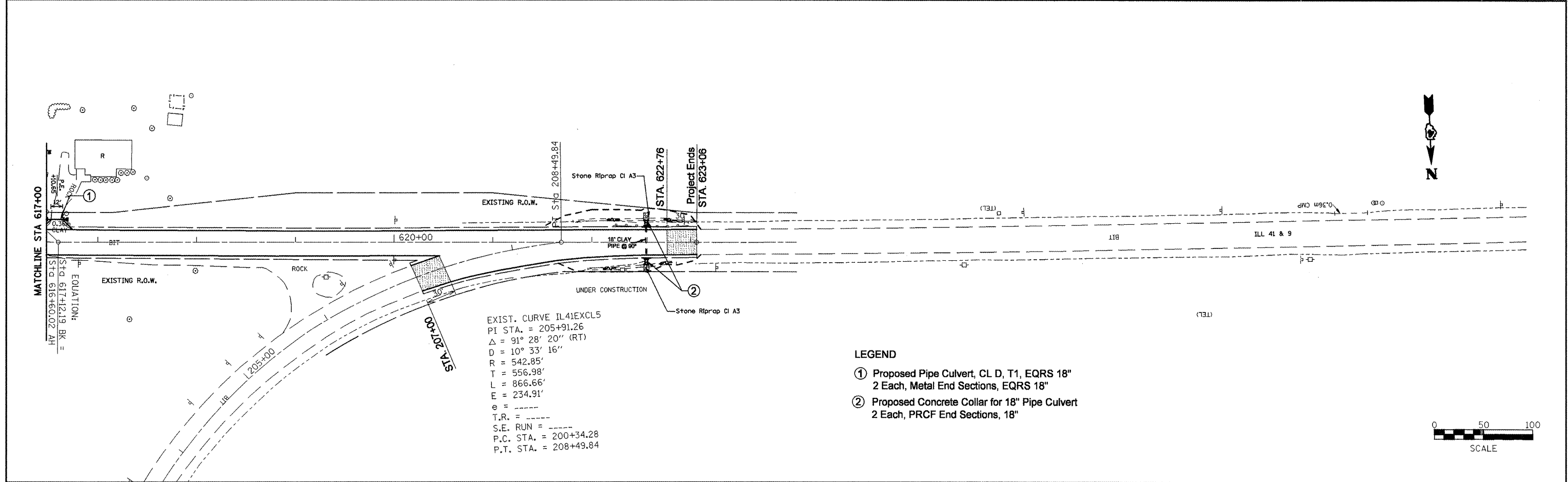


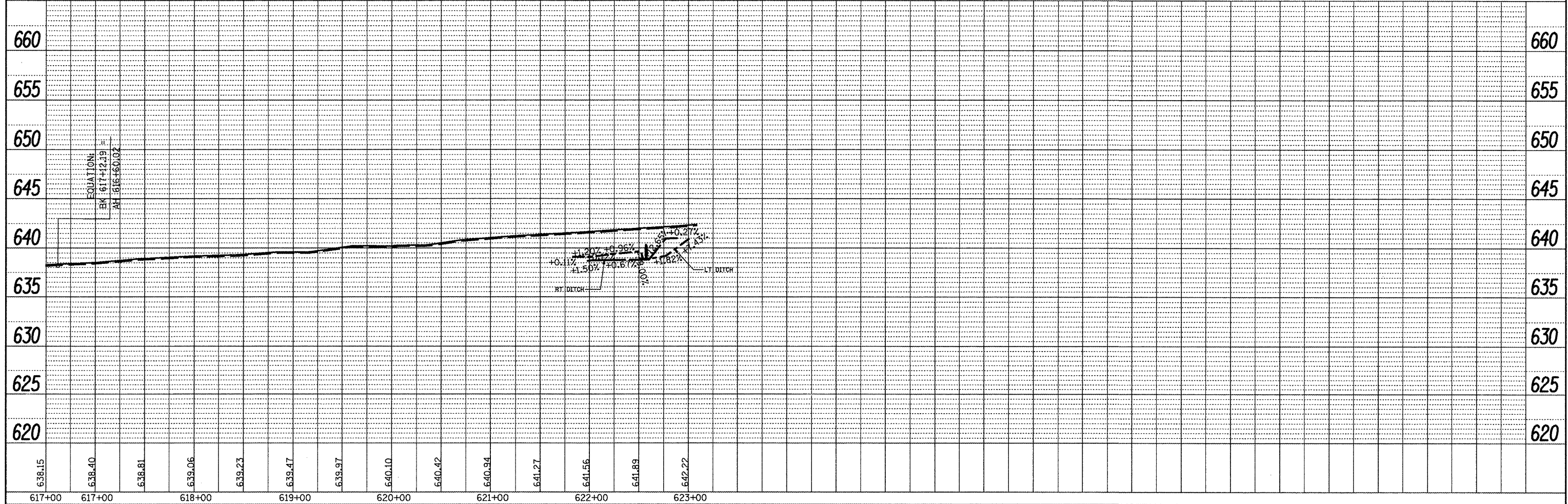
DATE	
BY	
DESIGNED	
PLANNED	
NOTED	
NO.	

DATE	
BY	
DESIGNED	
PLANNED	
NOTED	
NO.	



EXIST. CURVE IL41EXCL5
 PI STA. = 205+91.26
 $\Delta = 91^\circ 28' 20''$ (RT)
 $D = 10^\circ 33' 16''$
 $R = 542.85'$
 $T = 556.98'$
 $L = 866.66'$
 $E = 234.91'$
 $e = \text{---}$
 $T.R. = \text{---}$
 $S.E. \text{ RUN} = \text{---}$
 $P.C. \text{ STA.} = 200+34.28$
 $P.T. \text{ STA.} = 208+49.84$

- LEGEND**
- ① Proposed Pipe Culvert, CL D, T1, EQRS 18"
2 Each, Metal End Sections, EQRS 18"
 - ② Proposed Concrete Collar for 18" Pipe Culvert
2 Each, PRCF End Sections, 18"



FILE NAME = Drainage Plans3.dgn	USER NAME = crespole	DESIGNED -	REVISED -	STATE OF ILLINOIS DEPARTMENT OF TRANSPORTATION	DRAINAGE PLANS / EROSION CONTROL PLANS		F.A.P. RTE. 685	SECTION **	COUNTY .	TOTAL SHEETS 329	SHEET NO. 135	
	PLLOT SCALE = 1/8" = 100' / IN.	DRAWN -	REVISED -		SCALE:	SHEET NO. OF SHEETS	STA. TO STA.	CONTRACT NO. 68599				
	PLLOT DATE = 4/8/2011	CHECKED -	REVISED -		ILLINOIS FED. AID PROJECT							
		DATE -	REVISED -		• Fulton, McDonough •							