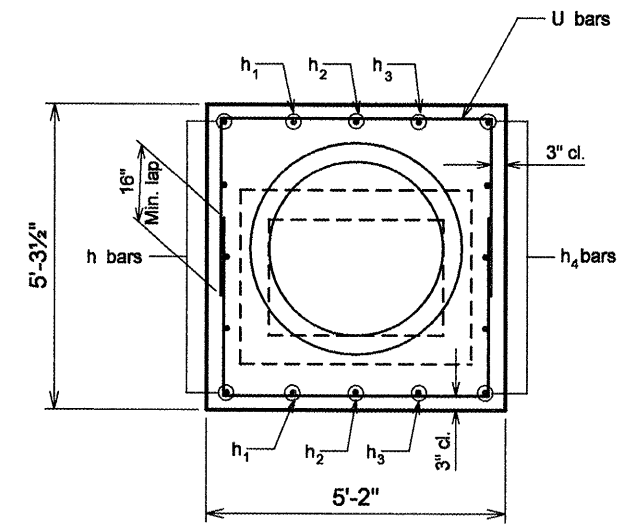


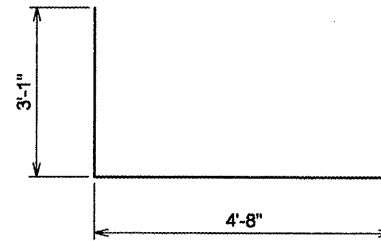
TOP VIEW OF CONCRETE COLLAR

NOT TO SCALE



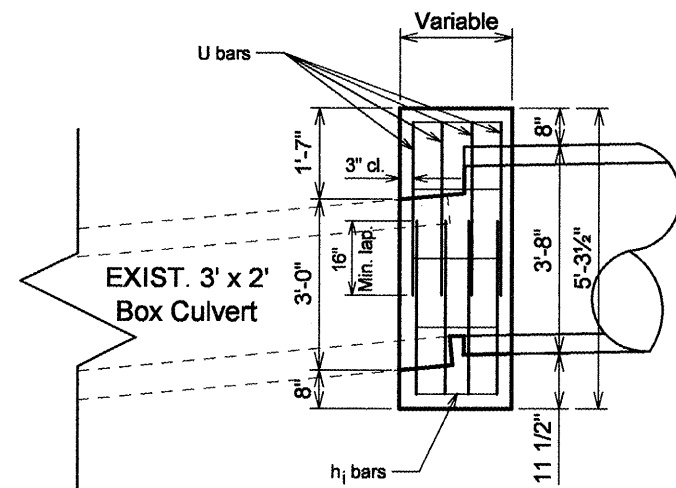
FRONT VIEW OF CONCRETE COLLAR

NOT TO SCALE



#5 U bar 8 required per collar

NOT TO SCALE



ELEVATION VIEW OF CONCRETE COLLAR

NOT TO SCALE

BILL OF MATERIALS FOR CONCRETE COLLAR

BAR	SIZE	NO.	LENGTH	SHAPE
h	#4	5	1'-9"	————
h ₁	#4	2	1'-7"	————
h ₂	#4	2	1'-5"	————
h ₃	#4	2	1'-3"	————
h ₄	#4	5	1'-1"	————
U	#5	8	10'-10"	⌊
DESCRIPTION		UNIT	QTY	
* Concrete Collar		CU YD	1.0	
* Reinforcement Bars		LB	105.52	

* For Information Only

NOTES:

The collar shall be constructed entirely of CLASS SI CONCRETE and in accordance with the applicable portions of section 503 of the Standard Specifications. Reinforcement Bars shall conform to section 508.

FILE NAME = sht-details.dgn	USER NAME = mende2pj	DESIGNED -	REVISED -
		DRAWN -	REVISED -
		CHECKED -	REVISED -
		DATE -	REVISED -

**STATE OF ILLINOIS
DEPARTMENT OF TRANSPORTATION**

**CONCRETE COLLAR DETAIL
RT. STA. 447 + 89.94**

F.A.P. RTE. 685	SECTION ..	COUNTY ..	TOTAL SHEETS 329	SHEET NO. 147
CONTRACT NO. 68599			ILLINOIS FED. AID PROJECT	

SCALE: SHEET NO. OF SHEETS STA. TO STA.