

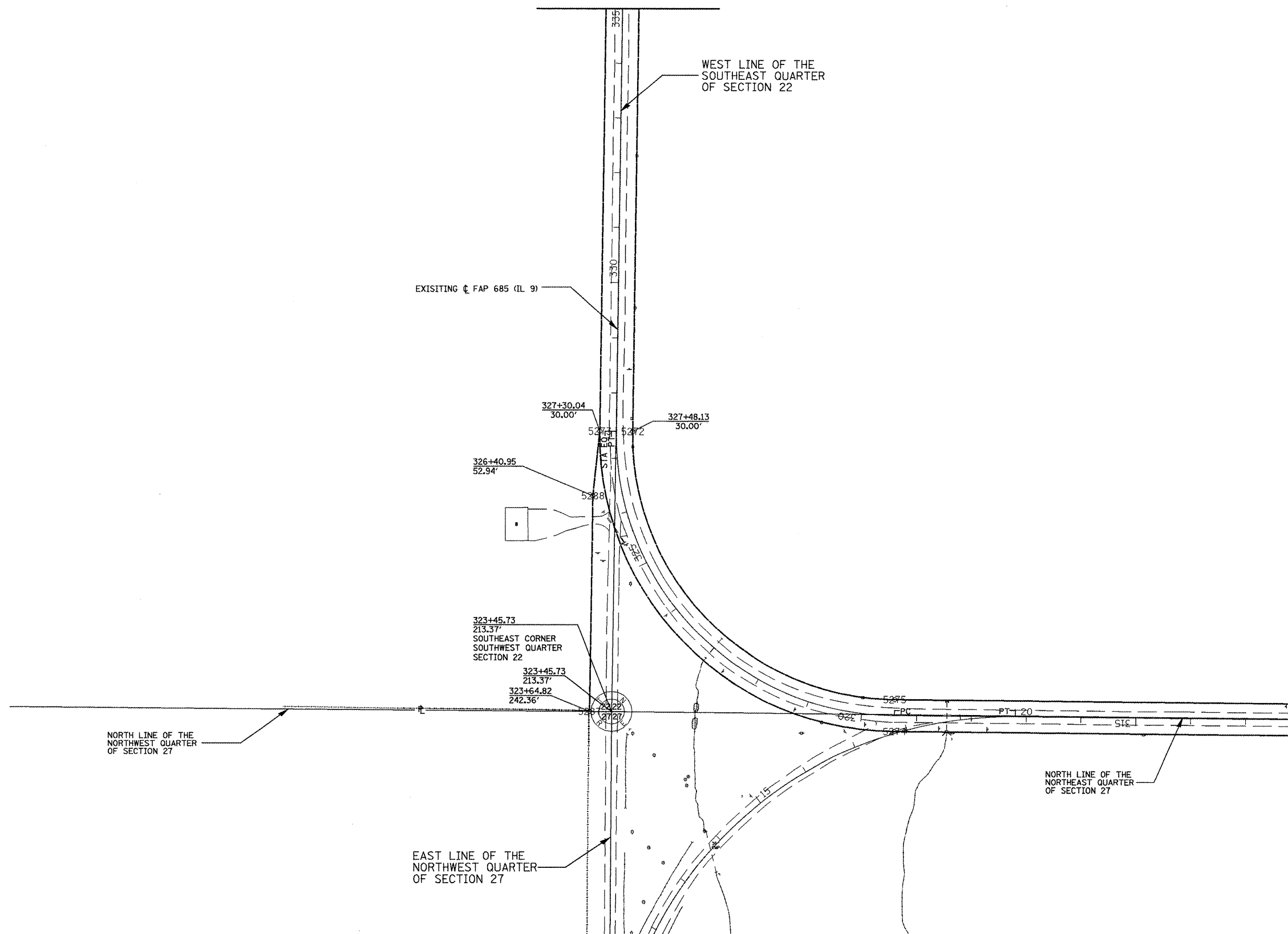
PROPOSED RIGHT OF WAY LINE  
 EXISTING RIGHT OF WAY LINE  
 PROPOSED TEMPORARY EASEMENT LINE

Section 22 T 7 N R 1 E 4th P.M.



STATION EQUATION:  
 STA 327+48.13 BK=  
 STA 327+30.04 AH

EXIST. CURVE IL9CURV1  
 PI STA. = 324+55.60  
 $\Delta = 90^\circ 19' 03''$  (RT)  
 $D = 11^\circ 10' 47''$   
 $R = 512.50'$   
 $T = 515.35'$   
 $L = 807.87'$   
 $E = 214.30'$   
 P.C. STA. = 319+40.26  
 P.T. STA. = 327+48.13



EXIST. CURVE 3500ECURV1  
 PI STA. = 15+80.47  
 $\Delta = 90^\circ 02' 44''$  (RT)  
 $D = 7^\circ 47' 43''$   
 $R = 735.00'$   
 $T = 735.58'$   
 $L = 1,155.12'$   
 $E = 304.86'$   
 P.C. STA. = 8+44.88  
 P.T. STA. = 20+00.00

Section 27 T 7 N R 1 E 4th P.M.

FOR OLD R.O.W. SEE:  
 PLANFILE 5 SHEETS 35, 36 Plat File:39

FILE NAME = 119/119.m32	USER NAME = crespole	DESIGNED - PCF	REVISED -
		DRAWN - MLA	REVISED -
	PLDT SCALE = 200.0000' / IN.	CHECKED - PCF	REVISED -
	PLDT DATE = 4/6/2011	DATE - 01-2011	REVISED -

STATE OF ILLINOIS  
 DEPARTMENT OF TRANSPORTATION

RIGHT OF WAY PLANS

SCALE: 1"=100' SHEET NO. OF SHEETS STA. 312+00.00 TO STA. 335+00.00

F.A.P. RTE. 685	SECTION ..	COUNTY ..	TOTAL SHEETS 329	SHEET NO. 181
Cat.# 032750-02			CONTRACT NO. 68599	
ILLINOIS FED. AID PROJECT				

R-94-010-07

137.38195-3.3985-5/381 Eulston, McDeer...