

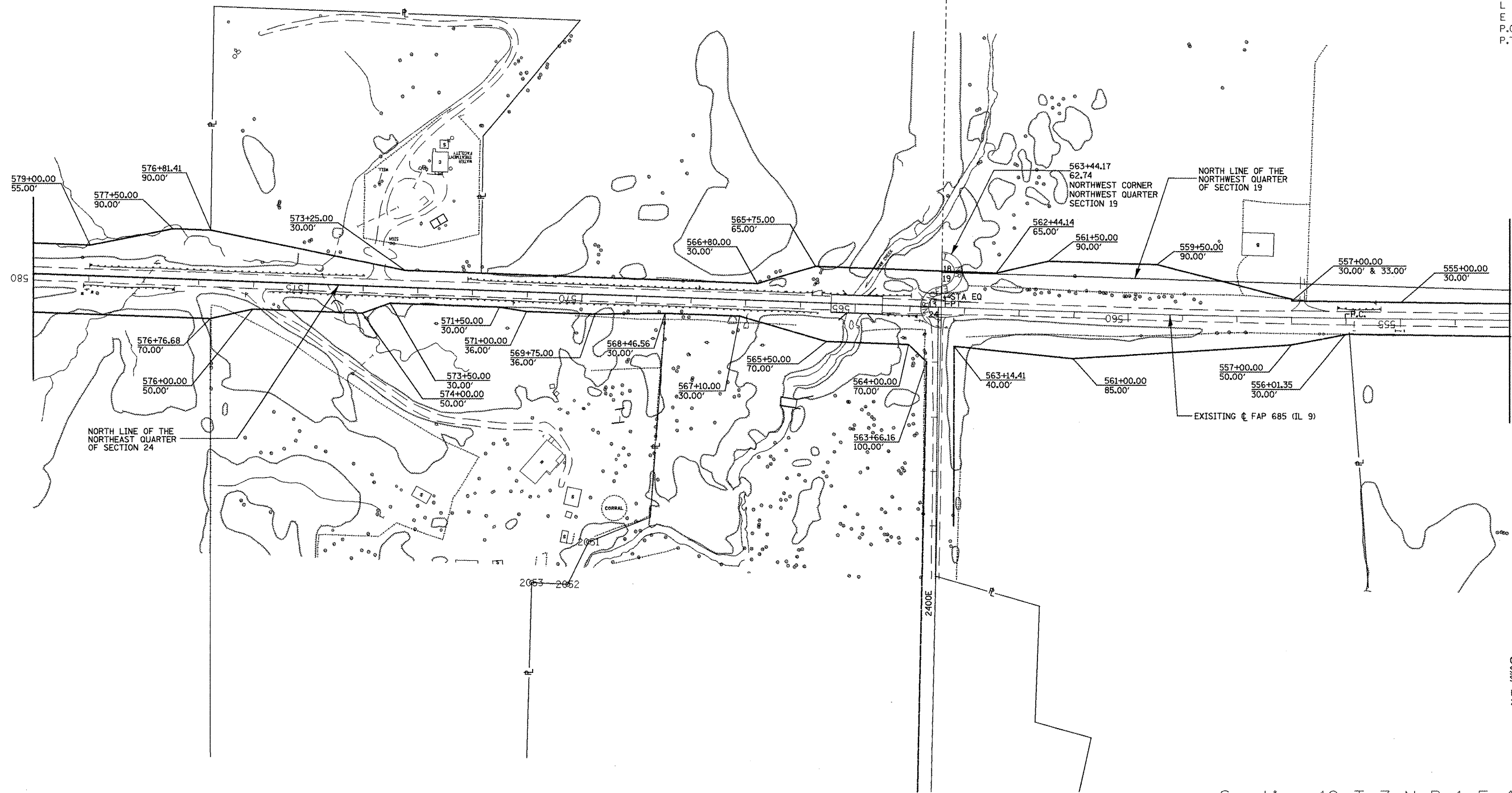
PROPOSED RIGHT OF WAY LINE
 EXISTING RIGHT OF WAY LINE
 PROPOSED TEMPORARY EASEMENT LINE

Section 13, T 7 N R 1 W 4th P.M.

Section 18 T 7 N R 1 E 4th P.M.



EXIST. CURVE IL9CURV3
 PI STA. = 559+68.35
 $\Delta = 1^\circ 27' 12''$ (RT)
 $D = 0^\circ 11' 53''$
 $R = 28,933.81'$
 $T = 367.00'$
 $L = 733.96'$
 $E = 2.33'$
 P.C. STA. = 556+01.35
 P.T. STA. = 563+35.31



Section 24, T 7 N R 1 W 4th P.M.

Section 19 T 7 N R 1 E 4th P.M.

FOR OLD R.O.W. SEE:
 PLANFILE 5 SHEETS 33A,33B Plat File: 39

☺ FAP 686 STA EQ:
 STA 563+35.31 BK
 STA 563+35.80 AH
 FAP 685 ☺ STA. 563+42.92 =
 2400 E ☺ STA. 99.54

FILE NAME = 119/119.m32	USER NAME = crespole	DESIGNED - PCF	REVISED -
		DRAWN - MLA	REVISED -
		CHECKED - PCF	REVISED -
		DATE - 01-2011	REVISED -

STATE OF ILLINOIS
 DEPARTMENT OF TRANSPORTATION

RIGHT OF WAY PLANS

SCALE: 1"=100' SHEET NO. OF SHEETS STA. 553+00.00 TO STA. 580+00.00

F.A.P. RTE.	SECTION	COUNTY	TOTAL SHEETS	SHEET NO.
685	**	*	329	190
Cat.# 032750-02			CONTRACT NO. 68599	
ILLINOIS FED. AID PROJECT				

R-94-010-07

** (37-3495-3-3985-5438) E. J. ...