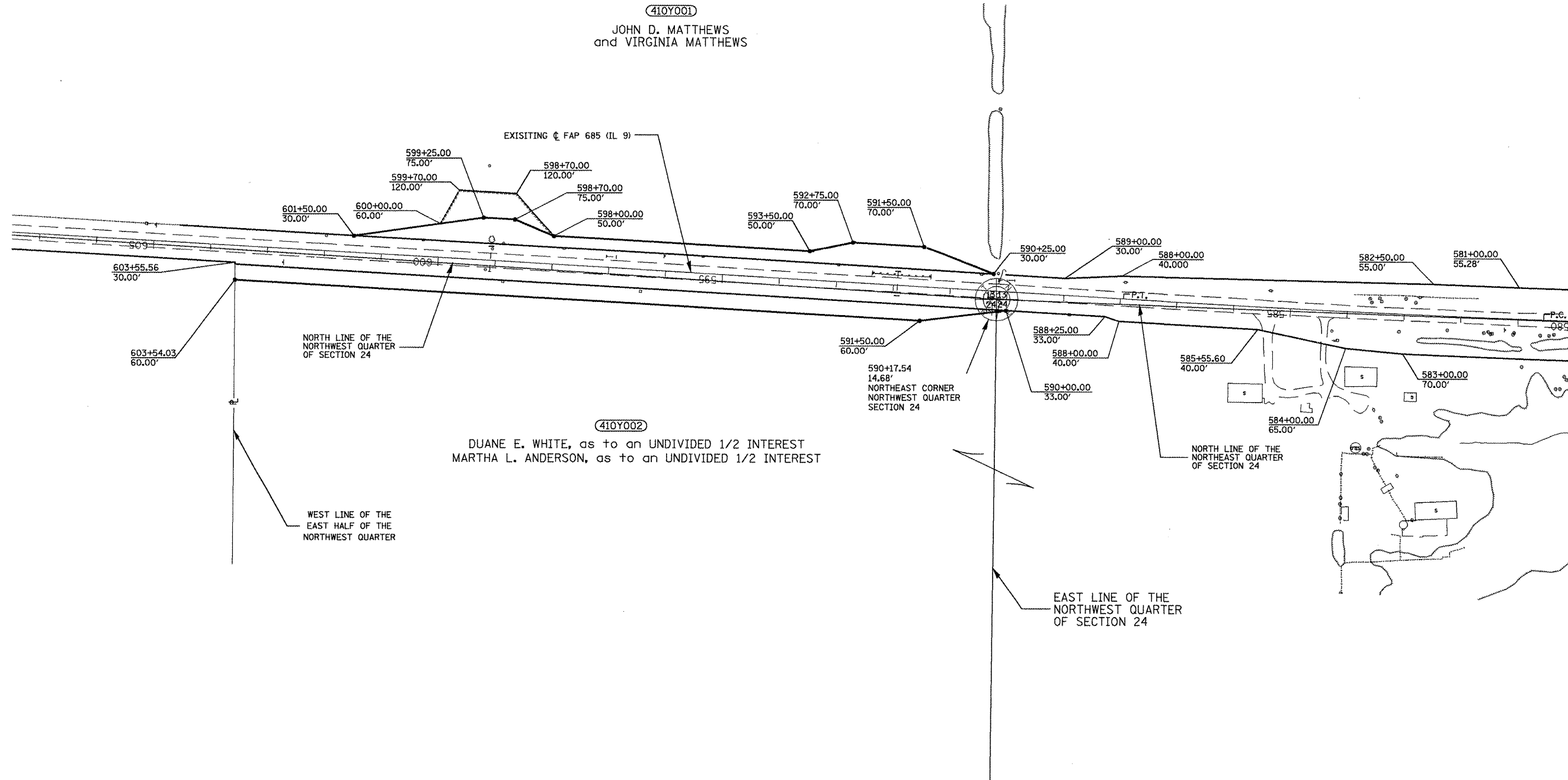


Section 13, T 7 N R 1 W 4th P.M.

PROPOSED RIGHT OF WAY LINE
 EXISTING RIGHT OF WAY LINE
 PROPOSED TEMPORARY EASEMENT LINE

EXIST. CURVE IL9CURV4
 PI STA. = 584+24.78
 $\Delta = 1^{\circ} 13' 37''$ (RT)
 $R = 34,528.54'$
 $T = 369.70'$
 $L = 739.38'$
 $E = 1.98'$
 P.C. STA. = 580+55.08
 P.T. STA. = 587+94.46



Section 24, T 7 N R 1 W 4th P.M.

FOR OLD R.O.W. SEE:
 PLANFILE 5 SHEETS 33,33A Plat File: 39

FILE NAME = j19v119.m32	USER NAME = crespole	DESIGNED - PCF	REVISED -
		DRAWN - MLA	REVISED -
		CHECKED - PCF	REVISED -
		DATE - 01-2011	REVISED -

**STATE OF ILLINOIS
 DEPARTMENT OF TRANSPORTATION**

RIGHT OF WAY PLANS			
SCALE: 1"=100'	SHEET NO. OF SHEETS	STA. 580+00.00 TO STA. 603+00.00	R-94-010-07

F.A.P. RTE.	SECTION	COUNTY	TOTAL SHEETS	SHEET NO.
685	**	*	329	191
Cat.# 032750-02			CONTRACT NO. 68599	