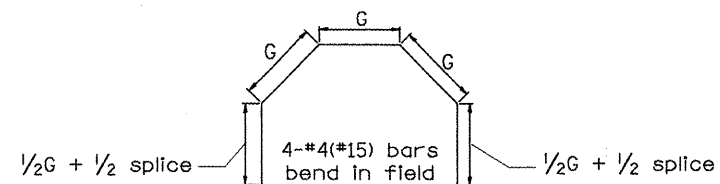


EXISTING BOX		EACH COLLAR								
W	H	A	B	D	t	CONC. COLLAR		REINFORCEMENT BARS		EXPANSION BOLT
						CU. YD. (m <sup>3</sup> )	g	L	LBS. (KG)	EACH
12(300)	PIPE	32 (810)	32 (810)	12 (300)	2(50)	0.18(0.14)	10 (254)	4'-7" (1.40m)	12(5.5)	4
18(450)	PIPE	39 (990)	39 (990)	18 (450)	2 1/2(65)	0.24(0.18)	12 3/4 (324)	5'-6" (1.68m)	15(7)	4
24(600)	PIPE	3'-10" (1.17m)	3'-10" (1.17m)	24 (600)	3(75)	0.30(0.23)	15 3/4 (400)	6'-6" (1.98m)	17(8)	4
24(600)	24(600)	4'-5" (1.35m)	4'-5" (1.35m)	30 (750)	3 1/2(90)	0.37(0.28)	18 3/4 (416)	7'-6" (2.29m)	20(9)	4
30(750)	30(750)	5'-0" (1.52m)	5'-0" (1.52m)	36 (900)	4(100)	0.45(0.34)	21 1/2 (546)	8'-5" (2.57m)	22.5(10)	8
36(900)	36(900)	5'-7" (1.7m)	5'-7" (1.7m)	42 (1050)	4 1/2(115)	0.50(0.38)	24 1/2 (622)	9'-5" (2.87m)	25(11)	10
42(1050)	42(1050)	6'-2" (1.88m)	6'-2" (1.88m)	48 (1200)	5(125)	0.61(0.47)	27 1/4 (692)	10'-4" (3.15m)	28(12.5)	10
48(1200)	48(1200)	6'-9" (2.06m)	6'-9" (2.06m)	54 (1350)	5 1/2(140)	0.80(0.61)	30 1/4 (768)	11'-4" (3.45m)	30(14)	10



**GENERAL NOTES**

1. The collar shall be constructed entirely of CLASS SI CONCRETE and in accordance with the applicable portions of Section 503 of the Standard Specifications. Reinforcement Bars shall conform to Section 508.
2. Expansion Bolts shall consist of approved Expansion Anchors, and 3/4(M20) Hook Bolts which conform to Section 1006.09. These Bolts shall extend at least 8(200) into the new Concrete.

All dimensions are in Inches (millimeters) unless otherwise noted.

QUANTITIES	
CALC. BY: _____	DATE: _____
CHECKED BY: _____	DATE: _____

QUANTITY CALCULATIONS ARE ON FILE AT THE DISTRICT 4 OFFICE, BUREAU OF PROJECT IMPLEMENTATION, DOCUMENTATION SECTION

01-01-97	RENUM. J-11.02, NEW REVISION BOX, REVISED	T.P.
10-16-06	REV. TO 2007 SPEC., REINF. BATS COL.	M.A.

STATE OF ILLINOIS  
DEPARTMENT OF TRANSPORTATION

PIPE CULVERT EXTENSION COLLAR (WITH END SECTION)

NOT TO SCALE

CADD STD. 542001-D4

F.A.P. RTE.	SECTION	COUNTY	TOTAL SHEETS	SHEET NO.
685	..	.	329	200
FED. ROAD DIST. NO. ILLINOIS FED. AID PROJECT			CONTRACT NO. 68599	