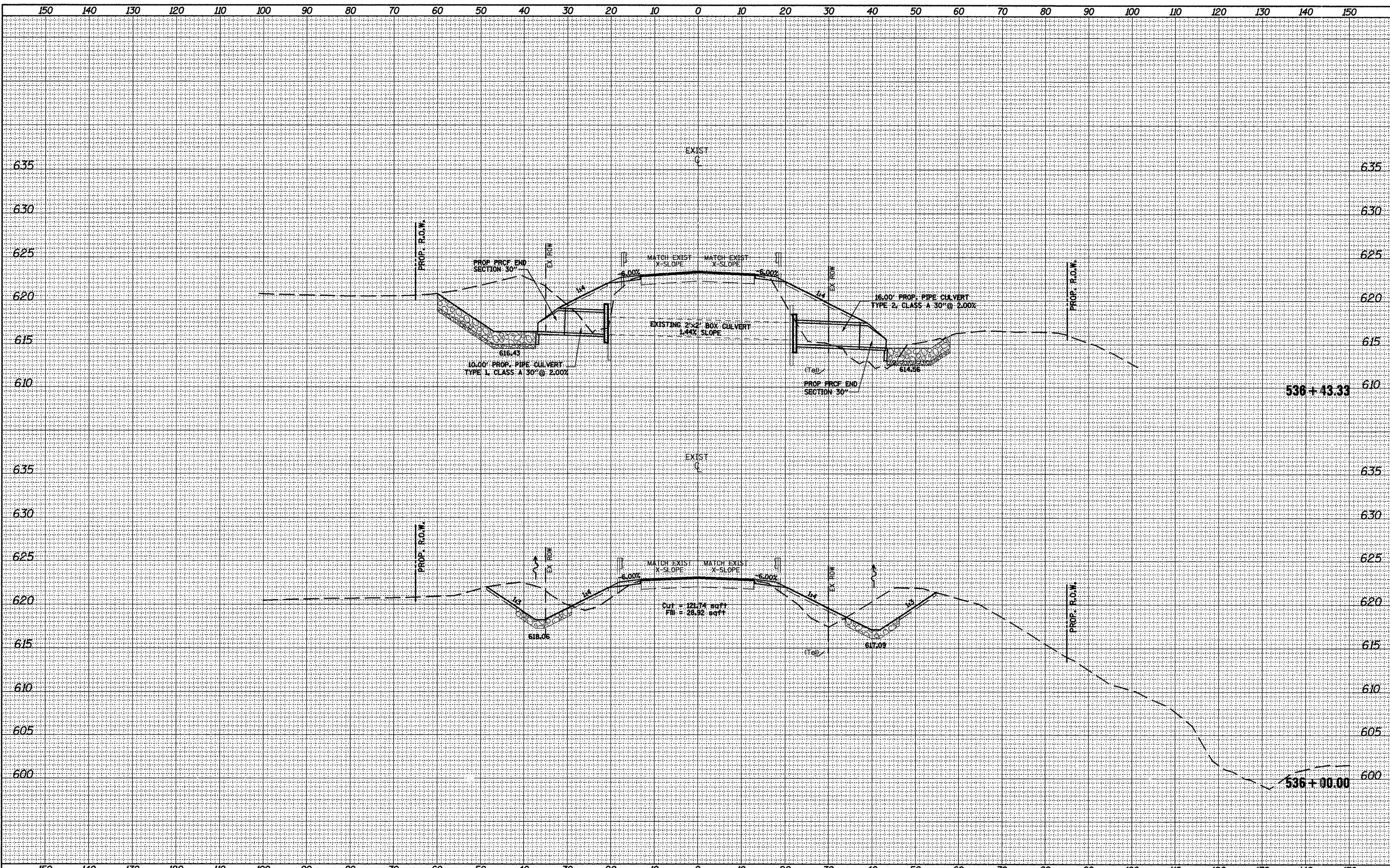


SURVEYED  
 PLOTTED  
 NOTE BOOK  
 TEMPLATE  
 AREAS CHECKED  
 NO.

SURVEYED  
 PLOTTED  
 NOTE BOOK  
 TEMPLATE  
 AREAS CHECKED  
 NO.



FILE NAME = xshet20-25opt2.dgn	USER NAME = crespole	DESIGNED -	REVISED -	<b>STATE OF ILLINOIS DEPARTMENT OF TRANSPORTATION</b>	<b>CROSS SECTIONS</b>	F.A.P. RTE. 685	SECTION ..	COUNTY ..	TOTAL SHEETS 329	SHEET NO. 294		
PLOT SCALE = 20.0000' / IN.	CHECKED -	REVISED -	SCALE:			SHEET NO. OF SHEETS	STA. 536+00.00 TO STA. 536+43.33	CONTRACT NO. 68599				
PLOT DATE = 4/8/2011	DATE -	REVISED -	ILLINOIS FED. AID PROJECT									
<small>** (37,38)RS-3,39RS-5;(38)1      • Fulton, McDonough</small>												