

**STATE OF ILLINOIS
DEPARTMENT OF TRANSPORTATION
DIVISION OF HIGHWAYS**

F.A.P. RTE.	SECTION	COUNTY	TOTAL SHEETS	SHEET NO.
*	**	***	16	1
		ILLINOIS	CONTRACT NO. 70895	

- * FAP 322 / FAP 315
- ** POSTING MITIGATION FY2011-2
- *** DEWITT / MCLEAN

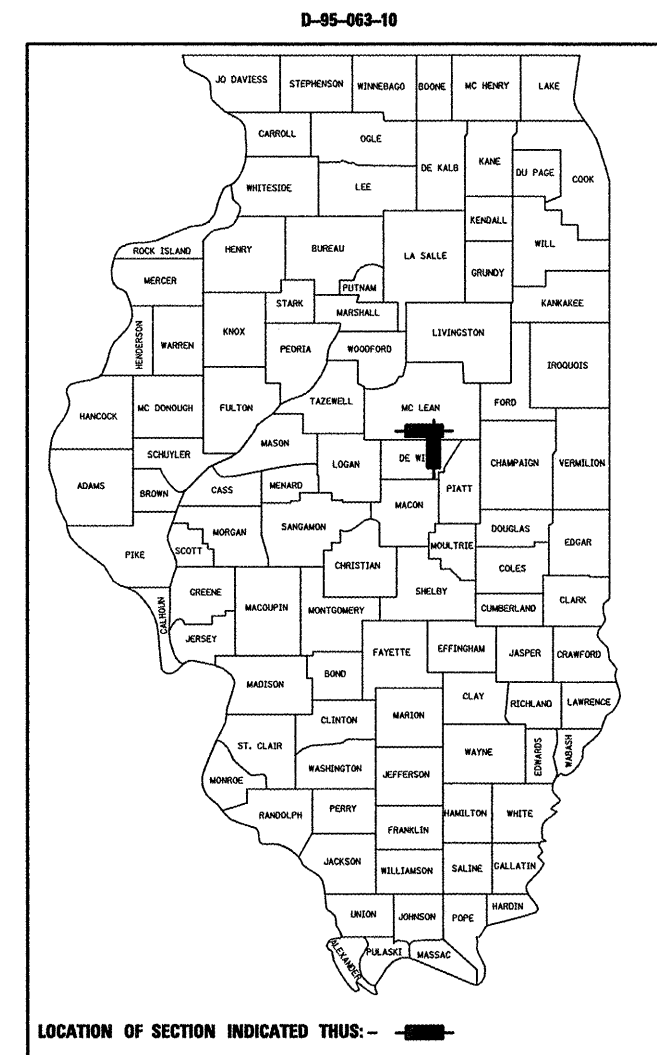
FOR INDEX OF SHEETS, SEE SHEET NO. 2
FOR SUMMARY OF QUANTITIES, SEE SHEET NO. 3

PROPOSED HIGHWAY PLANS

**FAP ROUTE 322 (US 51) & 315 (US 136)
SECTION POSTING MITIGATION FY2011-2**

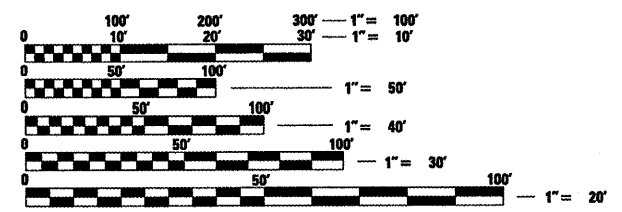
**DEWITT / MCLEAN COUNTY
VARIOUS LOCATIONS (KEYWAY REPAIRS)**

C-95-063-10



ADT:	
LOCATION #1:	3100 (2010)
LOCATION #2:	5350 (2010)

DESIGN DESIGNATION
NA

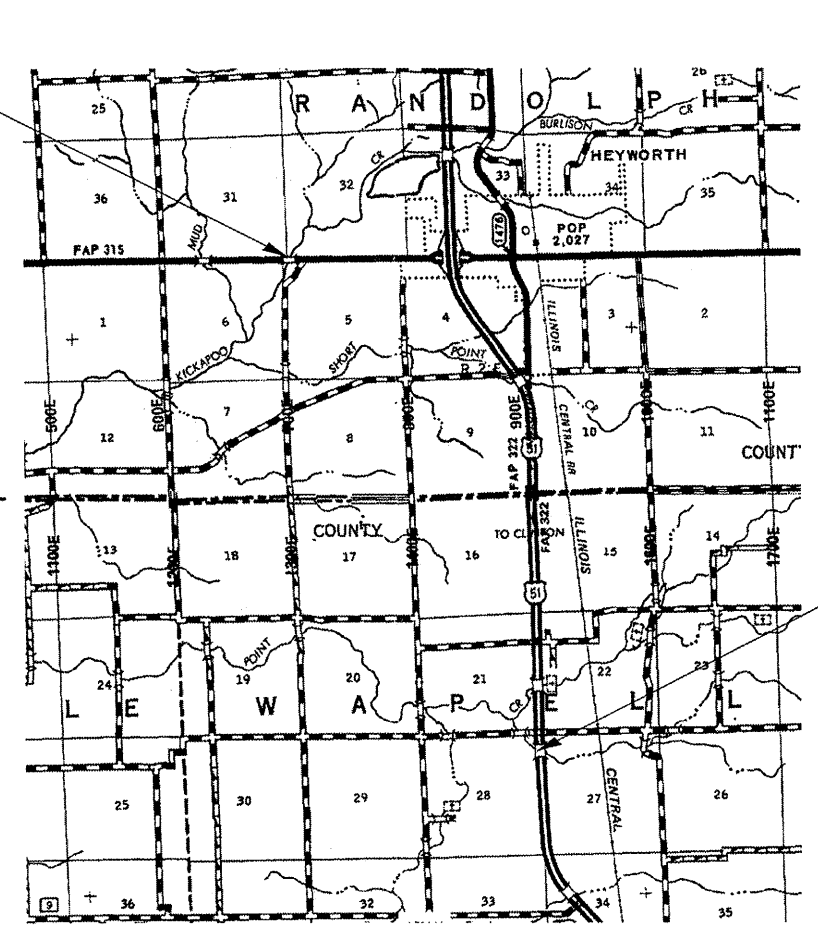


FULL SIZE PLANS HAVE BEEN PREPARED USING STANDARD ENGINEERING SCALES. REDUCED SIZED PLANS WILL NOT CONFORM TO STANDARD SCALES. IN MAKING MEASUREMENTS ON REDUCED PLANS, THE ABOVE SCALES MAY BE USED.

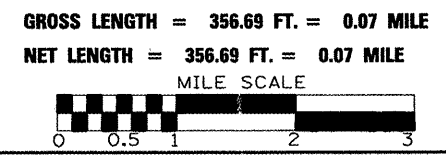
J.U.L.I.E.
JOINT UTILITY LOCATION INFORMATION FOR EXCAVATION
1-800-892-0123
OR 811 RANDOLPH AND WAPELLA TOWNSHIPS

PROJECT ENGINEER: JASON STULTS
PROJECT MANAGER: RUSTIN KEYS
PROJECT DESIGNER: JOE HOWELL
PHONE NO. : 217-465-4181
CONTRACT NO. 70895

S.N. 057-0093
LOCATION #2
FAP 315 (US 136)
STA. 428 + 16.72



S.N. 020-0047
LOCATION #1
FAP 322 (US 51 SB ONLY)
STA. 1437 + 53.04



STATE OF ILLINOIS
DEPARTMENT OF TRANSPORTATION
DIVISION OF HIGHWAYS

SUBMITTED 2/4 20 11

Joseph K. Conner
DEPUTY DIRECTOR OF HIGHWAYS, REGION ENGINEER

March 25 20 11
Scott E. Stitt, P.E.
ENGINEER OF DESIGN AND ENVIRONMENT

March 25 20 11
Christine M. Reed
DIRECTOR OF HIGHWAYS, CHIEF ENGINEER

**PRINTED BY THE AUTHORITY
OF THE STATE OF ILLINOIS**

INDEX OF SHEETS

SHEET NO.	DISCRIPTION
1	COVER SHEET
2	INDEX OF SHEETS, LISTS OF HIGHWAY STANDARDS, GENERAL NOTES
3	SUMMARY OF QUANTITIES
4	GENERAL PLANS, ELEVATION & REPAIR DETAIL, LOCATION 1
5	GENERAL PLANS, ELEVATION & REPAIR DETAIL, LOCATION 2
6	STAGE I CONSTRUCTION DETAIL, LOCATION 1
7	STAGE I CONSTRUCTION DETAIL, LOCATION 2
8	STAGE II CONSTRUCTION DETAIL, LOCATION 2
9	WATERPROOF MEMBRANE SYSTEM DETAIL
10 - 11	WIDTH RESTRICTION SIGNING DETAIL, LOCATION 1
12	WIDTH RESTRICTION SIGNING DETAIL, LOCATION 2
13 - 16	PAVEMENT MARKING AND MARKERS (RURAL & URBAN APPLICATIONS)

LIST OF HIGHWAY STANDARDS

STANDARD NO.	DESCRIPTION
000001-06	STANDARD SYMBOLS, ABBREVIATIONS AND PATTERNS
001006	DECIMAL OF AN INCH AND A FOOT
635011-02	REFLECTOR MARKER AND MOUNTING DETAILS
701301-04	LANE CLOSURE 2L, 2W SHORT TIME OPERATIONS
701311-03	LANE CLOSURE 2L, 2W MOVING OPERATIONS - DAY ONLY
701316-05	LANE CLOSURE, 2L, 2W, BRIDGE REPAIR, FOR SPEEDS ≥ 45 MPH
701400-05	APPROACH TO LANE CLOSURE, FREEWAY / EXPRESSWAY
701402-08	LANE CLOSURE, FREEWAY / EXPRESSWAY, WITH BARRIER
701406-06	LANE CLOSURE, FREEWAY / EXPRESSWAY, DAY OPERATIONS ONLY
701426-04	LANE CLOSURE, MULTILANE, INTERMITTANT OR MOVING OPER., FOR SPEEDS ≥ 45 MPH
701901-01	TRAFFIC CONTROL DEVICES
780001-02	TYPICAL PAVEMENT MARKINGS
781001-03	TYPICAL APPLICATIONS RAISED REFLECTIVE PAVEMENT MARKERS

GENERAL NOTES

G.N.-100
ENGLISH UNITS OF MEASUREMENT SHALL GOVERN OVER AND SUPERSEDE ANY METRIC UNITS SHOWN IN THIS CONTRACT. WHERE INCLUDED, METRIC UNITS ARE FOR INFORMATION ONLY.

G.N.-406
THE QUANTITIES INCLUDED IN THE PLANS FOR HOT-MIX ASPHALT RESURFACING ARE INTENDED TO GIVE THE COVERAGE SHOWN ON THE TYPICAL CROSS SECTIONS. IT IS NOT INTENDED TO INCREASE THE THICKNESS OF THE HOT-MIX ASPHALT MIXTURE IN ORDER TO USE ALL OF THE QUANTITIES INCLUDED IN THE CONTRACT.

G.N.-406H

MIXTURE REQUIREMENTS

THE FOLLOWING MIXTURE REQUIREMENTS ARE APPLICABLE FOR THIS PROJECT:

Location(s):	S.N. 057-0093 (FAP 315) & S.N.020-0047 (FAP 322)
Mixture Use(s):	HMA SURFACE COURSE, MIX "D", N 50
AC/PG:	64 - 22
RAP %: (Max)**	15%
Design Air Voids:	4.0% VOIDS @ N _{des} = 50
Mixture Composition: (Gradation Mixture)	IL 9.5
Friction Aggregate:	D

G.N.-609
PRIOR TO ROUTING TRAFFIC ONTO THE SHOULDERS AS SHOWN IN THE STAGING PLANS, THE CONTRACTOR SHALL SECURE THE GRATINGS ON SHOULDER INLETS AS DIRECTED BY THE ENGINEER. THIS WORK WILL BE PAID FOR ACCORDING TO ARTICLE 109.04.

SEE SPECIAL PROVISION "DECK SLAB REPAIR" FOR ADDITIONAL REQUIREMENTS PERTAINING TO HMA SURFACE REMOVAL (DECK).

THE EXISTING STRUCTURES HAVE BEEN FOUND TO CONTAIN NO ASBESTOS

NO COMMITMENTS

• FAP 322 / FAP 315
•• POSTING MITIGATION FY2011-2
••• DEWITT / MCLEAN

FILE NAME =	USER NAME = keysrb	DESIGNED - ---	REVISED - ---	STATE OF ILLINOIS DEPARTMENT OF TRANSPORTATION	INDEX OF SHEETS, LIST OF STANDARDS, & GENERAL NOTES	F.A.P. RTE.	SECTION	COUNTY	TOTAL SHEETS	SHEET NO.	
es:\pwork\pwork\keysrb\0248810\05708	PS-shr-Gennote.dgn	DRAWN - ---	REVISED - ---			*	**	***	16	2	
PLOT SCALE = 40,0000' / IN.	CHECKED - ---	REVISD - ---				CONTRACT NO. 70895					
PLOT DATE = 2/4/2011	DATE - ---	REVISED - ---				FED. ROAD DIST. NO. _ ILLINOIS FED. AID PROJECT					

SUMMARY OF QUANTITIES

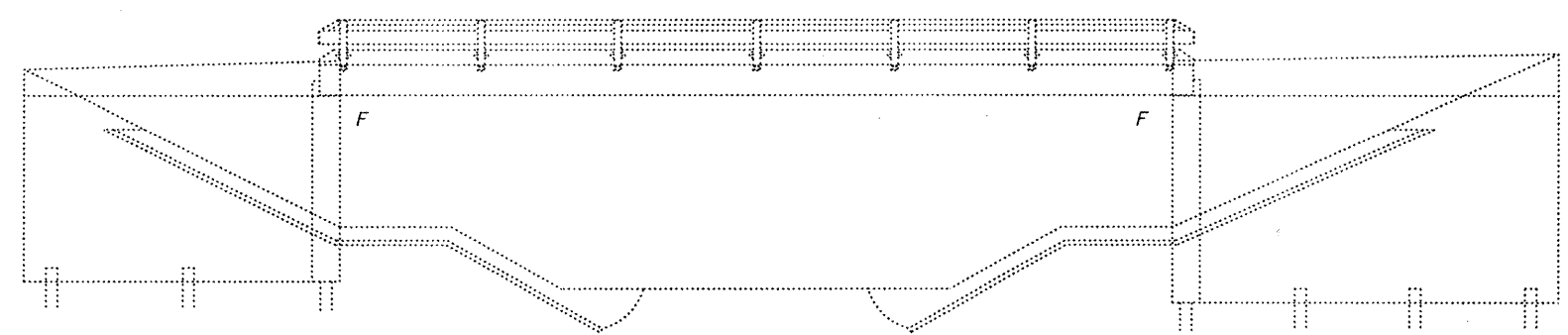
LOCATION OF WORK:	DEWITT COUNTY	MC LEAN COUNTY
	LOCATION # 1	LOCATION # 2
	FAP 322 (US 51)	FAP 315 (ILL 136)
	S.N. 020-0047	S.N. 057-0093
	MINOR STRUCTURE REPAIR	MINOR STRUCTURE REPAIR
	RURAL	RURAL
FUNDING:	100% STATE	100% STATE
CONSTRUCTION TYPE CODE:	0014	0014

CODE NO.	DESCRIPTION	UNIT	TOTAL QUANTITY	QUANTITY	QUANTITY
40603335	HOT - MIX ASPHALT SURFACE COURSE, MIX "D", N50	TON	12.0	5.0	7.0
58100200	WATERPROOFING MEMBRANE SYSTEM	SQ YD	71.0	29.0	42.0
58300100	PORTLAND CEMENT MORTAR FAIRING COURSE	FOOT	316.0	127.0	189.0
67100100	MOBILIZATION	L SUM	1.0	0.5	0.5
70100100	TRAFFIC CONTROL AND PROTECTION, STANDARD 701316	EACH	1.0		1.0
70100207	TRAFFIC CONTROL AND PROTECTION, STANDARD 701402	EACH	1.0	1.0	
70100700	TRAFFIC CONTROL AND PROTECTION, STANDARD 701406	L SUM	1.0	1.0	
70106500	TEMPORARY BRIDGE TRAFFIC SIGNALS	EACH	1.0		1.0
* 78001110	PAINT PAVEMENT MARKING - LINE 4"	FOOT	980.0	390.0	590.0
X7040442	TEMPORARY WATER FILLED BARRIER	FOOT	325.0	325.0	
* X7200201	WIDTH RESTRICTION SIGNING	L SUM	1.0	1.0	
Z0004556	HOT - MIX ASPHALT SURFACE REMOVAL (DECK)	SQ YD	71.0	29.0	42.0
Z0030250	IMPACT ATTENUATOR, TEMPORARY (NON-REDIRECTIVE), TEST LEVEL 3	EACH	1.0	1.0	
Z0032700	KEYWAY REPAIR	FOOT	316.0	127.0	189.0

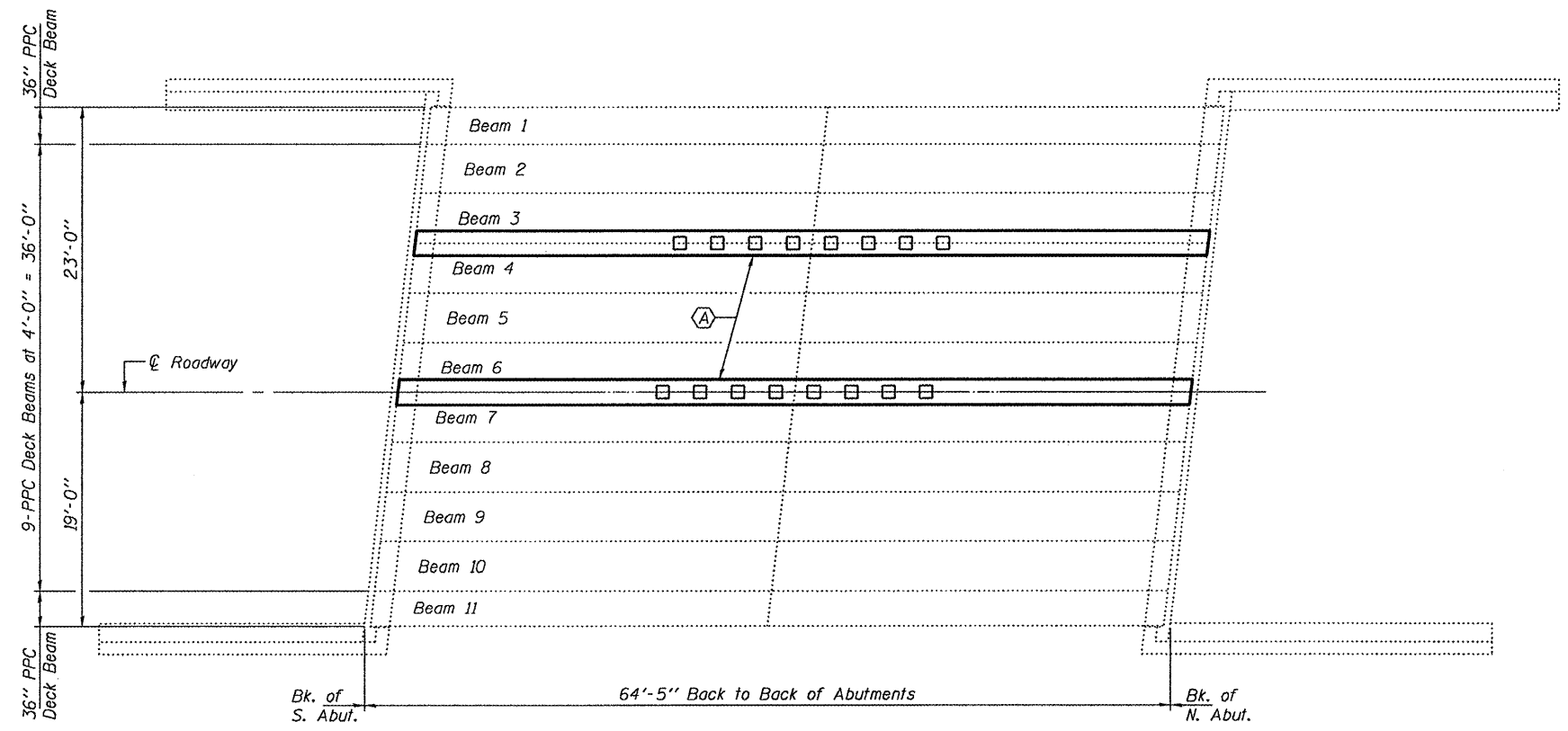
* SPECIALTY ITEM

* FAP 322 / FAP 315
 ** POSTING MITIGATION FY2011-2
 *** DEWITT / MCLEAN

FILE NAME =	USER NAME = keysrb	DESIGNED -	REVISED -	STATE OF ILLINOIS DEPARTMENT OF TRANSPORTATION	SUMMARY OF QUANTITIES	F.A.P. RTE.	SECTION	COUNTY	TOTAL SHEETS	SHEET NO.
ct:\pwork\pwork\keysrb\d0248810\05708	95-shr-500.dgn	DRAWN -	REVISED -			.	**	***	16	3
	PLOT SCALE = 40.0000" / IN.	CHECKED -	REVISED -		SCALE: -----	SHEET NO. OF SHEETS		STA. TO STA.		FED. ROAD DIST. NO. ILLINOIS FED. AID PROJECT
	PLOT DATE = 2/4/2011	DATE -	REVISED -							CONTRACT NO. 70895



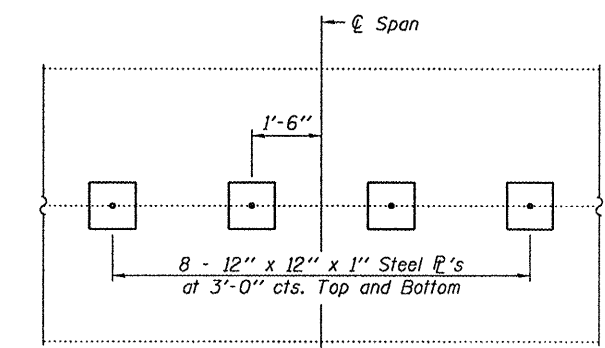
ELEVATION



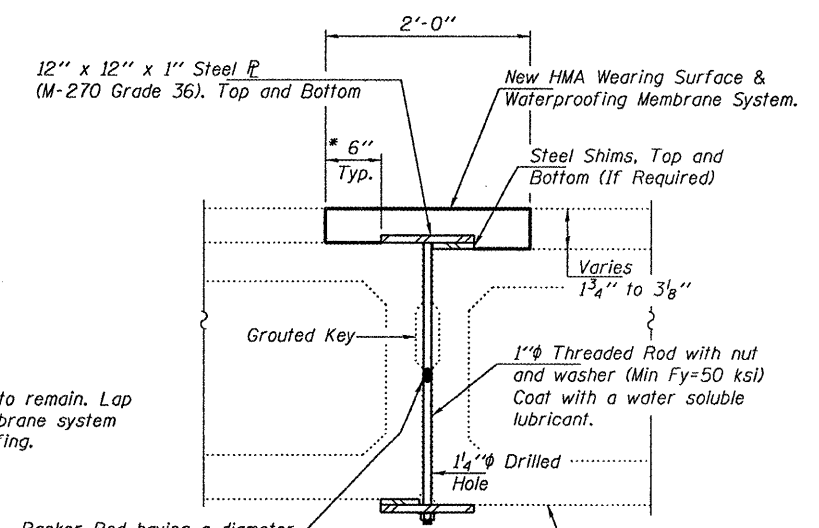
PLAN

(A) - Shear Key Clamping Device Installation & Keyway Repair

GENERAL NOTES
 All structural steel shall conform to AASHTO Classification M-270 Gr. 36, unless otherwise noted.
 Plan dimensions and details relative to existing plans are subject to nominal construction variations. The Contractor shall field verify existing dimensions and details affecting new construction and make necessary approved adjustments prior to construction or ordering of materials. Such variations shall not be cause for additional compensation for a change in scope of the work, however, the Contractor will be paid for the quantity actually furnished at the unit price bid for the work.
 The shear key clamping devices shall be galvanized after shop fabrication according to AASHTO M111 and ASTM 385.



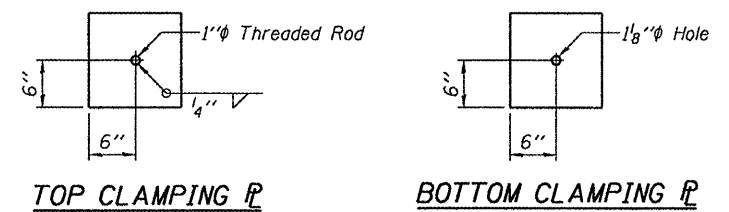
PLAN



SHEAR KEY CLAMPING DEVICE

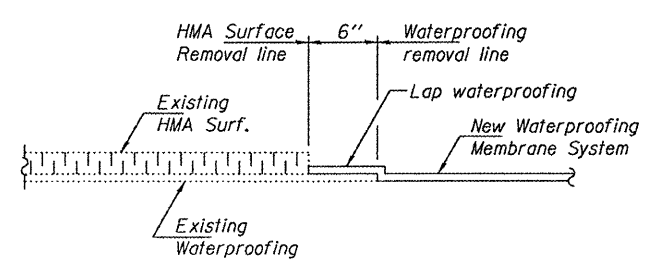
Cost included with Keyway Repair
 (16 Required)

* Existing waterproofing to remain. Lap new waterproofing membrane system with existing waterproofing.



SHEAR KEY CLAMPING CONSTRUCTION SEQUENCE

1. Install 8 shear key clamping devices (4 on each side of \varnothing span).
2. Install backer rod in open joint.
3. Grout shear keys and cure for a minimum of 24 hours.



WATERPROOFING TREATMENT

TOTAL BILL OF MATERIAL

ITEM	UNIT	QUANTITY
Hot-Mix Asphalt Surface Course, Mix "D", N50	Tons	5.0
HMA Surface Removal (Deck)	Sq. Yd.	29
Waterproofing Membrane System	Sq. Yd.	29
PC Mortar Fairing Course	Foot	127
Keyway Repair	Foot	127

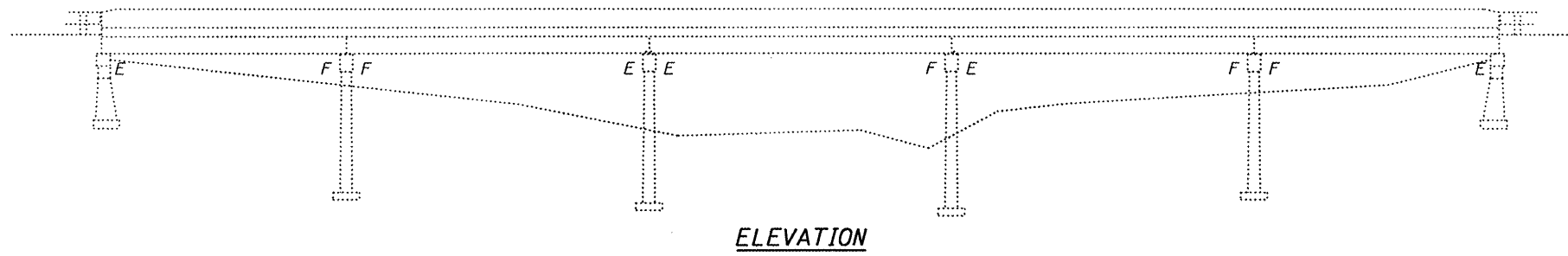


DESIGNED - <i>David Puzey</i>	EXAMINED - <i>Jan F. [Signature]</i>	DATE - MARCH 14, 2011
CHECKED - <i>[Signature]</i>	PASSED - <i>[Signature]</i>	
DRAWN - Kyle M. Steffen	ACTING ENGINEER OF STRUCTURAL SERVICES	
CHECKED - <i>[Signature]</i>	ACTING ENGINEER OF BRIDGES AND STRUCTURES	

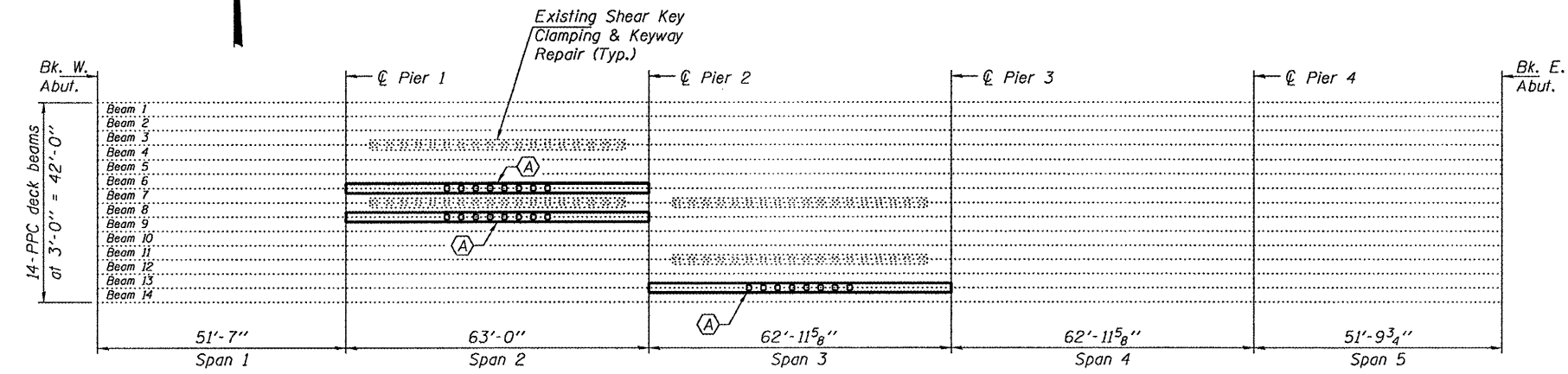
STATE OF ILLINOIS
DEPARTMENT OF TRANSPORTATION

GENERAL PLAN, ELEVATION & REPAIR DETAILS
SN 020-0047
 SHEET NO. 1 OF 1 SHEETS

F.A.P. RTE. 322	SECTION Posting Mitigation FY2011-2	COUNTY DeWitt	TOTAL SHEETS 16	SHEET NO. 4
ILLINOIS FED. AID PROJECT			CONTRACT NO. 70895	



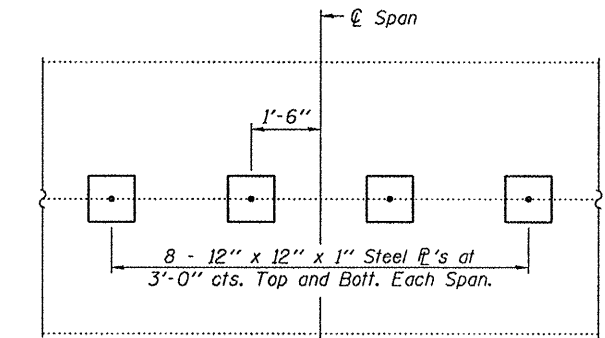
ELEVATION



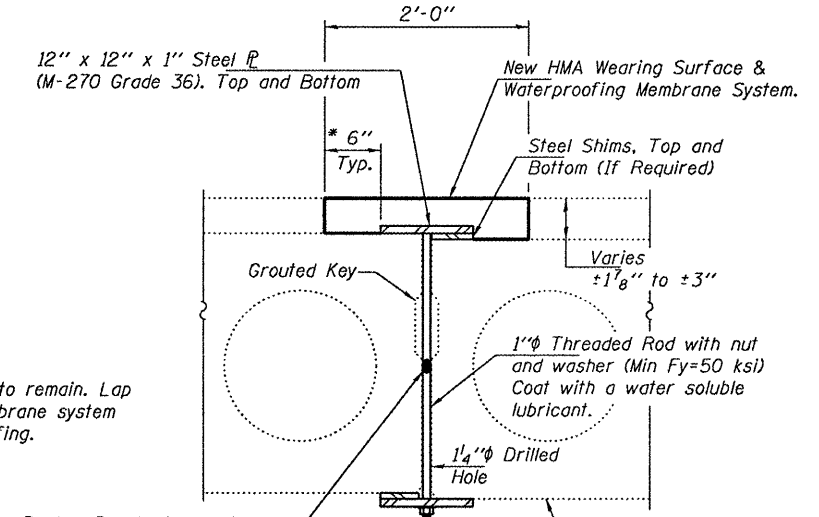
PLAN

(A) - Shear Key Clamping Device Installation & Keyway Repair

GENERAL NOTES
 All structural steel shall conform to AASHTO Classification M-270 Gr. 36, unless otherwise noted.
 Plan dimensions and details relative to existing plans are subject to nominal construction variations. The Contractor shall field verify existing dimensions and details affecting new construction and make necessary approved adjustments prior to construction or ordering of materials. Such variations shall not be cause for additional compensation for a change in scope of the work, however, the Contractor will be paid for the quantity actually furnished at the unit price bid for the work.
 The shear key clamping devices shall be galvanized after shop fabrication according to AASHTO M111 and ASTM 385.



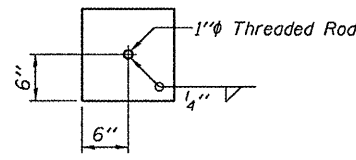
PLAN



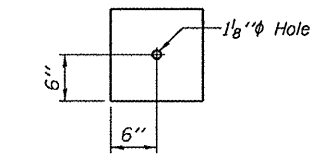
SHEAR KEY CLAMPING DEVICE

Cost included with Keyway Repair (24 Required)

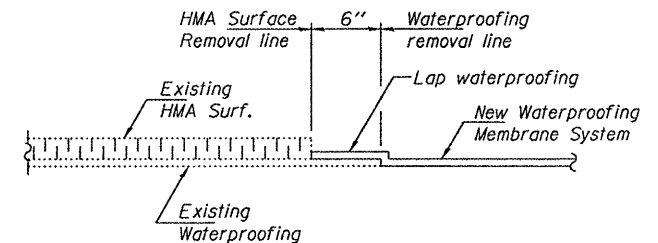
* Existing waterproofing to remain. Lap new waterproofing membrane system with existing waterproofing.



TOP CLAMPING P



BOTTOM CLAMPING P



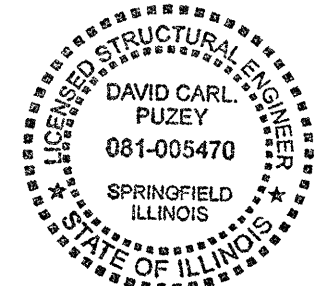
WATERPROOFING TREATMENT

SHEAR KEY CLAMPING CONSTRUCTION SEQUENCE

1. Install 8 shear key clamping devices (4 on each side of \bar{C} span).
2. Install backer rod in open joint.
3. Grout shear keys and cure for a minimum of 24 hours.

TOTAL BILL OF MATERIAL

ITEM	UNIT	QUANTITY
Hot-Mix Asphalt Surface Course, Mix "D", N50	Tons	7.0
HMA Surface Removal (Deck)	Sq. Yd.	42
Waterproofing Membrane System	Sq. Yd.	42
PC Mortar Fairing Course	Foot	189
Keyway Repair	Foot	189



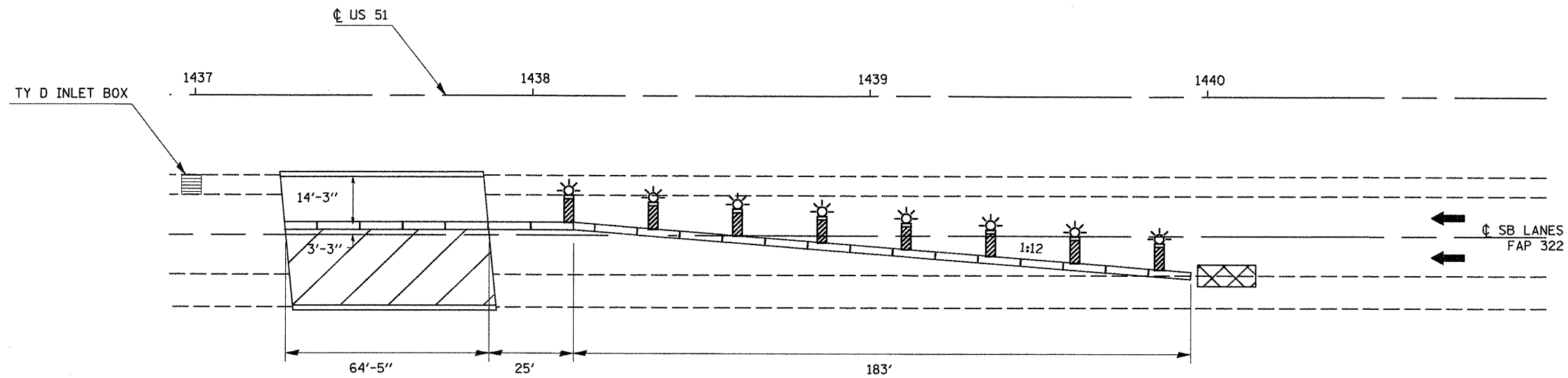
DESIGNED - <i>David Carl Puzey</i>	EXAMINED - <i>Jan F. [Signature]</i>	DATE - MARCH 14, 2011
CHECKED - <i>Kyle M. Steffen</i>	PASSED - <i>[Signature]</i>	
DRAWN - <i>ADY</i>		
CHECKED - <i>ADY</i>		

STATE OF ILLINOIS
 DEPARTMENT OF TRANSPORTATION

GENERAL PLAN, ELEVATION & REPAIR DETAILS
 SN 057-0093
 SHEET NO. 1 OF 1 SHEETS

F.A.P. RTE. 315	SECTION Posting Mitigation	COUNTY McLEAN	TOTAL SHEETS 16	SHEET NO. 5
FY2011-2		CONTRACT NO. 70895		
ILLINOIS FED. AID PROJECT				

STAGE CONSTRUCTION DETAIL LOCATION #1






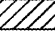

NOTES

ALL DETAILS NOT SHOWN ARE TO BE PER THE REQUIREMENTS OF TC&P STDS. 701400 AND 701402.

FOR ADDITIONAL TRAFFIC CONTROL DETAILS, SEE THE TRAFFIC CONTROL PLAN IN THE CONTRACT PROVISIONS.

THE COST OF FURNISHING, ERECTING, MAINTAINING, AND REMOVING THE VERTICAL PANELS WITH LIGHTS SHALL BE CONSIDERED INCLUDED IN THE TC&P STD. 701402 ITEM.

LEGEND

-  VERTICAL PANELS WITH LIGHT @ 25' CENTER (4 EACH STAGE)
-  TRAFFIC
-  TEMPORARY WATER FILLED BARRIER
-  WORK AREA
-  TEMPORARY IMPACT ATTENUATOR

* FAP 322 / FAP 315
 ** POSTING MITIGATION FY2011-2
 *** DEWITT / MCLEAN

FILE NAME = c:\pw_work\pwsdot\keyarb\d248610\05708	USER NAME = keyarb 5-shd-Detail.dgn	DESIGNED - GMS	REVISED -
		DRAWN - GMS	REVISED -
	PLOT SCALE = 40,000/1" / IN.	CHECKED -	REVISED -
	PLOT DATE = 2/4/2011	DATE -	REVISED -

**STATE OF ILLINOIS
DEPARTMENT OF TRANSPORTATION**

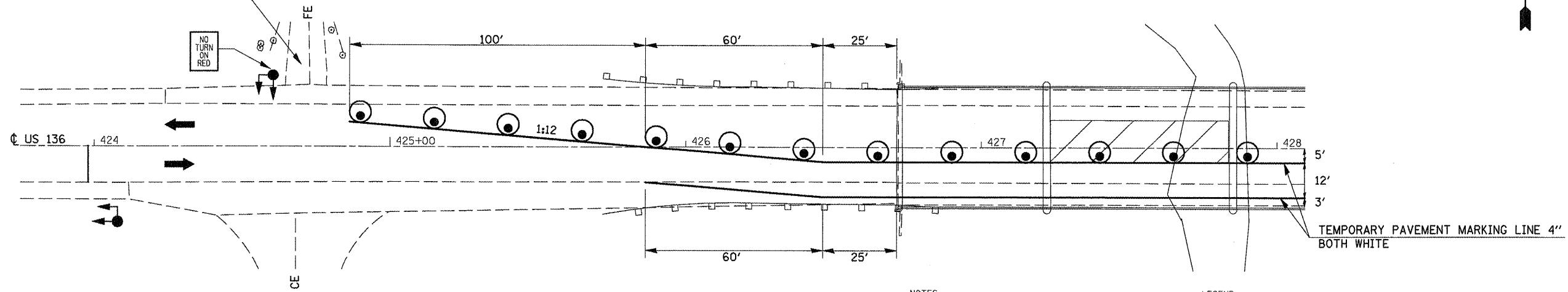
**STAGE CONSTRUCTION DETAIL
S.N. 020-0047**

SCALE: SHEET NO. OF SHEETS STA. TO STA.

F.A.P. RTE.	SECTION	COUNTY	TOTAL SHEETS	SHEET NO.
*	**	***	16	6
CONTRACT NO. 70895				
FED. ROAD DIST. NO. ILLINOIS FED. AID PROJECT				

STAGE I CONSTRUCTION DETAIL LOCATION #2

CLOSE THIS ENTRANCE FOR PROJECT DURATION
USE ALTERNATE ENTRANCE TO THE WEST



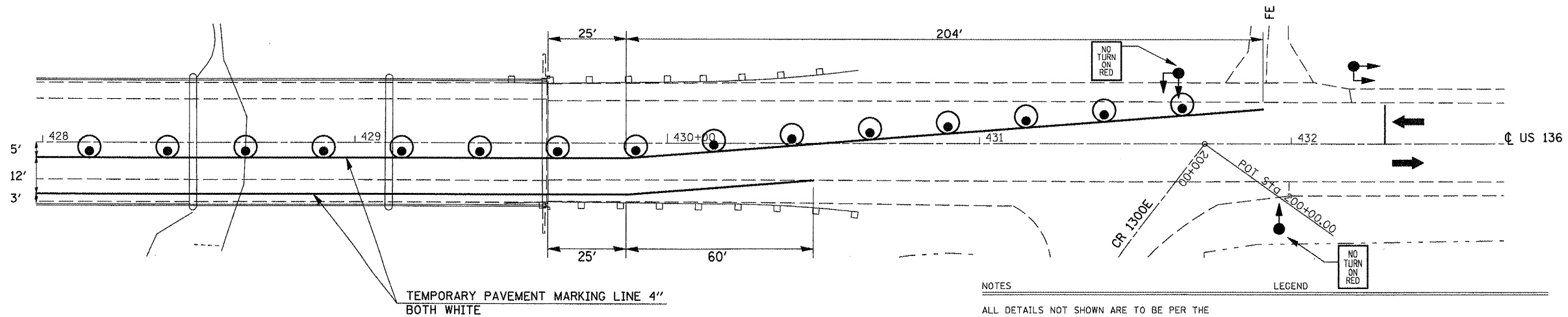
NOTES

ALL DETAILS NOT SHOWN ARE TO BE PER THE REQUIREMENTS OF TC&P STD. 701316.
FOR ADDITIONAL TRAFFIC CONTROL DETAILS, SEE THE TRAFFIC CONTROL PLAN IN THE CONTRACT PROVISIONS.

LEGEND

- VERTICAL PANELS WITH LIGHT @ 25' CENTER (4 EACH STAGE)
- TRAFFIC
- TEMPORARY TRAFFIC SIGNAL
- WORK AREA

STAGE I CONSTRUCTION DETAIL LOCATION #2



NOTES

ALL DETAILS NOT SHOWN ARE TO BE PER THE REQUIREMENTS OF TC&P STD. 701316.
FOR ADDITIONAL TRAFFIC CONTROL DETAILS, SEE THE TRAFFIC CONTROL PLAN IN THE CONTRACT PROVISIONS.

LEGEND

- DRUM W/ STEADY BURNING LIGHT
- TRAFFIC
- TEMPORARY TRAFFIC SIGNAL
- WORK AREA

• FAP 322 / FAP 315
•• POSTING MITIGATION FY2011-2
••• DEWITT / MCLEAN

FILE NAME =	USER NAME = keys-b	DESIGNED -	REVISED -
es:\pw\work\pwsdot\keys-b\d0248810\05708	5-shd-Details.dgn	DRAWN -	REVISED -
PLOT SCALE = 40.0001' / IN.	CHECKED -	REVISED -	REVISED -
PLOT DATE = 2/4/2011	DATE -	REVISED -	REVISED -

**STATE OF ILLINOIS
DEPARTMENT OF TRANSPORTATION**

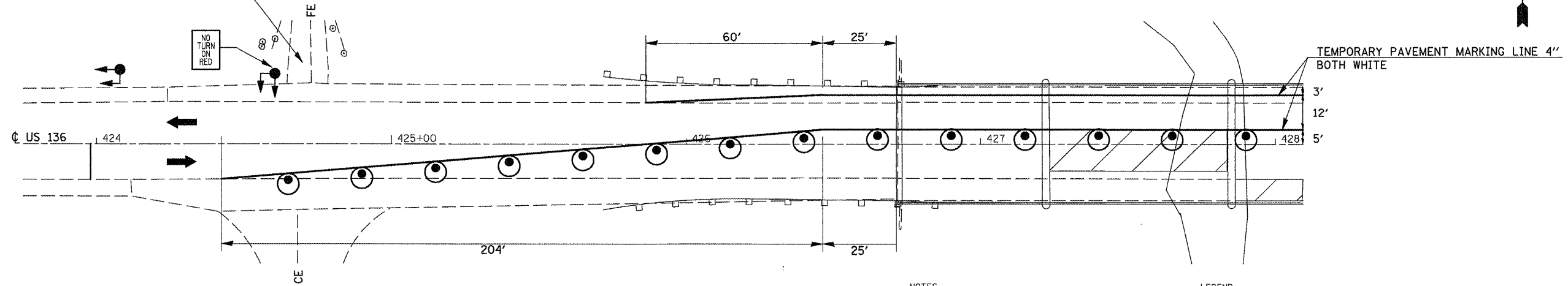
**STAGE I CONSTRUCTION DETAIL
LOCATION #2**

SCALE: SHEET NO. OF SHEETS STA. TO STA.

F.A.P. RTE.	SECTION	COUNTY	TOTAL SHEETS	SHEET NO.
•	••	•••	16	7
CONTRACT NO. 70895				
ILLINOIS FED. AID PROJECT				

STAGE II CONSTRUCTION DETAIL LOCATION #2

CLOSE THIS ENTRANCE FOR PROJECT DURATION
USE ALTERNATE ENTRANCE TO THE WEST



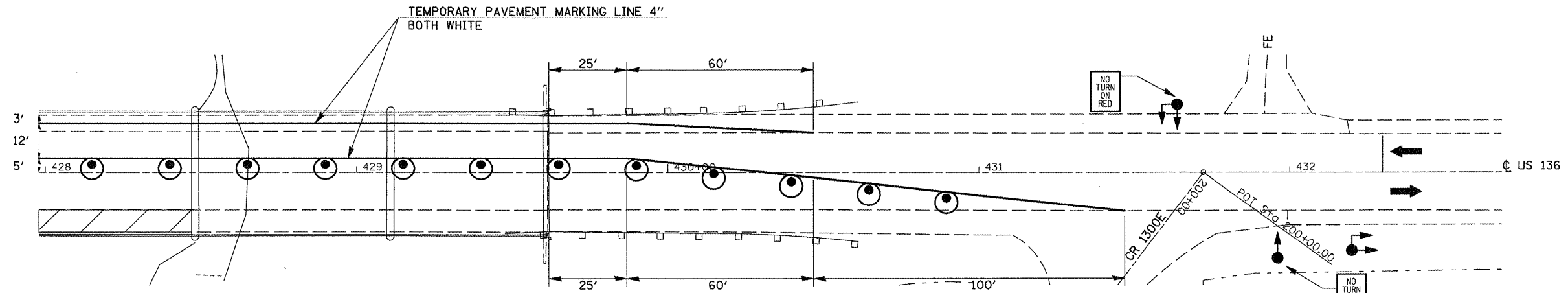
NOTES

ALL DETAILS NOT SHOWN ARE TO BE PER THE REQUIREMENTS OF TC&P STD. 701316.
FOR ADDITIONAL TRAFFIC CONTROL DETAILS, SEE THE TRAFFIC CONTROL PLAN IN THE CONTRACT PROVISIONS.

LEGEND

- DRUM W/ STEADY BURNING LIGHT
- TRAFFIC
- TEMPORARY TRAFFIC SIGNAL
- WORK AREA

STAGE II CONSTRUCTION DETAIL LOCATION #2



NOTES

ALL DETAILS NOT SHOWN ARE TO BE PER THE REQUIREMENTS OF TC&P STD. 701316.
FOR ADDITIONAL TRAFFIC CONTROL DETAILS, SEE THE TRAFFIC CONTROL PLAN IN THE CONTRACT PROVISIONS.

LEGEND

- DRUM W/ STEADY BURNING LIGHT
- TRAFFIC
- TEMPORARY TRAFFIC SIGNAL
- WORK AREA

• FAP 322 / FAP 315
•• POSTING MITIGATION FY2011-2
••• DEWITT / MCLEAN

FILE NAME =	USER NAME = keyarb	DESIGNED -	REVISED -
ct:\pw\work\pwwdot\keyarb\d248810\05700	5-sht-Details.dgn	DRAWN -	REVISED -
	PLOT SCALE = 48.0001' / IN.	CHECKED -	REVISED -
	PLOT DATE = 2/4/2011	DATE -	REVISED -

**STATE OF ILLINOIS
DEPARTMENT OF TRANSPORTATION**

**STAGE II CONSTRUCTION DETAIL
LOCATION #2**

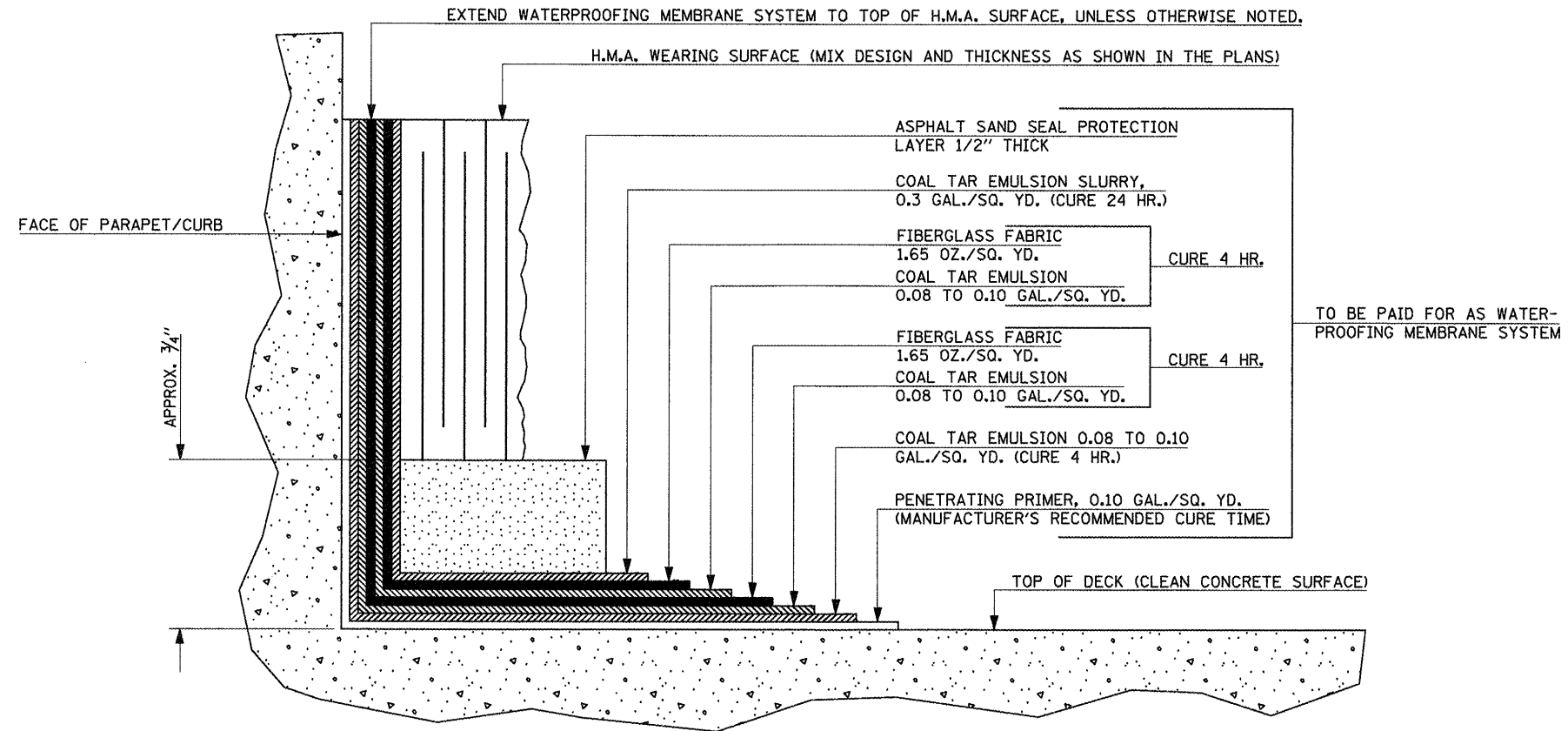
SCALE: SHEET NO. OF SHEETS STA. TO STA.

F.A.P. RTE.	SECTION	COUNTY	TOTAL SHEETS	SHEET NO.
•	••	•••	16	8
CONTRACT NO. 70895				
ILLINOIS FED. AID PROJECT				

WATERPROOFING MEMBRANE SYSTEM

S.N. 020-0047

S.N. 057-0093



NOTES

THIS DETAIL HAS BEEN INCLUDED TO ILLUSTRATE THE ASSOCIATED LAYERS AND CURE TIMES NECESSARY FOR THE PLACEMENT OF THE WATERPROOFING MEMBRANE SYSTEM. THIS DETAIL SHALL SUPPLEMENT, NOT SUPERSEDE, SECTION 581 OF THE STANDARD SPECIFICATIONS.

• FAP 322 / FAP 315
 •• POSTING MITIGATION FY2011-2
 ••• DEWITT / MCLEAN

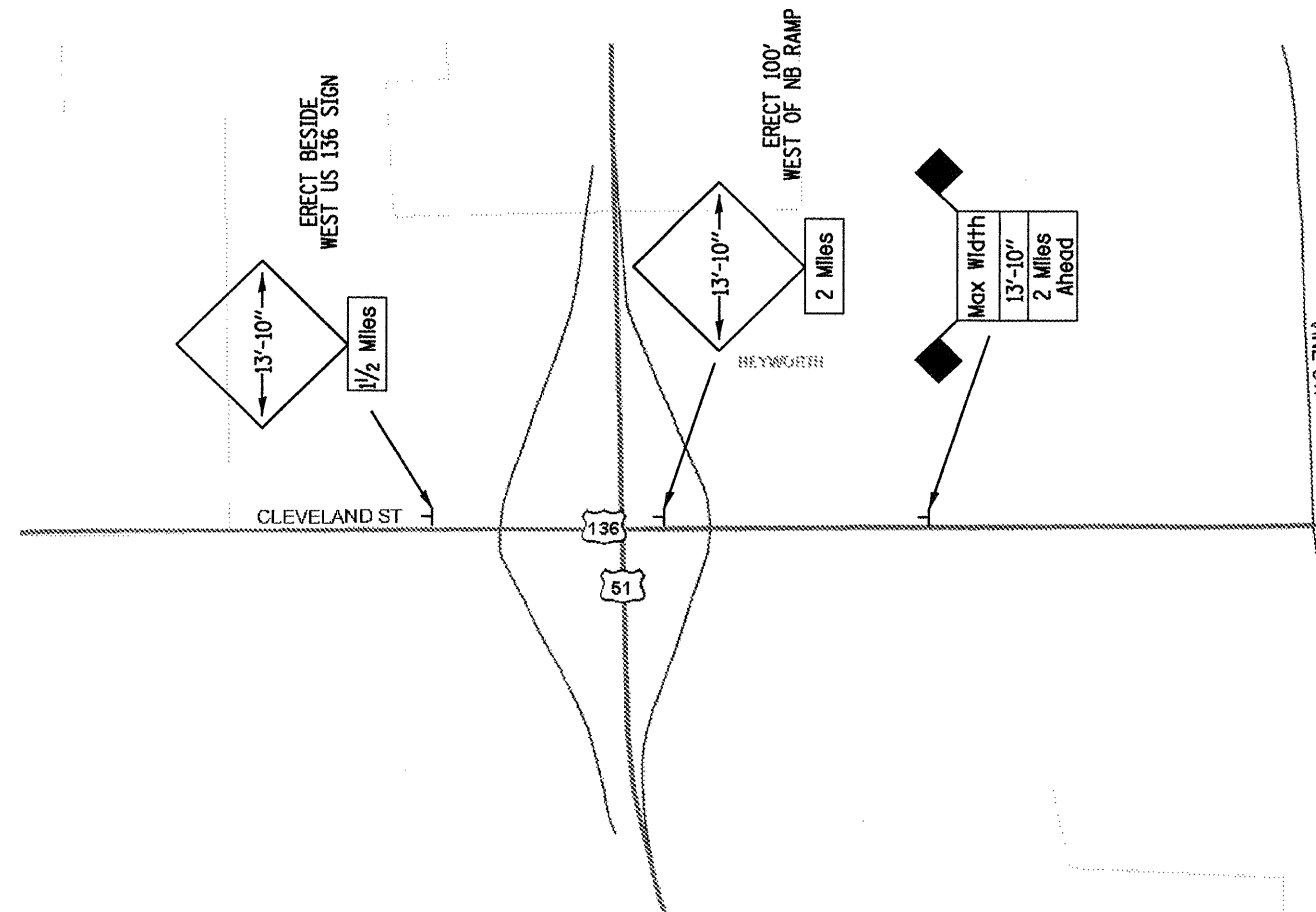
FILE NAME =	USER NAME = keyarb	DESIGNED - GMS	REVISED -
c:\pw\work\pwidot\keyarb\d0248810\DE708	5-shit-Details.dgn	DRAWN - GMS	REVISED -
	PLOT SCALE = 48.0001' / IN.	CHECKED -	REVISED -
	PLOT DATE = 2/4/2011	DATE -	REVISED -

**STATE OF ILLINOIS
DEPARTMENT OF TRANSPORTATION**

**WATERPROOFING MEMBRANE SYSTEM
S.N. 020-0047 & S.N. 057-0093**

F.A.P. RTE.	SECTION	COUNTY	TOTAL SHEETS	SHEET NO.
*	**	***	16	9
CONTRACT NO. 70895				
SCALE:		SHEET NO. OF SHEETS		STA. TO STA.
FED. ROAD DIST. NO.		ILLINOIS FED. AID PROJECT		

WIDTH RESTRICTION DETAIL US 136



* FAP 322 / FAP 315
 ** POSTING MITIGATION FY2011-2
 *** DEWITT / MCLEAN

FILE NAME =	USER NAME = keyarb	DESIGNED - GMS	REVISED -
c:\pwwork\pwwork\keyarb\d0248810\0570885-sht-Details.dgn		DRAWN - GMS	REVISED -
		CHECKED -	REVISED -
		DATE -	REVISED -

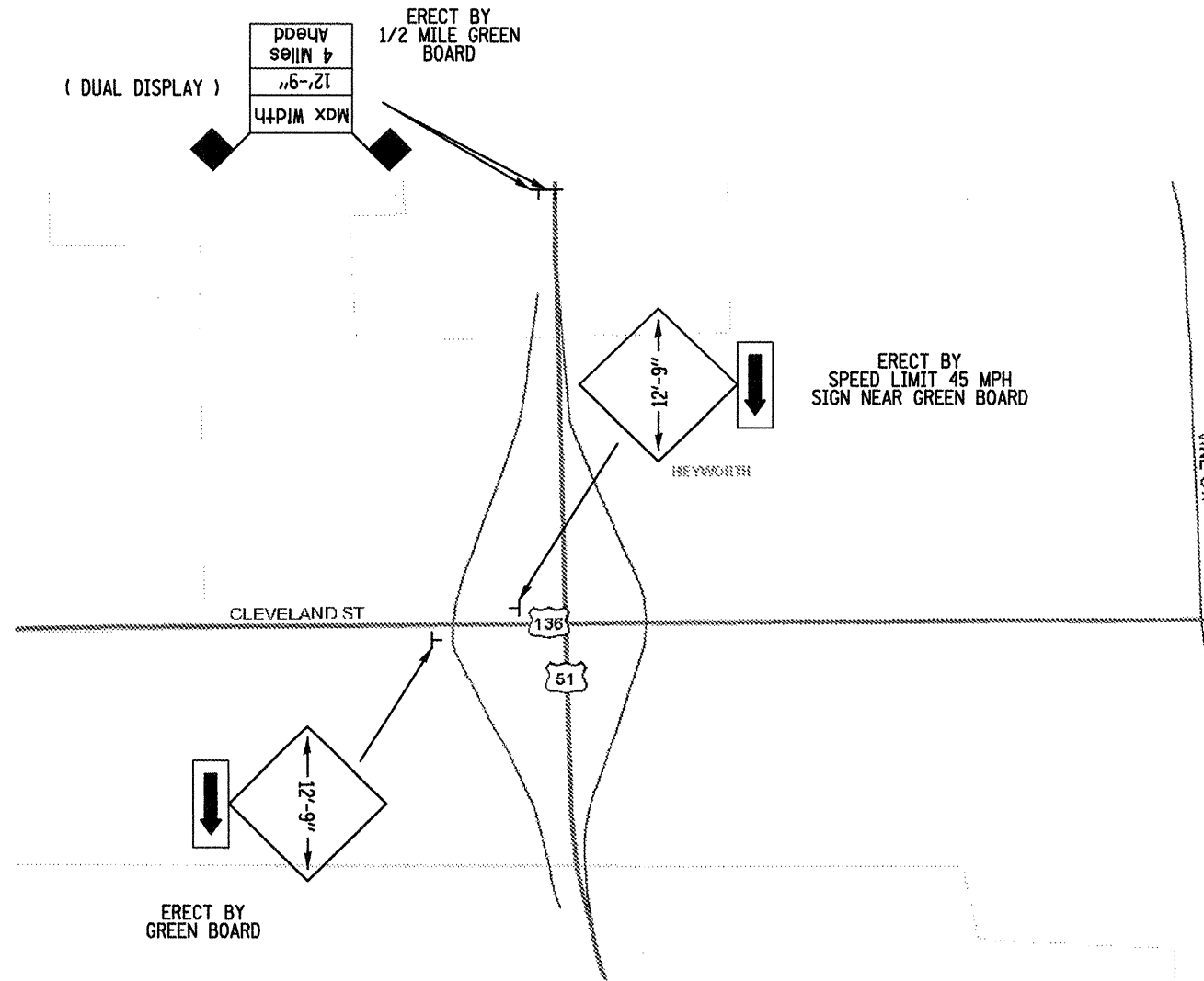
**STATE OF ILLINOIS
DEPARTMENT OF TRANSPORTATION**

WIDTH RESTRICTION DETAIL

SCALE: SHEET NO. OF SHEETS STA. TO STA.

F.A.P. RTE.	SECTION	COUNTY	TOTAL SHEETS	SHEET NO.
.	**	***	16	10
CONTRACT NO. 70895				
FED. ROAD DIST. NO. ILLINOIS FED. AID PROJECT				

WIDTH RESTRICTION DETAIL US 51



* FAP 322 / FAP 315
 ** POSTING MITIGATION FY2011-2
 *** DEWITT / MCLEAN

FILE NAME =	USER NAME = keyar-b	DESIGNED - GMS	REVISED -
cd:\pwwork\pwwork\keyar-b\0248810\0578815-sht-Detail.dgn		DRAWN - GMS	REVISED -
	PLOT SCALE = 48.0001' / IN.	CHECKED -	REVISED -
	PLOT DATE = 2/4/2011	DATE -	REVISED -

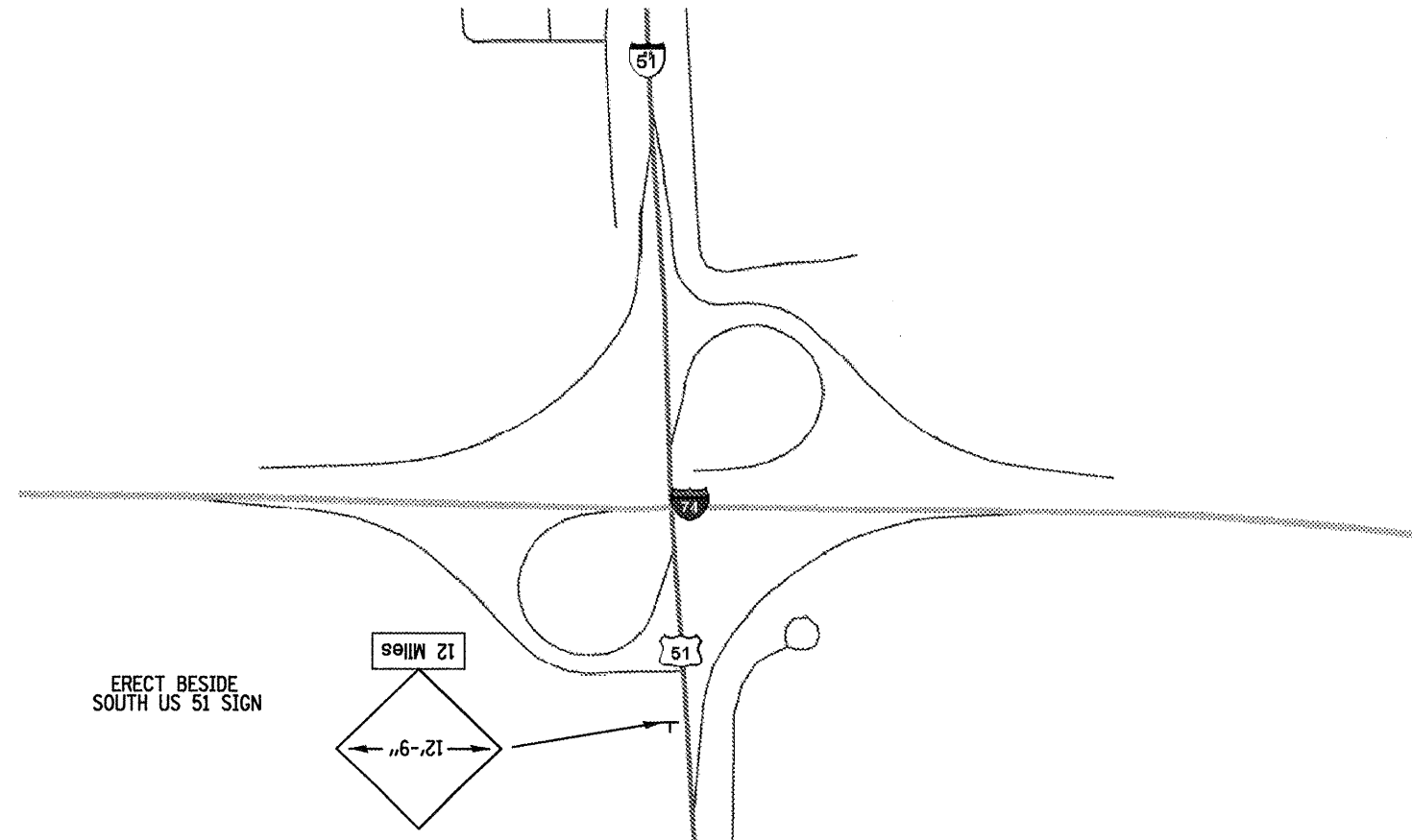
**STATE OF ILLINOIS
DEPARTMENT OF TRANSPORTATION**

WIDTH RESTRICTION DETAIL

SCALE: SHEET NO. OF SHEETS STA. TO STA.

F.A.P. RTE.	SECTION	COUNTY	TOTAL SHEETS	SHEET NO.
*	**	***	16	11
CONTRACT NO. 70895				
FED. ROAD DIST. NO. ILLINOIS FED. AID PROJECT				

WIDTH RESTRICTION DETAIL US 51



• FAP 322 / FAP 315
 ** POSTING MITIGATION FY2011-2
 *** DEWITT / MCLEAN

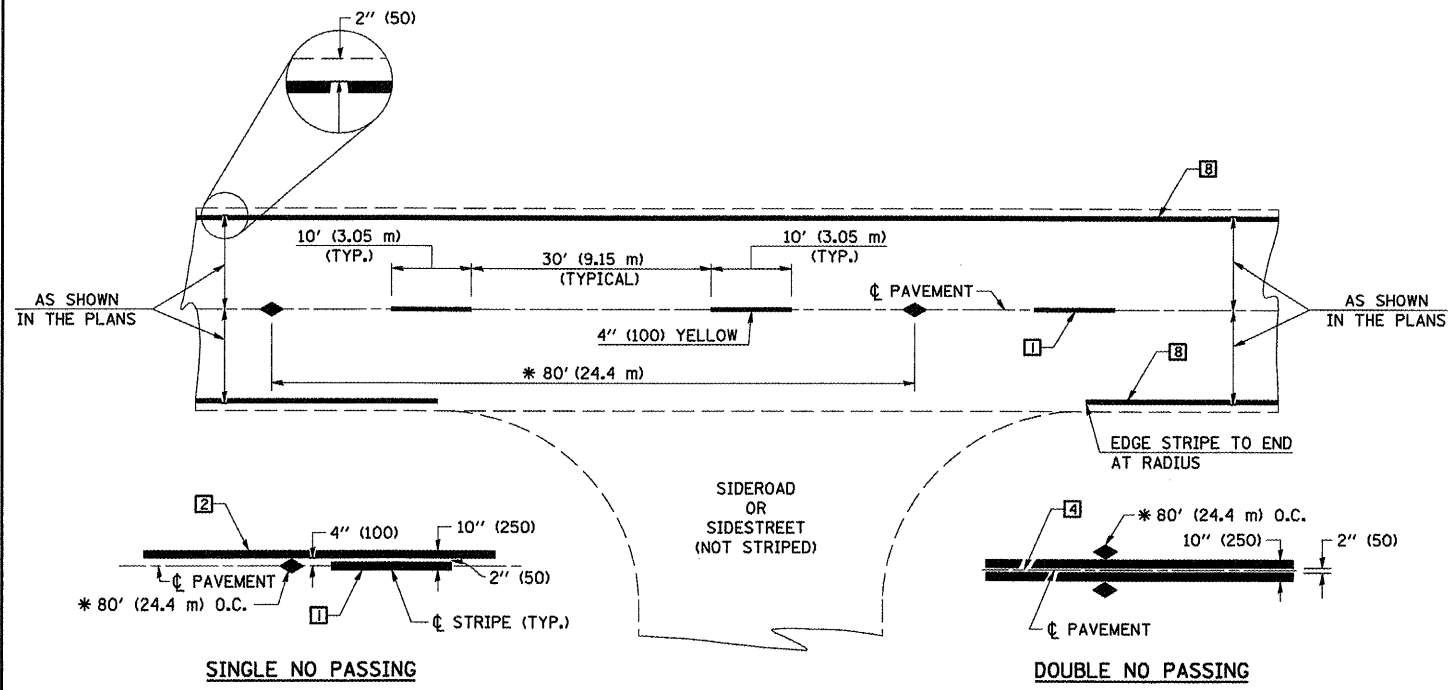
FILE NAME =	USER NAME = kayerb	DESIGNED - GMS	REVISED -
ca\prv_work\pwsidot\kayerb\d0248610\05700	5-sht-Details.dgn	DRAWN - GMS	REVISED -
	PLOT SCALE = 40.0001' / IN.	CHECKED -	REVISED -
	PLOT DATE = 2/4/2011	DATE -	REVISED -

**STATE OF ILLINOIS
DEPARTMENT OF TRANSPORTATION**

WIDTH RESTRICTION DETAIL

SCALE: SHEET NO. OF SHEETS STA. TO STA.

F.A.P. RTE.	SECTION	COUNTY	TOTAL SHEETS	SHEET NO.
•	**	***	16	12
CONTRACT NO. 70895				
FED. ROAD DIST. NO. ILLINOIS FED. AID PROJECT				



* REDUCE TO 40' (12.2 m) O.C. ON CURVES WITH POSTED OR ADVISORY SPEEDS OF 45 mph (70 km/h) OR LESS.

TWO LANE/TWO WAY

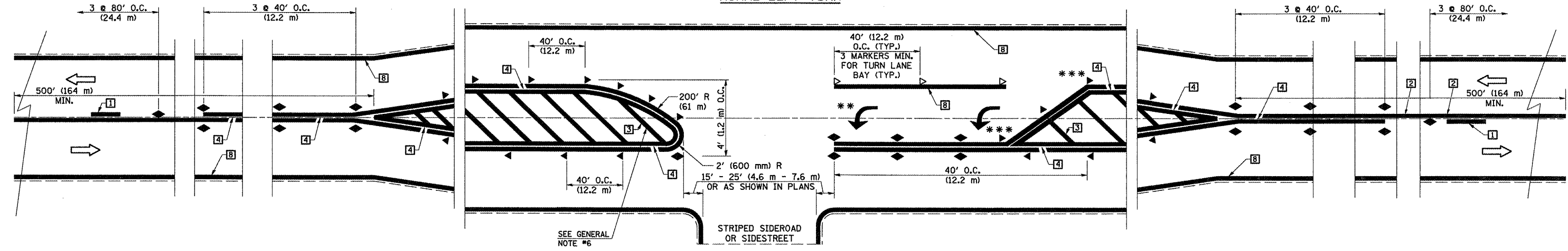
TYPICAL PAVEMENT MARKING LEGEND

- 1 4" (100) SKIP-DASH (YELLOW)
- 2 4" (100) SOLID (YELLOW)
- 3 12" (300) DIAGONAL (YELLOW)
- 4 4" (100) DOUBLE YELLOW (NARROW)
- 5 RESERVED
- 6 RESERVED
- 7 4" (100) SKIP-DASH (WHITE)
- 8 4" (100) SOLID (WHITE)
- 9 12" (300) DIAGONAL (WHITE)
- 10 6" (150) SOLID (WHITE)
- 11 24" (600) STOP BAR (WHITE)
- 12 8" (200) SOLID (WHITE)
- 13 4" (100) LANE LINE EXTENSIONS (WHITE)
- 14 4" (100) PARKING WHITE

TYPICAL PAVEMENT MARKERS LEGEND

- ◆ TWO-WAY AMBER MARKER
- ▶ ONE-WAY AMBER MARKER
- ▷ ONE-WAY CRYSTAL MARKER

RURAL LEFT TURN



*** REDUCE SPACING IF NECESSARY TO ASSURE MARKERS AT CORNER POINTS.
 ** TURN ARROWS SHALL BE PLACED AS SHOWN ON SHEET #2.

Note: All dimensions are in INCHES (millimeters) unless otherwise shown.

• FAP 322 / FAP 315
 ** POSTING MITIGATION FY2011-2
 *** DEWITT / MCLEAN

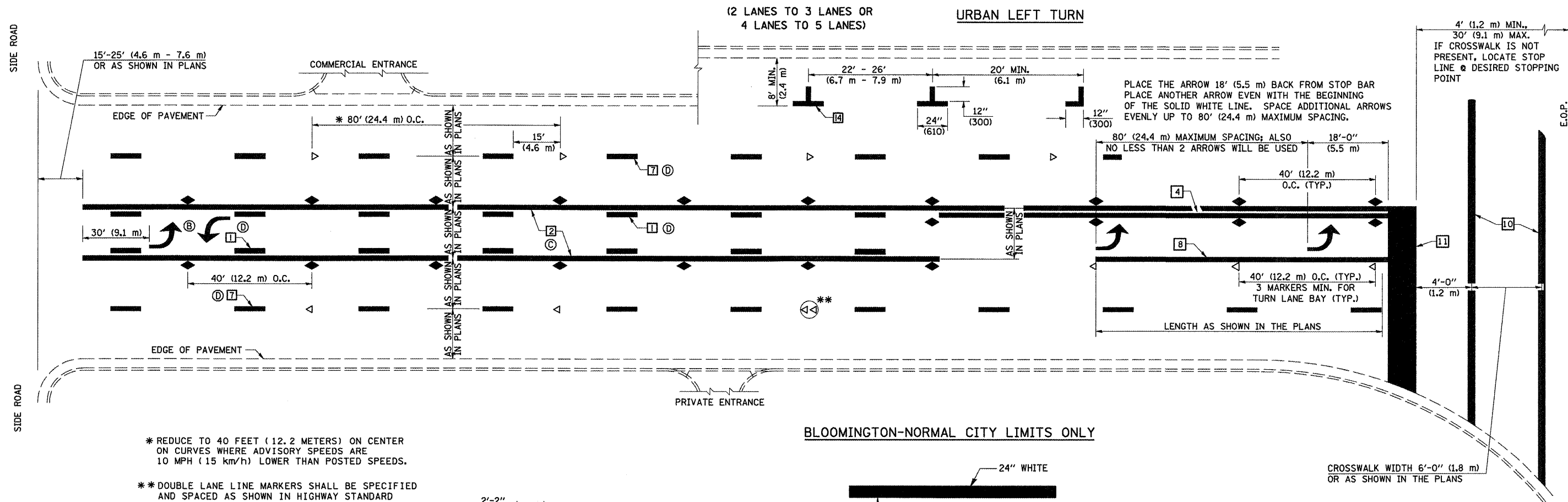
DISTRICT 5 DETAIL NO. 7800AAAA

FILE NAME =	USER NAME = keyar-b	DESIGNED -	REVISED - 11/06
es:\pw_work\pwsdot\keyar-b\024881\057085-shr-Detals.dgn		DRAWN -	REVISED - 09/2009 - KJT
PLOT SCALE = 48.0001" / IN.		CHECKED -	REVISED -
PLOT DATE = 2/4/2011		DATE -	REVISED -

**STATE OF ILLINOIS
 DEPARTMENT OF TRANSPORTATION**

PAVEMENT MARKING AND MARKERS (RURAL & URBAN APPLICATIONS)	
SCALE:	SHEET NO. 1 OF 4 SHEETS STA. TO STA.

F.A.P. RTE.	SECTION	COUNTY	TOTAL SHEETS	SHEET NO.
.	**	***	16	13
CONTRACT NO. T0895				
FED. ROAD DIST. NO. ILLINOIS FED. AID PROJECT				

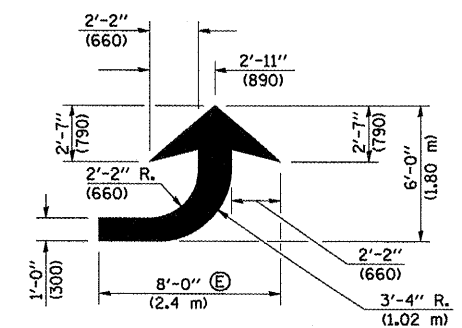


* REDUCE TO 40 FEET (12.2 METERS) ON CENTER ON CURVES WHERE ADVISORY SPEEDS ARE 10 MPH (15 km/h) LOWER THAN POSTED SPEEDS.

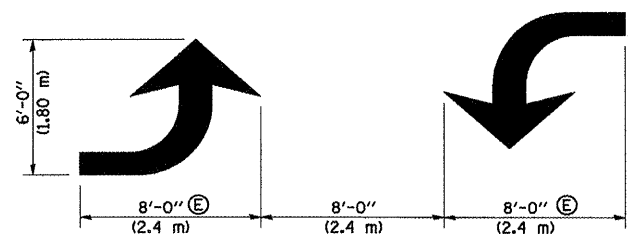
** DOUBLE LANE LINE MARKERS SHALL BE SPECIFIED AND SPACED AS SHOWN IN HIGHWAY STANDARD 781001 FOR MULTI-LANE DIVIDED AND UNDIVIDED HIGHWAYS.

GENERAL NOTES:

- (B) TURN ARROW PAIRS SHALL BE PLACED AT 250' (75 m) INTERVALS AND SHALL BE EVENLY SPACED BETWEEN BOTH ENDS OF THE BIDIRECTIONAL LEFT TURN LANE.
- (C) THE SOLID YELLOW PAVEMENT MARKINGS [2] SHOULD GENERALLY START OR END NEAR THE RADIUS POINT OF EACH STREET RETURN EXCEPT WHERE ONE OR BOTH ENDS WOULD INCLUDE STOP BARS.
- (D) THE SKIP-DASH PAVEMENT MARKINGS [1] OR [7] SHOULD BE CENTERED BETWEEN BOTH ENDS OF EACH CITY BLOCK AND SHALL BE PLACED SO THEY LINE UP ACROSS FROM EACH OTHER. SEE EXAMPLE ON SHEET 2 OF 3.
- (E) USE LARGE ARROW SIZE FOR BOTH RURAL AND URBAN LOCATIONS. (SEE LAST PAGE OF SECTION 780x FOR SYMBOLS TABLE)

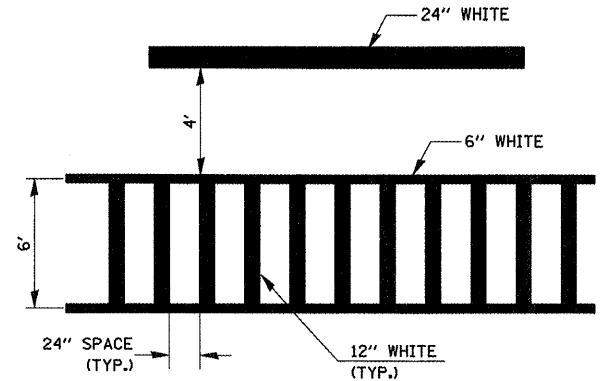


LEFT ARROW
REVERSE FOR RIGHT ARROW
AREA = 15.6 SQ. FT. (1.47 m²)
(WHITE)

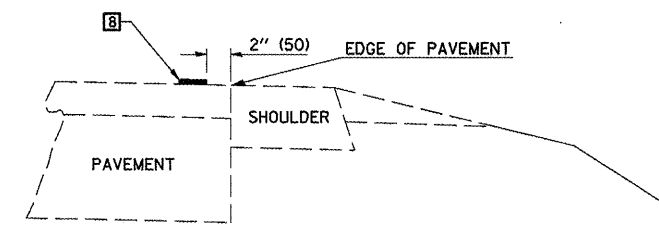


TYPICAL DOUBLE TURN ARROWS (WHITE)

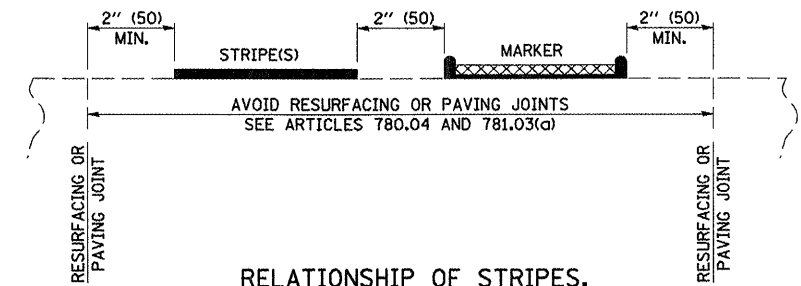
BLOOMINGTON-NORMAL CITY LIMITS ONLY



TYPICAL SPACING FOR CROSSWALKS & STOP BARS



RELATIONSHIP OF EDGE LINE TO EDGE OF PAVEMENT
(SAFETY SHOULDER OR PAVED SURFACE)
SEE ARTICLE 780.04



RELATIONSHIP OF STRIPES, MARKERS AND JOINTS

Note: All dimensions are in INCHES (millimeters) unless otherwise shown.

- * FAP 322 / FAP 315
- ** POSTING MITIGATION FY2011-2
- *** DEWITT / MCLEAN

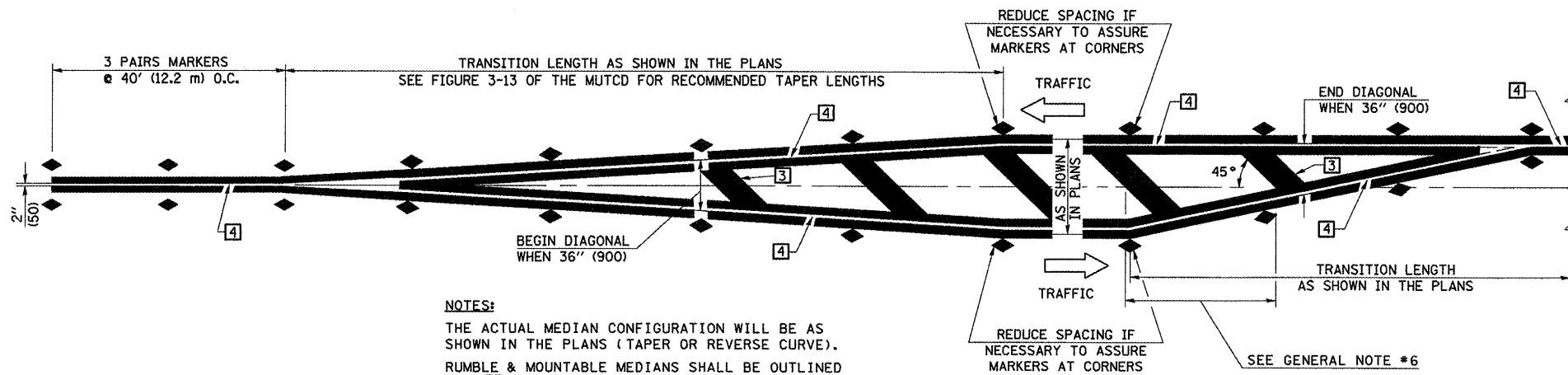
FILE NAME =	USER NAME = kayarb	DESIGNED -	REVISED - 11/06
ca:\pw\work\pwwork\kayarb\d0248810\0570885-shd-Detail1.dgn		DRAWN -	REVISED - 09/2009 - KJT
		CHECKED -	REVISED -
		DATE -	REVISED -

**STATE OF ILLINOIS
DEPARTMENT OF TRANSPORTATION**

**PAVEMENT MARKING AND MARKERS
(RURAL & URBAN APPLICATIONS)**

SCALE: SHEET NO. 2 OF 4 SHEETS STA. TO STA.

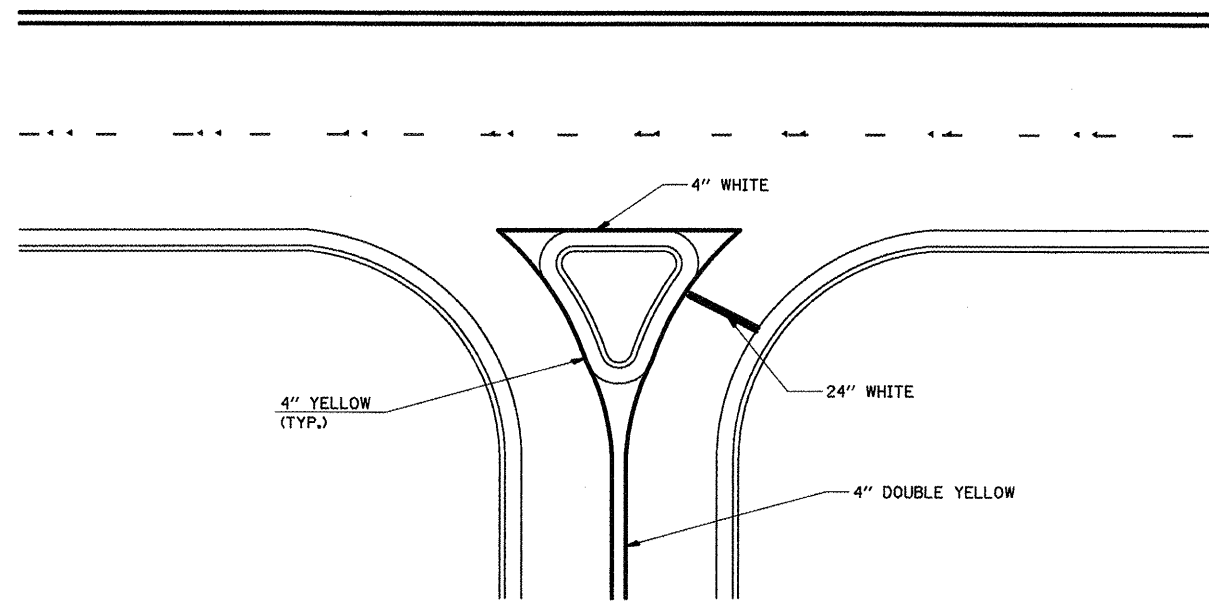
DISTRICT 5 DETAIL NO. 7800AAAA				
F.A.P. RTE.	SECTION	COUNTY	TOTAL SHEETS	SHEET NO.
*	**	***	16	14
			CONTRACT NO. 70895	
FED. ROAD DIST. NO.		ILLINOIS FED. AID PROJECT		



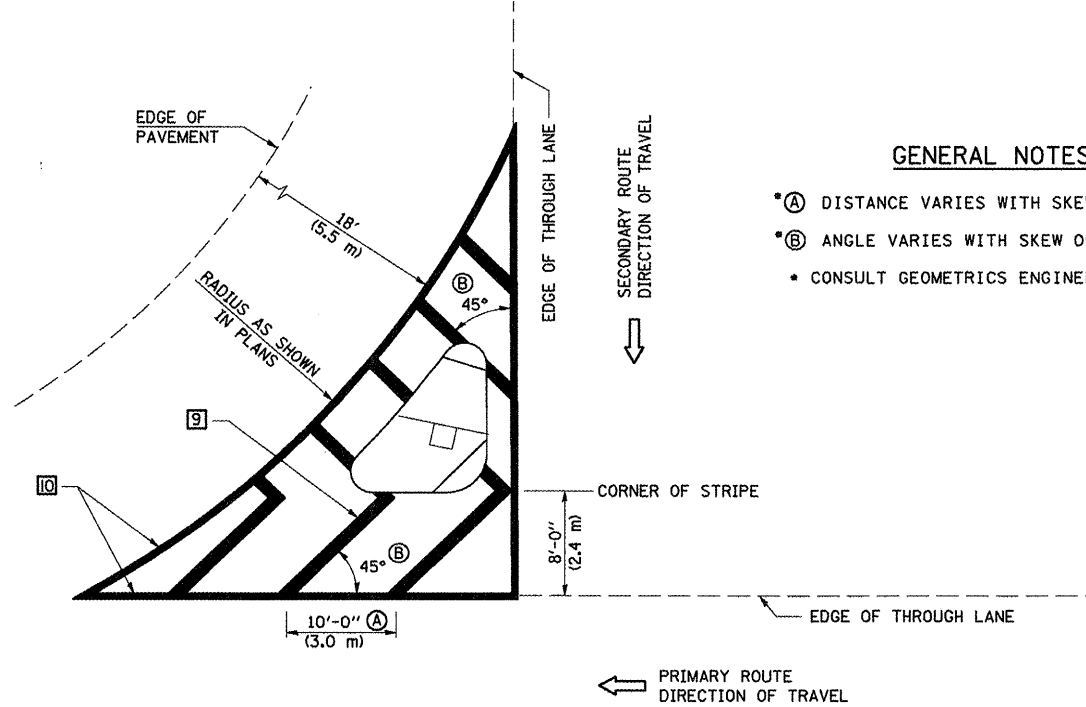
TYPICAL MEDIAN TRANSITIONS

GENERAL NOTES

1. WHEN MEDIANS ARE PRESENT, PAVEMENT MARKINGS ARE TO BE PLACED ADJACENT TO MEDIANS.
2. SOME OF THE INFORMATION INCLUDED WITH THIS DETAIL MAY NOT BE APPLICABLE TO THIS IMPROVEMENT.
3. PAVEMENT MARKINGS ARE TO BE EXTENDED THROUGH OMISSIONS WHEN APPLICABLE.
4. A STRIPING KEY IS AVAILABLE ELSEWHERE AND SHALL BE SHOWN WHERE THE QUANTITIES ARE LISTED.
5. FINAL PAVEMENT MARKINGS SHALL BE IN PLACE PRIOR TO PLACING ANY RAISED REFLECTIVE PAVEMENT MARKERS.
6. THE FOLLOWING CRITERIA SHALL BE USED FOR SELECTING THE DIAGONAL PAVEMENT MARKING SPACING,
 - <30 MPH USE 15' (<50 km/h USE 4.5 m)
 - 30-45 MPH USE 20' (50-75 km/h USE 6.0 m)
 - >45 MPH USE 30' (>75 km/h USE 9.0 m)



RIGHT IN - RIGHT OUT ACCESS



ISLAND

GENERAL NOTES

- (A) DISTANCE VARIES WITH SKEW OF INTERSECTION.
- (B) ANGLE VARIES WITH SKEW OF INTERSECTION.
- CONSULT GEOMETRICS ENGINEER

Note: All dimensions are in INCHES (millimeters) unless otherwise shown.

- FAP 322 / FAP 315
- POSTING MITIGATION FY2011-2
- DEWITT / MCLEAN

DISTRICT 5 DETAIL NO. 7800AAAA

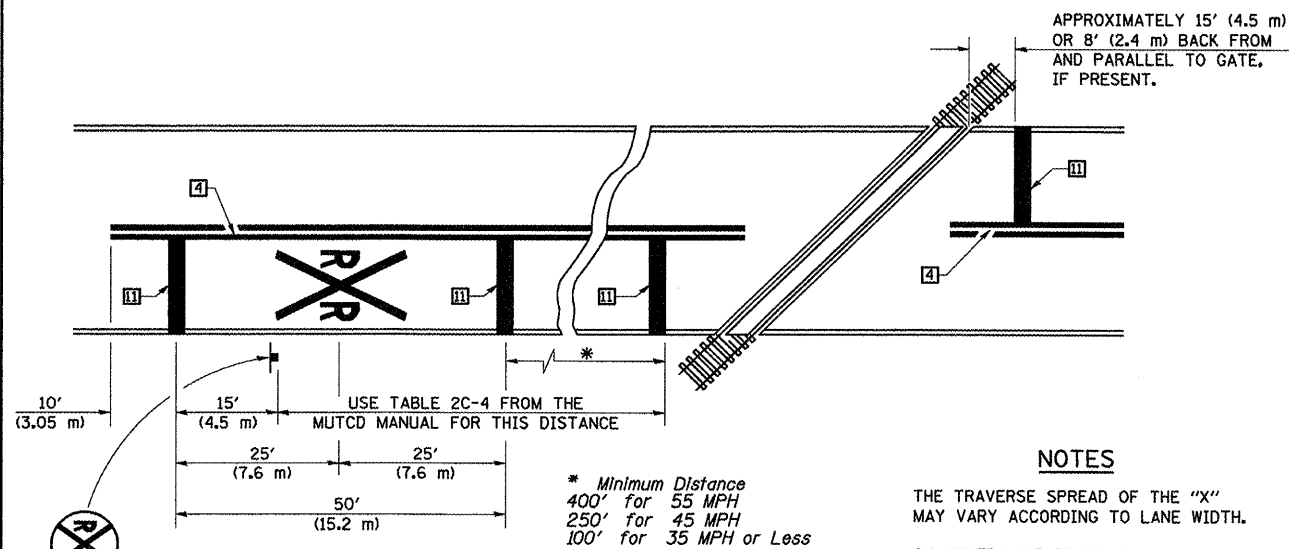
FILE NAME =	USER NAME = kayar-b	DESIGNED -	REVISED - 11/06
ca:\pw\work\pwwidot\kayar-b\02248810\05708815-shd-Details.dgn		DRAWN -	REVISED - 09/2009 - KJT
		CHECKED -	REVISED -
		DATE -	REVISED -

STATE OF ILLINOIS
DEPARTMENT OF TRANSPORTATION

PAVEMENT MARKING AND MARKERS
(RURAL & URBAN APPLICATIONS)

SCALE: SHEET NO. 3 OF 4 SHEETS STA. TO STA.

F.A.P. RTE.	SECTION	COUNTY	TOTAL SHEETS	SHEET NO.
.	16	15
CONTRACT NO. 70895				
FED. ROAD DIST. NO. ILLINOIS FED. AID PROJECT				



PAVEMENT MARKINGS AT RAILROAD-HIGHWAY GRADE CROSSING

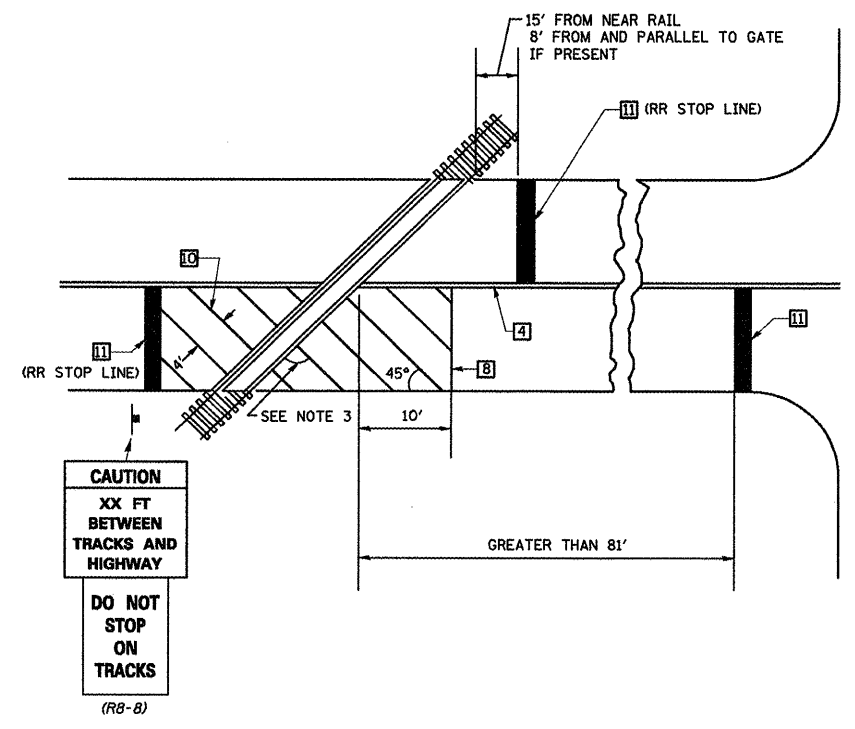
NOTES

THE TRAVERSE SPREAD OF THE "X" MAY VARY ACCORDING TO LANE WIDTH.

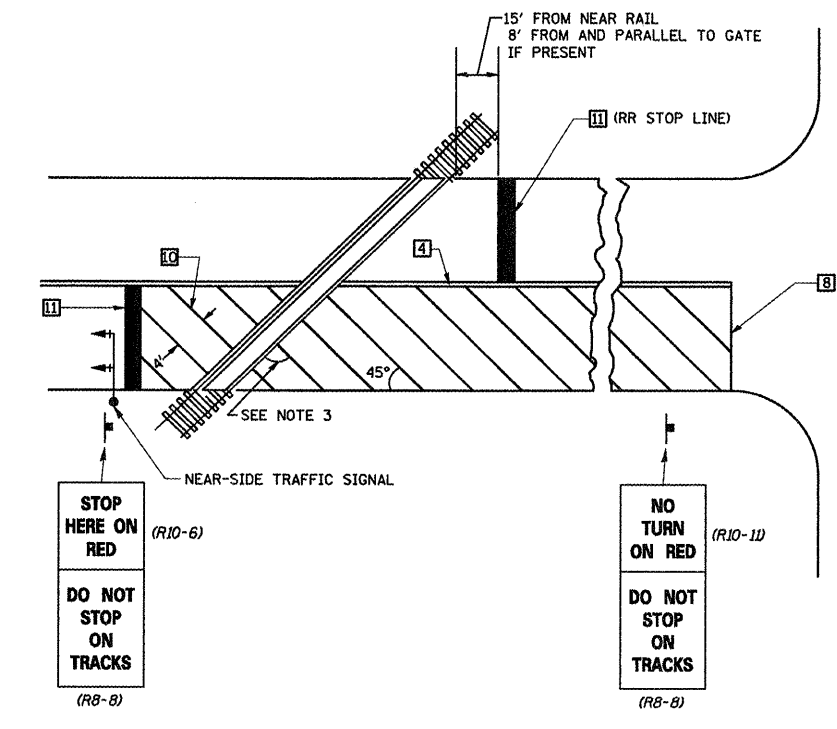
ON MULTI-LANE ROADS, THE STOP LINES SHALL EXTEND ACROSS ALL APPROACH LANES AND SEPARATE RXR SYMBOLS SHALL BE PLACED ADJACENT TO EACH OTHER IN EACH LANE.

WHEN THE PAVEMENT MARKING SYMBOL IS USED, A PORTION OF THE SYMBOL SHOULD BE LOCATED DIRECTLY ADJACENT TO THE ADVANCE WARNING SIGN (W10-1) AS PLACED BY TABLE II-1, CONDITION B OF THE MUTCD.

RAILROAD CROSSING WITH INTERCONNECT ONLY



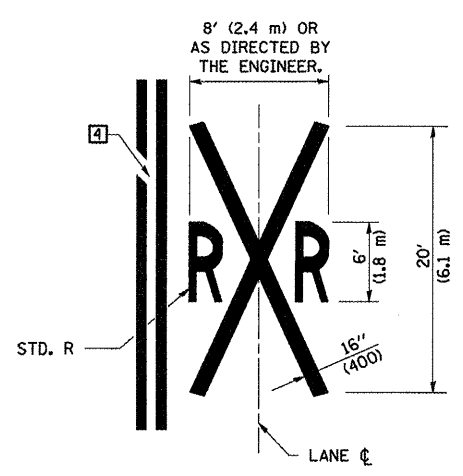
RAILROAD CROSSING WITH INTERCONNECT AND PRE-SIGNALS



SUPPLEMENTAL PAVEMENT MARKING TREATMENT FOR RAILROAD-HIGHWAY GRADE CROSSING

GENERAL NOTES

- SUPPLEMENTAL PAVEMENT MARKINGS TO BE INSTALLED ONLY ON APPROACHES TO INTERSECTIONS CONTROLLED BY TRAFFIC SIGNALS WHICH ARE INTERCONNECTED WITH THE RAILROAD WARNING SIGNALS.
- EXTEND PAVEMENT MARKINGS TO THE INTERSECTION ONLY WHERE NEAR-SIDE TRAFFIC SIGNALS ARE USED.
- WHERE THE ANGLE BETWEEN THE DIAGONAL PAVEMENT MARKINGS AND THE TRACK WOULD BE LESS THAN 20°, THE PAVEMENT MARKINGS SHOULD BE PLACED IN THE OPPOSITE DIRECTION FROM THAT SHOWN.



Note: All dimensions are in INCHES (millimeters) unless otherwise shown.

FAP 322 / FAP 315
 ** POSTING MITIGATION FY2011-2
 *** DEWITT / MCLEAN

DISTRICT 5 DETAIL NO. 7800AAAA				
F.A.P. RTE.	SECTION	COUNTY	TOTAL SHEETS	SHEET NO.
.	16	16
			CONTRACT NO. 70895	
FED. ROAD DIST. NO. ILLINOIS FED. AID PROJECT				

**STATE OF ILLINOIS
 DEPARTMENT OF TRANSPORTATION**

**PAVEMENT MARKING AND MARKERS
 (RURAL & URBAN APPLICATIONS)**

FILE NAME =	USER NAME = keyar-b	DESIGNED -	REVISD - 11/06
c:\pwork\pwork\keyar-b\d0248810\05708	5-shd-Detail.dgn	DRAWN -	REVISD - 09/2009 - KJT
	PLOT SCALE = 40.0001" / IN.	CHECKED -	REVISD -
	PLOT DATE = 2/4/2011	DATE -	REVISD -

SCALE: SHEET NO. 4 OF 4 SHEETS STA. TO STA.