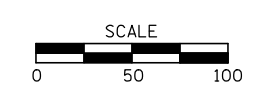
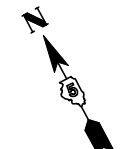
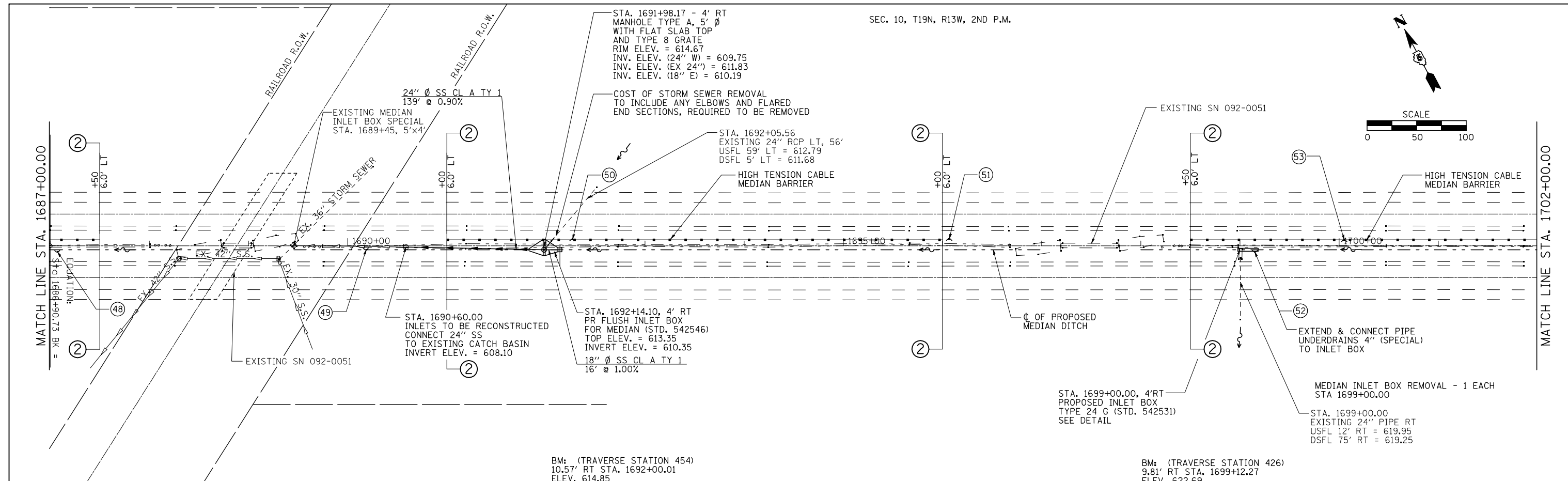


SEC. 10, T19N, R13W, 2ND P.M.



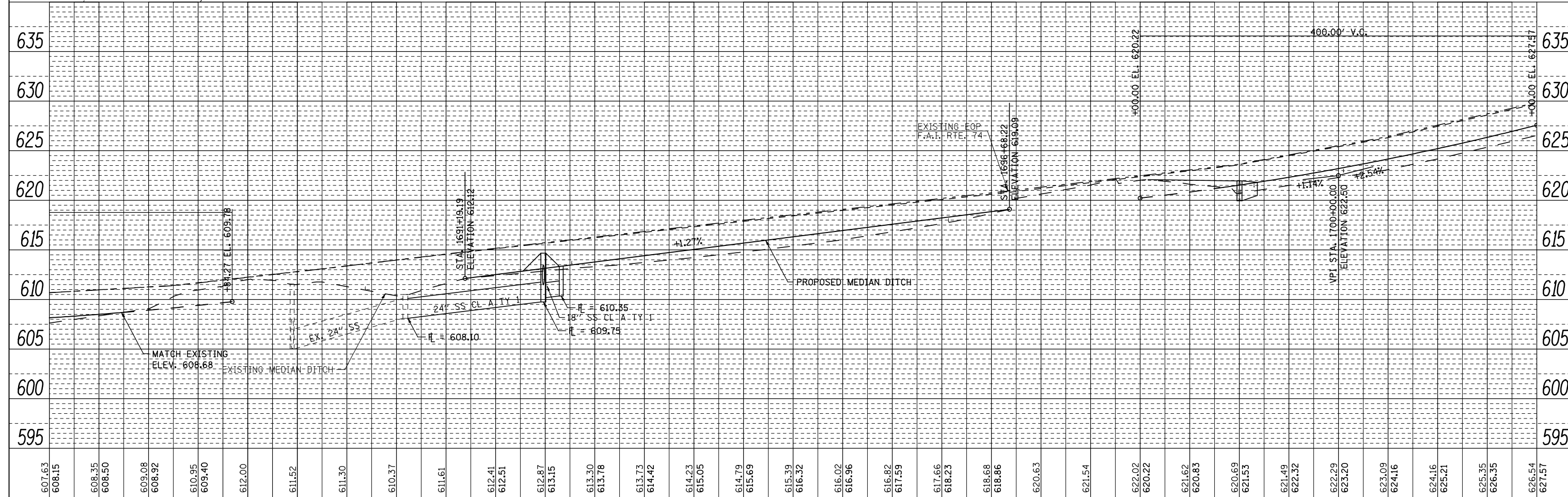
PLAN	SURVEYED	DATE
	PLOTTED	BY
	CHECKED	
	NOTED	
	FILED	
	NO.	

PROFILE	SURVEYED	DATE
	PLOTTED	BY
	CHECKED	
	NOTED	
	FILED	
	NO.	



BM: (TRAVERSE STATION 454)  
10.57' RT STA. 1692+00.01  
ELEV. 614.85

BM: (TRAVERSE STATION 426)  
9.81' RT STA. 1699+12.27  
ELEV. 622.69



FILE NAME =	USER NAME = *USER*	DESIGNED -	REVISED -	<b>STATE OF ILLINOIS DEPARTMENT OF TRANSPORTATION</b>	<b>PLAN &amp; PROFILE F.A.I. 74</b>			F.A.I. RTE. = 74	SECTION = HSIP FY2011-4	COUNTY = VERMILION	TOTAL SHEETS = 88	SHEET NO. = 18
*FILEL*	PLOT SCALE = *SCALE*	DRAWN -	REVISED -		SCALE:	SHEET NO. 9 OF 13 SHEETS	STA. 1687+00.00 TO STA. 1702+00.00	CONTRACT NO. 70910		ILLINOIS FED. AID PROJECT		
	PLOT DATE = *DATE*	CHECKED -	REVISED -									
		DATE -	REVISED -									