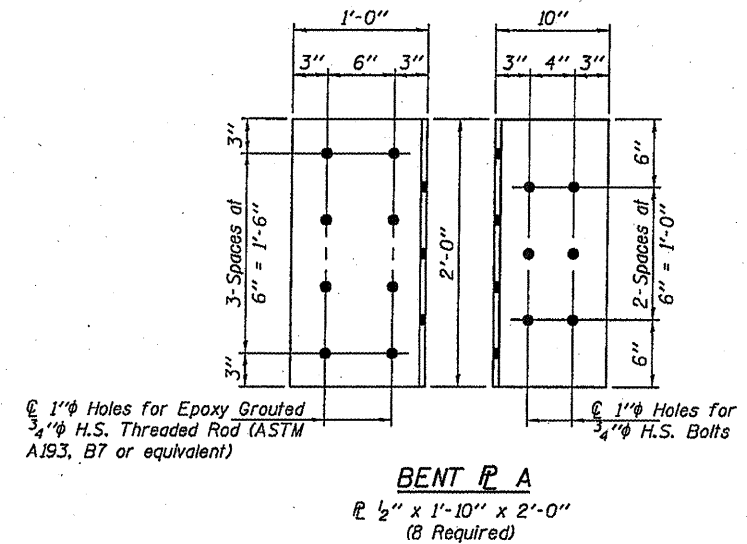
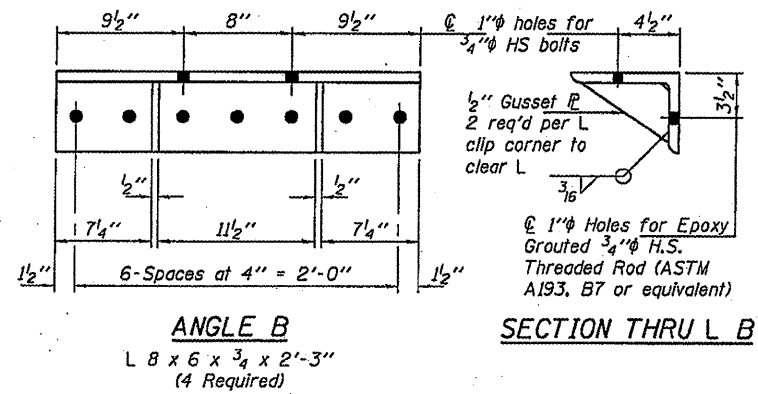
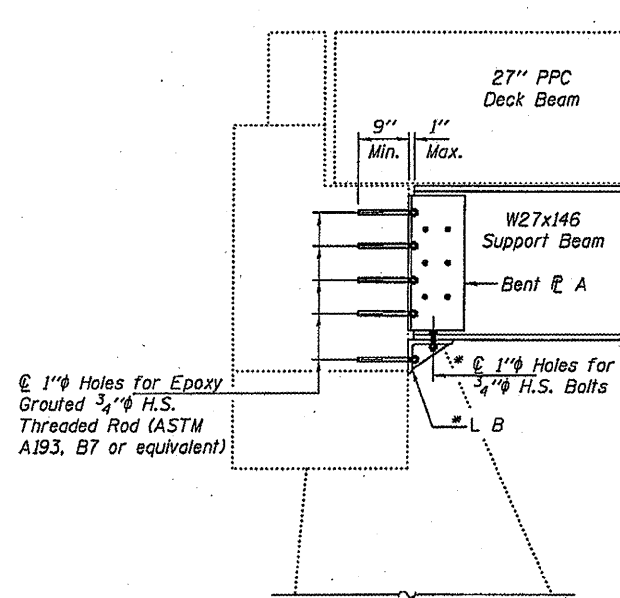


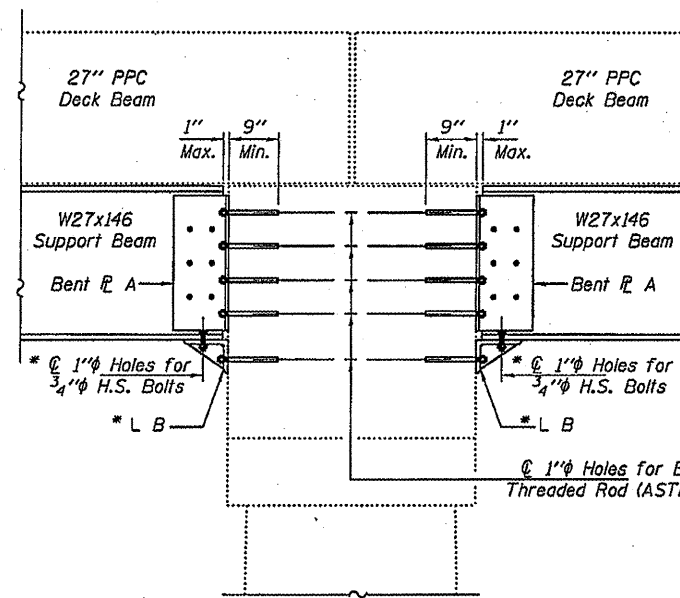
TYPICAL CROSS-SECTION THRU BEAM 1
(West Abutment shown, Piers 1 & 2 similar)



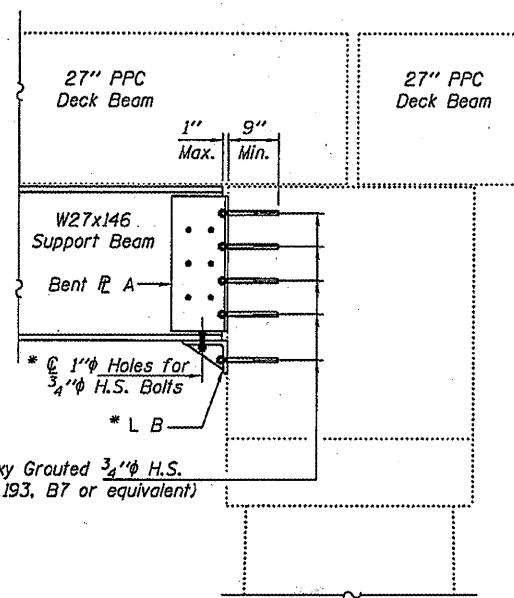
* Use holes in L B to field drill holes in Support Beam.



SECTION THRU ABUTMENT



SECTION THRU PIER 1



SECTION THRU PIER 2

DESIGNED - DAB	EXAMINED - <i>James F. J...</i>
CHECKED - VHV	ACTING ENGINEER OF STRUCTURAL SERVICES
DRAWN - Kyle M. Steffen	PASSED - <i>Carl...</i>
CHECKED - DAB VHV	ACTING ENGINEER OF BRIDGES AND STRUCTURES

DATE - APRIL 29, 2011

STATE OF ILLINOIS
DEPARTMENT OF TRANSPORTATION

P.P.C. DECK BEAM SUPPORT DETAILS
SN 092-0065
SHEET NO. 2 OF 2 SHEETS

F.A.P. RTE. 711	SECTION POSTING MITIGATION FY2011-3	COUNTY VERMILION	TOTAL SHEETS 10	SHEET NO. 5
ILLINOIS FED. AID PROJECT			CONTRACT NO. 70920	