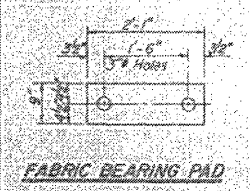


STATE OF ILLINOIS
DEPARTMENT OF TRANSPORTATION

PROJECT NO.	SECTION	COUNTY	TOTAL SHEETS	SHEET NO.
116607	Vermilion	16	9	6



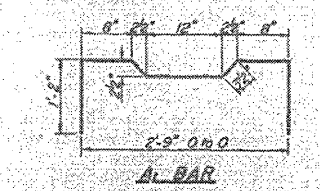
FABRIC BEARING PAD



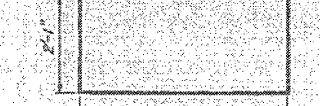
GRAPHITED ASBESTOS BEARING PAD



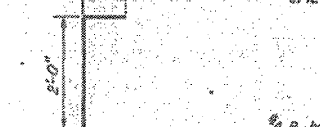
U₂ BAR



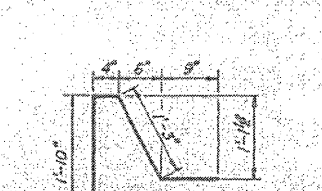
A₁ BAR



U₂ BARS



D₁ BAR



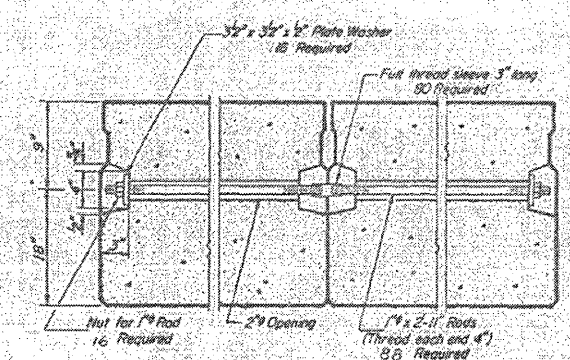
D BAR



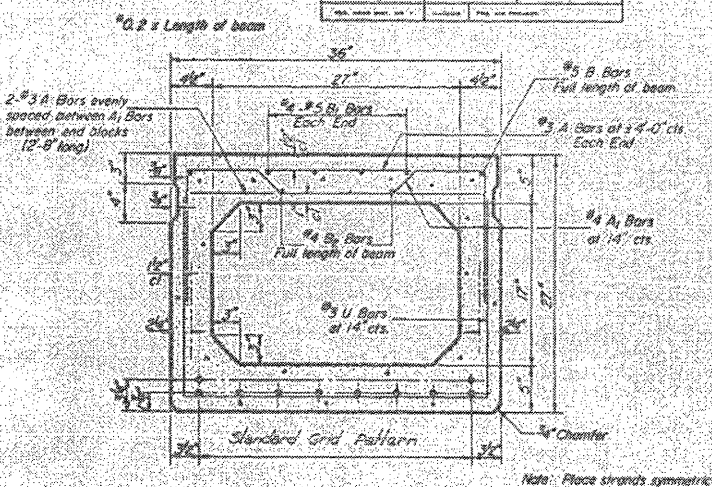
G BAR



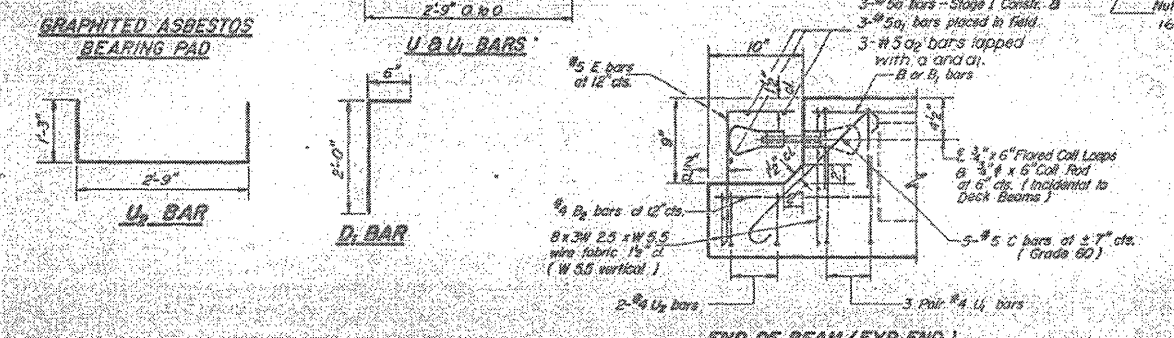
E BAR



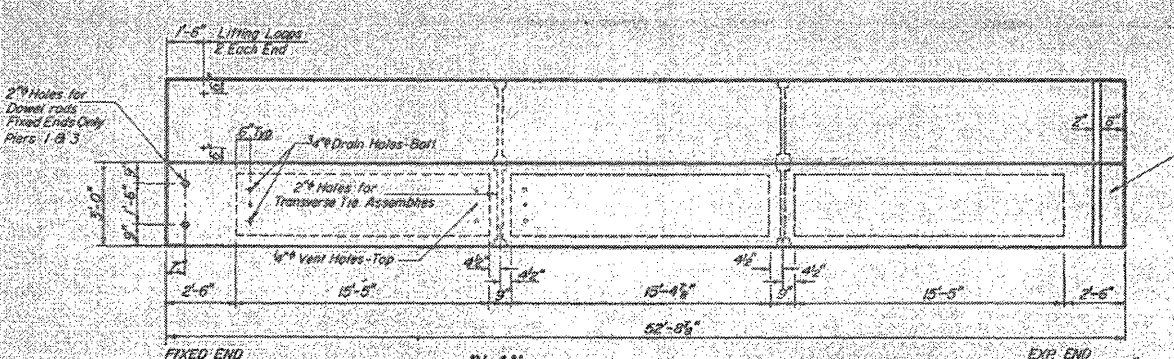
TYPICAL TRANSVERSE TIE ASSEMBLY
The nut for Stage I tie assembly shall be left in place when installing the Stage II ties.



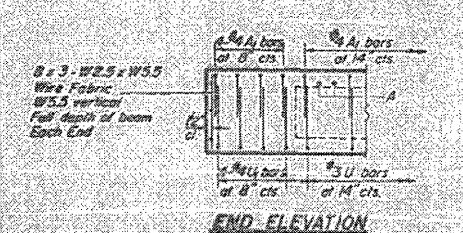
TYPICAL SECTION
6" Strands Each Strand Stressed to 29,900 Lbs.
8-Strands 1/4" up, 2-Strands 3/4" up.



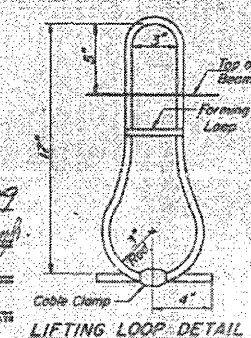
END OF BEAM (EXP. END)



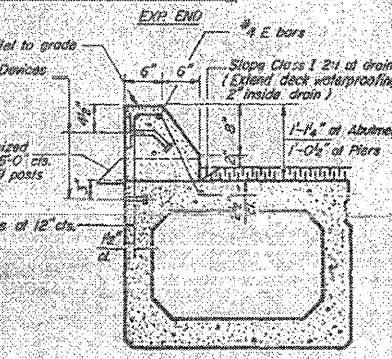
PLAN



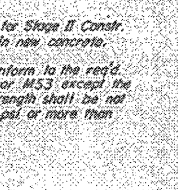
END ELEVATION



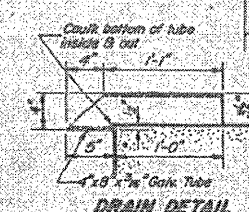
LIFTING LOOP DETAIL



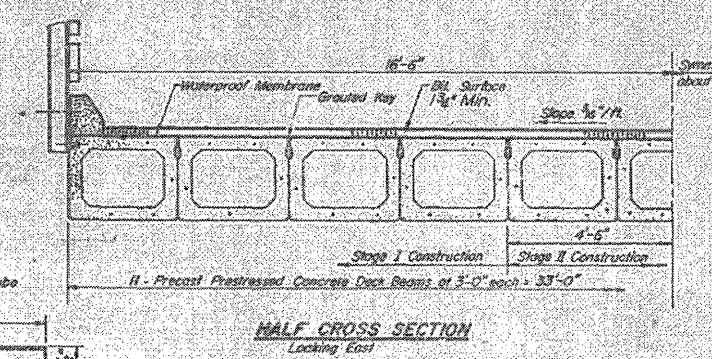
SECTION THRU CURB
Curbs shall be poured in the field. Class X Concrete. B, E bars for curbs are filled on Sheet #4.



A₂ BAR



DRAIN DETAIL



HALF CROSS SECTION
Looking East

NOTES
Reinforcing steel shall be non-galvanized high strength, stress-relieved 7-wire strand, Grade 270. The nominal diameter shall be 1/2" and the nominal cross-sectional area shall be 0.153 sq. in. Lifting loops shall be 1/2" diameter, 6 x 25 class wire rope with fiber core and shall have a minimum ultimate tensile strength of 33,000 lbs.
The 1/2" rods in the transverse tie assembly shall be tightened to a snug fit and the threads set. Pockets that receive transverse tie bar on outside shall be filled with grout after transverse tie assembly is in place.
Longitudinal shear keys shall be packed with a very dry mix of 2-1 sand and PC mortar.
After beams have been erected, holes for the dowel anchors shall be drilled into the substructure and the anchor dowels shall be grouted in place.
Reinforcement bars shall conform to AASHTO: M-31 or M-53, Grade 60.
Cost of reinforcement and accessories cast into the beam, of bearing pads, of armor angles, and of grouting longitudinal shear keys is included in unit price bid for "Precast Prestressed Concrete Deck Beams".

BILL OF MATERIAL

Bar	No.	Size	Length	Shape
a	12	#5	15'-0"	—
g	12	#5	21'-0"	—
g ₂	12	#5	6'-0"	—
c	20	#5	2'-11"	—
Reinforcement Bars			Lbs.	440
Class X Concrete			Cu. Yds.	3.3
Precast Prestressed Concrete Deck Beams			Sq. Ft.	6962
Removal of exist Superstruct			Each	1

SUPERSTRUCTURE
F.A.I. R. 711 SEC. 116.02
VERMILION CO.
Sta. 730+96.00

DESIGNED	Per waller	EXAMINED	April 17 1977
CHECKED	St. J. N...	PASSED	Code Enforcement
DRAWN	St. J. N...	APPROVED	
CHECKED	St. J. N...	DIRECTOR OF HIGHWAYS	

PD-5-5 2-1-79