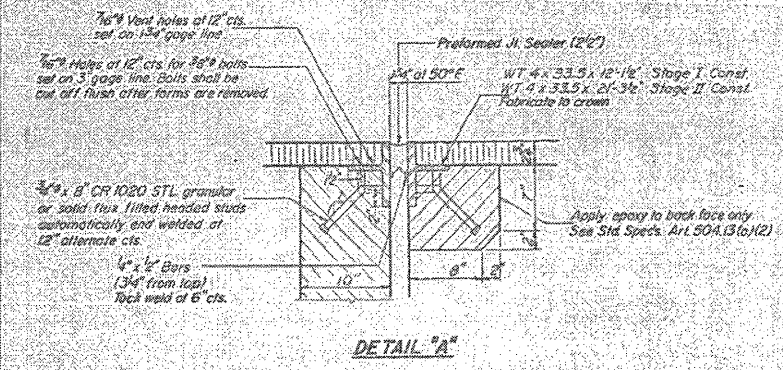
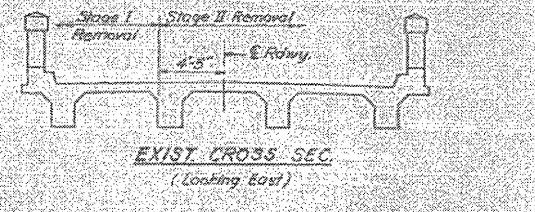
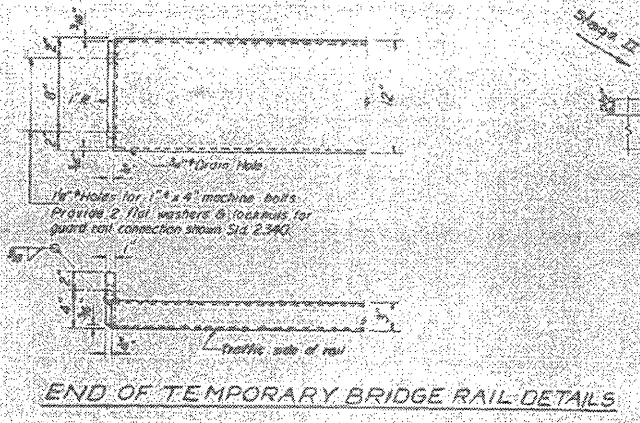
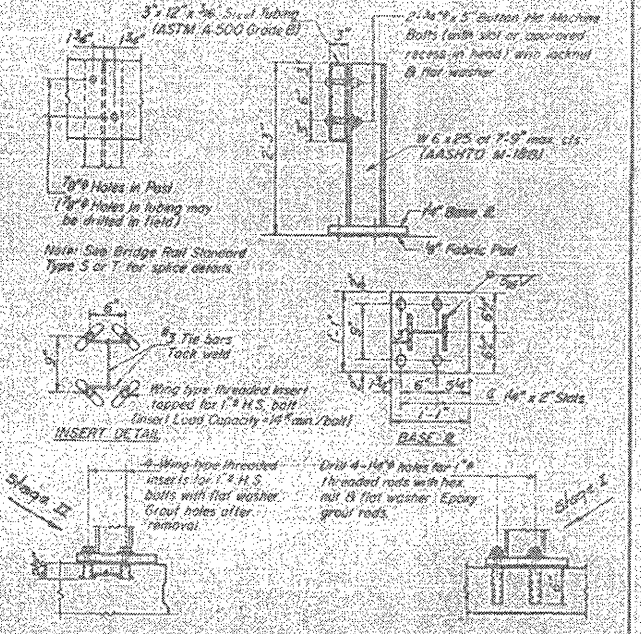
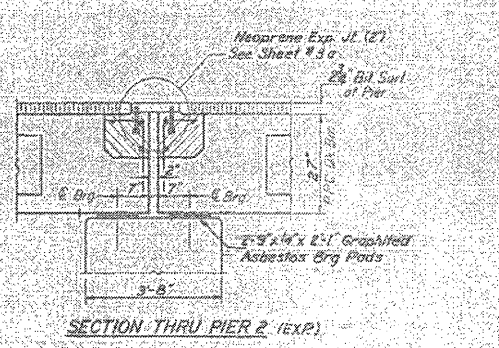
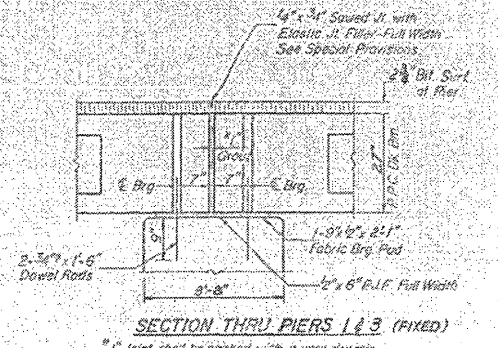
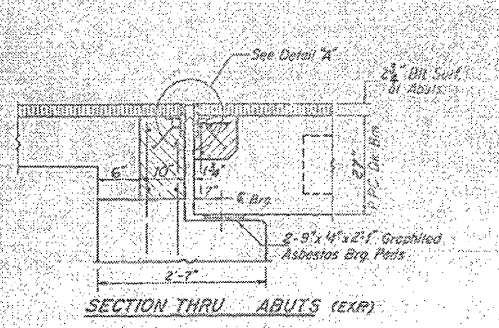


STATE OF ILLINOIS  
DEPARTMENT OF TRANSPORTATION

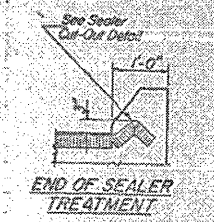
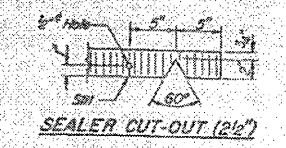
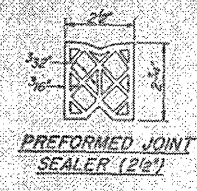
PROJECT NO.	SECTION	COUNTY	TOTAL SHEETS	SHEET NO.
711	VERMILION 16	10	10	8



NOTE: Dimensions are at right angles.  
Hatched areas to be poured after beams have been erected and joints grouted.  
Ends of beams shall be aligned at the expansion joints. Any linear variations in the beam lengths shall be placed at the fixed joint. See End of Beam Detail for reinforcement.  
Hatched Area Quantities:  
on the beam are billed with the superstructure sheet #2  
on the abutments are billed with the abutment sheet #5.

DESIGNED	EXAMINED
CHECKED	PASSED
DRAWN	APPROVED
CHECKED	

APR 17 1979  
East St. Louis



SUPERSTRUCTURE DETAILS  
F.A. RT. 711 SEC. 116 BR  
VERMILION COUNTY  
STA. 730+96.00