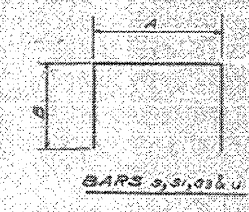
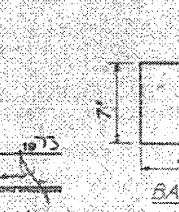
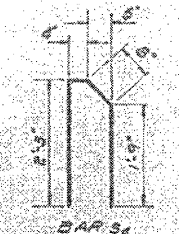
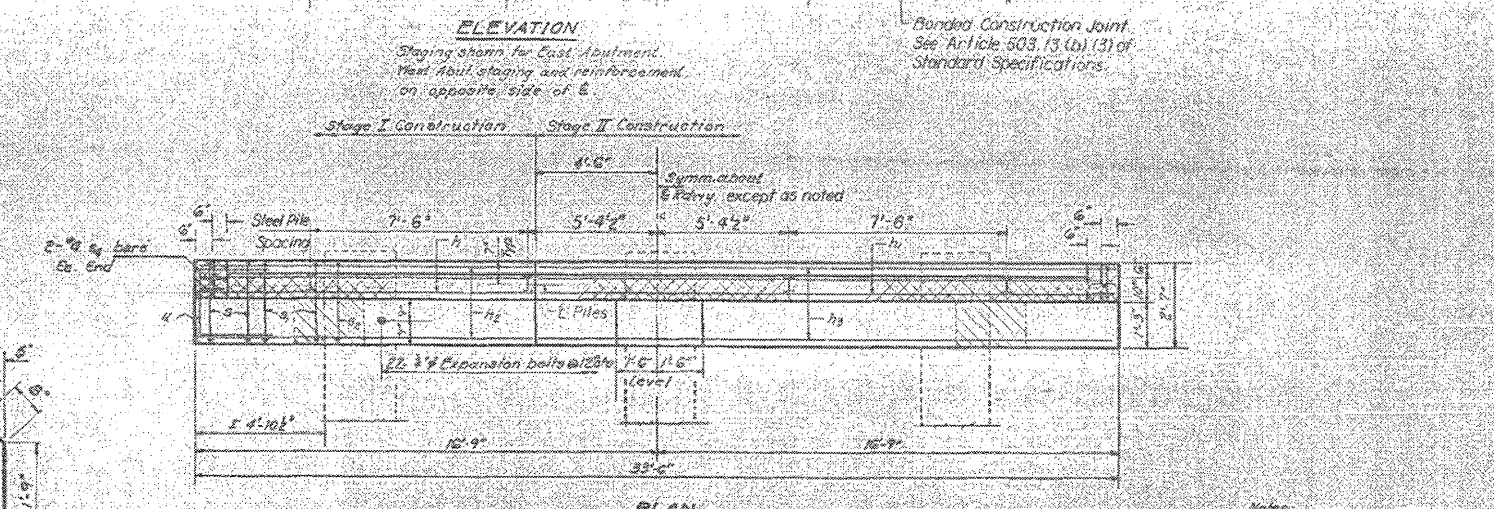
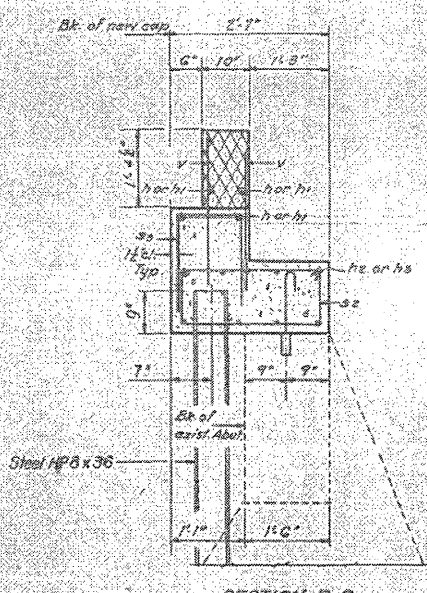
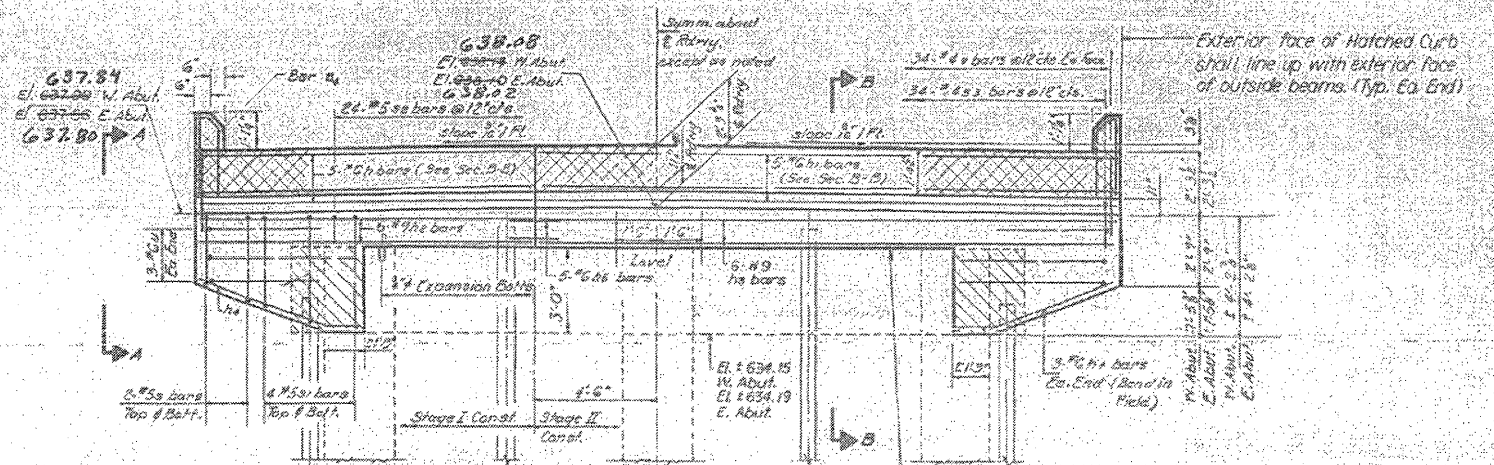
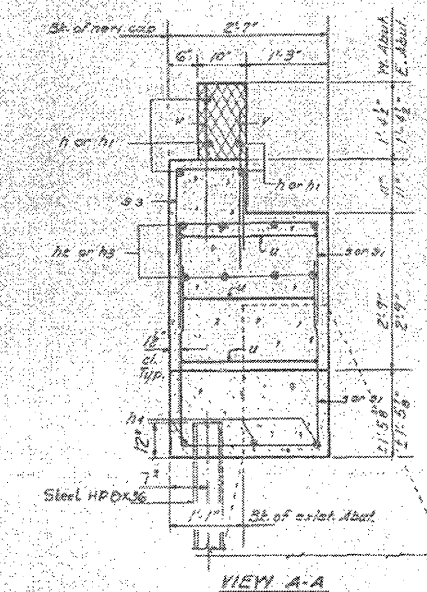


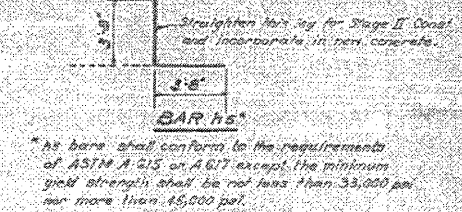
STATE OF ILLINOIS
DEPARTMENT OF TRANSPORTATION

PROJECT NO.	SECTION	COUNTY	TOTAL SHEETS	SHEET NO.
711	VERMILION	16	15	9



All B Dimensions

Bar	A	B
s	2'-4"	2'-6"
s1	2'-4"	3'-6"
s3	1'-0"	1'-9"
u	2'-2"	6'-0"



TWO ABUTMENTS
BILL OF MATERIAL

Bar	No.	Size	Length	Shape
s	10	#5	12'-0"	U
h1	10	#6	12'-0"	U
h2	12	#8	12'-0"	U
h3	12	#8	12'-0"	U
h4	12	#5	6'-0"	U
h5	10	#6	7'-4"	U
s	32	#5	11'-4"	U
s1	32	#5	11'-4"	U
s2	48	#5	8'-9"	U
s3	68	#4	4'-6"	U
s4	8	#4	5'-0"	U
u	12	#6	14'-0"	U
v	126	#4	2'-9"	U

Reinforcement Bars Lbs. 3,540
 Cast in Concrete 21,720 19.0
 Concrete Removal 01,100 0
 1/2" Expansion Bolts Each 44
 Furnishing Steel
 H Piles: HP8 x 36 Lin.ft. 108

Notes:
 Hatched area indicates concrete removal.
 Gross hatched area to be poured after beams are in place.
 Expansion bolts shall be anchored in sound concrete.
 All edges shall have standard 3" chamfer except as noted.
 Clean, straighten existing reinforcement and incorporate in new concrete.
 PILE DATA
 Type - Steel H Piles HP8 x 36
 No. Req'd. - 6 x 2 Test Piles, 1 at each abutment.
 Length - 18'
 Piles shall be placed in holes prepared to the top of existing footing. After placing the piles the prepared holes shall be filled with sand. Cost incidental to furnishing Steel H Piles.
 The piles shall meet the requirements of AASHTO M222 - Grade 50 Steel.

ABUTMENTS
 FA.RT. 711 SEC. 116.1B
 VERMILION CO.
 STA. 730+96

DESIGNED: P. J. ...
 CHECKED: ...
 DRAWN: ...
 CHECKED: ...

EXAMINED: ...
 PASSED: ...
 DATE: ...

FILE NAME: ...
 USER NAME: ...
 PLOT SCALE: 48,0000 / IN.
 PLOT DATE: 2/28/2011

DESIGNED -
 DRAWN -
 CHECKED -
 DATE -

REVISED -
 REVISED -
 REVISED -
 REVISED -

STATE OF ILLINOIS
DEPARTMENT OF TRANSPORTATION

AS-BUILT PLANS
(FOR INFORMATION ONLY)

SCALE: SHEET NO. 9 OF 10 SHEETS STA. TO STA.

F.A.P. RTE.	SECTION	COUNTY	TOTAL SHEETS	SHEET NO.
711		VERMILION	10	9

CONTRACT NO. 70920
 ILLINOIS FED. AID PROJECT

POSTING MITIGATION FY2011-3