

F.A.S. RTE.	SECTION	COUNTY	TOTAL SHEETS	SHEET NO.
1741	1120	MONTGOMERY	24	1
		ILLINOIS	CONTRACT NO. 72D93	

STATE OF ILLINOIS
DEPARTMENT OF TRANSPORTATION

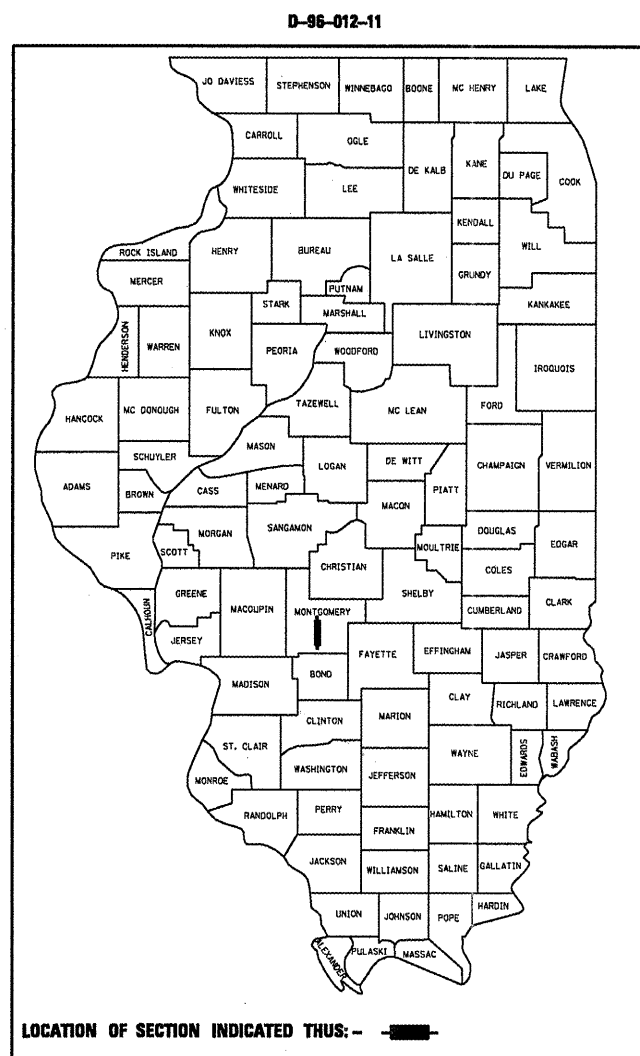
DIVISION OF HIGHWAYS

**PROPOSED
HIGHWAY PLANS**

FAS ROUTE 1741 (FR I-55 WEST)
SECTION 112Q

SEAL COAT
MONTGOMERY COUNTY

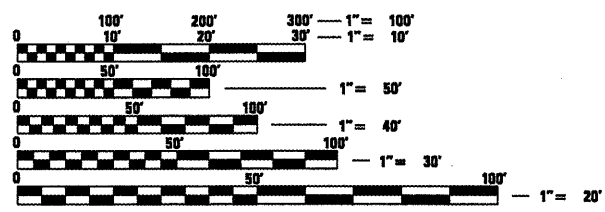
C-96-012-11



INDEX OF SHEETS

- 2. GENERAL NOTES
- 3. SUMMARY OF QUANTITIES
- 4. SCHEDULE OF QUANTITIES
- 5. TYPICAL SECTION
- 6-24. PLAN SHEETS

ADT 354 (2010)
MU 2.2%
SU 2.2%
PV 95.6%

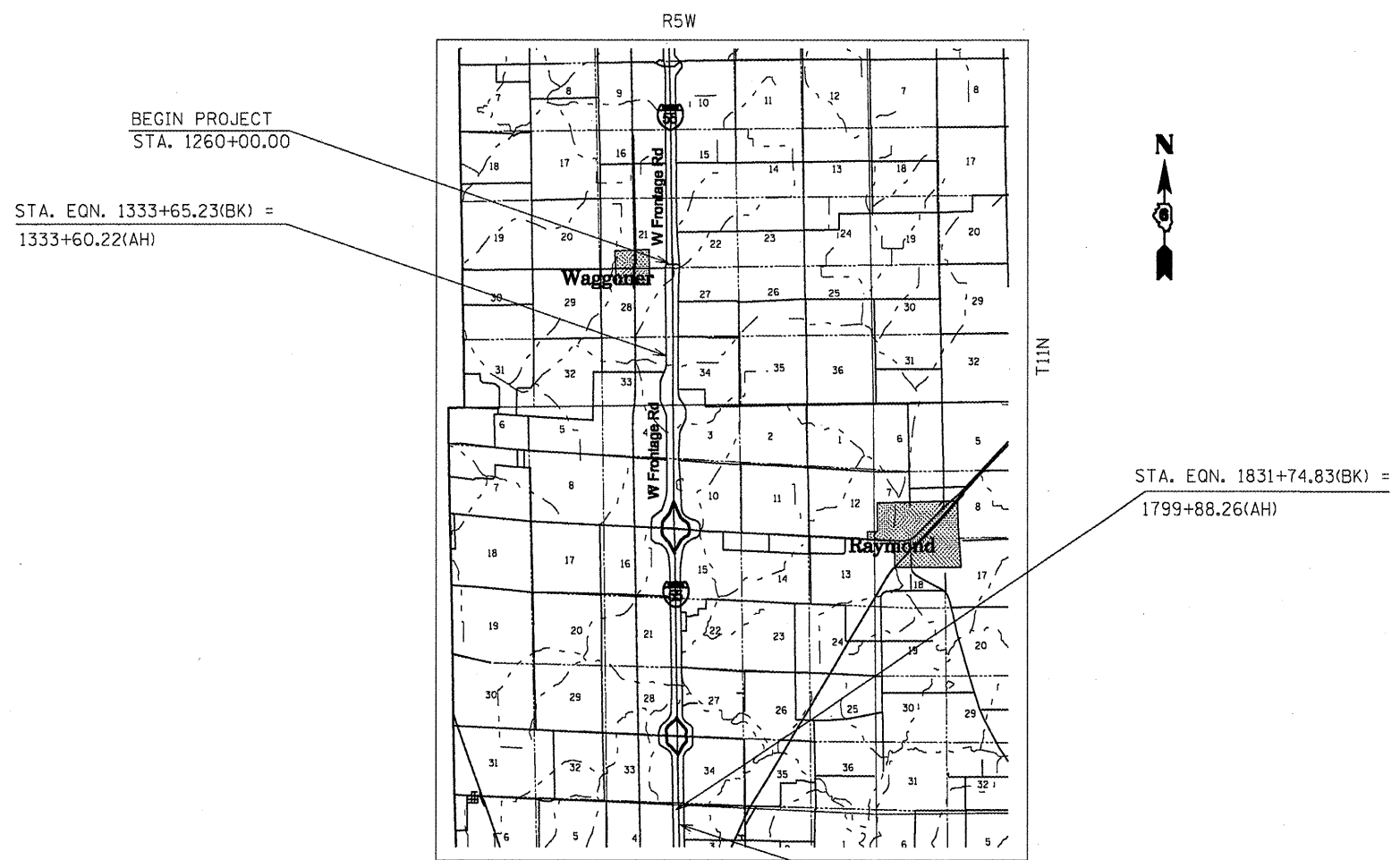


FULL SIZE PLANS HAVE BEEN PREPARED USING STANDARD ENGINEERING SCALES. REDUCED SIZED PLANS WILL NOT CONFORM TO STANDARD SCALES. IN MAKING MEASUREMENTS ON REDUCED PLANS, THE ABOVE SCALES MAY BE USED.

J.U.L.I.E.
JOINT UTILITY LOCATION INFORMATION FOR EXCAVATION
1-800-892-0123
OR 811

PROJECT ENGINEER: JOHN NEGANGARD (217) 782-4760
PROJECT MANAGER: JULIET SHOULTZ (217) 785-2739

CONTRACT NO. 72D93



GROSS LENGTH = 58,608 FT. = 11.1 MILE
NET LENGTH = 50,160 FT. = 9.5 MILE

STATE OF ILLINOIS
DEPARTMENT OF TRANSPORTATION
DIVISION OF HIGHWAYS

SUBMITTED APRIL 26, 20 11
Roger L. Briskell
DEPUTY DIRECTOR OF HIGHWAYS, REGION ENGINEER

May 13 20 11
Scott E. Stitt PE
Acting ENGINEER OF DESIGN AND ENVIRONMENT

May 13 20 11
Christine M. Reed
DIRECTOR OF HIGHWAYS, CHIEF ENGINEER

**PRINTED BY THE AUTHORITY
OF THE STATE OF ILLINOIS**

GENERAL NOTES

1. THE CONTRACTOR SHALL GIVE IDOT OPERATIONS TWO WEEKS NOTICE PRIOR TO STARTING WORK IN ORDER FOR IDOT COMPLETE PATCHING
2. THE CONTRACTOR SHALL BE RESPONSIBLE FOR PROTECTING UTILITY PROPERTY FROM CONSTRUCTION OPERATIONS AS OUTLINED IN ARTICLE 107.31 OF THE STANDARD SPECIFICATIONS. THE J.U.L.I.E. NUMBER IS 800-892-0123. A MINIMUM OF FORTY-EIGHT HOURS ADVANCE NOTICE IS REQUIRED.
3. THE RESIDENT ENGINEER SHALL CONTACT STUDIES AND PLANS CONCERNING ANY MAJOR PLAN CHANGE, TO MAKE SURE NO PREVIOUS COMMITMENTS (NOT LISTED) WERE MADE AFFECTING THE DESIGN AND ALLOW AN IMPROVED DESIGN FOR FUTURE PROJECTS.
4. THE DISTRICT BUREAU OF OPERATIONS SHALL BE NOTIFIED AT LEAST 14 DAYS PRIOR TO PLACEMENT OF FINAL PAVEMENT MARKINGS. PHONE (217) 782-7314

STANDARDS

- 701301-04
- 701306-03
- 701311-03
- 701901-01
- 780001-02

APPLICATION RATES

BITUMINOUS MATERIALS (COVER AND SEAL COAT) 0.001425 Ton/sq yd
 SEAL COAT AGGREGATE 0.01 Ton/sq yd

DISTRICT SIX	
EXAMINED <u>March 21</u>	20 <u>11</u>
<i>David Walker</i>	
OPERATIONS ENGINEER	
EXAMINED <u>MARCH 16</u>	20 <u>11</u>
<i>John F. ...</i>	
PROJECT IMPLEMENTATION ENGINEER	
EXAMINED <u>MARCH 10</u>	20 <u>11</u>
<i>John C. ...</i>	
PROGRAM DEVELOPMENT ENGINEER	

FILE NAME =	USER NAME = shultzjr	DESIGNED -	REVISED -
cr:\pw\work\pwi\dot\katusebejr\d0229974\0672093-shl-gennote.dgn		DRAWN -	REVISED -
PLOT SCALE = 40.0000' / IN.		CHECKED -	REVISED -
PLOT DATE = Mar-31-2011 09:30:19AM		DATE -	REVISED -

**STATE OF ILLINOIS
DEPARTMENT OF TRANSPORTATION**

GENERAL NOTES			
SCALE:	SHEET NO.	OF SHEETS	STA. TO STA.

F.A.S. RTE.	SECTION	COUNTY	TOTAL SHEETS	SHEET NO.
1741	1120	MONTGOMERY	24	2
CONTRACT NO. 72D93				
ILLINOIS FED. AID PROJECT				

CODE NO.	ITEM	UNIT	TOTAL	100% STATE DE-MISC CONST CODE 0005
40300405	POLYMERIZED BITUMINOUS MATERIALS (COVERS AND SEAL COATS)	TON	190	190
40300600	SEAL COAT AGGREGATE	TON	1,333	1,333
67100100	MOBILIZATION	L SUM	1	1
70100460	TRAFFIC CONTROL AND PROTECTION, STANDARD 701306	L SUM	1	1
*78001120	PAINT PAVEMENT MARKING - LINE 5"	FOOT	112,511	112,511

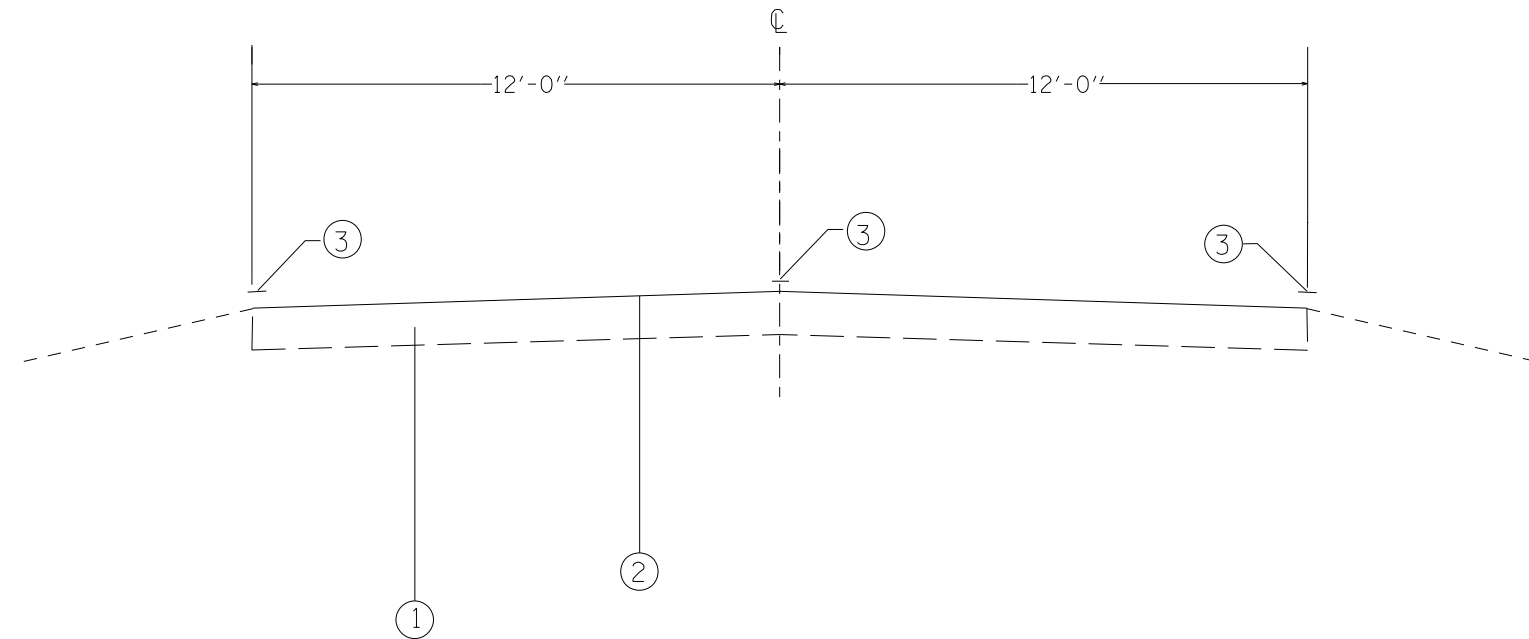
* SPECIALTY ITEM

FILE NAME = c:\pwwork\pwwork\sparksgu\d0229974\067	USER NAME = Sparksgu D093-shr-S00.dgn	DESIGNED -	REVISED -	STATE OF ILLINOIS DEPARTMENT OF TRANSPORTATION	SUMMARY OF QUANTITIES	F.A.S RTE.	SECTION	COUNTY	TOTAL SHEETS	SHEET NO.
PLOT SCALE = 40.0000' / in.	CHECKED -	REVISED -	174J			1120	MONTGOMERY	24	3	
PLOT DATE = Apr-26-2011 11:01:27AM	DATE -	REVISED -	CONTRACT NO. 72D93			ILLINOIS FED. AID PROJECT				
SCALE:		SHEET NO. OF SHEETS				STA. TO STA.				

STA to STA**		LENGTH (FT)	WIDTH (FT)	AREA (SY)	BITUMINOUS MAT'LS SEAL COAT (TON)	SEAL COAT AGGREGATE (TON)	PAINT PVT MARKING (FT)
1260+00	1814+05.56	50,005	24	133,347	190	1333	112,511

****LOCATIONS WITHIN THIS STATION RANGE TO BE DESIGNATED BY RESIDENT ENGINEER AT TIME OF CONSTRUCTION**

FILE NAME =	USER NAME = Sparksgw	DESIGNED -	REVISED -	STATE OF ILLINOIS DEPARTMENT OF TRANSPORTATION	SCHEDULE OF QUANTITIES	F.A.S RTE.	SECTION	COUNTY	TOTAL SHEETS	SHEET NO.
c:\pwork\work\pwork\sparksgw\10229974\10672093-sht-schedule.dgn	DRAWN -	REVISED -	1741			1120	MONTGOMERY	24	4	
PLOT SCALE = 40.0000' / in.	CHECKED -	REVISED -	CONTRACT NO. 72D93							
PLOT DATE = Apr-26-2011 11:01:36AM	DATE -	REVISED -	ILLINOIS FED. AID PROJECT							
				SCALE:	SHEET NO. OF SHEETS	STA.	TO STA.			

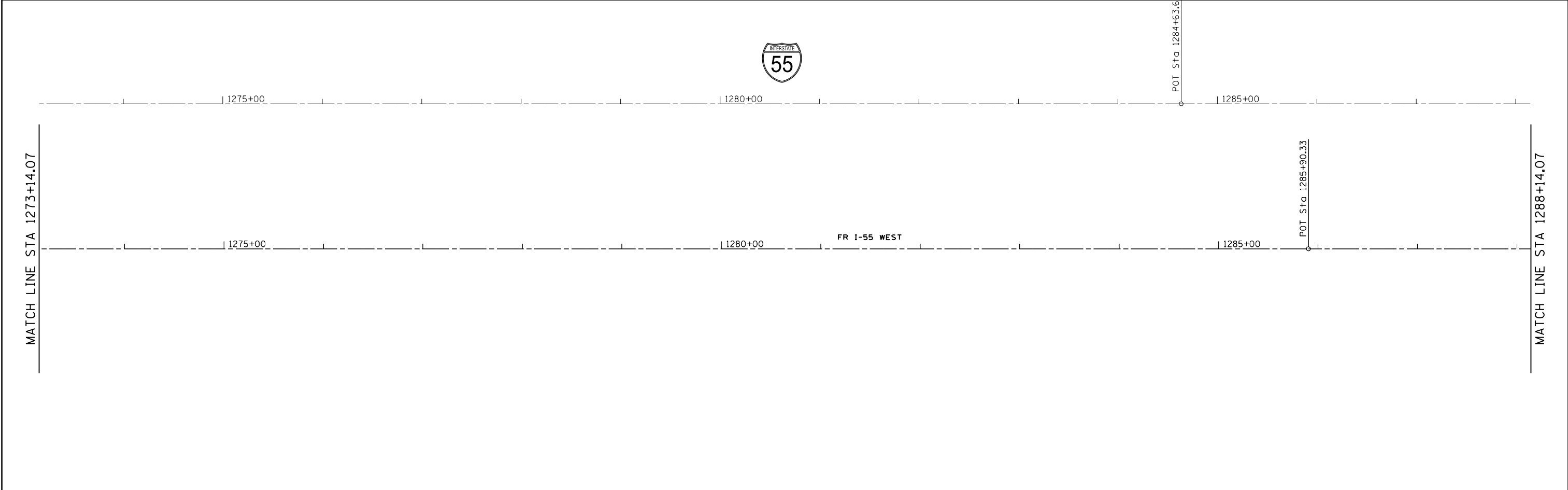
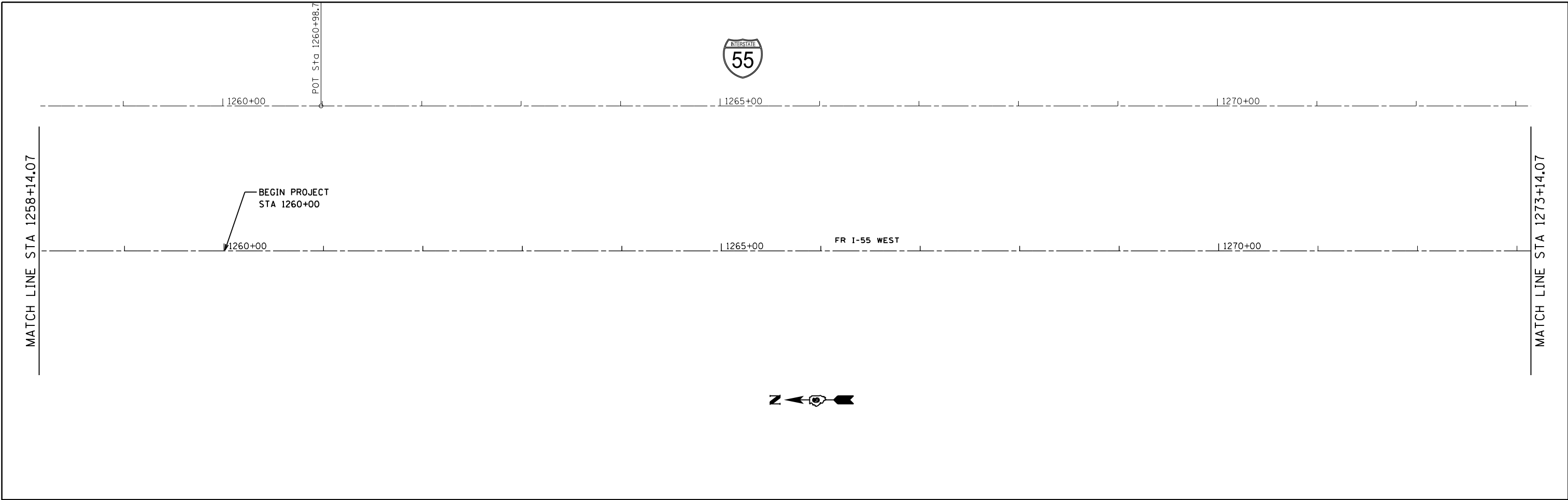


LEGEND

- ① EX PCC PAVEMENT, 10"
- ② PR BITUMINOUS SURFACE TREATMENT, A-1
- ③ PR PAVEMENT MARKING

STA. 1260+00 TO STA. 1333+65.23
 STATION EQN. 1333+65.23(BK) = 1333+60.22(AH)
 STA. 1333+60.22 TO STA. 1831+74.83
 STATION EQN. 1831+74.83(BK) = 1799+88.26(AH)
 STA. 1799+88.26 TO STA. 1814+05.56

FILE NAME = c:\pwork\pwork\sparksgw\10229974\10672093-shr-typic01.dgn	USER NAME = sparksgw	DESIGNED -	REVISED -	STATE OF ILLINOIS DEPARTMENT OF TRANSPORTATION	TYPICAL SECTION			F.A.S. RTE.	SECTION	COUNTY	TOTAL SHEETS	SHEET NO.
	PLOT SCALE = 20.0000' / in.	CHECKED -	REVISED -					1741	1120	MONTGOMERY	24	5
PLOT DATE = Apr-26-2011 11:01:47AM	DATE -	REVISED -	SCALE:		SHEET NO.	OF	SHEETS	STA.	TO	STA.	ILLINOIS FED. AID PROJECT	
										CONTRACT NO. 72D93		



FILE NAME =	USER NAME = Sparksgw	DESIGNED -	REVISED -
ei:\pw\work\p\idot\sparksgw\10229974\0672093-sht-plan41.dgn		DRAWN -	REVISED -
	PLOT SCALE = 100.0000' / in.	CHECKED -	REVISED -
	PLOT DATE = Apr-26-2011 11:01:58AM	DATE -	REVISED -

**STATE OF ILLINOIS
DEPARTMENT OF TRANSPORTATION**

PLAN SHEET			
SCALE:	SHEET NO.	OF SHEETS	STA. TO STA.

F.A.S RTE.	SECTION	COUNTY	TOTAL SHEETS	SHEET NO.
1741	1120	MONTGOMERY	24	6
CONTRACT NO. 72D93				
ILLINOIS FED. AID PROJECT				



1290+00

1295+00

1300+00

MATCH LINE STA 1288+14.07

1290+00

1295+00

FR I-55 WEST

1300+00

MATCH LINE STA 1303+14.07



1305+00

1310+00

1315+00

POT Sta 1316+04.4

MATCH LINE STA 1303+14.07

1305+00

1310+00

FR I-55 WEST

1315+00

MATCH LINE STA 1318+14.07

FILE NAME =	USER NAME = Sparksgw	DESIGNED -	REVISED -
ei:\pw\work\p\idot\sparksgw\10229974\0672093-sht-plan41.dgn		DRAWN -	REVISED -
	PLOT SCALE = 100.0000' / in.	CHECKED -	REVISED -
	PLOT DATE = Apr-26-2011 11:01:58AM	DATE -	REVISED -

**STATE OF ILLINOIS
DEPARTMENT OF TRANSPORTATION**

PLAN SHEET

SCALE: SHEET NO. OF SHEETS STA. TO STA.

F.A.S RTE.	SECTION	COUNTY	TOTAL SHEETS	SHEET NO.
1741	1120	MONTGOMERY	24	7
CONTRACT NO. 72D93			ILLINOIS FED. AID PROJECT	



1320+00 1325+00 1330+00

MATCH LINE STA 1318+14.07

MATCH LINE STA 1333+14.07

FR I-55 WEST

1320+00 1325+00 1330+00



1335+00 1340+00 1345+00

MATCH LINE STA 1333+14.07

MATCH LINE STA 1348+14.07

FR I-55 WEST

1335+00 1340+00 1345+00

EXIST. CURVE 5
 PI STA. = 1339+51.89
 Δ = 0° 23' 44" (RT)
 D = 0° 02' 00"
 R = 171,438.49'
 T = 591.67'
 L = 1,183.33'
 E = 1.02'

EXIST. CURVE 10004
 PI STA. = 1339+61.91
 Δ = 0° 23' 40" (RT)
 θ = 0° 02' 00"
 R = 171,887.63'
 T = 591.67'
 L = 1,183.34'
 E = 1.02'

S.E. RUN =
 P.C. STA. = 1333+70.24
 P.T. STA. = 1345+53.58

STATION EQUATION:
 Sta 1333+65.23 BK =
 Sta 1333+60.22 AH

PC Sta 1333+60.23
 POT Sta 1333+63.55

POT Sta 1333+65.23
 PC Sta 1333+70.24

PI Sta 1339+51.89

PI Sta 1339+61.91

PT Sta 1345+43.56

PT Sta 1345+53.58

FILE NAME = c:\pwwork\pwwid\sparksgw\10229974\0672093-sht-plan41.dgn	USER NAME = Sparksgw	DESIGNED -	REVISED -
		DRAWN -	REVISED -
	PLOT SCALE = 100.0000' / in.	CHECKED -	REVISED -
	PLOT DATE = Apr-26-2011 11:01:59AM	DATE -	REVISED -

STATE OF ILLINOIS
 DEPARTMENT OF TRANSPORTATION

PLAN SHEET

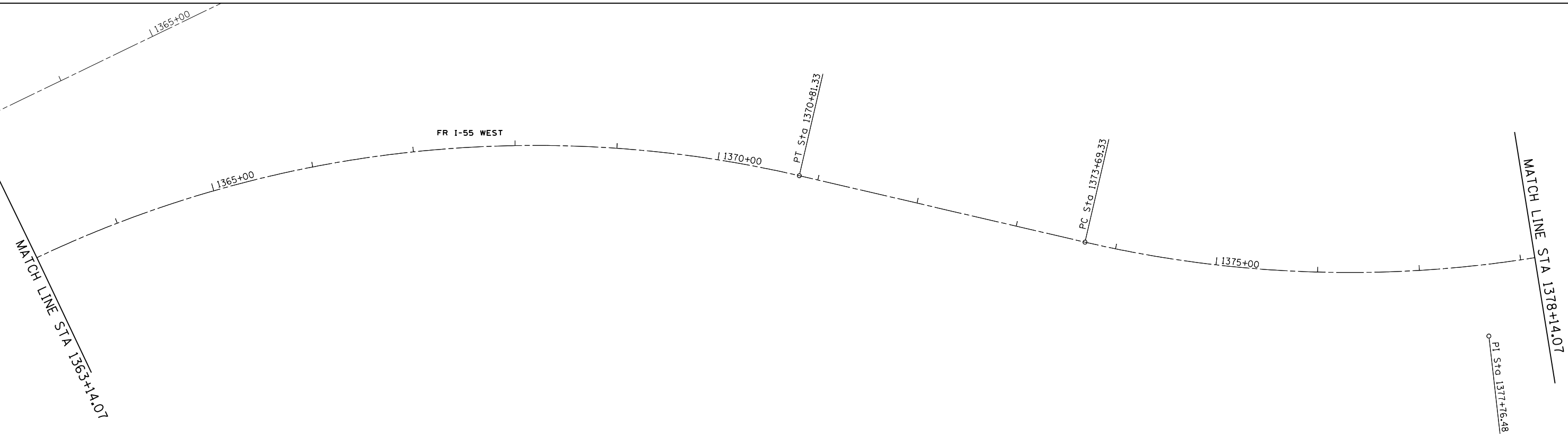
SCALE: SHEET NO. OF SHEETS STA. TO STA.

F.A.S. RTE.	SECTION	COUNTY	TOTAL SHEETS	SHEET NO.
1741	1120	MONTGOMERY	24	8
CONTRACT NO. 72D93				
ILLINOIS FED. AID PROJECT				



1350+00 1355+00 1360+00

MATCH LINE STA 1348+14.07 1350+00 1355+00 FR I-55 WEST 1360+00 PC Sta 1363+05.66 MATCH LINE STA 1363+14.07



FILE NAME =	USER NAME = Sparksgw	DESIGNED -	REVISED -
c:\pw\work\p\dot\sparksgw\10229974\0672093-sht-plan41.dgn		DRAWN -	REVISED -
	PLOT SCALE = 100.0000' / in.	CHECKED -	REVISED -
	PLOT DATE = Apr-26-2011 11:01:59AM	DATE -	REVISED -

**STATE OF ILLINOIS
DEPARTMENT OF TRANSPORTATION**

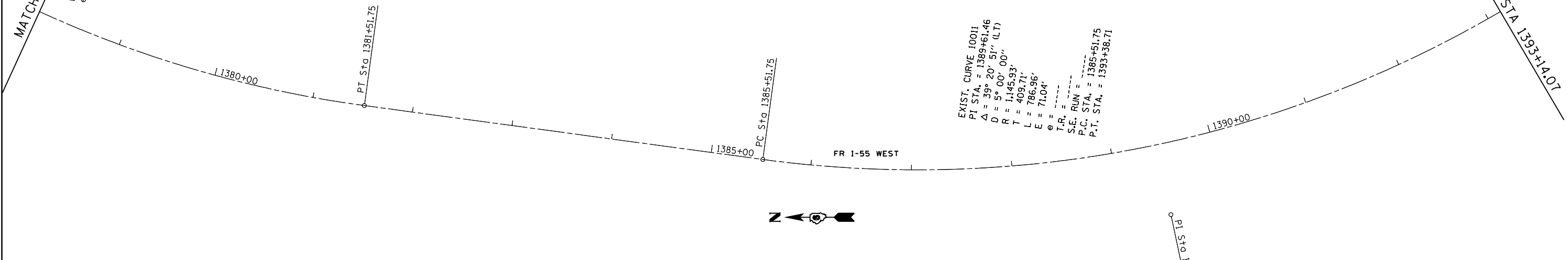
PLAN SHEET			
SCALE:	SHEET NO.	OF SHEETS	STA. TO STA.

F.A.S. RTE.	SECTION	COUNTY	TOTAL SHEETS	SHEET NO.
1741	1120	MONTGOMERY	24	9
CONTRACT NO. 72D93				
ILLINOIS FED. AID PROJECT				

MATCH LINE STA 1378+14.07
 E = 70.18'
 e = -----

MATCH LINE STA 1393+14.07

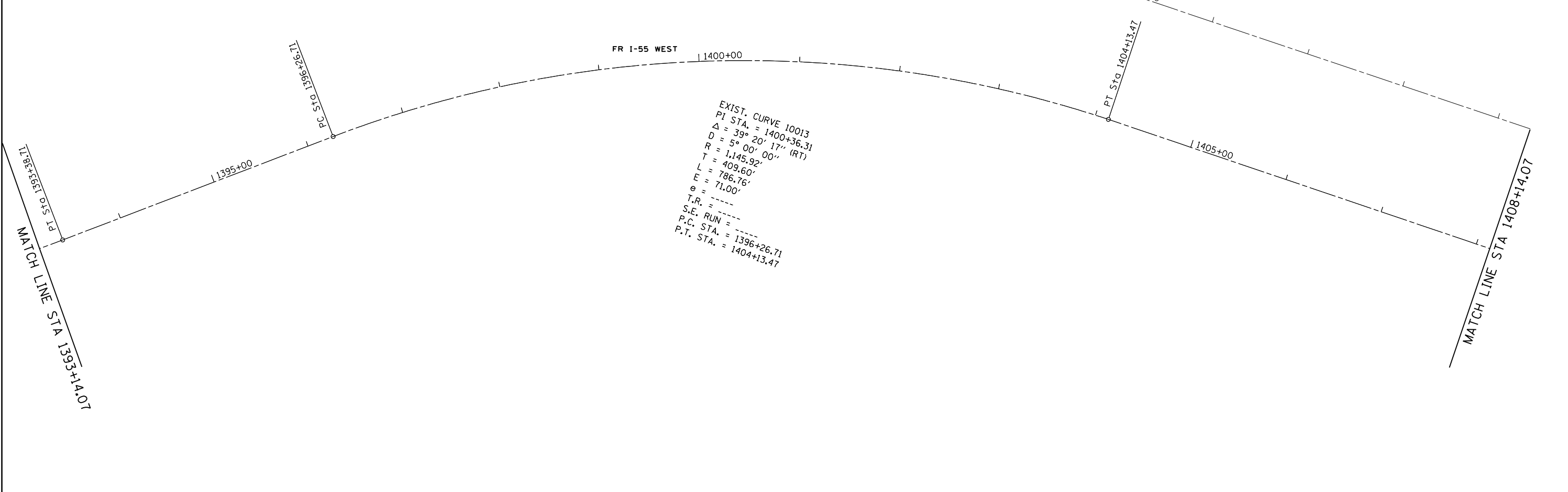
EXIST. CURVE 10011
 PI STA. = 1389+61.46
 Δ = 39° 20' 51" (L.T)
 D = 5° 00' 00"
 R = 1,145.93'
 T = 409.71'
 L = 786.96'
 E = 71.04'
 e = -----
 T.R. = -----
 S.E. RUN = -----
 P.C. STA. = 1385+51.75
 P.T. STA. = 1393+38.71



MATCH LINE STA 1393+14.07
 PT Sta 1393+14.07

MATCH LINE STA 1408+14.07

EXIST. CURVE 10013
 PI STA. = 1400+36.31
 Δ = 39° 20' 17" (RT)
 D = 5° 00' 00"
 R = 1,145.92'
 T = 409.60'
 L = 786.76'
 E = 71.00'
 e = -----
 T.R. = -----
 S.E. RUN = -----
 P.C. STA. = 1396+26.71
 P.T. STA. = 1404+13.47



FILE NAME =	USER NAME = Sparksgw	DESIGNED -	REVISED -
ei:\pw\work\p\midot\sparksgw\10229974\10672093-sht-plan41.dgn		DRAWN -	REVISED -
PLOT SCALE = 100.0000' / in.		CHECKED -	REVISED -
PLOT DATE = Apr-26-2011 11:02:00AM		DATE -	REVISED -

**STATE OF ILLINOIS
 DEPARTMENT OF TRANSPORTATION**

PLAN SHEET			
SCALE:	SHEET NO.	OF SHEETS	STA. TO STA.

F.A.S RTE.	SECTION	COUNTY	TOTAL SHEETS	SHEET NO.
1741	1120	MONTGOMERY	24	10
CONTRACT NO. 72D93				
ILLINOIS FED. AID PROJECT				



1405+00

1410+00

1415+00

MATCH LINE STA 1408+14.07

1410+00

1415+00

FR I-55 WEST

1420+00

MATCH LINE STA 1423+14.07



POT Sta. 1426+76.38

1420+00

1425+00

1430+00

MATCH LINE STA 1423+14.07

1425+00

1430+00

FR I-55 WEST

1435+00

MATCH LINE STA 1438+14.07

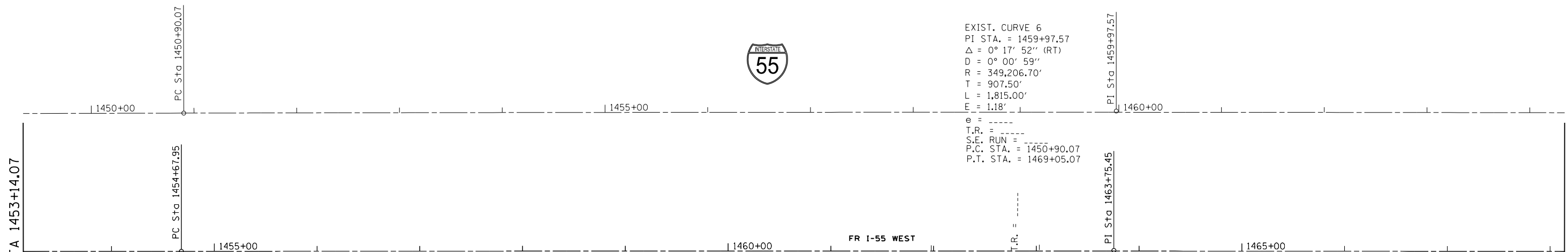
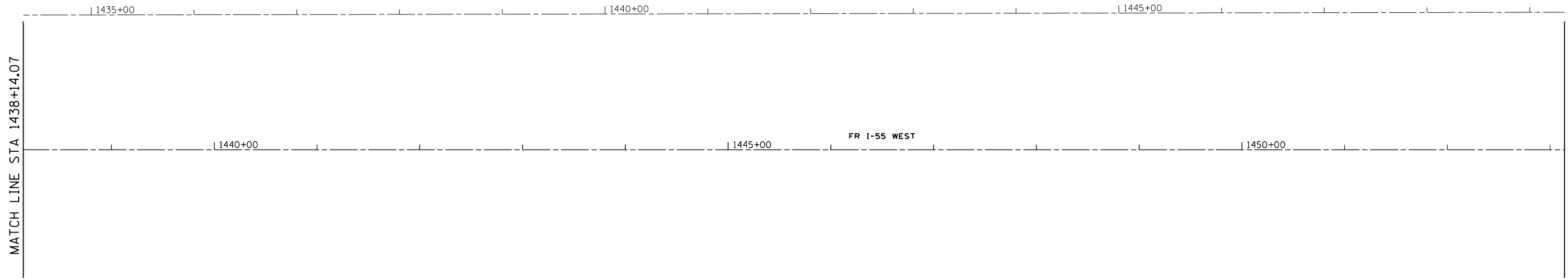
FILE NAME =	USER NAME = Sparksgw	DESIGNED -	REVISED -
ei:\pw\work\p\dot\sparksgw\10229974\0672093-sht-plan41.dgn		DRAWN -	REVISED -
	PLOT SCALE = 100.0000' / in.	CHECKED -	REVISED -
	PLOT DATE = Apr-26-2011 11:02:01AM	DATE -	REVISED -

**STATE OF ILLINOIS
DEPARTMENT OF TRANSPORTATION**

PLAN SHEET

SCALE: SHEET NO. OF SHEETS STA. TO STA.

F.A.S RTE.	SECTION	COUNTY	TOTAL SHEETS	SHEET NO.
1741	1120	MONTGOMERY	24	11
CONTRACT NO. 72D93				
ILLINOIS FED. AID PROJECT				



EXIST. CURVE 6
 PI STA. = 1459+97.57
 Δ = 0° 17' 52" (RT)
 D = 0° 00' 59"
 R = 349,206.70'
 T = 907.50'
 L = 1,815.00'
 E = 1.18'

e = ----
 T.R. = ----
 S.E. RUN = ----
 P.C. STA. = 1450+90.07
 P.T. STA. = 1469+05.07

EXIST. CURVE 10016
 PI STA. = 1463+75.45
 Δ = 0° 08' 56" (RT)
 D = 0° 00' 30"
 R = 698,215.36'
 T = 907.50'
 L = 1,815.00'
 E = 0.59'

e = ----
 T.R. = ----
 S.E. RUN = ----
 P.C. STA. = 1454+67.95
 P.T. STA. = 1472+82.94

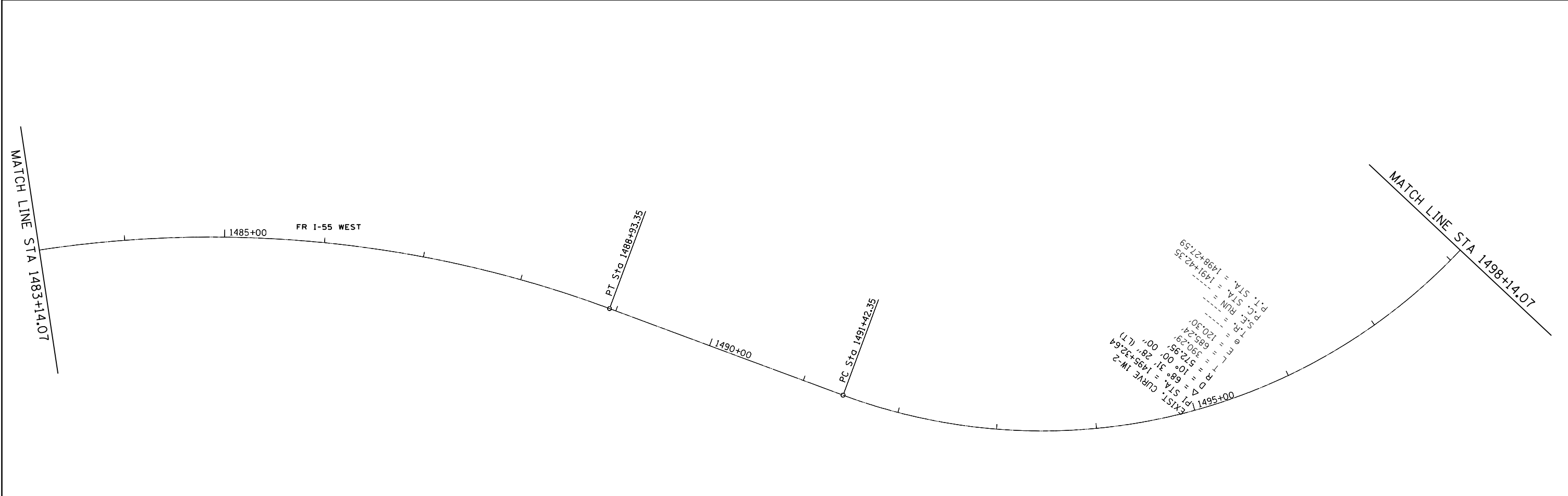
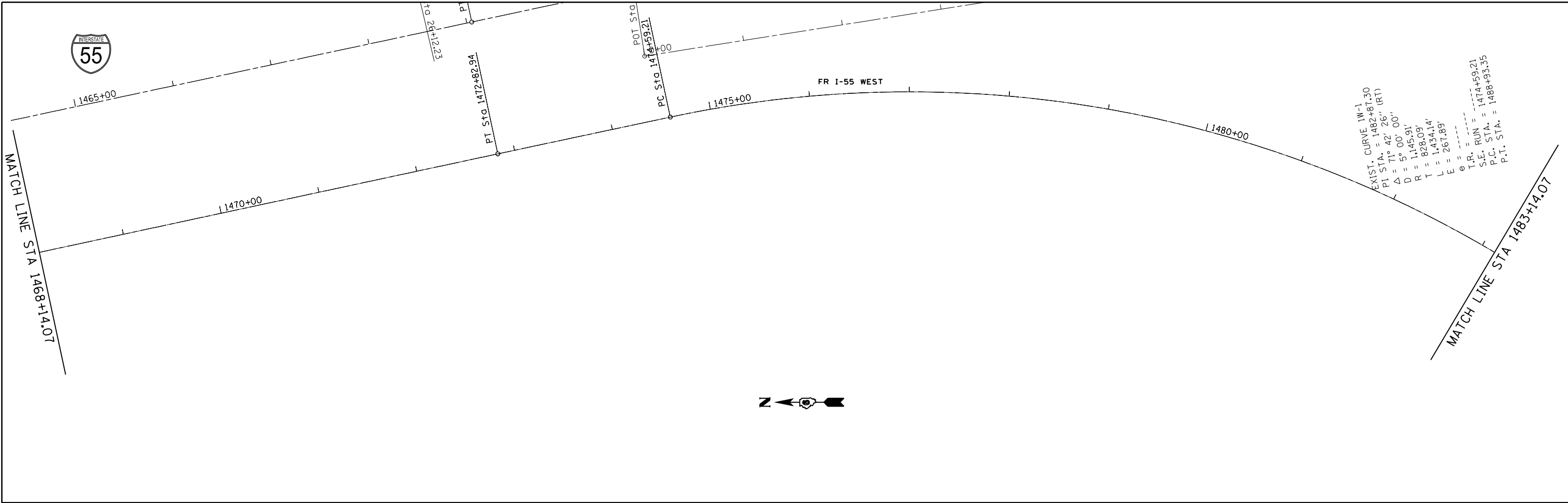
FILE NAME =	USER NAME = Sparksgw	DESIGNED -	REVISED -
ei:\pw\work\p\dot\sparksgw\10229974\0672093-sht-plan41.dgn		DRAWN -	REVISED -
	PLOT SCALE = 100.0000' / in.	CHECKED -	REVISED -
	PLOT DATE = Apr-26-2011 11:02:01AM	DATE -	REVISED -

STATE OF ILLINOIS
 DEPARTMENT OF TRANSPORTATION

PLAN SHEET

SCALE: SHEET NO. OF SHEETS STA. TO STA.

F.A.S. RTE.	SECTION	COUNTY	TOTAL SHEETS	SHEET NO.
1741	1120	MONTGOMERY	24	12
CONTRACT NO. 72D93				
ILLINOIS FED. AID PROJECT				

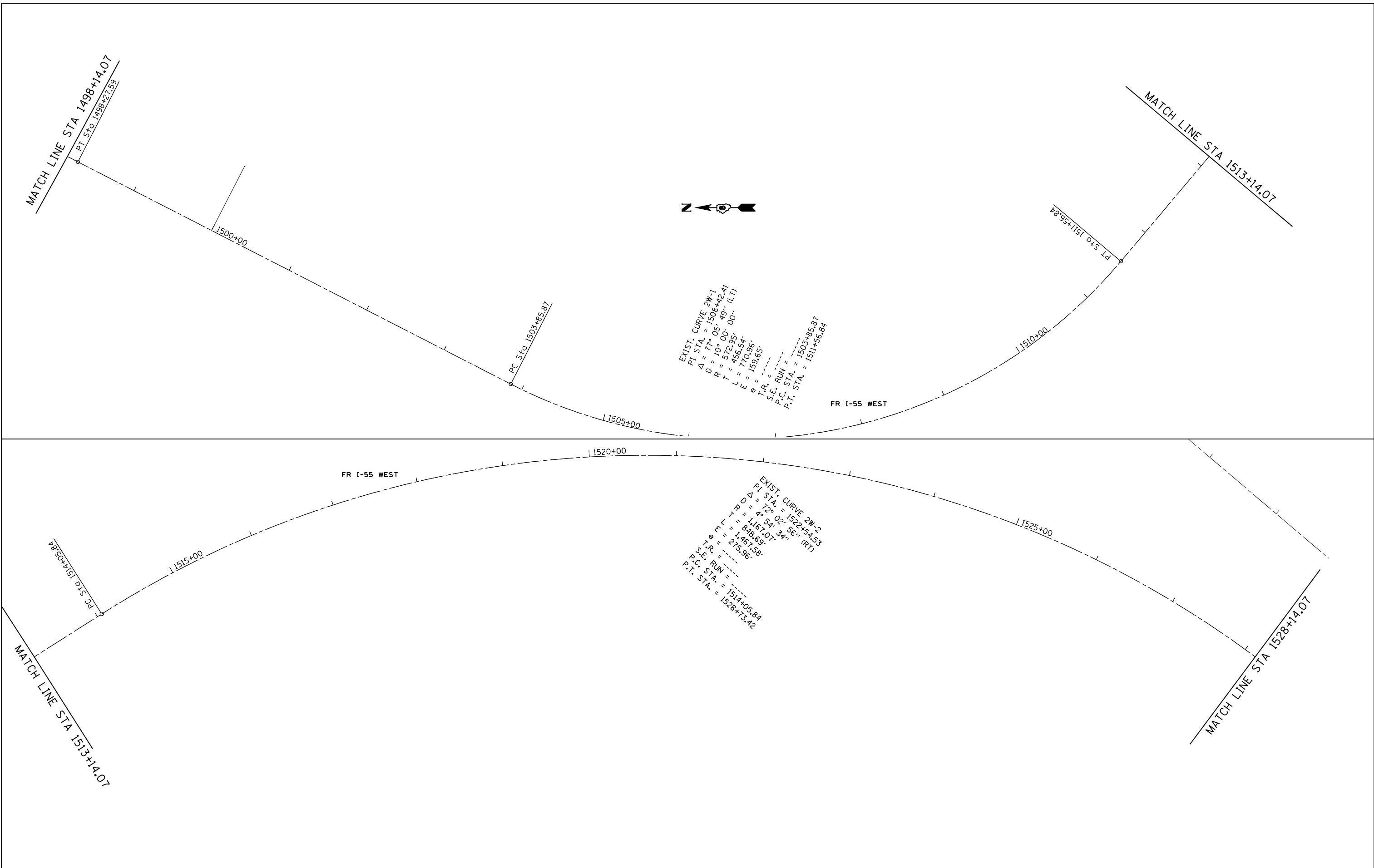


FILE NAME =	USER NAME = Sparksgw	DESIGNED -	REVISED -
c:\pwwork\pwwork\sparksgw\10229974\10672093-sht-plan41.dgn		DRAWN -	REVISED -
PLOT SCALE = 100.0000' / in.		CHECKED -	REVISED -
PLOT DATE = Apr-26-2011 11:02:02AM		DATE -	REVISED -

STATE OF ILLINOIS
DEPARTMENT OF TRANSPORTATION

PLAN SHEET			
SCALE:	SHEET NO.	OF SHEETS	STA. TO STA.

F.A.S. RTE.	SECTION	COUNTY	TOTAL SHEETS	SHEET NO.
1741	1120	MONTGOMERY	24	13
CONTRACT NO. 72D93			ILLINOIS FED. AID PROJECT	

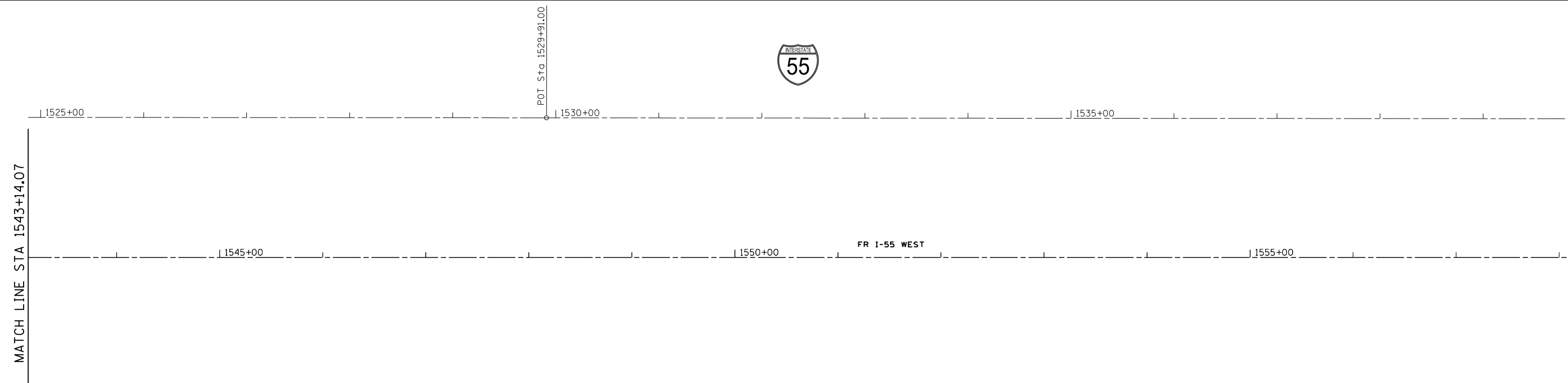
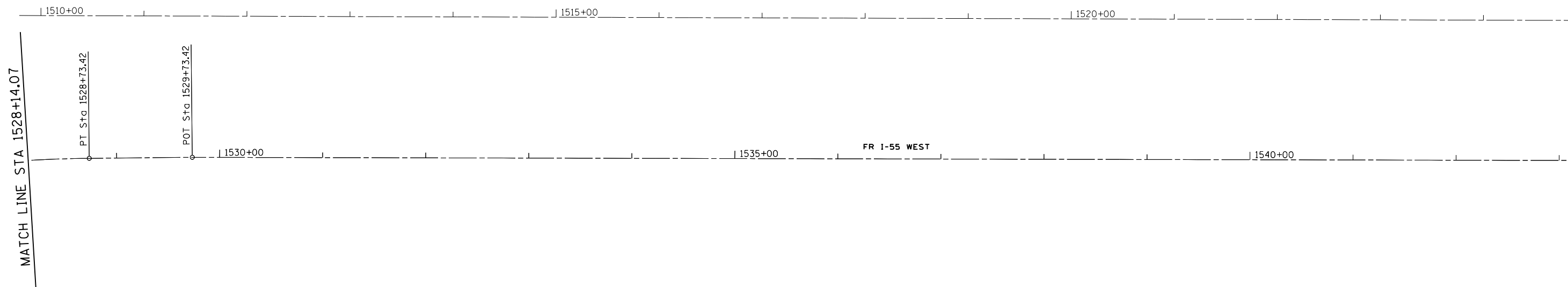


FILE NAME =	USER NAME = sparksgw	DESIGNED -	REVISED -
c:\pwwork\pwwork\sparksgw\10229974\10672093-sht-plan41.dgn		DRAWN -	REVISED -
PLOT SCALE = 100.0000' / in.		CHECKED -	REVISED -
PLOT DATE = Apr-26-2011 11:02:03AM		DATE -	REVISED -

**STATE OF ILLINOIS
DEPARTMENT OF TRANSPORTATION**

PLAN SHEET			
SCALE:	SHEET NO.	OF SHEETS	STA. TO STA.

F.A.S. RTE.	SECTION	COUNTY	TOTAL SHEETS	SHEET NO.
1741	1120	MONTGOMERY	24	14
CONTRACT NO. 72D93				
ILLINOIS FED. AID PROJECT				



FILE NAME =	USER NAME = Sparksgw	DESIGNED -	REVISED -
c:\pwwork\pwwork\sparksgw\0229974\0672093-sht-plan41.dgn		DRAWN -	REVISED -
	PLOT SCALE = 100.0000' / in.	CHECKED -	REVISED -
	PLOT DATE = Apr-26-2011 11:02:03AM	DATE -	REVISED -

**STATE OF ILLINOIS
DEPARTMENT OF TRANSPORTATION**

PLAN SHEET

SCALE: SHEET NO. OF SHEETS STA. TO STA.

F.A.S RTE.	SECTION	COUNTY	TOTAL SHEETS	SHEET NO.
1741	1120	MONTGOMERY	24	15
CONTRACT NO. 72D93			ILLINOIS FED. AID PROJECT	



1540+00 1545+00 1550+00

MATCH LINE STA 1558+14.07

1560+00 1565+00 1570+00

FR I-55 WEST

MATCH LINE STA 1573+14.07



1555+00 1560+00 1565+00

MATCH LINE STA 1573+14.07

1575+00 1580+00 1585+00

FR I-55 WEST

MATCH LINE STA 1588+14.07

POT Sta 1565+56.25

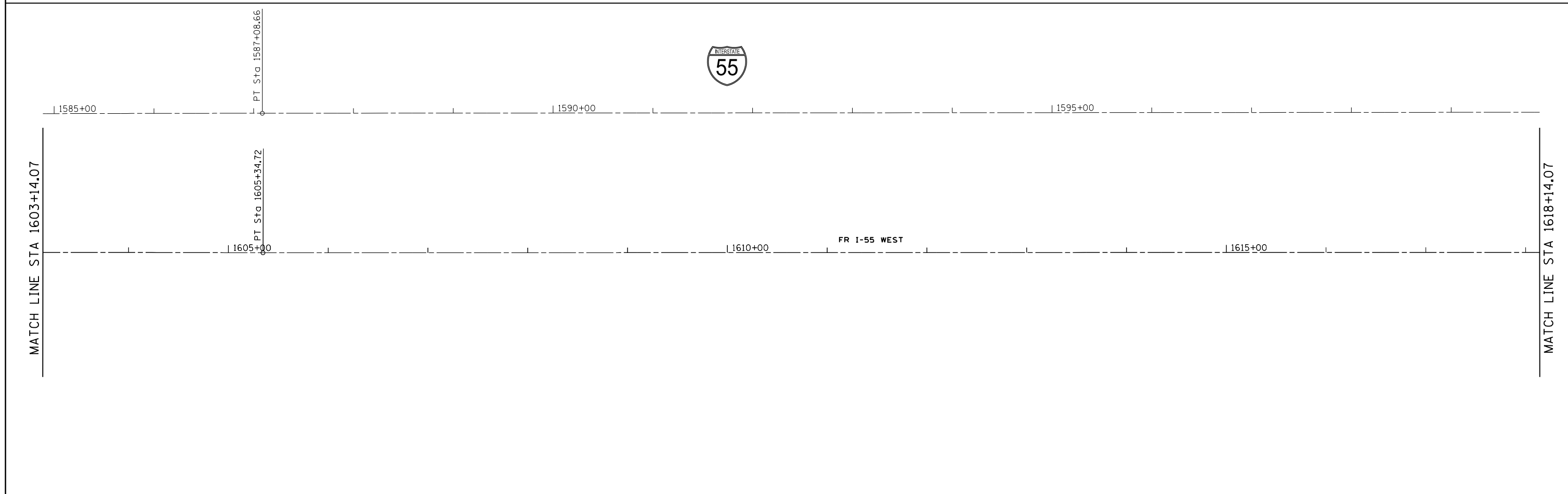
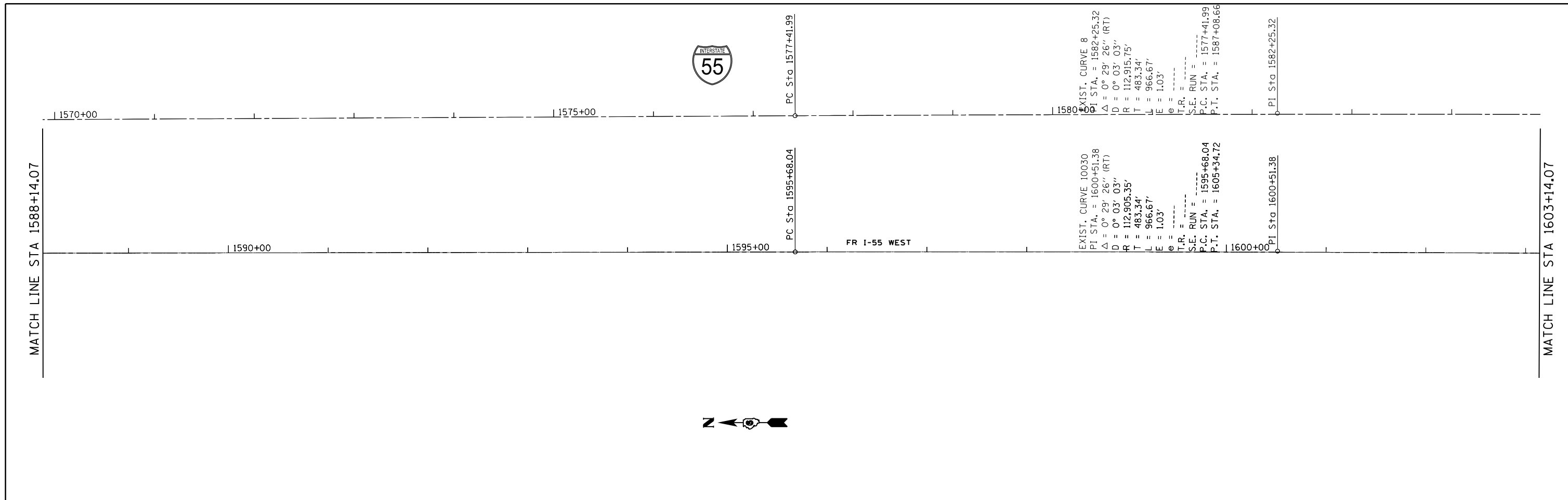
FILE NAME =	USER NAME = Sparksgw	DESIGNED -	REVISED -
ei:\pw\work\p\idot\sparksgw\0229974\0672093-sht-plan41.dgn		DRAWN -	REVISED -
	PLOT SCALE = 100.0000' / in.	CHECKED -	REVISED -
	PLOT DATE = Apr-26-2011 11:02:04AM	DATE -	REVISED -

STATE OF ILLINOIS
DEPARTMENT OF TRANSPORTATION

PLAN SHEET

SCALE: SHEET NO. OF SHEETS STA. TO STA.

F.A.S RTE.	SECTION	COUNTY	TOTAL SHEETS	SHEET NO.
1741	1120	MONTGOMERY	24	16
CONTRACT NO. 72D93			ILLINOIS FED. AID PROJECT	



FILE NAME =	USER NAME = Sparksgw	DESIGNED -	REVISED -	STATE OF ILLINOIS DEPARTMENT OF TRANSPORTATION	PLAN SHEET			F.A.S. RTE.	SECTION	COUNTY	TOTAL SHEETS	SHEET NO.			
c:\pwwork\pwwork\sparksgw\10229974\10672093-sht-plan41.dgn		DRAWN -	REVISED -		SCALE:	SHEET NO.	OF	SHEETS	STA.	TO STA.	1741	1120	MONTGOMERY	24	17
		CHECKED -	REVISED -		CONTRACT NO. 72D93										
		DATE -	REVISED -		ILLINOIS FED. AID PROJECT										

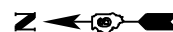


1600+00 1605+00 1610+00

MATCH LINE STA 1618+14.07

1620+00 1625+00 FR 1-55 WEST 1630+00

MATCH LINE STA 1633+14.07



1615+00 1620+00 1625+00

MATCH LINE STA 1633+14.07

1635+00 1640+00 FR 1-55 WEST 1645+00

MATCH LINE STA 1648+14.07

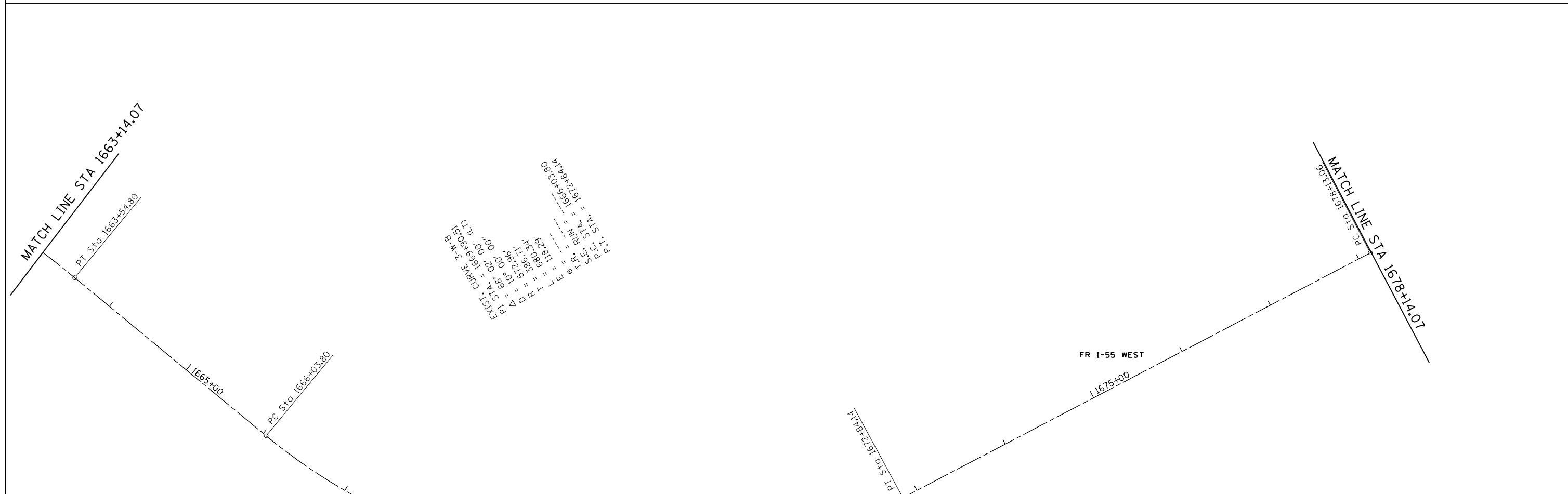
FILE NAME =	USER NAME = Sparksgw	DESIGNED -	REVISED -
ei:\pw\work\p\dot\sparksgw\10229974\0672093-sht-plan41.dgn		DRAWN -	REVISED -
	PLOT SCALE = 100.0000' / in.	CHECKED -	REVISED -
	PLOT DATE = Apr-26-2011 11:02:05AM	DATE -	REVISED -

STATE OF ILLINOIS
DEPARTMENT OF TRANSPORTATION

PLAN SHEET

SCALE: SHEET NO. OF SHEETS STA. TO STA.

F.A.S RTE.	SECTION	COUNTY	TOTAL SHEETS	SHEET NO.
1741	1120	MONTGOMERY	24	18
CONTRACT NO. 72D93			ILLINOIS FED. AID PROJECT	



FILE NAME =	USER NAME = sparksgw	DESIGNED -	REVISED -	STATE OF ILLINOIS DEPARTMENT OF TRANSPORTATION	PLAN SHEET			F.A.S. RTE.	SECTION	COUNTY	TOTAL SHEETS	SHEET NO.
ei:\pw\work\p\idot\sparksgw\10229974\10672093-sht-plan41.dgn		DRAWN -	REVISED -		1741	1120	MONTGOMERY	24	19			
	PLOT SCALE = 100.0000' / in.	CHECKED -	REVISED -		CONTRACT NO. 72D93							
	PLOT DATE = Apr-26-2011 11:02:06AM	DATE -	REVISED -		ILLINOIS FED. AID PROJECT							



1680+00

1685+00

1690+00

MATCH LINE STA 1708+14.07

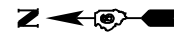
1710+00

1715+00

FR I-55 WEST

1720+00

MATCH LINE STA 1723+14.07



1695+00

1700+00

1705+00

MATCH LINE STA 1723+14.07

1725+00

1730+00

FR I-55 WEST

1735+00

MATCH LINE STA 1738+14.07

FILE NAME =	USER NAME = Sparksgw	DESIGNED -	REVISED -
ei:\pw\work\p\dot\sparksgw\10229974\0672093-sht-plan41.dgn		DRAWN -	REVISED -
	PLOT SCALE = 100.0000' / in.	CHECKED -	REVISED -
	PLOT DATE = Apr-26-2011 11:02:07AM	DATE -	REVISED -

**STATE OF ILLINOIS
DEPARTMENT OF TRANSPORTATION**

PLAN SHEET

SCALE: SHEET NO. OF SHEETS STA. TO STA.

F.A.S RTE.	SECTION	COUNTY	TOTAL SHEETS	SHEET NO.
1741	1120	MONTGOMERY	24	21
CONTRACT NO. 72D93			ILLINOIS FED. AID PROJECT	



POT Sta 1708+50.10

1710+00

1715+00

1720+00

MATCH LINE STA 1738+14.07

1740+00

1745+00

FR I-55 WEST

1750+00

MATCH LINE STA 1753+14.07



POT Sta 1733+84.01

1725+00

1730+00

1735+00

MATCH LINE STA 1753+14.07

1755+00

1760+00

FR I-55 WEST

1765+00

MATCH LINE STA 1768+14.07

FILE NAME =	USER NAME = Sparksgw	DESIGNED -	REVISED -
ei:\pw\work\p\idot\sparksgw\10229974\0672093-sht-plan41.dgn		DRAWN -	REVISED -
	PLOT SCALE = 100.0000' / 1in.	CHECKED -	REVISED -
	PLOT DATE = Apr-26-2011 11:02:07AM	DATE -	REVISED -

**STATE OF ILLINOIS
DEPARTMENT OF TRANSPORTATION**

PLAN SHEET

SCALE: SHEET NO. OF SHEETS STA. TO STA.

F.A.S RTE.	SECTION	COUNTY	TOTAL SHEETS	SHEET NO.
1741	1120	MONTGOMERY	24	22
CONTRACT NO. 72D93			ILLINOIS FED. AID PROJECT	



1740+00

1745+00

1750+00

MATCH LINE STA 1768+14.07

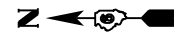
1770+00

1775+00

FR I-55 WEST

1780+00

MATCH LINE STA 1783+14.07



1755+00

1760+00

1765+00

MATCH LINE STA 1783+14.07

1785+00

1790+00

FR I-55 WEST

1795+00

MATCH LINE STA 1798+14.07

FILE NAME =	USER NAME = Sparksgw	DESIGNED -	REVISED -
ei:\pw\work\p\dot\sparksgw\10229974\0672093-sht-plan41.dgn		DRAWN -	REVISED -
	PLOT SCALE = 100.0000' / in.	CHECKED -	REVISED -
	PLOT DATE = Apr-26-2011 11:02:08AM	DATE -	REVISED -

**STATE OF ILLINOIS
DEPARTMENT OF TRANSPORTATION**

PLAN SHEET

SCALE: SHEET NO. OF SHEETS STA. TO STA.

F.A.S RTE.	SECTION	COUNTY	TOTAL SHEETS	SHEET NO.
1741	1120	MONTGOMERY	24	23a
CONTRACT NO. 72D93			ILLINOIS FED. AID PROJECT	



POT Sta 1771+12.90

1770+00

1775+00

1780+00

MATCH LINE STA 1798+14.07

1800+00

1805+00

FR I-55 WEST

1810+00

MATCH LINE STA 1813+14.07



1785+00

1790+00

1795+00

MATCH LINE STA 1813+14.07

1815+00

1820+00

FR I-55 WEST

1825+00

MATCH LINE STA 1828+14.07

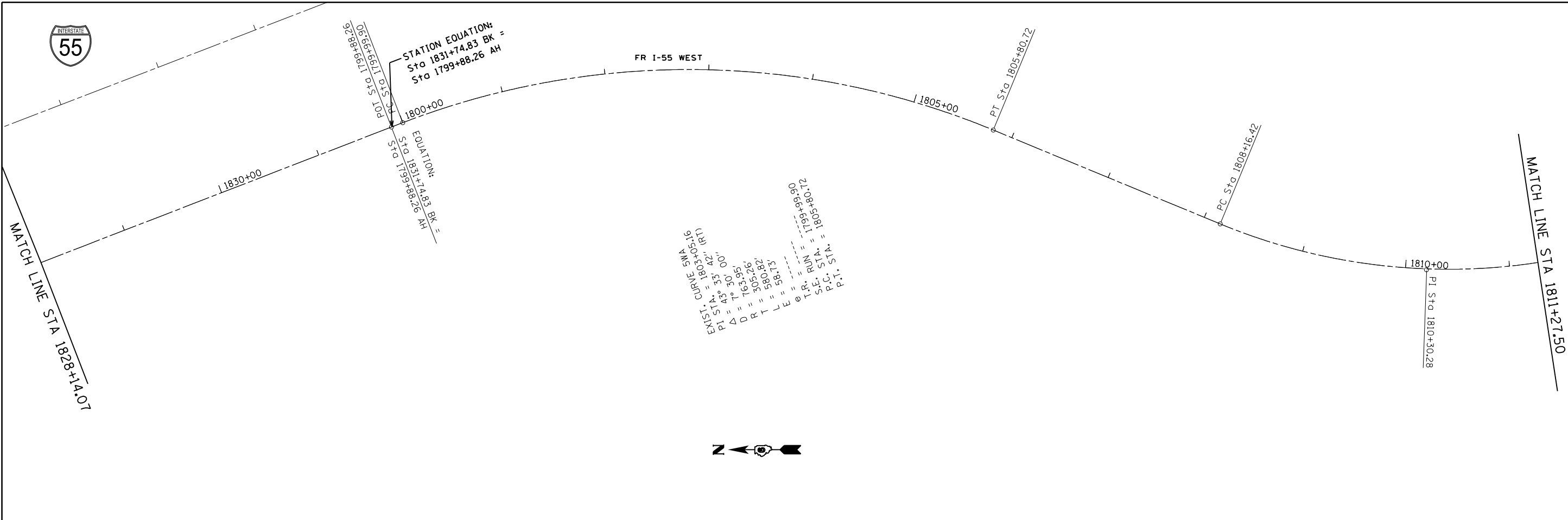
FILE NAME =	USER NAME = Sparksgw	DESIGNED -	REVISED -
ei:\pw\work\p\dot\sparksgw\0229974\0672093-sht-plan41.dgn		DRAWN -	REVISED -
	PLOT SCALE = 100.0000' / 1in.	CHECKED -	REVISED -
	PLOT DATE = Apr-26-2011 11:02:09AM	DATE -	REVISED -

STATE OF ILLINOIS
DEPARTMENT OF TRANSPORTATION

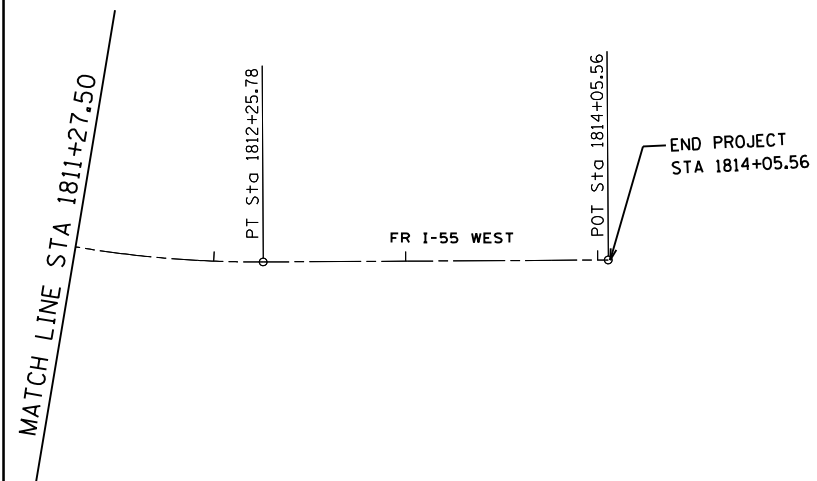
PLAN SHEET

SCALE: SHEET NO. OF SHEETS STA. TO STA.

F.A.S RTE.	SECTION	COUNTY	TOTAL SHEETS	SHEET NO.
1741	1120	MONTGOMERY	24	23b
CONTRACT NO. 72D93			ILLINOIS FED. AID PROJECT	



EXIST. I.T. = 1803.42"
 PI STA = 33.42"
 Δ = 43° 30' 00"
 D = 163.95'
 R = 305.26'
 L = 580.82'
 E = 58.13'
 θ = 21° 08' 50.81"
 T.R. RUN = 1789.1789
 S.E. STA = 1808+16.42
 P.C. STA = 1808+16.42
 P.T. STA = 1810+30.28



FILE NAME =	USER NAME = Sparksgw	DESIGNED -	REVISED -
ei:\pwork\pwork\sparksgw\10229974\10672093-sht-plan41.dgn		DRAWN -	REVISED -
	PLOT SCALE = 100.0000' / in.	CHECKED -	REVISED -
	PLOT DATE = Apr-26-2011 11:02:09AM	DATE -	REVISED -

STATE OF ILLINOIS
DEPARTMENT OF TRANSPORTATION

PLAN SHEET

SCALE: SHEET NO. OF SHEETS STA. TO STA.

F.A.S. RTE.	SECTION	COUNTY	TOTAL SHEETS	SHEET NO.
1741	1120	MONTGOMERY	24	24
CONTRACT NO. 72D93				
ILLINOIS FED. AID PROJECT				

MATCH LINE STA 1814+05.56