

STATE OF ILLINOIS
DEPARTMENT OF TRANSPORTATION
DIVISION OF HIGHWAYS

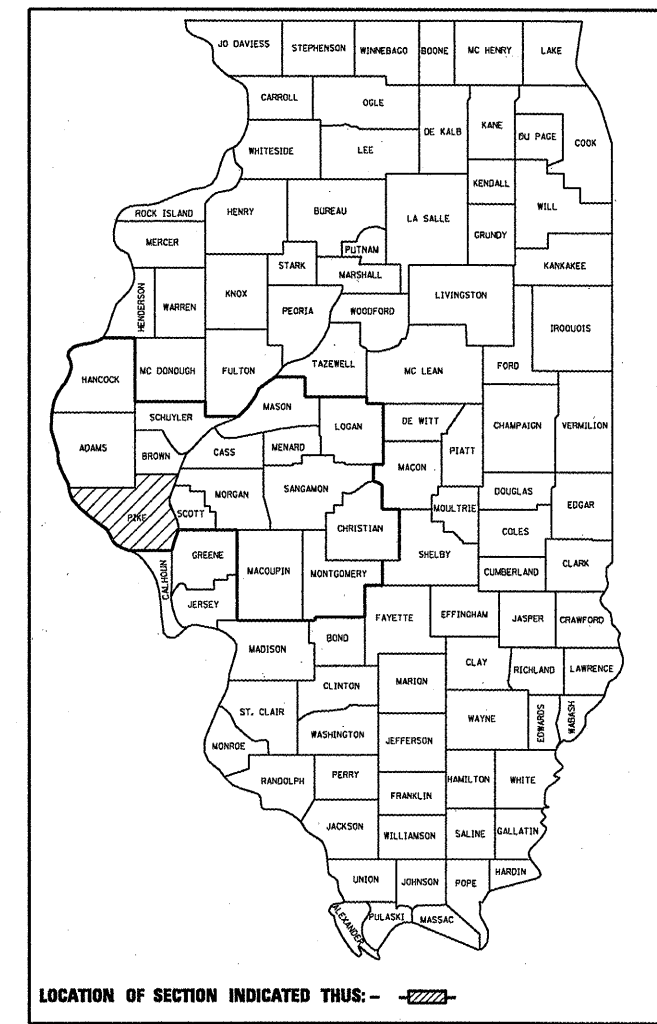
PROPOSED
HIGHWAY PLANS

ROUTE: VARIOUS
SECTION: D6 GUARDRAIL END REPL 2011-2
PROJECT HSIP-0005(849)
COUNTY: PIKE CO.

INDEX OF SHEETS

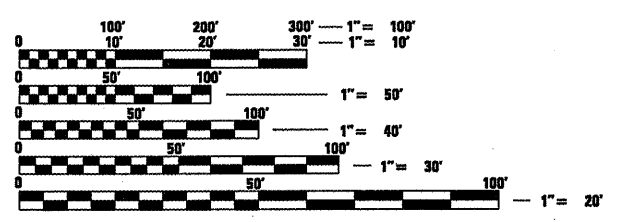
- 1 COVER SHEET
- 2 GENERAL NOTES
- 3 SUMMARY OF QUANTITIES
- 4,5 SCHEDULES OF QUANTITIES
- 6,7 GUARDRAIL LOCATION SHEETS
- 8 - 13 GUARDRAIL DETAIL SHEETS
- 14 - 17 EXISTING GUARDRAIL MODIFICATION DETAIL SHEETS

D-96-037-11



HIGHWAY STANDARDS

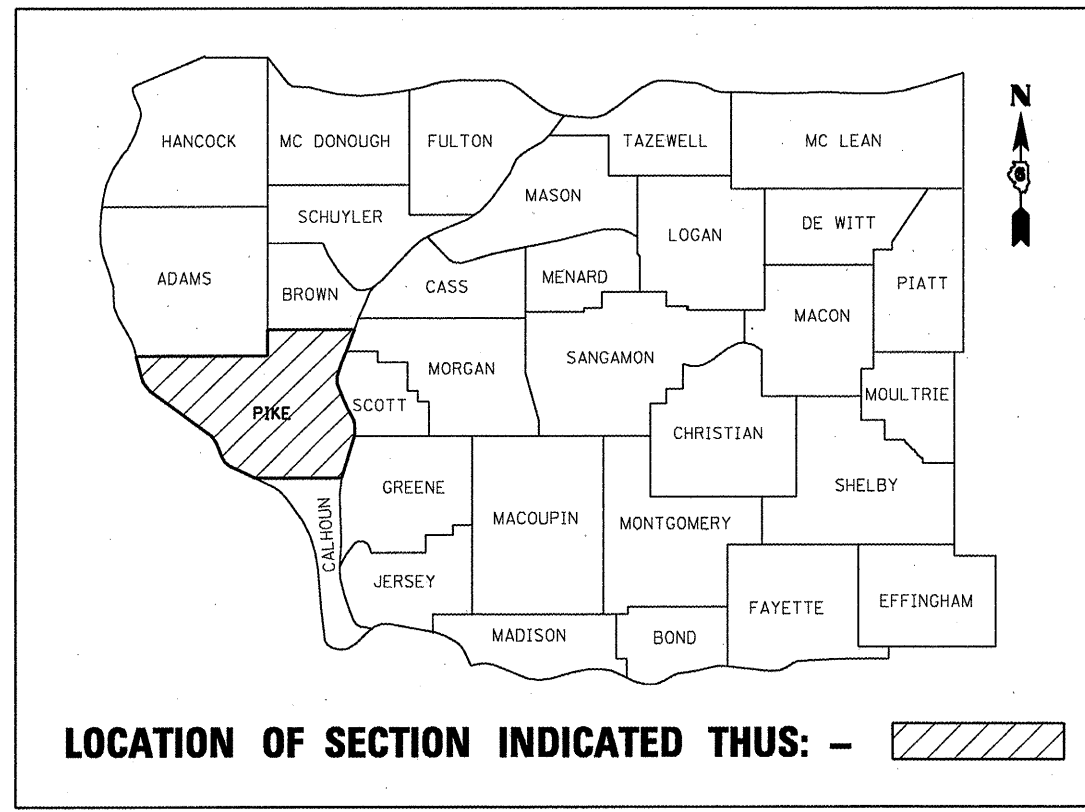
- 000001-06 631031-09 701006-03
- 630001-09 635006-03 701201-04
- 630301-05 635011-02 701901-01



FULL SIZE PLANS HAVE BEEN PREPARED USING STANDARD ENGINEERING SCALES. REDUCED SIZED PLANS WILL NOT CONFORM TO STANDARD SCALES. IN MAKING MEASUREMENTS ON REDUCED PLANS, THE ABOVE SCALES MAY BE USED.

J.U.L.I.E.
 JOINT UTILITY LOCATION INFORMATION FOR EXCAVATION
 1-800-892-0123
 OR 811

C-96-037-11



LOCATION MAP

PROJECT ENGINEER: JEFF MYERS (217) 782-4761
 PROJECT MANAGER: BRIAN LANINGHAM (217) 524-0472

CONTRACT NO. 72E16

STATE OF ILLINOIS
 DEPARTMENT OF TRANSPORTATION
 DIVISION OF HIGHWAYS

SUBMITTED *March 25* 2011
Roger Z. Orstad
 DEPUTY DIRECTOR OF HIGHWAYS, REGION ENGINEER

May 13 2011
Scott E. Stitt, P.E./B.C.
 acting ENGINEER OF DESIGN AND ENVIRONMENT

May 13 2011
Christine M. Roeder
 DIRECTOR OF HIGHWAYS, CHIEF ENGINEER

**PRINTED BY THE AUTHORITY
 OF THE STATE OF ILLINOIS**

GENERAL NOTES

1. ALL OF THE DISTURBED AREAS WITHIN THE RIGHT OF WAY NOT COVERED BY SURFACING MATERIAL SHALL BE SEEDED.
2. CONTRACTOR SHALL PROVIDE ADEQUATE DRAINAGE AND EROSION PROTECTION FOR THE DURATION OF THIS PROJECT.
3. SEEDING WILL NOT BE PERMITTED AT ANY TIME WHEN THE GROUND IS FROZEN, WET OR IN AN UNTILLABLE CONDITION. LOCATIONS TO BE SEEDED SHALL BE DETERMINED BY THE ENGINEER.
4. THE CONTRACTOR SHALL BE RESPONSIBLE FOR PROTECTING UTILITY PROPERTY FROM CONSTRUCTION OPERATIONS AS OUTLINED IN ARTICLE 107.31 OF THE STANDARD SPECIFICATIONS. THE JULIE NUMBER IS 800-892-0123. A MINIMUM OF FORTY-EIGHT HOURS ADVANCE NOTICE IS REQUIRED. ANY DAMAGE TO THE UNDERGROUND FACILITIES, CAUSED BY THE CONTRACTOR SHALL BE REPAIRED TO THE SATISFACTION OF THE DEPARTMENT AT THE CONTRACTOR'S EXPENSE, INCLUDING TEMPORARY REPAIRS WHICH MAY BE REQUIRED TO KEEP THE FACILITY OPERATIONAL WHILE MATERIAL IS BEING OBTAINED TO MAKE PERMANENT REPAIRS.
5. ANY REFERENCE TO A STANDARD IN THESE PLANS SHALL BE INTERPRETED TO MEAN THE EDITION AS INDICATED BY THE SUBNUMBER LISTED ON THE INDEX OF SHEETS OR THE COPY OF THE STANDARD INCLUDED IN THESE PLANS.
6. IN ADDITION TO FIELD SURVEYS AND AERIAL SURVEYS, PLAN DIMENSIONS AND DETAILS RELATIVE TO THE EXISTING FACILITIES HAVE BEEN TAKEN FROM EXISTING PLANS AND ARE SUBJECT TO CONSTRUCTION VARIATIONS. IT SHALL BE THE CONTRACTOR'S RESPONSIBILITY TO VERIFY SUCH DIMENSIONS AND DETAILS IN THE FIELD. SUCH VARIATIONS SHALL NOT BE A CAUSE FOR ADDITIONAL COMPENSATION DUE TO A CHANGE IN THE SCOPE OF THE WORK. HOWEVER, THE CONTRACTOR WILL BE PAID FOR THE QUANTITY ACTUALLY FURNISHED AT THE UNIT PRICE BID FOR THE WORK.
7. FINAL VERTICAL ADJUSTMENT OF GUARDRAIL IF REQUIRED SHALL NOT BE PAID FOR SEPARATELY BUT INCLUDED IN THE UNIT COSTS OF THE PROJECT.
8. GUARDRAIL REMOVAL SHALL INCLUDE TRAFFIC BARRIER BRIDGE TERMINALS AND TRAFFIC BARRIER END TERMINALS.
9. THE CONTRACTOR WILL BE REQUIRED TO CONTACT THE OPERATIONS ENGINEER (217) 782-7314 AT LEAST 72 HOURS PRIOR TO DRIVING ANY POSTS. TO MAKE SURE STATE OWNED UTILITIES ARE NOT IN THE WAY.
10. THE CONTRACTOR WILL BE REQUIRED TO REPAIR ANY AREAS OF TURF THAT ARE DAMAGED DURING THE EXECUTION OF THIS CONTRACT. THIS WORK WILL NOT BE MEASURED FOR PAYMENT AND WILL BE CONSIDERED IN THE UNIT COSTS OF THE PROJECT.
11. ALL GUARDRAIL SHALL HAVE A PRELIMINARY LAYOUT. GUARDRAIL POSTS SHALL BE ADJUSTED AS TO MISS ANY SHOULDER DRAINS, INLETS, PIPE CULVERTS, STORM SEWER OR ANY OTHER THAT MAY INTERFERE WITH GUARDRAIL CONSTRUCTION.
12. IN AREAS WHERE A "SOIL PAD" IS TO BE CONSTRUCTED, THE CONTRACTOR SHALL PROVIDE SOIL, CLASS 2 SEEDING, FERTILIZER, MULCH METHOD 1 AND ALL NECESSARY MATERIAL AND LABOR TO COMPLETE THE "SOIL PADS" AS SHOWN IN THE PLANS. THIS WORK WILL PAID FOR AT THE CONTRACT UNIT PRICE PER CUBIC YARD FOR "FURNISHED EXCAVATION".
13. AT LOCATION "D" ON US 54, THE CONTRACTOR SHALL RELOCATE THE EXISTING MAILBOX PRIOR TO THE GUARDRIAL REMOVAL AS SHOWN IN THE PLANS. THIS WORK SHALL BE IN ACCORDANCE WITH SECTION 107.20 OF "Standard Specification for Road and Bridge Construction" January 1, 2007 Edition. THIS WORK WILL NOT BE MEASURED FOR PAYMENT AND WILL BE CONSIDERED IN THE UNIT COSTS OF GUARDRAIL REMOVAL" OF THE PROJECT

DISTRICT SIX	
EXAMINED <u>MARCH 21</u>	20 <u>11</u>
<i>Chris Welch</i>	
OPERATIONS ENGINEER	
EXAMINED <u>MARCH 16</u>	20 <u>11</u>
<i>Tommy Felt</i>	
PROJECT IMPLEMENTATION ENGINEER	
EXAMINED <u>March 23</u>	20 <u>11</u>
<i>John C. Nguyen</i>	
PROGRAM DEVELOPMENT ENGINEER	

SUMMARY OF QUANTITIES				
LOCATION OF WORK				Pike Co. 90% FED / 10% STATE ROADWAY
SUMMARY OF QUANTITIES				CONSTRUCTION TYPE CODE
CODE NO.	ITEM	UNITS	TOTAL QUANTITY	0021
20400800	FURNISHED EXCAVATION	CU YD	10.0	10.0
63000003	STEEL PLATE BEAM GUARDRAIL, TYPE A, 9 FOOT POSTS	FOOT	512.5	512.5
63000025	STEEL PLATE BEAM GUARDRAIL, ATTACHED TO STRUCTURES	FOOT	50.0	50.0
63100085	TRAFFIC BARRIER TERMINAL, TYPE 6	EACH	2.0	2.0
63100167	TRAFFIC BARRIER TERMINAL, TYPE 1 (SPECIAL) TANGENT	EACH	62.0	62.0
63200310	GUARDRAIL REMOVAL	FOOT	2,850.0	2,850.0
63300725	STEEL PLATE BEAM GUARDRAIL (SHORT RADIUS)	FOOT	12.5	12.5
67100100	MOBILIZATION	L SUM	1.0	1.0
70100450	TRAFFIC CONTROL AND PROTECTION, STANDARD 701201	L SUM	1.0	1.0
78200410	GUARDRAIL MARKERS, TYPE A	EACH	17.0	17.0
78201000	TERMINAL MARKER - DIRECT APPLIED	EACH	63.0	63.0

PIKE CO.

20400800	FURNISHED EXCAVATION	CU YD
63000003	STEEL PLATE BEAM GUARDRAIL, TYPE A, 9 FOOT POSTS	FOOT
63000025	STEEL PLATE BEAM GUARDRAIL, ATTACHED TO STRUCTURES	FOOT
63100085	TRAFFIC BARRIER TERMINAL, TYPE 6	EACH
63100167	TRAFFIC BARRIER TERMINAL, TY 1, SPECIAL (TANGENT)	EACH
63200310	GUARDRAIL REMOVAL	FOOT
63300725	STEEL PLATE BEAM GUARDRAIL (SHORT RADIUS)	FOOT
78200410	GUARDRAIL MARKERS, TYPE A	EACH
78201000	TERMINAL MARKER, DIRECT APPLIED	EACH

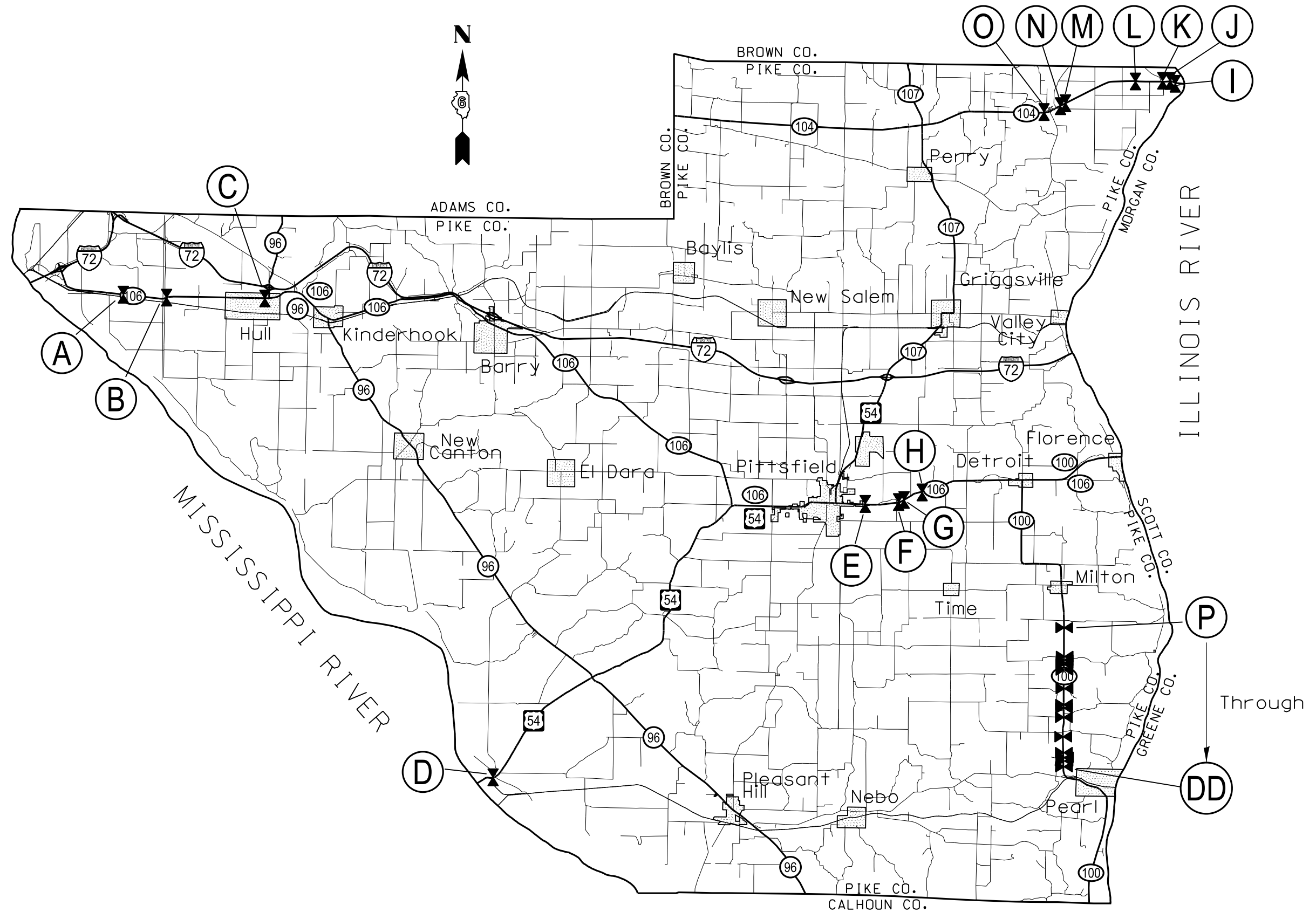
LOCATION	ROUTE	STRUCTURE TYPE	DIRECTION	GUARDRAIL OFFSET (FOOT)	GUARDRAIL HEIGHT (INCHES)	SPBGR TY A, 9FT. POST (FOOT)	TERMINAL TYPE 6 (EACH)	TERMINAL TY. 1 (SPL) (EACH)	GUARDRAIL REMOVAL (FOOT)	SPBGR, ATTACHED TO STRUCTURE	SPBG TYPE A, SHORT RAD (FOOT)	GUARDRAIL MARKERS, TY A (EACH)	TERMINAL MARKER (EACH)	SOIL PADS (EACH)	FURN. EX. (CU YD)	REMARKS
A	IL 106	ROADWAY	NW QUAD	MATCH EXSTING	MATCH EXSTING	-	-	1	50.0	-	-	-	1	1	5	
			NE QUAD	MATCH EXSTING	MATCH EXSTING	-	-	1	50.0	-	-	-	1	1	5	
			SW QUAD	MATCH EXSTING	MATCH EXSTING	-	-	1	50.0	-	-	-	1	-	-	
			SE QUAD	MATCH EXSTING	MATCH EXSTING	-	-	1	50.0	-	-	-	1	-	-	
B	IL 106	ROADWAY	NW QUAD	MATCH EXSTING	MATCH EXSTING	200.0	-	1	50.0	-	-	5	1	-	-	
			NE QUAD	MATCH EXSTING	MATCH EXSTING	200.0	-	1	175.0	-	-	5	1	-	-	
C	IL 106	ROADWAY	NW QUAD	MATCH EXSTING	MATCH EXSTING	25.0	-	1	12.5	-	-	1	1	-	-	IL 106 / IL 96 INTERSECTION
			NE QUAD	MATCH EXSTING	MATCH EXSTING	12.5	-	1	12.5	-	-	1	1	-	-	
			SE QUAD	MATCH EXSTING	MATCH EXSTING	25.0	-	1	25.0	-	-	1	1	-	-	
D	US 54	ROADWAY	SE QUAD	MATCH EXSTING	MATCH EXSTING	-	-	1	87.5	-	-	-	1	-	-	RELOCATE MAILBOX
E	IL 106	ROADWAY	NW QUAD	MATCH EXSTING	MATCH EXSTING	6.25	-	1	37.5	-	-	-	1	-	-	
			NE QUAD	MATCH EXSTING	MATCH EXSTING	6.25	-	1	37.5	-	-	-	1	-	-	
F	IL 106	ROADWAY	NW QUAD	MATCH EXSTING	MATCH EXSTING	-	-	1	37.5	6.25	-	1	1	-	-	
			NE QUAD	MATCH EXSTING	MATCH EXSTING	75.0	-	1	37.5	6.25	-	-	1	-	-	
			SW QUAD	MATCH EXSTING	MATCH EXSTING	75.0	-	1	37.5	6.25	-	-	1	-	-	
			SE QUAD	MATCH EXSTING	MATCH EXSTING	-	-	1	37.5	6.25	-	-	1	-	-	
G	IL 106	ROADWAY	NW QUAD	MATCH EXSTING	MATCH EXSTING	12.5	-	1	37.5	12.5	-	1	1	-	-	HOLD NE QUAD IN EXISTING POSITION
			NE QUAD	MATCH EXSTING	MATCH EXSTING	25.0	-	1	37.5	12.5	12.5	-	1	-	-	
			SW QUAD	MATCH EXSTING	MATCH EXSTING	75.0	-	1	37.5	12.5	-	1	1	-	-	
			SE QUAD	MATCH EXSTING	MATCH EXSTING	12.5	-	1	37.5	12.5	-	-	1	-	-	
H	IL 106	ROADWAY	NE QUAD	MATCH EXSTING	MATCH EXSTING	-	-	1	50.0	-	-	-	1	-	-	
			SW QUAD	MATCH EXSTING	MATCH EXSTING	-	-	1	50.0	-	-	-	1	-	-	
			SE QUAD	MATCH EXSTING	MATCH EXSTING	-	-	1	50.0	-	-	-	1	-	-	
I	IL 104	ROADWAY	NW QUAD	MATCH EXSTING	MATCH EXSTING	-	-	1	50.0	-	-	-	1	-	-	
			SW QUAD	MATCH EXSTING	MATCH EXSTING	-	-	1	50.0	-	-	-	1	-	-	
J	IL 104	ROADWAY	SE QUAD	MATCH EXSTING	MATCH EXSTING	-	-	1	50.0	-	-	-	1	-	-	
		ROADWAY	NE QUAD	MATCH EXSTING	MATCH EXSTING	-	-	1	50.0	-	-	-	1	-	-	
K	IL 104	ROADWAY	NW QUAD	MATCH EXSTING	MATCH EXSTING	-	-	1	50.0	-	-	-	1	-	-	
			SW QUAD	MATCH EXSTING	MATCH EXSTING	-	-	1	50.0	-	-	-	1	-	-	
L	IL 104	SN 075-0033	NW QUAD	MATCH EXSTING	MATCH EXSTING	-	-	1	50.0	-	-	-	1	-	-	
			NE QUAD	MATCH EXSTING	MATCH EXSTING	-	-	1	50.0	-	-	-	1	-	-	
			SW QUAD	MATCH EXSTING	MATCH EXSTING	-	-	1	50.0	-	-	-	1	-	-	
			SE QUAD	MATCH EXSTING	MATCH EXSTING	-	-	1	50.0	-	-	-	1	-	-	

PIKE CO.

20400800	FURNISHED EXCAVATION	CU YD
63000003	STEEL PLATE BEAM GUARDRAIL, TYPE A, 9 FOOT POSTS	FOOT
63000025	STEEL PLATE BEAM GUARDRAIL, ATTACHED TO STRUCTURES	FOOT
63100085	TRAFFIC BARRIER TERMINAL, TYPE 6	EACH
63100167	TRAFFIC BARRIER TERMINAL, TY 1, SPECIAL (TANGENT)	EACH
63200310	GUARDRAIL REMOVAL	FOOT
63300725	STEEL PLATE BEAM GUARDRAIL (SHORT RADIUS)	FOOT
78200410	GUARDRAIL MARKERS, TYPE A	EACH
78201000	TERMINAL MARKER, DIRECT APPLIED	EACH

LOCATION	ROUTE	STRUCTURE TYPE	DIRECTION	GUARDRAIL OFFSET (FOOT)	GUARDRAIL HEIGHT (INCHES)	SPBGR TY A, 9FT. POST (FOOT)	TERMINAL TYPE 6 (EACH)	TERMINAL TY. 1 (SPL) (EACH)	GUARDRAIL REMOVAL (FOOT)	SPBGR, ATTACHED TO STRUCTURE	SPBG TYPE A, SHORT RAD (FOOT)	GUARDRAIL MARKERS, TY A (EACH)	TERMINAL MARKER (EACH)	SOIL PADS (EACH)	FURN. EX. (CU YD)	REMARKS	
M	IL 104	ROADWAY	NE QUAD	MATCH EXSTING	MATCH EXSTING	-	-	1	50.0	-	-	-	1	-	-	EAST SIDE OF FIELD ENTRANCE WEST SIDE OF FIELD ENTRANCE	
			SE QUAD	MATCH EXSTING	MATCH EXSTING	-	-	1	50.0	-	-	-	1	-	-		
			NW QUAD	MATCH EXSTING	MATCH EXSTING	-	-	1	50.0	-	-	-	1	-	-		
			NE QUAD	MATCH EXSTING	MATCH EXSTING	-	-	1	50.0	-	-	-	1	-	-		
			NW QUAD	MATCH EXSTING	MATCH EXSTING	-	-	1	50.0	-	-	-	1	-	-		
N	IL 104	SN 075-0081	NE QUAD	MATCH EXSTING	MATCH EXSTING	-	-	1	50.0	-	-	-	1	-	-		
			SE QUAD	MATCH EXSTING	MATCH EXSTING	-	-	1	50.0	-	-	-	1	-	-		
			NW QUAD	MATCH EXSTING	MATCH EXSTING	-	1	1	-	-	-	-	1	-	-		
			SW QUAD	MATCH EXSTING	MATCH EXSTING	-	1	1	-	-	-	-	1	-	-		
O	IL 104	ROADWAY	SE QUAD	-	-	-	-	-	-	-	-	1	-	-	NEW TERMINAL MARKER		
P	IL 100	ROADWAY	SW QUAD	MATCH STANDARD	MATCH EXSTING	-	-	1	37.5	-	-	-	1	-	-		
Q	IL 100	ROADWAY	NE QUAD	MATCH STANDARD	MATCH EXSTING	-	-	1	37.5	-	-	-	1	-	-		
R	IL 100	ROADWAY	SE QUAD	MATCH STANDARD	MATCH EXSTING	-	-	1	37.5	-	-	-	1	-	-		
S	IL 100	ROADWAY	NE QUAD	MATCH STANDARD	MATCH EXSTING	-	-	1	37.5	-	-	-	1	-	-		
			SW QUAD	MATCH STANDARD	MATCH EXSTING	-	-	1	37.5	-	-	-	1	-	-		
			NW QUAD	MATCH STANDARD	MATCH EXSTING	-	-	1	50.0	-	-	-	1	-	-		
T	IL 100	ROADWAY	SW QUAD	MATCH STANDARD	MATCH EXSTING	-	-	1	37.5	-	-	-	1	-	-		
U	IL 100	ROADWAY	SE QUAD	MATCH STANDARD	MATCH EXSTING	-	-	1	50.0	-	-	-	1	-	-		
V	IL 100	ROADWAY	SW QUAD	MATCH STANDARD	MATCH EXSTING	-	-	1	50.0	-	-	-	1	-	-		
W	IL 100	ROADWAY	SW QUAD	MATCH STANDARD	MATCH EXSTING	-	-	1	37.5	-	-	-	1	-	-		
X	IL 100	ROADWAY	SW QUAD	MATCH STANDARD	MATCH EXSTING	-	-	1	50.0	-	-	-	1	-	-		
Y	IL 100	ROADWAY	NW QUAD	MATCH STANDARD	MATCH EXSTING	-	-	1	50.0	-	-	-	1	-	-		
Z	IL 100	ROADWAY	SE QUAD	MATCH STANDARD	MATCH EXSTING	-	-	1	50.0	-	-	-	1	-	-		
AA	IL 100	ROADWAY	NE QUAD	MATCH STANDARD	MATCH EXSTING	-	-	1	50.0	-	-	-	1	-	-		
			NW QUAD	MATCH STANDARD	MATCH EXSTING	-	-	1	50.0	-	-	-	1	-	-		
BB	IL 100	ROADWAY	NW QUAD	MATCH STANDARD	MATCH EXSTING	-	-	1	50.0	-	-	-	1	-	-		
CC	IL 100	ROADWAY	NW QUAD	MATCH STANDARD	MATCH EXSTING	-	-	1	50.0	-	-	-	1	-	-		
			SW QUAD	MATCH STANDARD	MATCH EXSTING	-	-	1	50.0	-	-	-	1	-	-		
DD	IL 100	ROADWAY	SE QUAD	MATCH STANDARD	MATCH EXSTING	-	-	1	50.0	-	-	-	1	-	-		
						TOTALS											
							750.0	2	62	2850.0	75.0	12.5	17	63	2	10	

FILE NAME =	USER NAME = Sparksgw	DESIGNED -	REVISED -	STATE OF ILLINOIS DEPARTMENT OF TRANSPORTATION	D6 GUARDRAIL END REPL SCHEDULE OF QUANTITIES	F.A.P. RTE.	SECTION	COUNTY	TOTAL SHEETS	SHEET NO.	
et:\pw\work\pwidot\sparksgw\0247448\0672E16-sht-schedule.dgn		DRAWN -	REVISED -			VAR.	**	*	17	5	
PLOT SCALE = 40.0000' / in.		CHECKED -	REVISED -			SCALE: SHEET NO. OF SHEETS STA. TO STA.					
PLOT DATE = Mar-23-2011 03:44:18PM		DATE -	REVISED -			ILLINOIS FED. AID PROJECT CONTRACT NO. 72E16					



FILE NAME =	USER NAME = Sparksgw	DESIGNED -	REVISED -
ei:\pw\work\p\dot\sparksgw\0247448\0672E16-sht-location.dgn		DRAWN -	REVISED -
	PLOT SCALE = 20000.0000' / in.	CHECKED -	REVISED -
	PLOT DATE = Mar-23-2011 03:44:34PM	DATE -	REVISED -

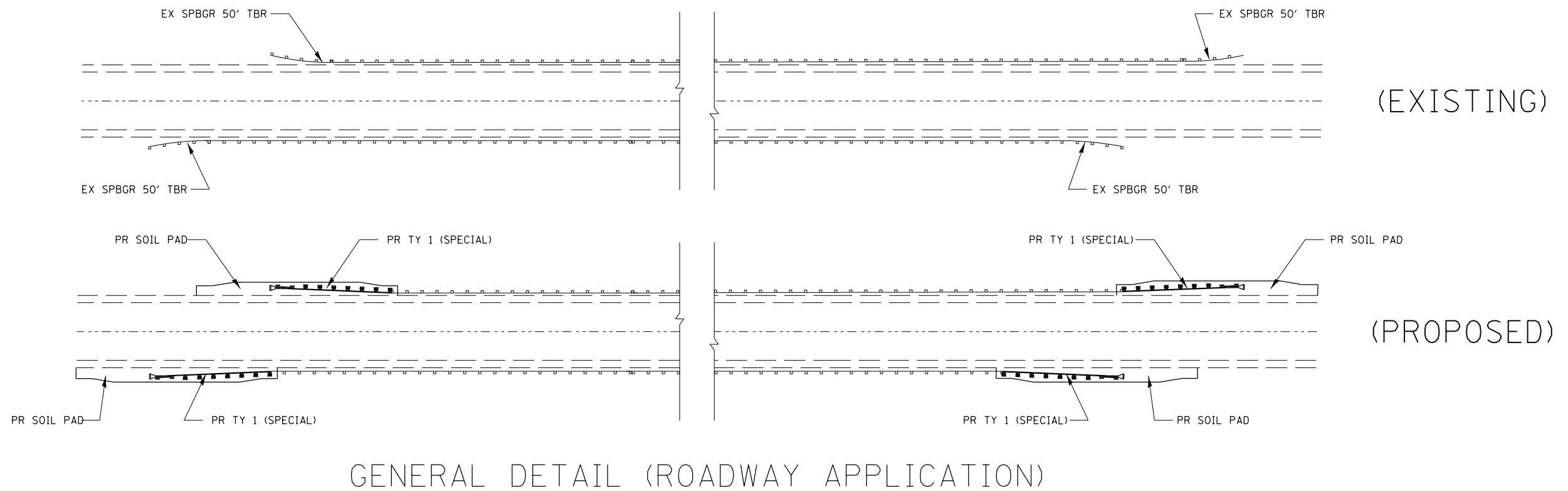
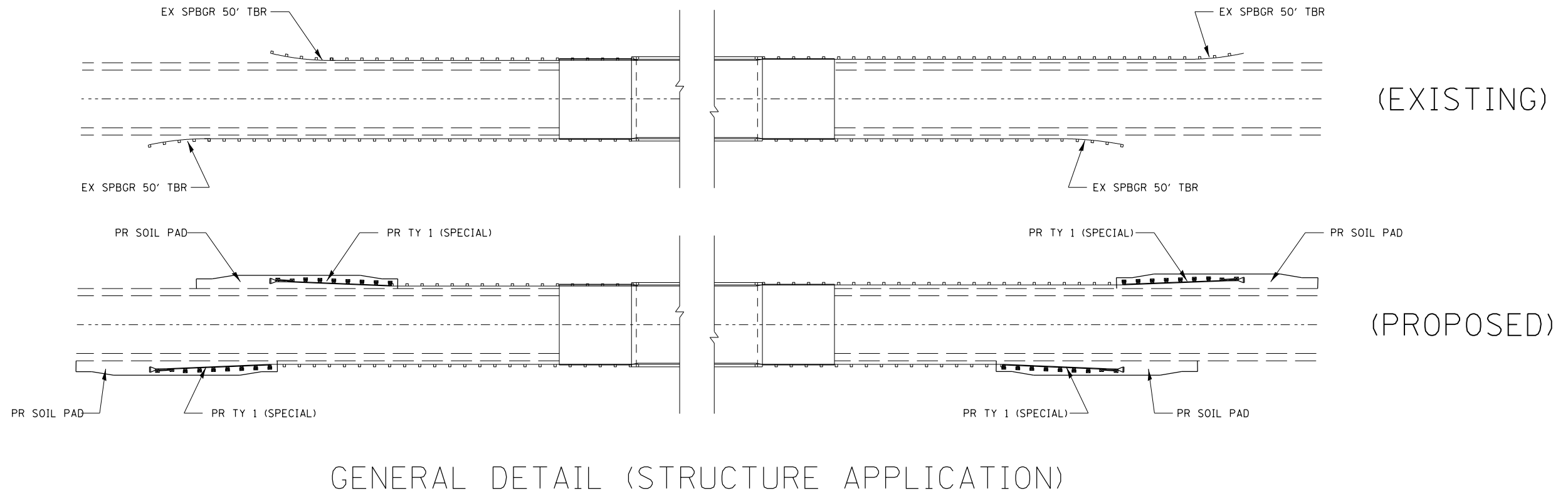
**STATE OF ILLINOIS
DEPARTMENT OF TRANSPORTATION**

D6 GUARDRAIL END REPL GUARDRAIL LOCATION SHEETS				
SCALE:	SHEET NO.	OF SHEETS	STA.	TO STA.

F.A.P. RTE.	SECTION	COUNTY	TOTAL SHEETS	SHEET NO.
	..		17	6
CONTRACT NO. 72E16				
ILLINOIS FED. AID PROJECT				

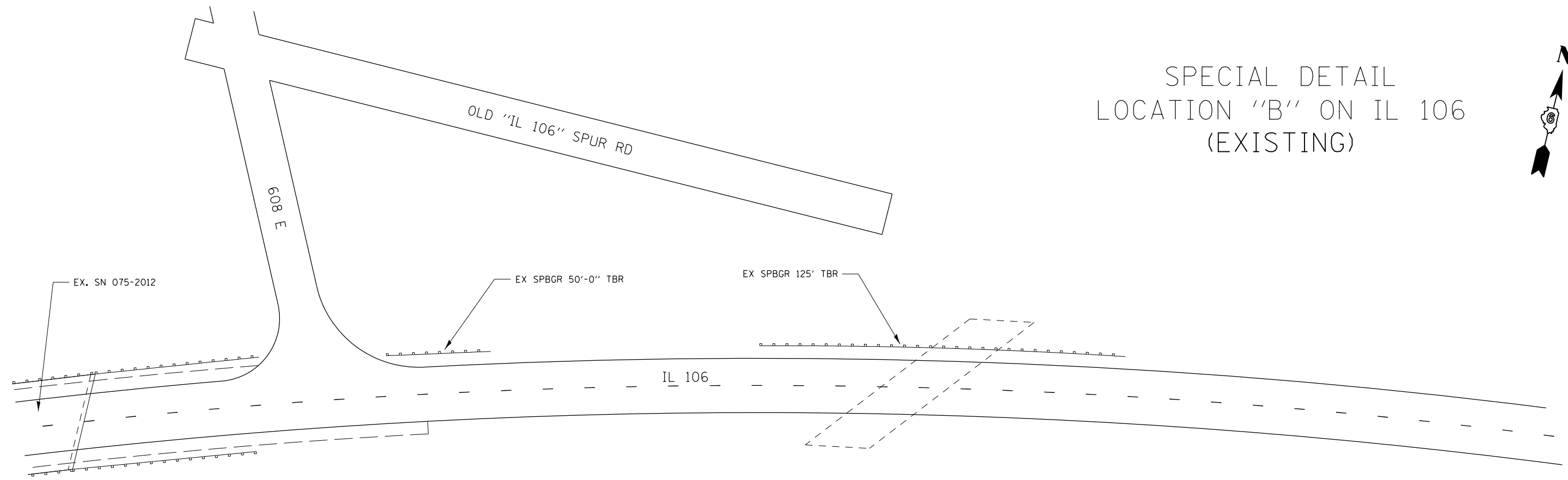
PIKE COUNTY		
LOCATION	DESCRIPTION LOCATION	ROUTE
A	Proceeding 2.80 miles to the East from the IL 106 / I-72 Interchange	IL 106
B	Proceeding 4.40 miles to the East from the IL 106 / I-72 Interchange	
C	Proceeding 8.00 miles to the East from the IL 106 / I-72 Interchange at the Intersection of IL 96 / IL 106	
D	Proceeding 14.00 miles to the Southeast from the Intersection of IL 106 / US 54	US 54
E	Proceeding 33.50 miles to the East from the IL 106 / I-72 Interchange	IL 106
F	Proceeding 35.10 miles to the East from the IL 106 / I-72 Interchange	
G	Proceeding 35.30 miles to the East from the IL 106 / I-72 Interchange	
H	Proceeding 36.00 miles to the East from the IL 106 / I-72 Interchange	
I	Proceeding 0.30 miles to the West from the Morgan/Pike Co. line (Illinois River)	IL 104
J	Proceeding 0.50 miles to the West from the Morgan/Pike Co. line (Illinois River)	
K	Proceeding 0.80 miles to the West from the Morgan/Pike Co. line (Illinois River)	
L	Proceeding 1.80 miles to the West from the Morgan/Pike Co. line (Illinois River)	
M	Proceeding 4.50 miles to the West from the Morgan/Pike Co. line (Illinois River)	
N	Proceeding 4.80 miles to the West from the Morgan/Pike Co. line (Illinois River)	
O	Proceeding 5.20 miles to the West from the Morgan/Pike Co. line (Illinois River)	

PIKE COUNTY		
LOCATION	DESCRIPTION LOCATION	ROUTE
P	Proceeding 6.70 miles to the South from the Intersection of IL 100 / IL 106	IL 106
Q	Proceeding 7.80 miles to the South from the Intersection of IL 100 / IL 106	
R	Proceeding 7.90 miles to the South from the Intersection of IL 100 / IL 106	
S	Proceeding 8.00 miles to the South from the Intersection of IL 100 / IL 106	
T	Proceeding 8.05 miles to the South from the Intersection of IL 100 / IL 106	
U	Proceeding 8.25 miles to the South from the Intersection of IL 100 / IL 106	
V	Proceeding 8.95 miles to the South from the Intersection of IL 100 / IL 106	
W	Proceeding 9.55 miles to the South from the Intersection of IL 100 / IL 106	
X	Proceeding 9.65 miles to the South from the Intersection of IL 100 / IL 106	
Y	Proceeding 10.00 miles to the South from the Intersection of IL 100 / IL 106	
Z	Proceeding 10.30 miles to the South from the Intersection of IL 100 / IL 106	
AA	Proceeding 11.30 miles to the South from the Intersection of IL 100 / IL 106	
BB	Proceeding 11.50 miles to the South from the Intersection of IL 100 / IL 106	
CC	Proceeding 11.60 miles to the South from the Intersection of IL 100 / IL 106	
DD	Proceeding 11.80 miles to the South from the Intersection of IL 100 / IL 106	

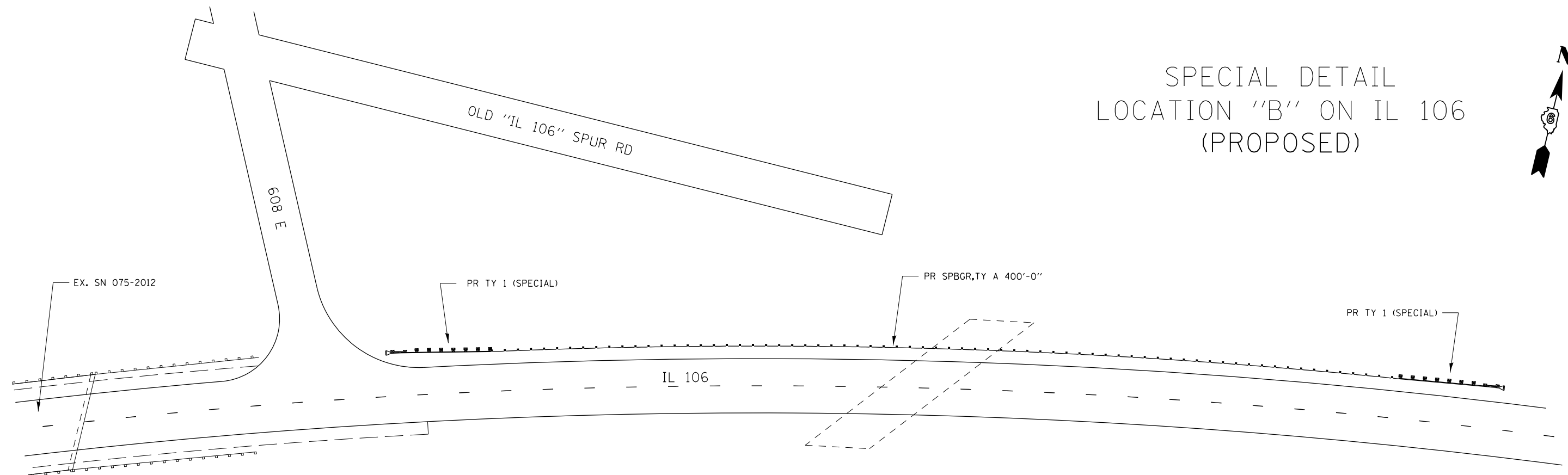


FILE NAME =	USER NAME = sparksgw	DESIGNED -	REVISED -	STATE OF ILLINOIS DEPARTMENT OF TRANSPORTATION	D6 GUARDRAIL END REPL GUARDRAIL DETAIL SHEETS			F.A.P. RTE.	SECTION	COUNTY	TOTAL SHEETS	SHEET NO.
et:\pwork\pwork\sparksgw\0247448\0672E16-sht-Guardrail-detail.dgn	PLOT SCALE = 100.0000' / 1in.	DRAWN -	REVISED -					VAR.	**	*	17	8
PLOT DATE = Mar-23-2011 03:44:54PM	DATE -	CHECKED -	REVISED -		SCALE: SHEET NO. OF SHEETS STA. TO STA.			CONTRACT NO. 72E16				
			REVISED -		ILLINOIS FED. AID PROJECT							

SPECIAL DETAIL
LOCATION "B" ON IL 106
(EXISTING)

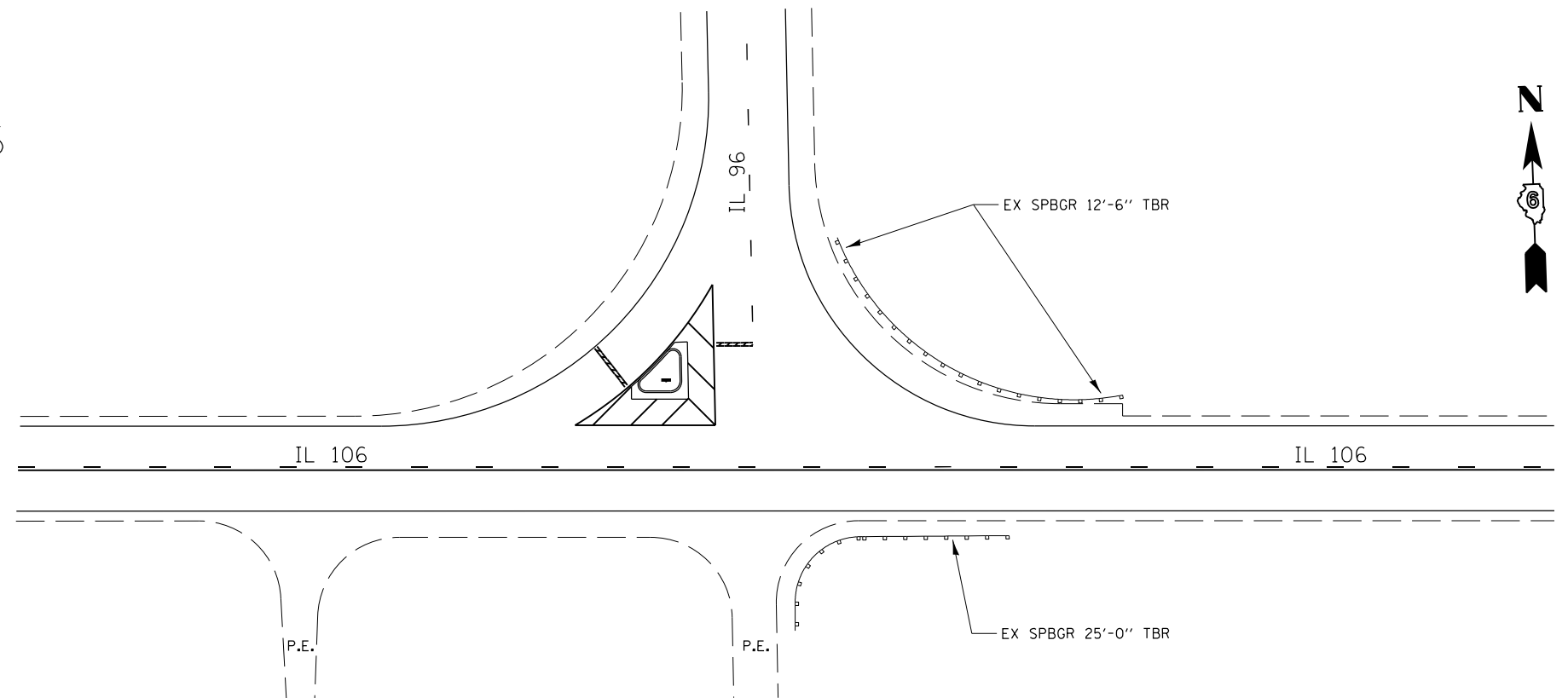


SPECIAL DETAIL
LOCATION "B" ON IL 106
(PROPOSED)

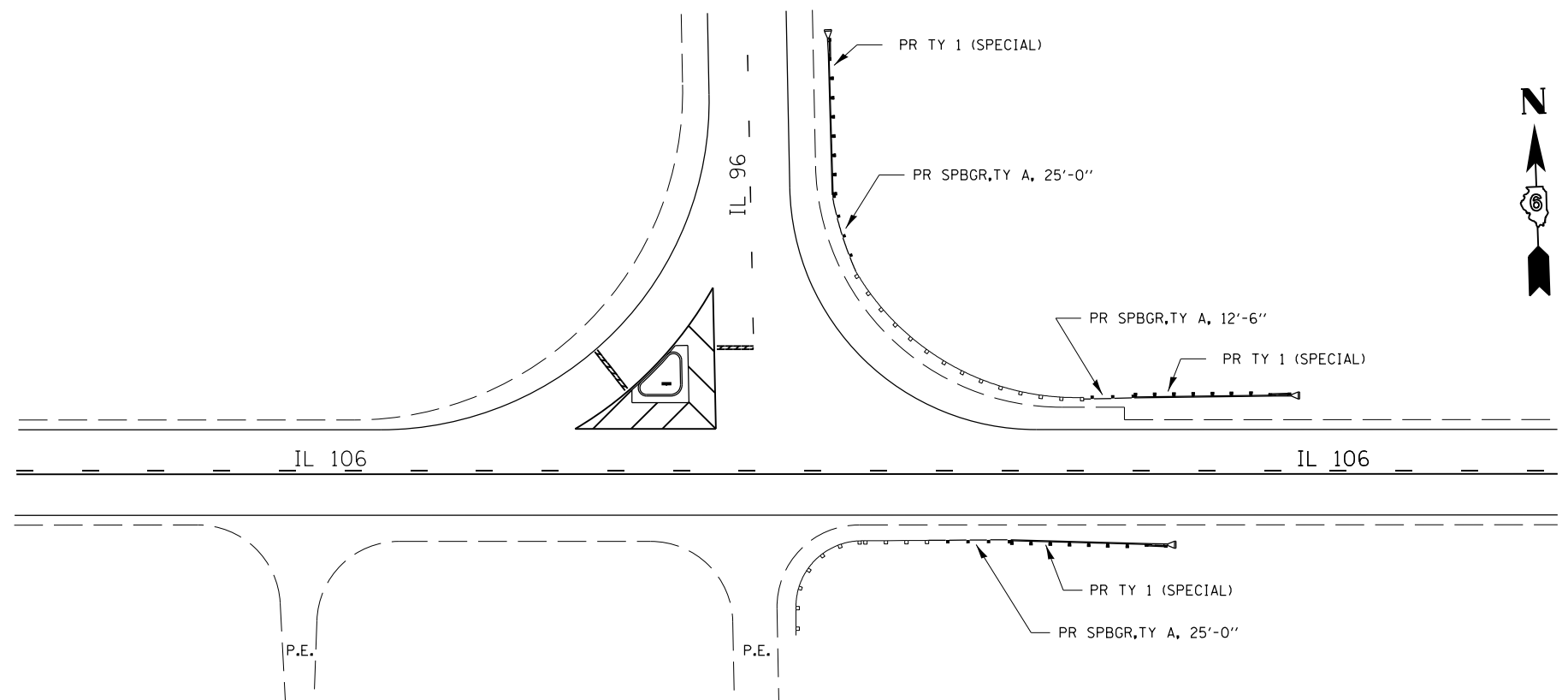


FILE NAME = c:\pwork\pwork\sparksgw\0247448\0672E16-sht-Guardrail-detail.dgn	USER NAME = Sparksgw	DESIGNED -	REVISED -	STATE OF ILLINOIS DEPARTMENT OF TRANSPORTATION	D6 GUARDRAIL END REPL GUARDRAIL DETAIL SHEETS			F.A.P. RTE.	SECTION	COUNTY	TOTAL SHEETS	SHEET NO.	
PLOT SCALE = 100.0000' / in.	CHECKED -	REVISED -	REVISED -		SCALE:	SHEET NO.	OF SHEETS	STA.	TO STA.	CONTRACT NO. 72E16	ILLINOIS FED. AID PROJECT	17	9
PLOT DATE = Mar-23-2011 03:44:55PM	DATE -	REVISED -	REVISED -										
** D6 GUARDRAIL END REPL 2011-2 * PIKE CO.													

SPECIAL DETAIL
LOCATION "C" ON IL 106
(EXISTING)



SPECIAL DETAIL
LOCATION "C" ON IL 106
(PROPOSED)



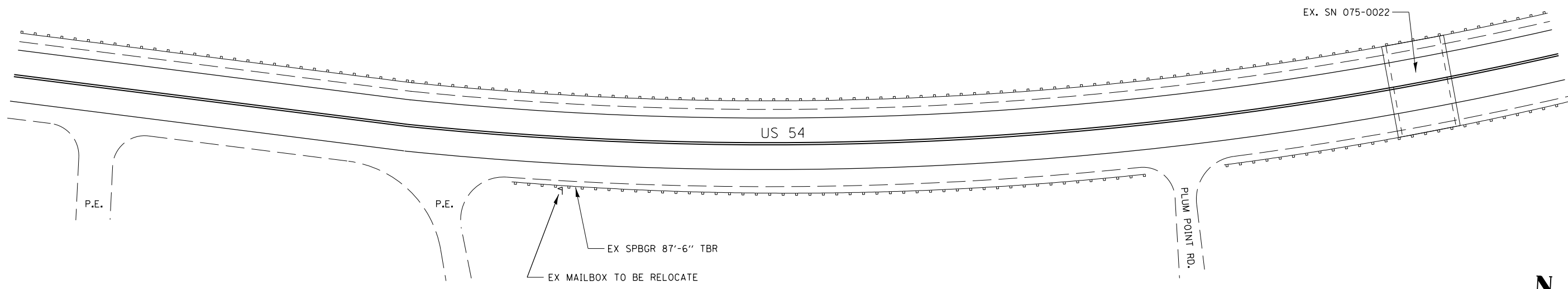
FILE NAME =	USER NAME = Sparksgw	DESIGNED -	REVISED -
c:\pwork\pwork\sparksgw\d0247448\0672E16-sht-Guardrail-detail.dgn		DRAWN -	REVISED -
	PLOT SCALE = 100.0000' / in.	CHECKED -	REVISED -
	PLOT DATE = Mar-23-2011 03:44:55PM	DATE -	REVISED -

STATE OF ILLINOIS
DEPARTMENT OF TRANSPORTATION

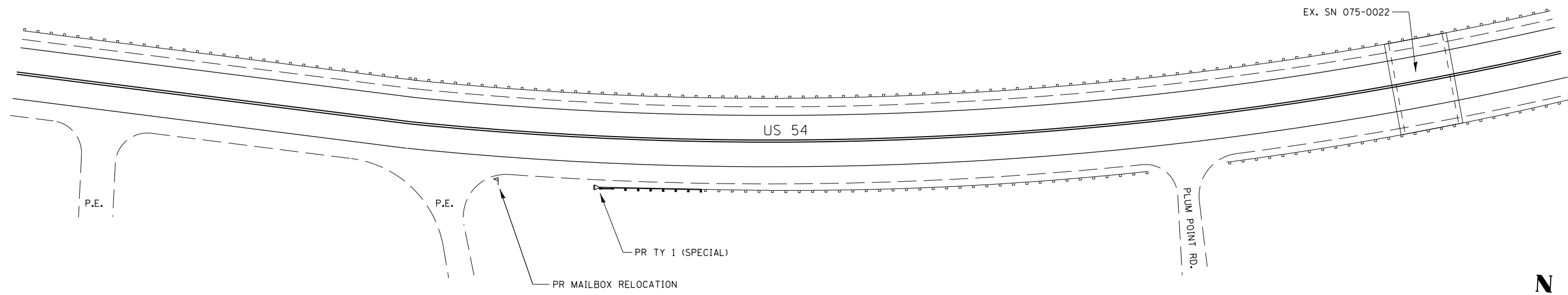
D6 GUARDRAIL END REPL
GUARDRAIL DETAIL SHEETS

SCALE: SHEET NO. OF SHEETS STA. TO STA.

F.A.P. RTE.	SECTION	COUNTY	TOTAL SHEETS	SHEET NO.
	**	*	17	10
CONTRACT NO. 72E16				
ILLINOIS FED. AID PROJECT				



SPECIAL DETAIL
LOCATION "D" ON US 54
(EXISTING)

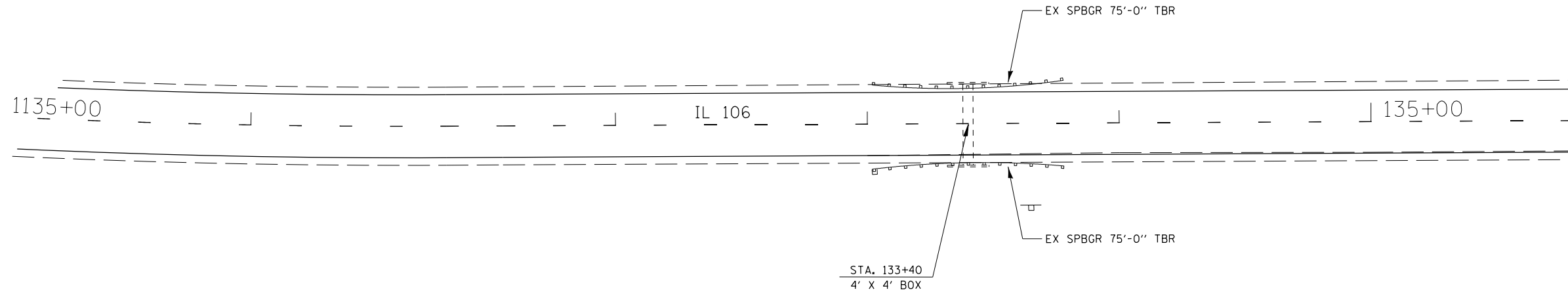
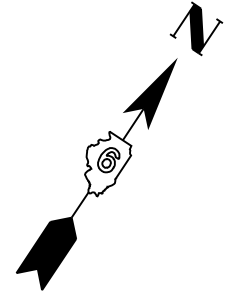


SPECIAL DETAIL
LOCATION "D" ON US 54
(PROPOSED)

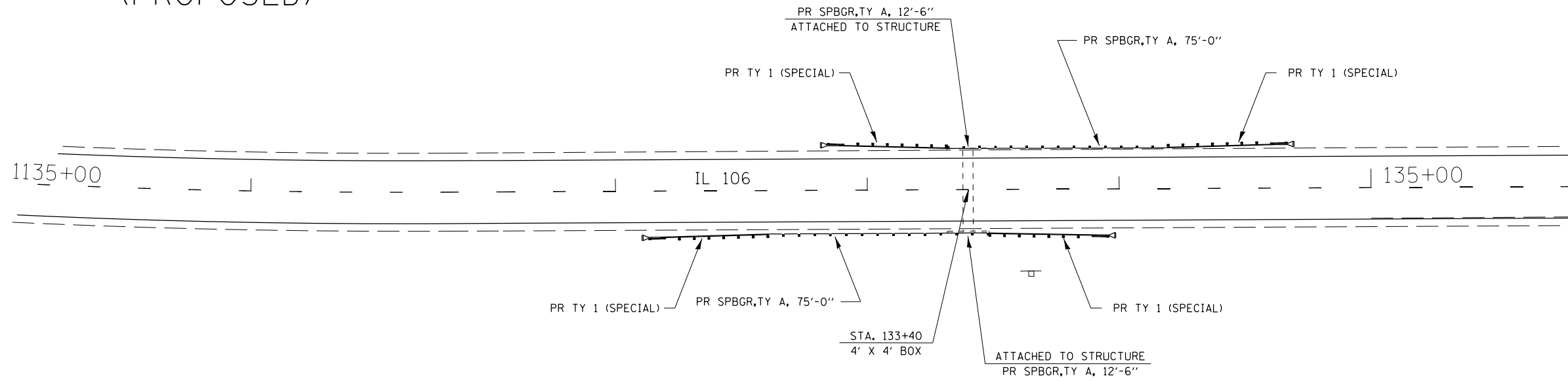
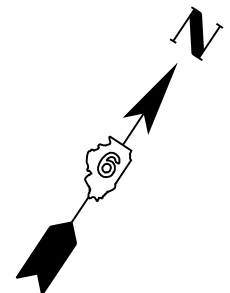


FILE NAME =	USER NAME = Sparksgw	DESIGNED -	REVISED -	STATE OF ILLINOIS DEPARTMENT OF TRANSPORTATION	D6 GUARDRAIL END REPL GUARDRAIL DETAIL SHEETS			F.A.P. RTE.	SECTION	COUNTY	TOTAL SHEETS	SHEET NO.
c:\pwork\pwork\sparksgw\0247448\0672E16-sht-Guardrail-detail.dgn	PLOT SCALE = 100.0000' / in.	DRAWN -	REVISED -					VAR.	**	*	17	11
PLOT DATE = Mar-23-2011 03:44:55PM	DATE -	CHECKED -	REVISED -		SCALE: SHEET NO. OF SHEETS STA. TO STA.			CONTRACT NO. 72E16				
					ILLINOIS FED. AID PROJECT ** D6 GUARDRAIL END REPL 2011-2 PIKE CO.							

SPECIAL DETAIL
 LOCATION "F" ON IL 106
 (EXISTING)



SPECIAL DETAIL
 LOCATION "F" ON IL 106
 (PROPOSED)



FILE NAME =	USER NAME = Sparksgw	DESIGNED -	REVISED -
c:\pwork\pwork\sparksgw\0247448\0672E16-sht-Guardrail-detail.dgn		DRAWN -	REVISED -
	PLOT SCALE = 100.0000' / in.	CHECKED -	REVISED -
	PLOT DATE = Mar-23-2011 03:44:56PM	DATE -	REVISED -

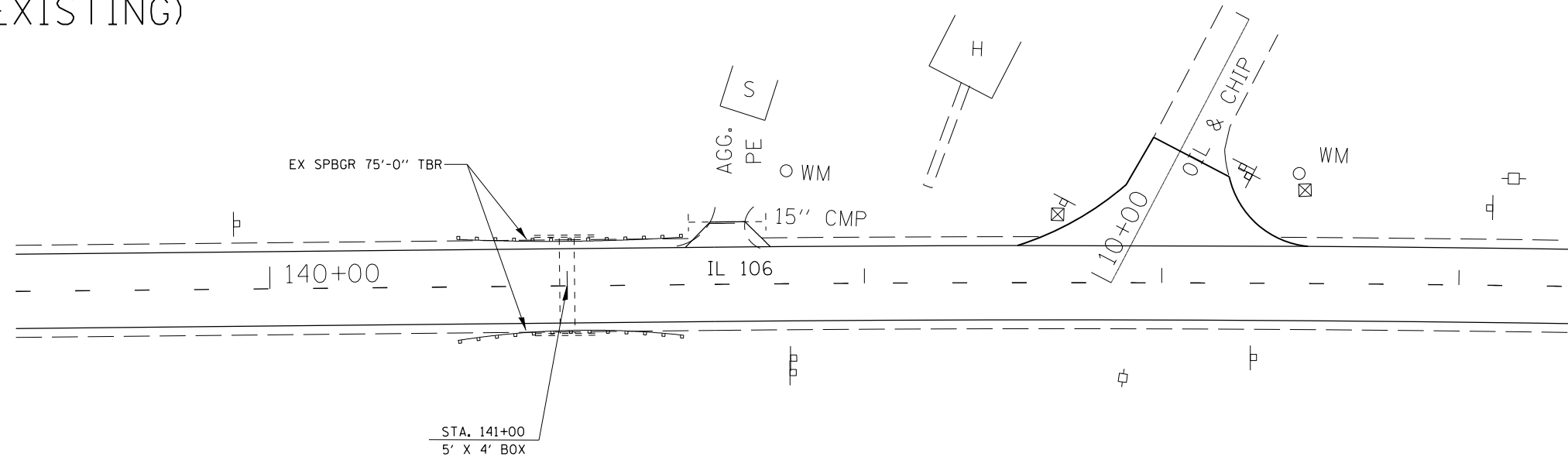
**STATE OF ILLINOIS
 DEPARTMENT OF TRANSPORTATION**

**D6 GUARDRAIL END REPL
 GUARDRAIL DETAIL SHEETS**

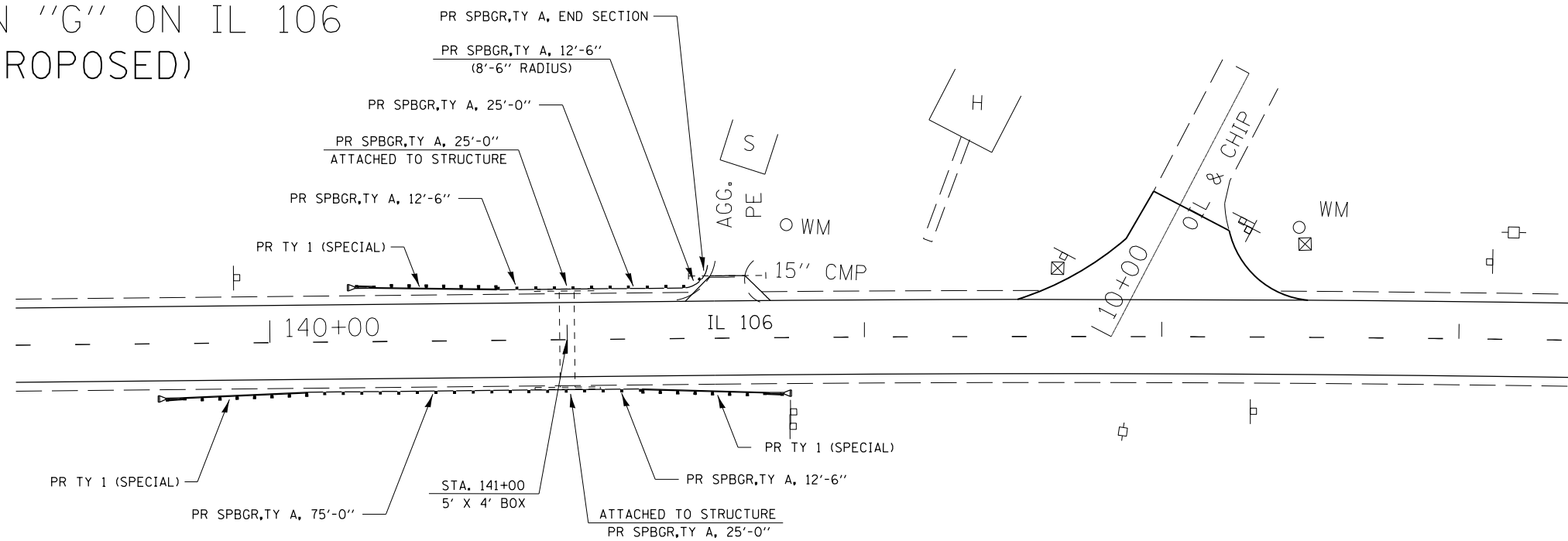
SCALE: SHEET NO. OF SHEETS STA. TO STA.

F.A.P. RTE.	SECTION	COUNTY	TOTAL SHEETS	SHEET NO.
VAR.	**	*	17	12
CONTRACT NO. 72E16				

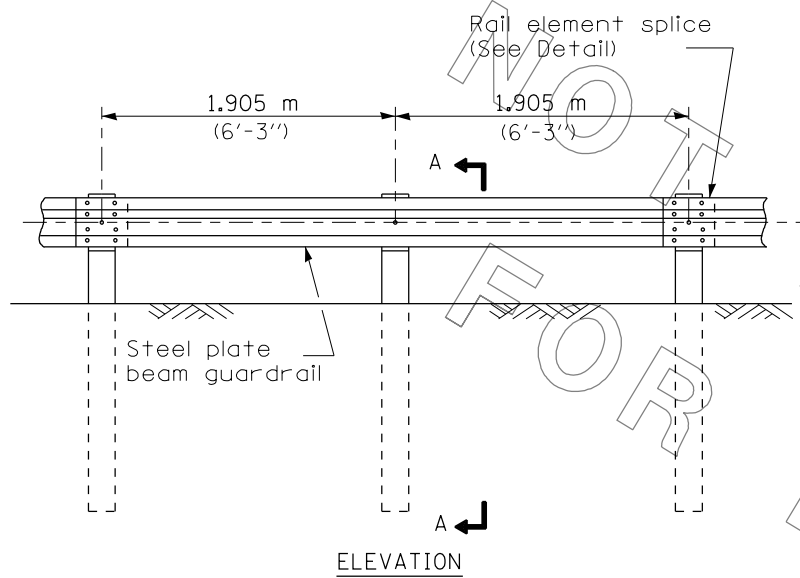
SPECIAL DETAIL
LOCATION "G" ON IL 106
(EXISTING)



SPECIAL DETAIL
LOCATION "G" ON IL 106
(PROPOSED)

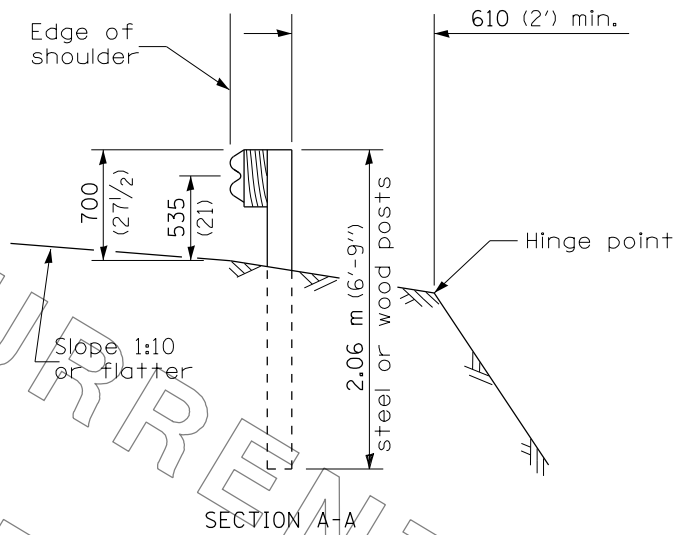


FILE NAME =	USER NAME = sparksgw	DESIGNED -	REVISED -	STATE OF ILLINOIS DEPARTMENT OF TRANSPORTATION	D6 GUARDRAIL END REPL GUARDRAIL DETAIL SHEETS			F.A.P. RTE.	SECTION	COUNTY	TOTAL SHEETS	SHEET NO.
c:\pwork\pwork\sparksgw\0247448\0672E16-sht-Guardrail-detail.dgn	PLOT SCALE = 100.0000' / in.	DRAWN -	REVISED -					VAR.	**	*	17	13
PLOT DATE = Mar-23-2011 03:44:56PM	DATE -	CHECKED -	REVISED -		SCALE: SHEET NO. OF SHEETS STA. TO STA.			CONTRACT NO. 72E16				
		DATE -	REVISED -		ILLINOIS FED. AID PROJECT			** D6 GUARDRAIL END REPL 2011-2 • PIKE CO.				

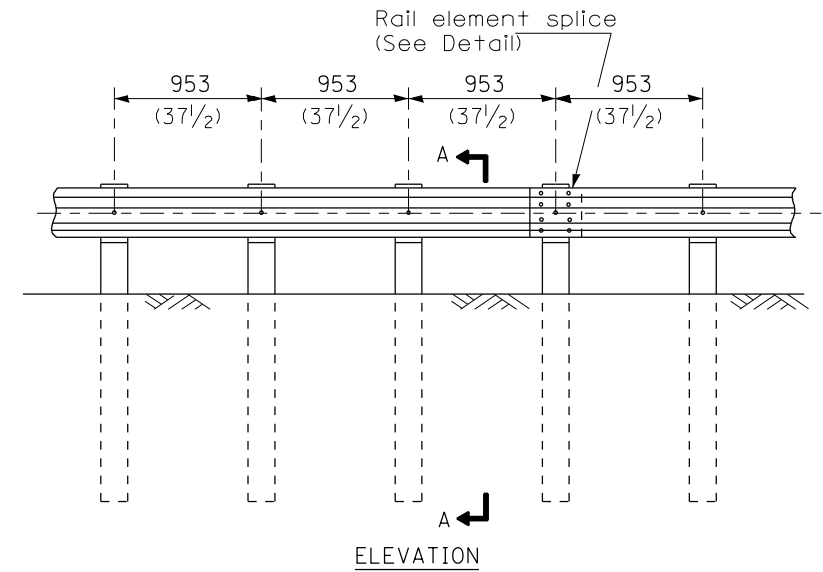


TYPE A

1.905 m (6'-3") Typical post spacing

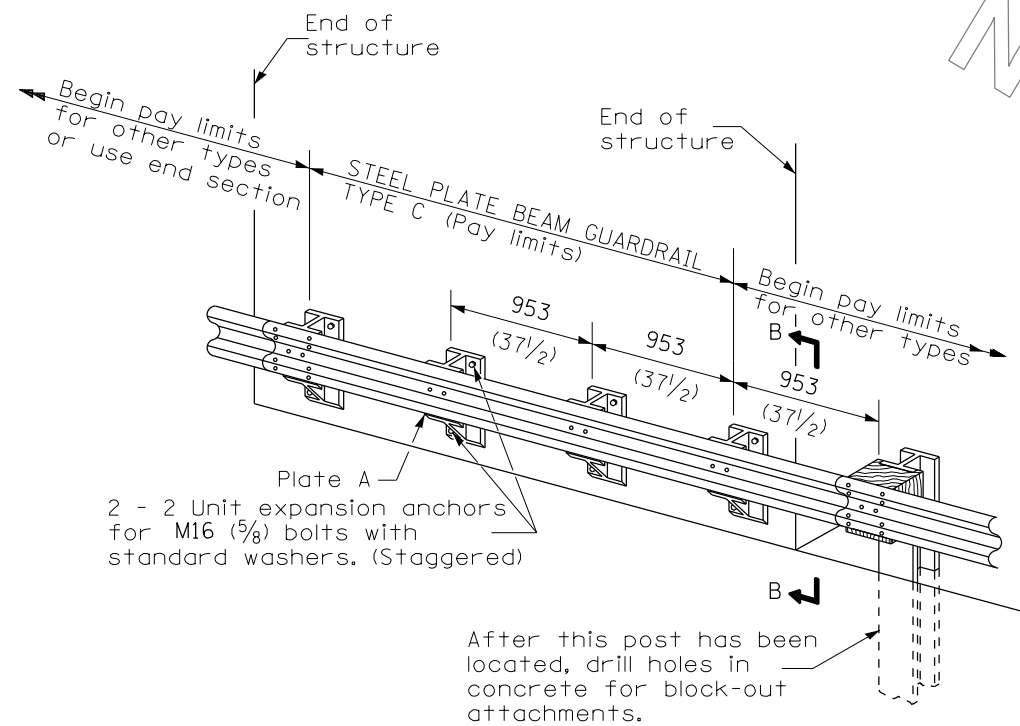


SECTION A-A



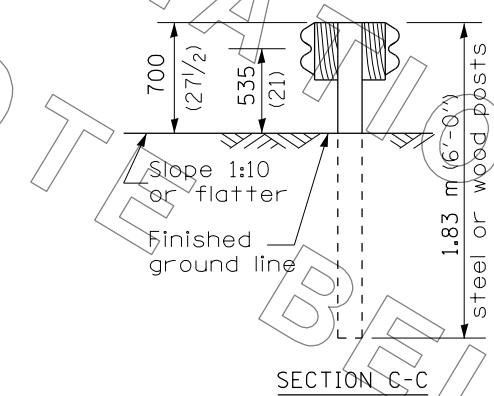
TYPE B

953 (37 1/2) Closed post spacing

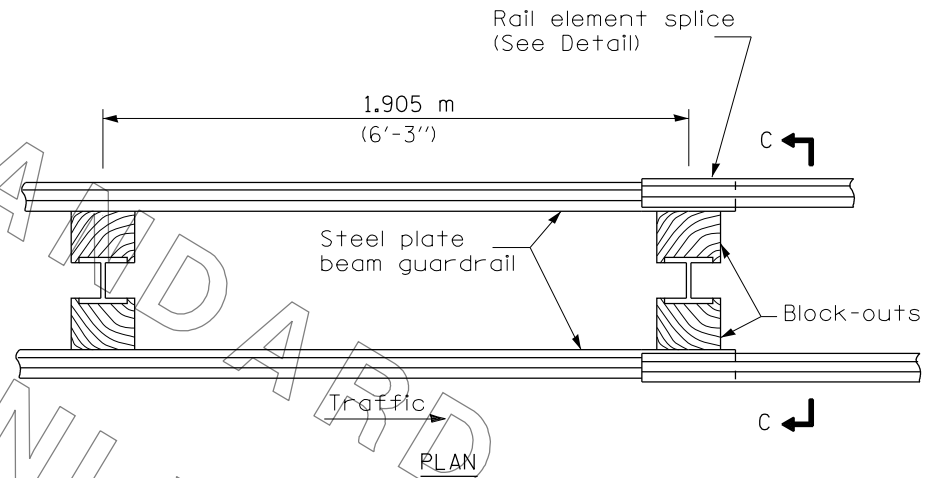


TYPE C

953 (37 1/2) Block-out spacing

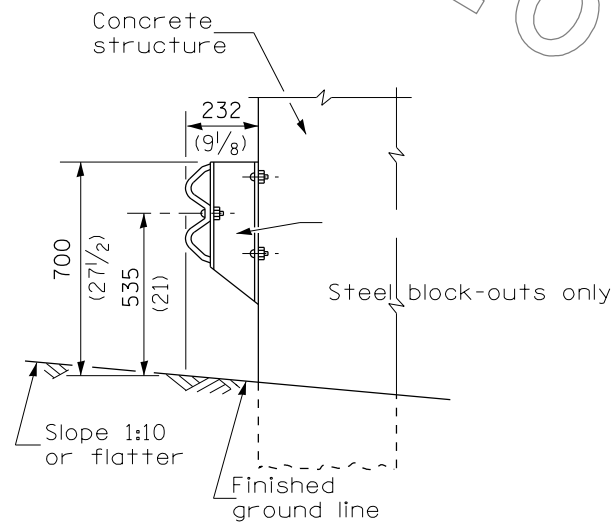


SECTION C-C



TYPE D

Double steel plate beam guardrail
1.905 m (6'-3") typical post spacing



SECTION B-B

NOTE:

THIS DETAIL SHALL BE USED FOR GUARDRAIL REPAIRS WHERE NEW STEEL PLATE BEAM GUARDRAIL AND TERMINAL SECTIONS WILL BE TIED INTO EXISTING STEEL PLATE BEAM GUARDRAIL AS WELL AS FOR REMOVING AND RE-ERECTING THE RAIL ELEMENT.

GENERAL NOTES

All slope ratios are expressed as units of vertical displacement to units of horizontal displacement (V:H).

All dimensions are in millimeters (inches) unless otherwise shown.

The existing steel posts may be drilled to match the bolt pattern shown herein for the wood block-out, or a new steel post shall be provided.

This detail is applicable to the guardrail system used prior to January 1, 2007. For details on the Midwest Guardrail System, see Standard 630001.

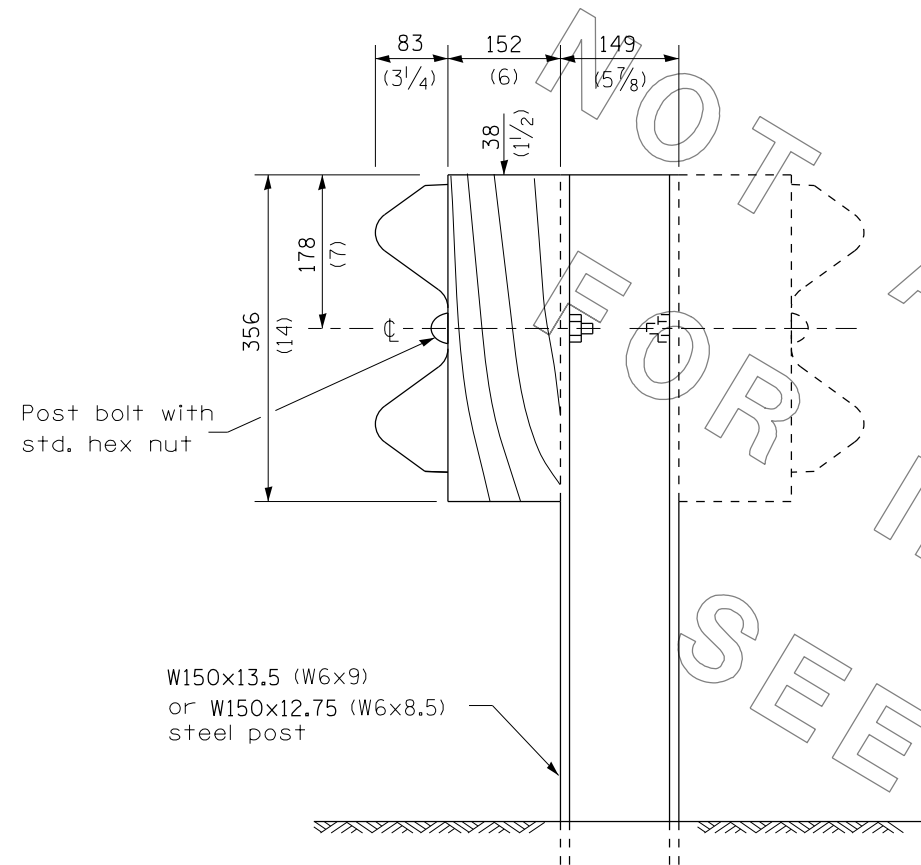
FILE NAME =	USER NAME = Sparksgw	DESIGNED -	REVISED -
c:\pwork\work\pwork\sparksgw\0247448\0672E16-sht-guardrail-modification.dgn		DRAWN -	REVISED -
		CHECKED -	REVISED -
		DATE -	REVISED -
PLOT SCALE = 100.0000' / 1m.			
PLOT DATE = Mar-23-2011 03:45:00PM			

**STATE OF ILLINOIS
DEPARTMENT OF TRANSPORTATION**

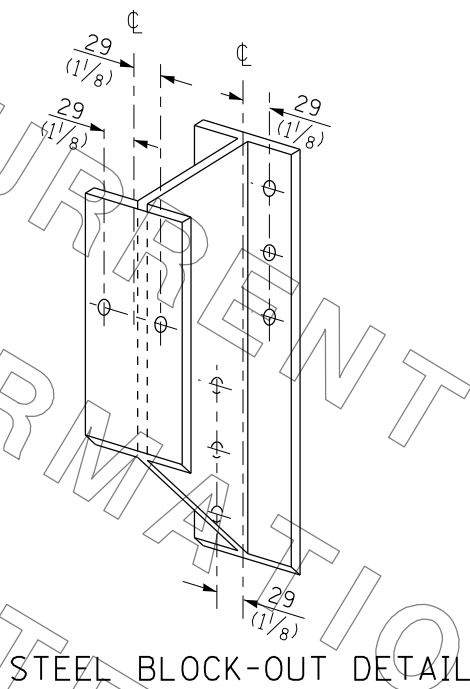
**D6 GUARDRAIL END REPL
GUARDRAIL MODIFICATION SHEETS**

SCALE: SHEET NO. OF SHEETS STA. TO STA.

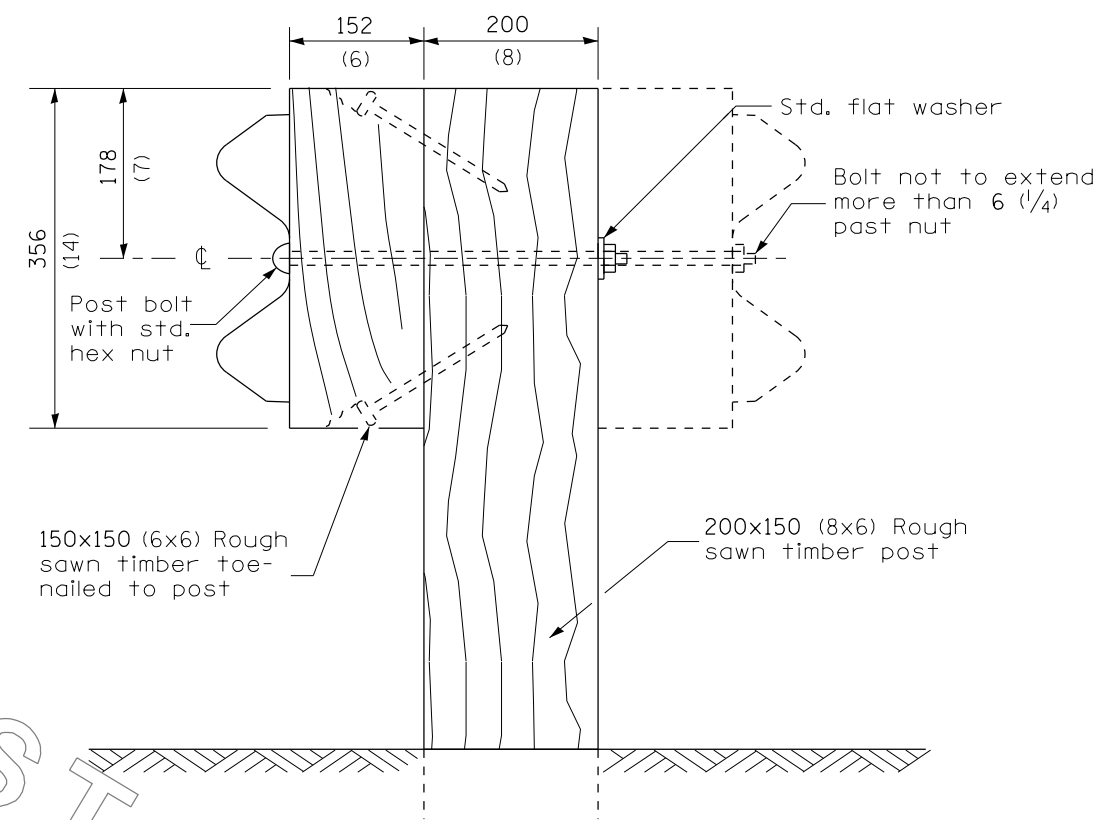
F.A.P. RTE.	SECTION	COUNTY	TOTAL SHEETS	SHEET NO.
	**	*	17	14
CONTRACT NO. 72E16				



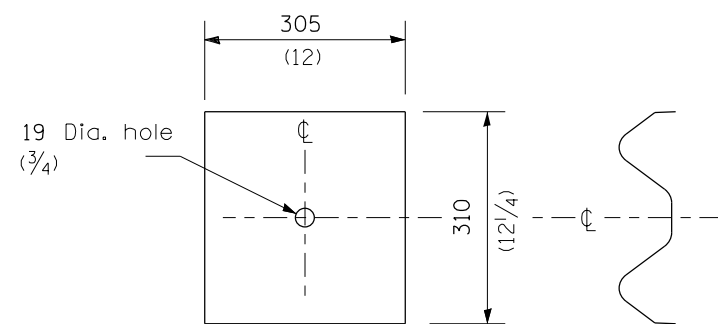
STEEL POST CONSTRUCTION



STEEL BLOCK-OUT DETAIL



WOOD POST CONSTRUCTION



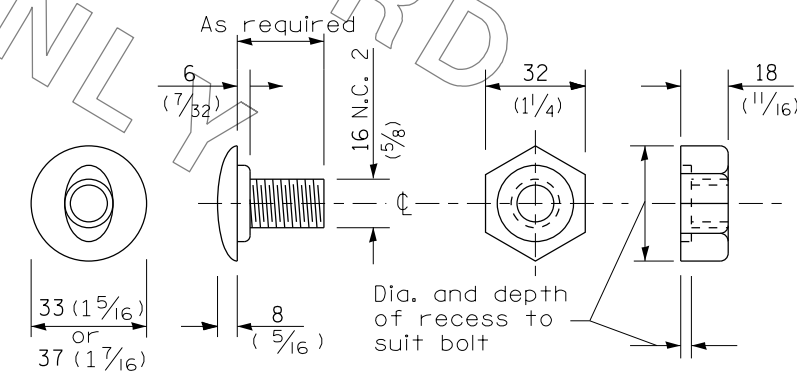
NOTE

Plate A shall be placed between rail element and block-out at non-splice mounting points only when steel block-outs are used.

PLATE A

NOTE:

THIS DETAIL SHALL BE USED FOR GUARDRAIL REPAIRS WHERE NEW STEEL PLATE BEAM GUARDRAIL AND TERMINAL SECTIONS WILL BE TIED INTO EXISTING STEEL PLATE BEAM GUARDRAIL AS WELL AS FOR REMOVING AND RE-ERECTING THE RAIL ELEMENT.



POST OR SPLICE BOLT & NUT

FILE NAME =	USER NAME = Sparksgw	DESIGNED -	REVISED -
ei:\pw\work\p\dot\sparksgw\10247448\0672E16-sht-guardrail-modification.dgn		DRAWN -	REVISED -
	PLOT SCALE = 100.0000' / 1in.	CHECKED -	REVISED -
	PLOT DATE = Mar-23-2011 03:45:00PM	DATE -	REVISED -

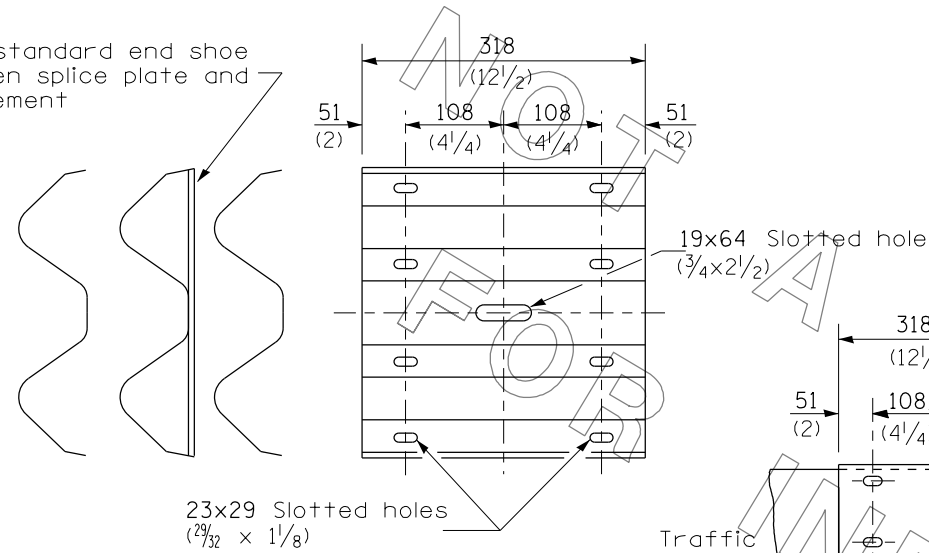
**STATE OF ILLINOIS
DEPARTMENT OF TRANSPORTATION**

**D6 GUARDRAIL END REPL
GUARDRAIL MODIFICATION SHEETS**

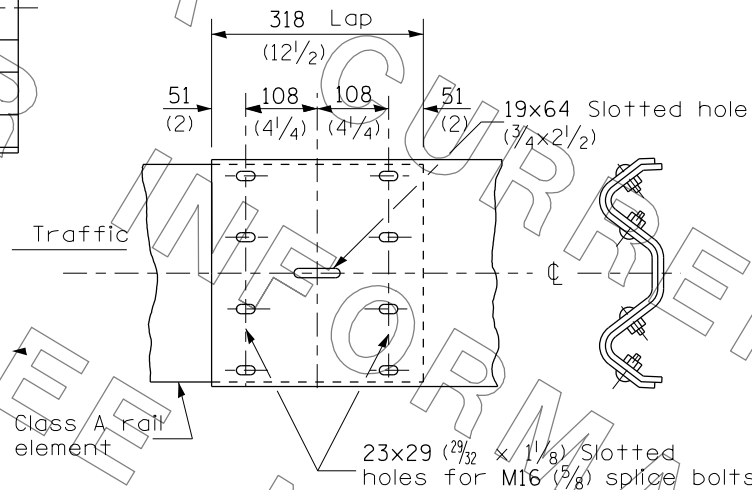
SCALE: SHEET NO. OF SHEETS STA. TO STA.

F.A.P. RTE.	SECTION	COUNTY	TOTAL SHEETS	SHEET NO.
	**	*	17	15
CONTRACT NO. 72E16				

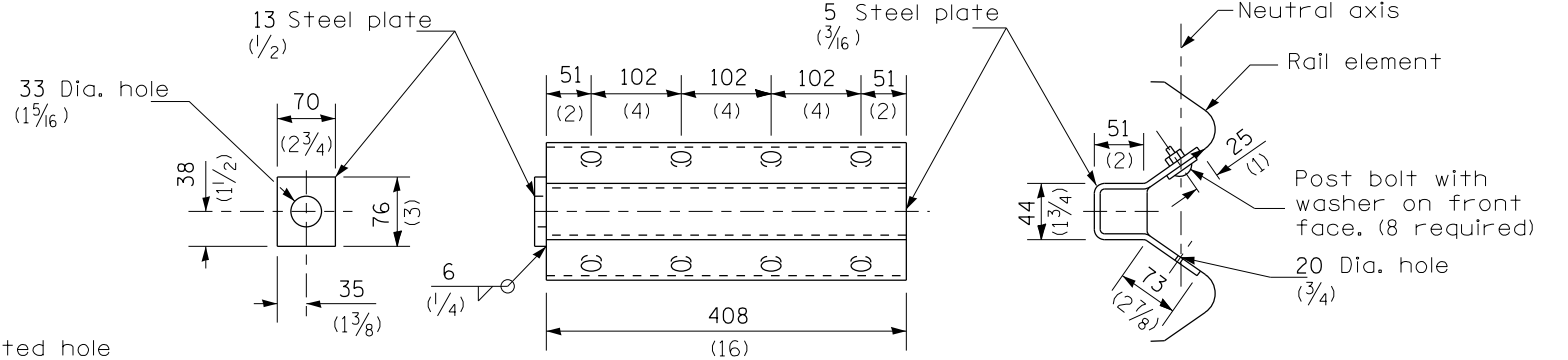
Place standard end shoe between splice plate and rail element



SPLICE PLATE

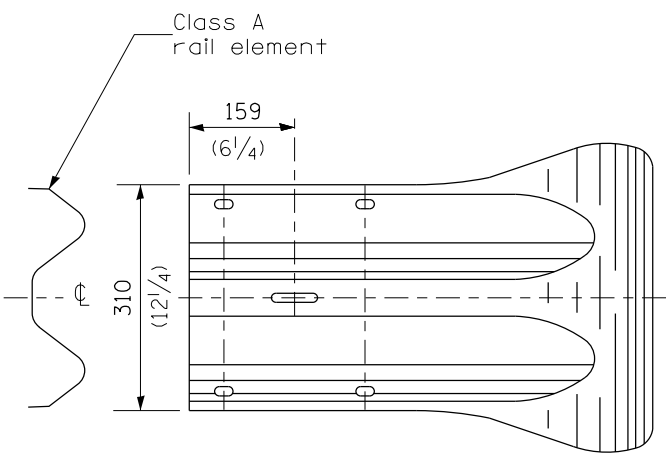
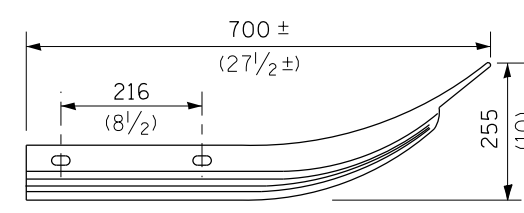


RAIL ELEMENT SPLICE

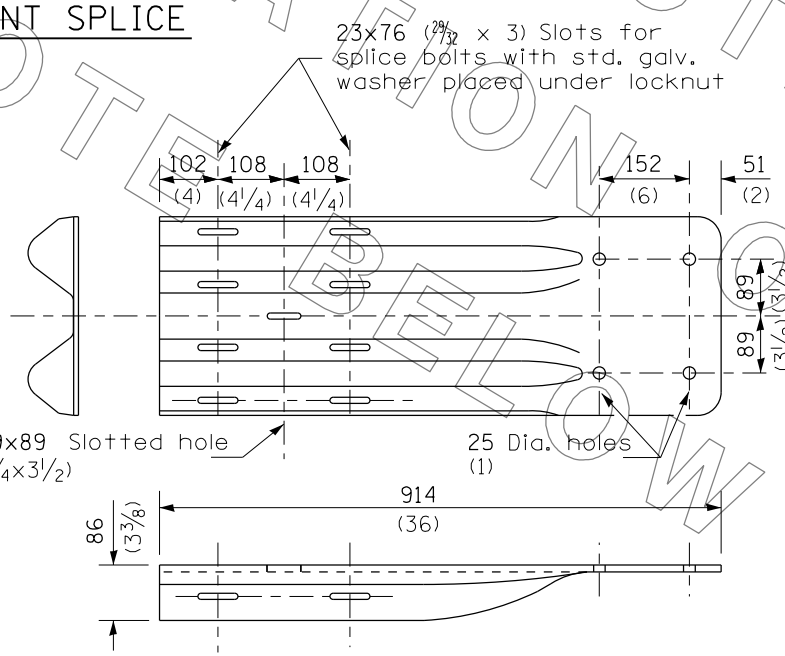


NOTE
Anchor plate T shall be used to attach cable assembly to guardrail when required on traffic barrier terminals.

ANCHOR PLATE T DETAILS



END SECTION

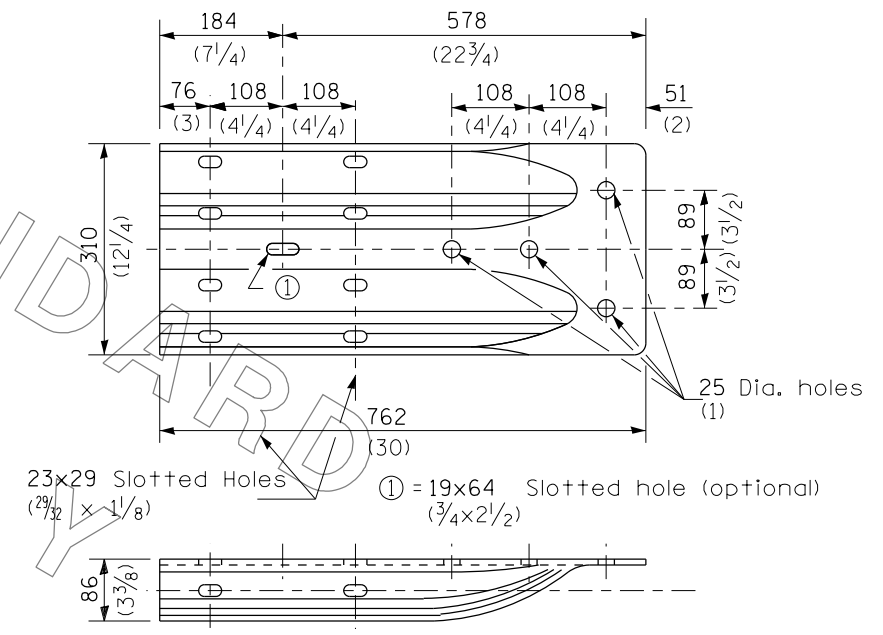


NOTE
When end shoe is attached to a bridge parapet which has an expansion joint, the bolts shall be provided with a locknut or double nut and shall be tightened only to a point that will allow guardrail movement.

The standard end shoe shall be attached to the concrete with pre-drilled or self-drilling anchor bolts. The anchor cone shall be set flush with the surface of the concrete.

Externally threaded studs protruding from the surface of the concrete will not be permitted.

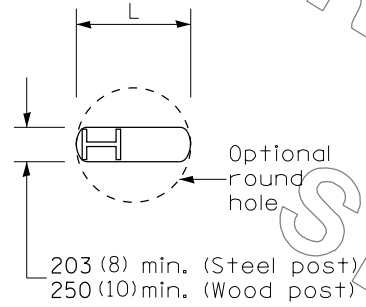
END SHOE



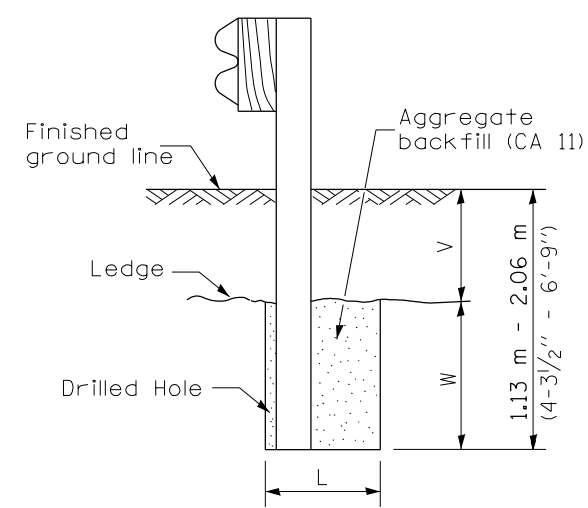
ALTERNATE END SHOE

NOTE:
THIS DETAIL SHALL BE USED FOR GUARDRAIL REPAIRS WHERE NEW STEEL PLATE BEAM GUARDRAIL AND TERMINAL SECTIONS WILL BE TIED INTO EXISTING STEEL PLATE BEAM GUARDRAIL AS WELL AS FOR REMOVING AND RE-ERECTING THE RAIL ELEMENT.

FILE NAME =	USER NAME = Sparksgw	DESIGNED -	REVISED -	STATE OF ILLINOIS DEPARTMENT OF TRANSPORTATION	D6 GUARDRAIL END REPL GUARDRAIL MODIFICATION SHEETS			F.A.P. RTE.	SECTION	COUNTY	TOTAL SHEETS	SHEET NO.
c:\pwwork\pwwork\sparksgw\d0247448\0672E16-sht-guardrail-modification.dgn		DRAWN -	REVISED -		VAR.	**	*	17	16			
PLOT SCALE = 100.0000' / in.		CHECKED -	REVISED -		CONTRACT NO. 72E16							
PLOT DATE = Mar-23-2011 03:45:01PM		DATE -	REVISED -		ILLINOIS FED. AID PROJECT							
					SCALE:	SHEET NO.	OF SHEETS	STA.	TO STA.	ILLINOIS FED. AID PROJECT		
										** D6 GUARDRAIL END REPL 2011-2		
										PIKE CO.		



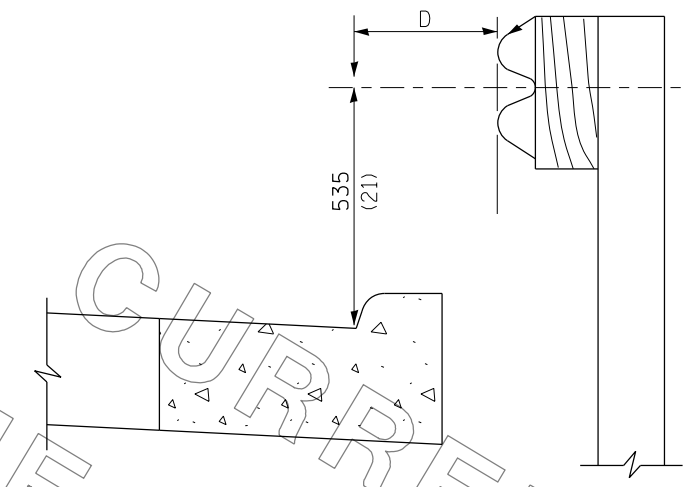
PLAN



ELEVATION

FOOTING FOR POST WHEN IMPERVIOUS MATERIAL IS ENCOUNTERED

Note:
Ledge line is top of rock ledge or hard slag fill.



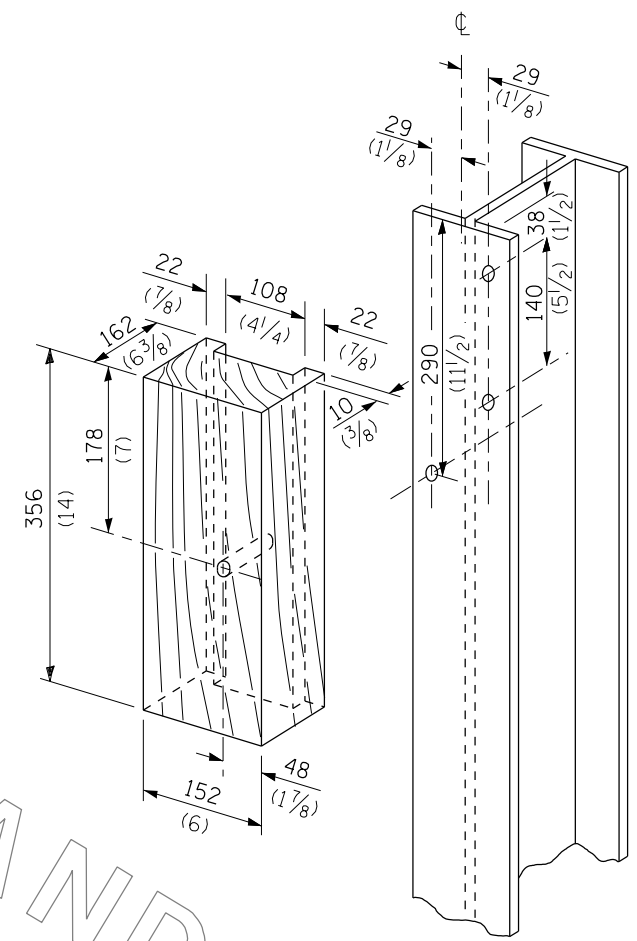
Note:
If it is necessary for D to be more than 300 (12) and less than 3.0 m (10'-0'') type M-5 (M-2) curb and gutter (Std. 606001) shall be used in front of and in advance of the guardrail.

GUARDRAIL PLACED BEHIND CURB

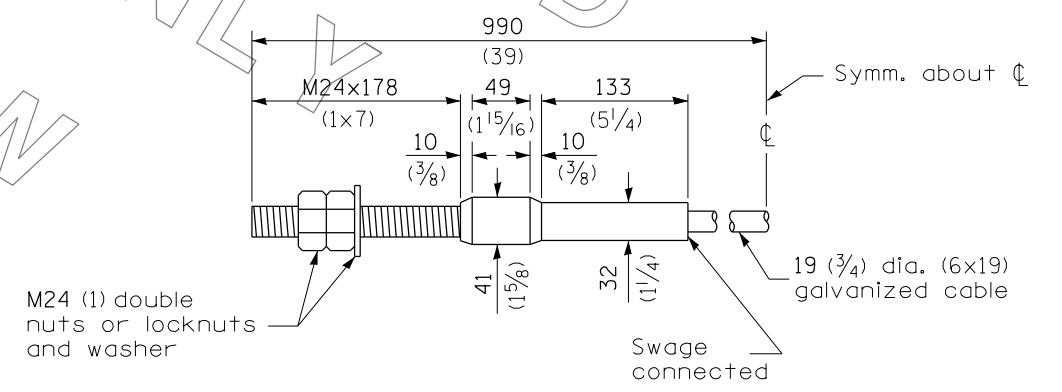
(D = 0 desirable to 300 (12) maximum)

V	W	L	
		Steel Post	Wood Post
0 - 460 (0 - 18)	610 (24)	530 (21)	580 (23)
>460 - 825 (>18 - 41.5)	305 (12)	203 (8)	250 (10)
>825 - 1.13 m (>41.5 - 53.5)	305 - 0 (12 - 0)	203 (8)	250 (10)

NOTE:
THIS DETAIL SHALL BE USED FOR GUARDRAIL REPAIRS WHERE NEW STEEL PLATE BEAM GUARDRAIL AND TERMINAL SECTIONS WILL BE TIED INTO EXISTING STEEL PLATE BEAM GUARDRAIL AS WELL AS FOR REMOVING AND RE-ERECTING THE RAIL ELEMENT.



WOOD BLOCK-OUT AND STEEL POST DETAILS



CABLE ASSEMBLY

(18,100 kg (40,000 lbs.) min. breaking strength)
Tighten to taut tension.