

STATE OF ILLINOIS
DEPARTMENT OF TRANSPORTATION
DIVISION OF HIGHWAYS

**PROPOSED
HIGHWAY PLANS**

FAS 1585 ROUTE IL 10
SECTION 4RS-6
PROJECT RS-1585(100)
TYPE of IMPROVEMENT: 3P
MASON COUNTY

C-96-056-11

F.A. RTE. 1585	SECTION 4RS-6	COUNTY MASON	TOTAL SHEETS 27	SHEET NO. 3
		ILLINOIS	CONTRACT NO. 72E28	

INDEX OF SHEETS

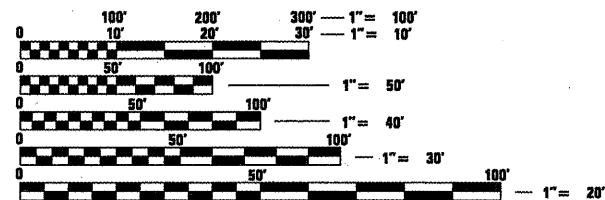
- 1 COVER SHEET
- 2 GENERAL NOTES
- 3 SUMMARY OF QUANTITIES
- 4-5 SCHEDULES
- 6-8 TYPICAL SECTIONS
- 9-22 PLAN VIEW
- 23-24 BUTT JOINT/TRANSITION DETAILS
- 25 SAFETY EDGE DETAIL
- 26-27 ENTRANCE AND MAILBOX TURNOUT DETAILS

STANDARDS

001001-02	701301-04
001006	701306-03
000001-06	701311-03
442201-03	701501-06
482011-03	701901-01
701006-03	780001-02
701011-02	781001-03
701201-04	

IL 10

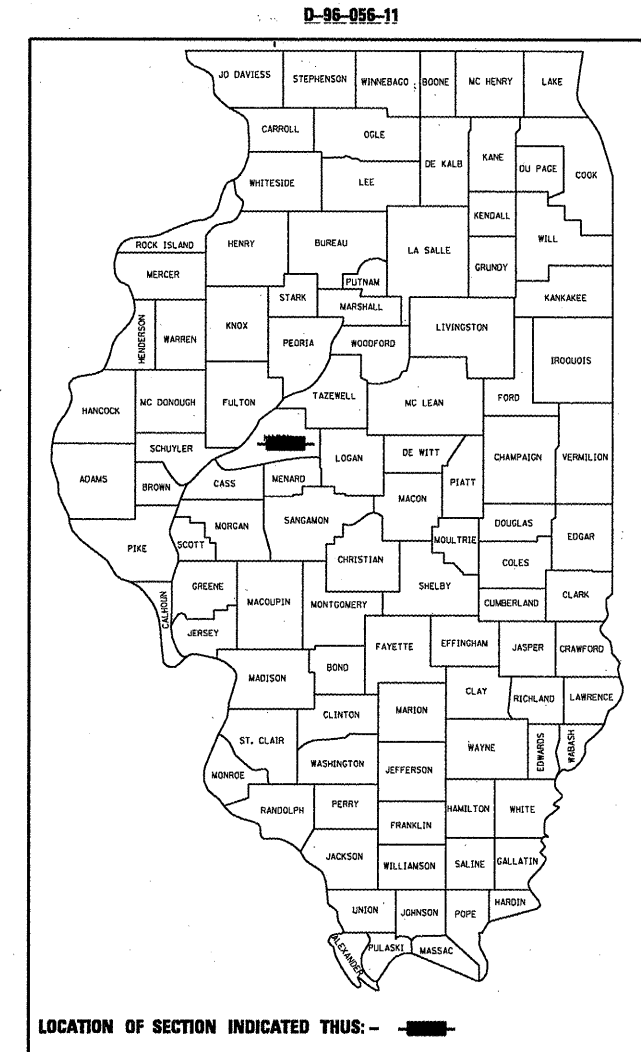
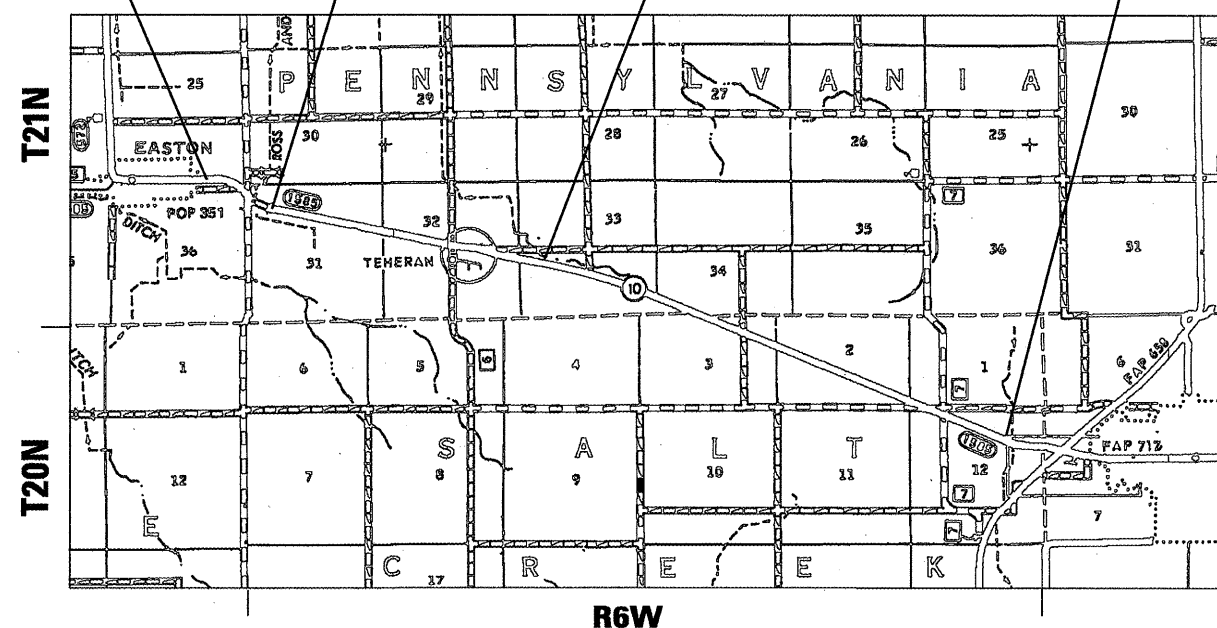
ADT (2009) = 1,250
%MU + %SU = 19%



FULL SIZE PLANS HAVE BEEN PREPARED USING STANDARD ENGINEERING SCALES. REDUCED SIZED PLANS WILL NOT CONFORM TO STANDARD SCALES. IN MAKING MEASUREMENTS ON REDUCED PLANS, THE ABOVE SCALES MAY BE USED.

J.U.L.I.E.
JOINT UTILITY LOCATION INFORMATION FOR EXCAVATION
1-800-892-0123
OR 811

BEGIN IMPROVEMENT FAS 572 & 1585 (IL 10) STA 815+90.24 AH
STATION EQN. 868+68.10 BK = 865+68.90 AH
STATION EQN. 964+98.50 BK = 965+11.00 AH
END IMPROVEMENT FAS 572 & 1585 (IL 10) STA 1182+36



PROJECT ENGINEER: JOHN NEGANGARD (217) 782-6990
SENIOR TEAM ENGINEER: VINCE MADONIA (217) 785-9046

GROSS LENGTH = 35,827.6 FT. = 6.786 MILE
NET LENGTH = 35,827.6 FT. = 6.786 MILE

CONTRACT NO. 72E28

STATE OF ILLINOIS
DEPARTMENT OF TRANSPORTATION
DIVISION OF HIGHWAYS

SUBMITTED MARCH 25 20 11
Roger Z. Dahl
DEPUTY DIRECTOR OF HIGHWAYS, REGION ENGINEER

May 13 20 11
Scott E. Stitt, P.E.
ENGINEER OF DESIGN AND ENVIRONMENT

May 13 20 11
Christine M. Reed
DIRECTOR OF HIGHWAYS, CHIEF ENGINEER

**PRINTED BY THE AUTHORITY
OF THE STATE OF ILLINOIS**