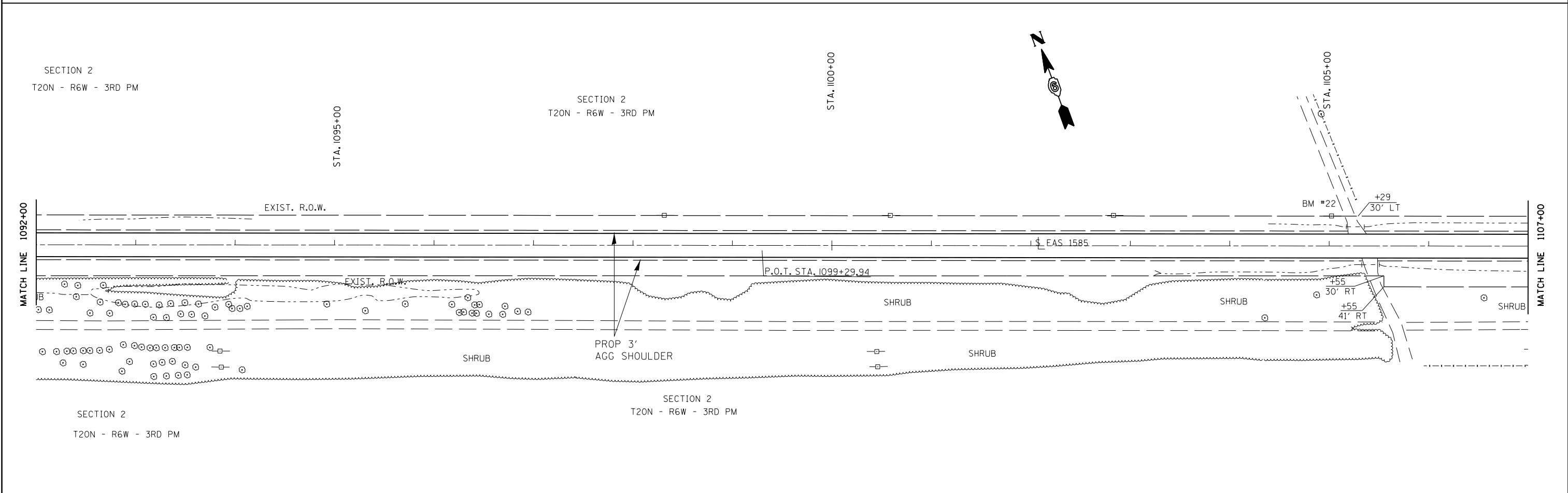
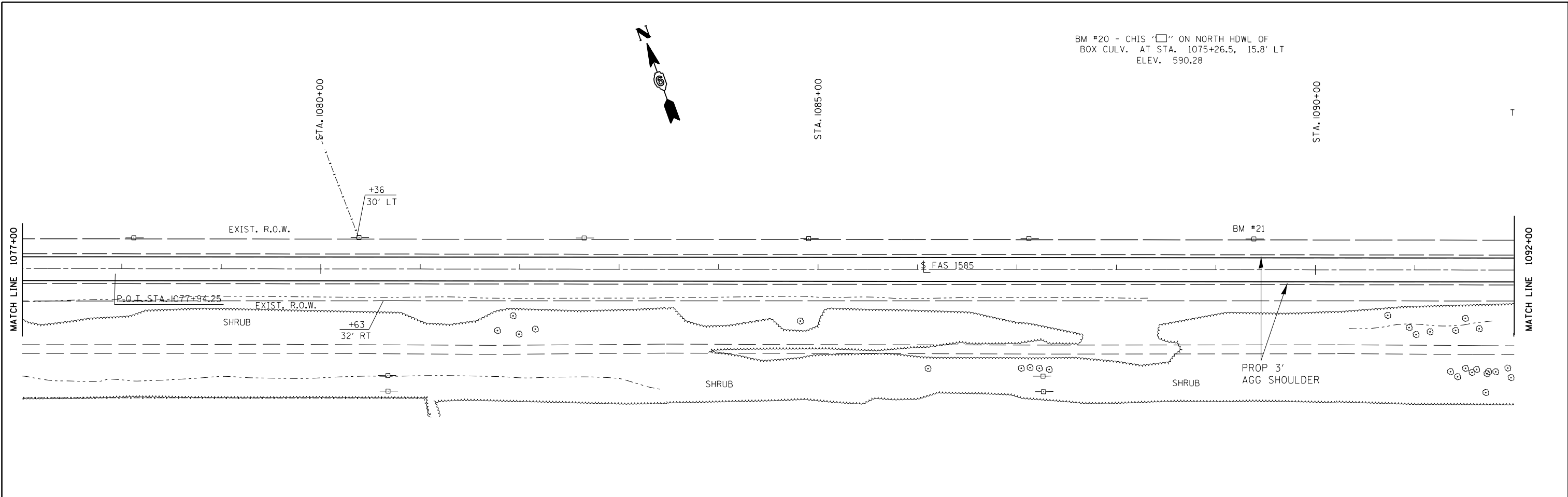


BM #20 - CHIS '□' ON NORTH HDWL OF  
BOX CULV. AT STA. 1075+26.5, 15.8' LT  
ELEV. 590.28



FILE NAME =	USER NAME = Sparksgw	DESIGNED -	REVISED -
c:\pwwork\pwwork\sparksgw\10255669\0672E28-sht-plan sheets.dgn		DRAWN -	REVISED -
PLOT SCALE = 100.0000' / 1" =		CHECKED -	REVISED -
PLOT DATE = Mar-25-2011 10:16:39AM		DATE -	REVISED -

**STATE OF ILLINOIS  
DEPARTMENT OF TRANSPORTATION**

<b>PLAN SHEET</b>			
SCALE:	SHEET NO.	OF SHEETS	STA. TO STA.

F.A.S. RTE.	SECTION	COUNTY	TOTAL SHEETS	SHEET NO.
1585	4RS-6	MASON	27	19
CONTRACT NO. 72E28				
ILLINOIS FED. AID PROJECT				