

F.A. RTE.	SECTION	COUNTY	TOTAL SHEETS	SHEET NO.
VAR	D6 SEAL COAT 2011-1	SANGAMON	6	1
		ILLINOIS	CONTRACT NO. 72E42	

STATE OF ILLINOIS
DEPARTMENT OF TRANSPORTATION
DIVISION OF HIGHWAYS
PROPOSED
HIGHWAY PLANS

ROUTE VARIOUS
SECTION D6 SEAL COAT 2011-1

TYPE of IMPROVEMENT
SANGAMON COUNTY

C-96-070-11

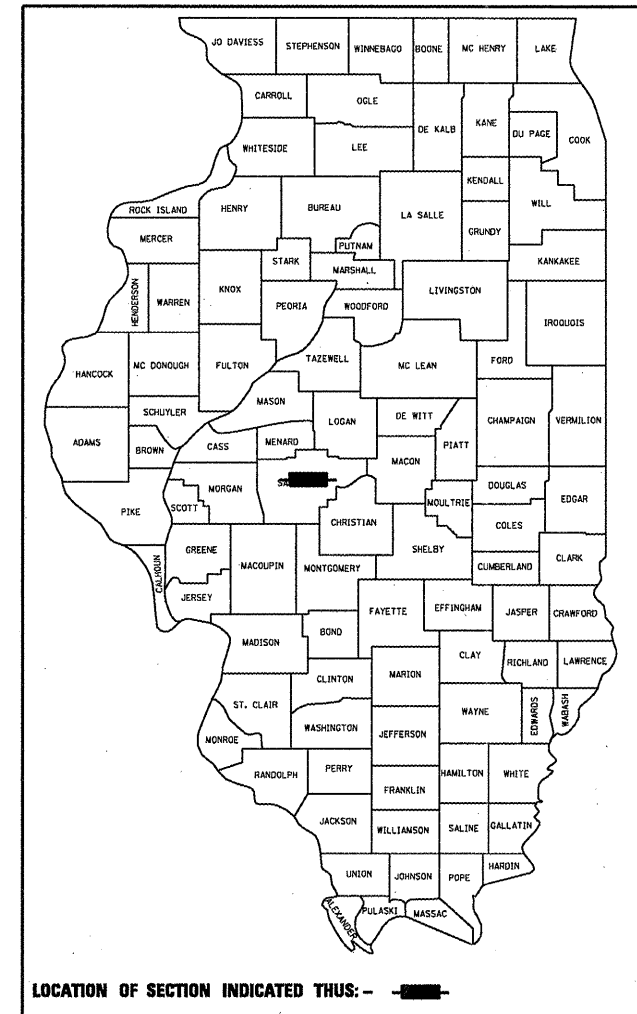
INDEX OF SHEETS

- 1 COVER SHEET
- 2 GENERAL NOTES
- 3 SUMMARY OF QUANTITIES
- 4 SCHEDULES
- 5 PLAN VIEW
- 6 PAVEMENT MARKING

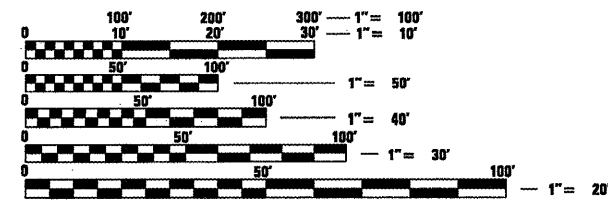
STANDARDS

001006
000001-06

D-96-070-11

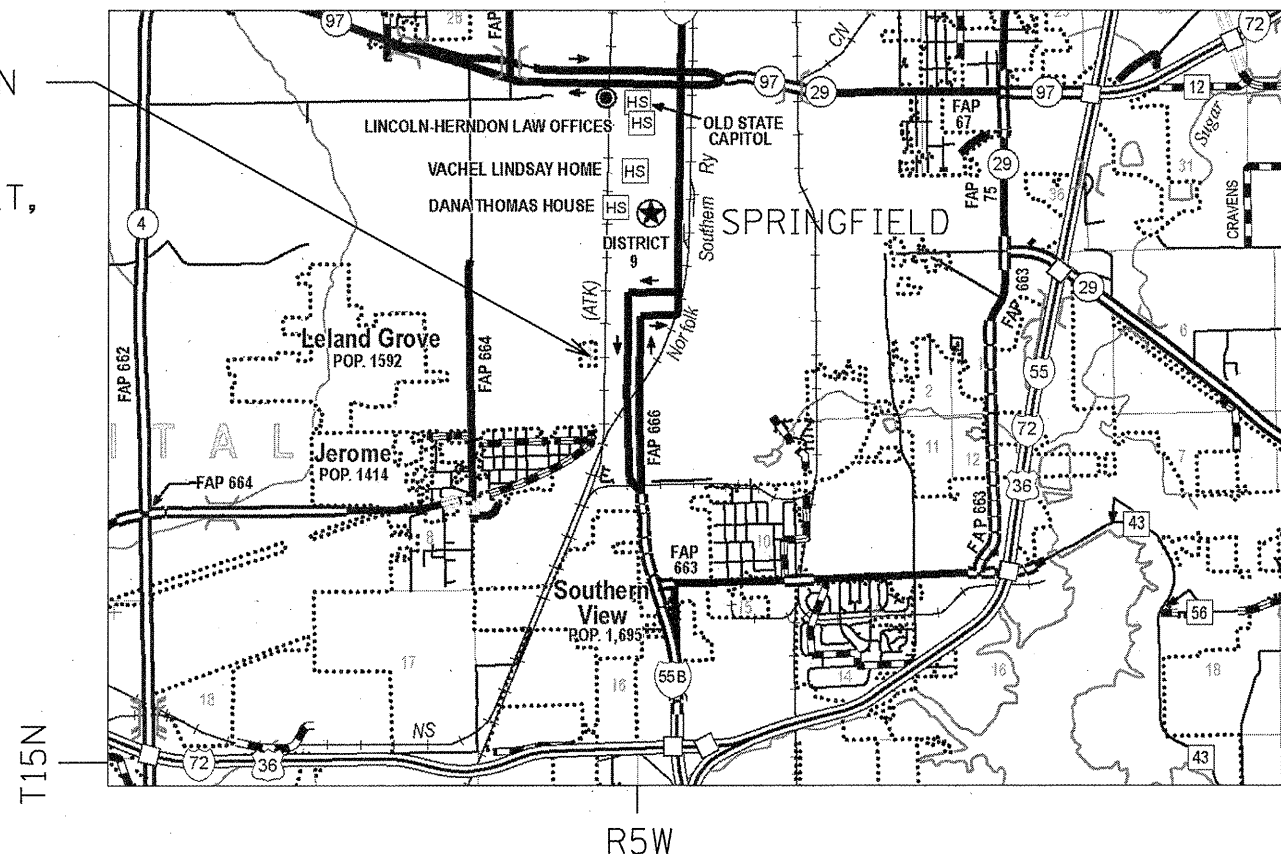


PROJECT LOCATION
(IDOT DISTRICT 6
HEADQUARTERS -
126 E. ASH STREET,
SPRINGFIELD)



FULL SIZE PLANS HAVE BEEN PREPARED USING STANDARD ENGINEERING SCALES. REDUCED SIZED PLANS WILL NOT CONFORM TO STANDARD SCALES. IN MAKING MEASUREMENTS ON REDUCED PLANS, THE ABOVE SCALES MAY BE USED.

J.U.L.I.E.
JOINT UTILITY LOCATION INFORMATION FOR EXCAVATION
1-800-892-0123
OR 811



PROJECT ENGINEER: JOHN NEGANGARD (217) 782-6990
SENIOR TEAM ENGINEER: VINCE MADONIA (217) 785-9046

GROSS AND NET LENGTH 0.1 MILES (SPOT IMPROVEMENT)

CONTRACT NO. 72E42

STATE OF ILLINOIS
DEPARTMENT OF TRANSPORTATION
DIVISION OF HIGHWAYS

SUBMITTED April 8 20 11
Reggie Z. Dush
DEPUTY DIRECTOR OF HIGHWAYS, REGION ENGINEER

May 13 20 11
Scott E. Stitt P.E. Ia
acting ENGINEER OF DESIGN AND ENVIRONMENT

May 13 20 11
Christine M. Reed Ia
DIRECTOR OF HIGHWAYS, CHIEF ENGINEER

**PRINTED BY THE AUTHORITY
OF THE STATE OF ILLINOIS**

GENERAL NOTES

1. ANY REFERENCE TO A STANDARD IN THESE PLANS SHALL BE INTERPRETED TO MEAN THE EDITION AS INDICATED BY THE SUB NUMBER LISTED IN THE INDEX OF SHEETS OR THE COPY OF THE STANDARD INCLUDED IN THESE PLANS.
2. IN ADDITION TO FIELD SURVEYS, PLAN DIMENSIONS AND DETAILS RELATIVE TO THE EXISTING FACILITIES HAVE BEEN TAKEN FROM EXISTING PLANS AND ARE SUBJECT TO CONSTRUCTION VARIATIONS. IT SHALL BE THE CONTRACTOR'S RESPONSIBILITY TO VERIFY SUCH DIMENSIONS AND DETAILS IN THE FIELD. SUCH VARIATIONS SHALL NOT BE A CAUSE FOR ADDITIONAL COMPENSATION DUE TO A CHANGE IN THE SCOPE OF WORK; HOWEVER, THE CONTRACTOR WILL BE PAID FOR THE QUANTITY ACTUALLY FURNISHED AT THE UNIT PRICE BID FOR THE WORK.
3. THE CONTRACTOR SHALL BE RESPONSIBLE FOR PROTECTING UTILITY PROPERTY FROM CONSTRUCTION OPERATIONS, AS OUTLINED IN ARTICLE 107.31 OF THE STANDARD SPECIFICATIONS. THE J.U.L.I.E. NUMBER IS 1-800-892-0123. A MINIMUM OF 48 HOURS ADVANCE NOTICE IS REQUIRED.
4. STRIPING TO BE APPLIED UPON COMPLETION BY IDOT D6 BUREAU OF OPERATIONS
5. PAVEMENT MARKING REMOVAL AREAS CONSIST OF EXISTING THERMOPLASTIC HANDICAPPED PARKING STALLS AND ANY OTHER AREAS SPECIFIED BY THE ENGINEER, INCLUDING REMOVING AREAS WITH OIL DRIPS.

DISTRICT SIX	
EXAMINED <u>April 8</u>	20 <u>11</u>
<i>Chris Walker</i>	
OPERATIONS ENGINEER	
EXAMINED <u>APRIL 4</u>	20 <u>11</u>
<i>Tommy Felt</i>	
PROJECT IMPLEMENTATION ENGINEER	
EXAMINED <u>MARCH 4</u>	20 <u>11</u>
<i>John C. Wagoner</i>	
PROGRAM DEVELOPMENT ENGINEER	

FILE NAME =	USER NAME = basj	DESIGNED -	REVISED -	STATE OF ILLINOIS DEPARTMENT OF TRANSPORTATION	GENERAL NOTES	F.A. RTE.	SECTION	COUNTY	TOTAL SHEETS	SHEET NO.	
c:\pw\work\pwidot\basj\d0265140\0672E42	sh-t-gennote.dgn	DRAWN -	REVISED -			VAR	D6 SEAL COAT 2011-1	SANGAMON	6	2	
	PLOT SCALE = 100.0000' / IN.	CHECKED -	REVISED -			SCALE: SHEET NO. OF SHEETS STA. TO STA.		CONTRACT NO. 72E42			
	PLOT DATE = Apr-08-2011 01:49:14PM	DATE -	REVISED -			ILLINOIS FED. AID PROJECT					

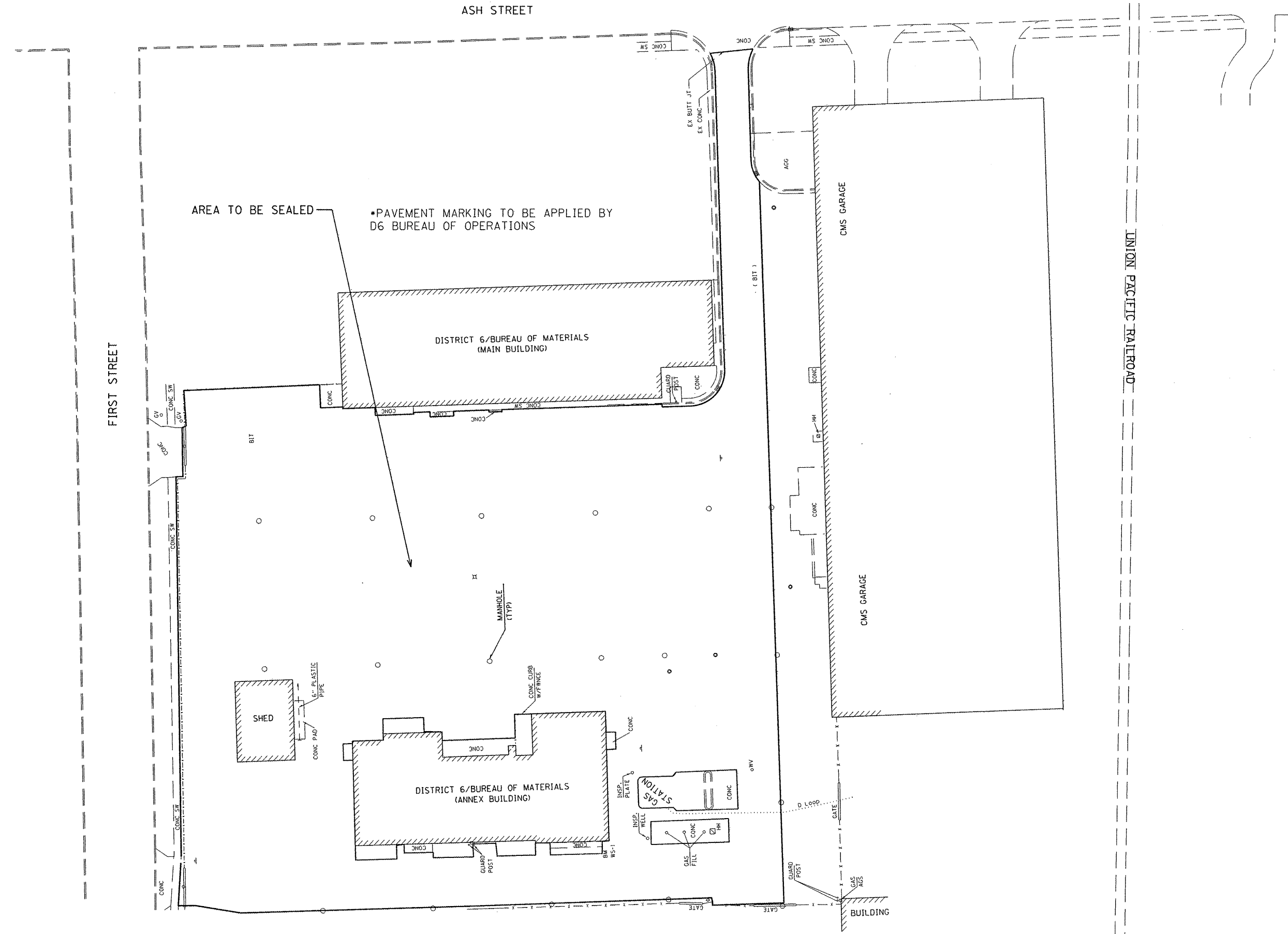
CODE NO	SUMMARY OF QUANTITIES		URBAN	TOTAL QUANTITY
	ITEM		UNIT 100% STATE 0005	
X0327308	PARKING LOT SEAL COAT		GALLON	2099
45100100	CRACK ROUTING (PAVEMENT)		FOOT	4000
45100200	CRACK FILLING		POUND	1400
67100100	MOBILIZATION		L SUM	1
78300100	PAVEMENT MARKING REMOVAL		SQ FT	250

FILE NAME =	USER NAME = Sparksgv	DESIGNED -	REVISED -	STATE OF ILLINOIS DEPARTMENT OF TRANSPORTATION	SUMMARY OF QUANTITIES				F.A. RTE.	SECTION	COUNTY	TOTAL SHEETS	SHEET NO.		
ct:\pwr\work\pwr\dot\sparksgv\d0265140\067	E42-sht-500.dgn	DRAWN -	REVISED -		SCALE:	SHEET NO.	OF	SHEETS	STA.	TO STA.	VAR	D6 SEAL COAT 2011-1	SANGAMON	6	3
	PLOT SCALE = 100.0000' / 1in.	CHECKED -	REVISED -		CONTRACT NO. 72E42										
	PLOT DATE = Apr-08-2011 02:23:56PM	DATE -	REVISED -		ILLINOIS FED. AID PROJECT										

PARKING LOT SEAL COAT SCHEDULE			
	SURFACE AREA	APPLICATION RATE	SEAL COAT
	SQ YD	GALLON/SQ YD	GALLON
FIRST APPLICATION	8074.8	0.13	1049.7
SECOND APPLICATION	8074.8	0.13	1049.7
TOTAL			2099

PAVEMENT MARKING REMOVAL SCHEDULE			
LOCATION	LENGTH	PAVT MARKING REMOVAL	AREA TO BE REMOVED
	FT	TYPE	SQ FT
HANDICAP STALLS & OTHER DESIGNATED AREAS	750.0	4" THERMOPLASTIC	250.0
TOTAL			250

FILE NAME :	USER NAME = Sparksgu	DESIGNED -	REVISED -	STATE OF ILLINOIS DEPARTMENT OF TRANSPORTATION	SCHEDULE OF QUANTITIES				F.A. RTE.	SECTION	COUNTY	TOTAL SHEETS	SHEET NO.		
ct:\pwork\p\idot\sparksgu\0265140\067	E42-sht-schedule.dgn	DRAWN -	REVISED -		SCALE:	SHEET NO.	OF	SHEETS	STA.	TO STA.	VAR	D6 SEAL COAT 2011-1	SANGAMON	6	4
	PLOT SCALE = 100.0000' / 1" =	CHECKED -	REVISED -												
	PLOT DATE = Apr-08-2011 02:24:07PM	DATE -	REVISED -												
											CONTRACT NO. 72E42				
											ILLINOIS FED. AID PROJECT				



AREA TO BE SEALED
 *PAVEMENT MARKING TO BE APPLIED BY
 D6 BUREAU OF OPERATIONS

DISTRICT 6/BUREAU OF MATERIALS
 (MAIN BUILDING)

DISTRICT 6/BUREAU OF MATERIALS
 (ANNEX BUILDING)

CMS GARAGE

CMS GARAGE

SHED

GAS STATION

BUILDING

FIRST STREET

ASH STREET

UNION PACIFIC RAILROAD

FILE NAME =	USER NAME = Sparksgv
ct:\pwwork\pwwork\sparksgv\d0265140\0672	E-shtr-plan.dgn
PLOT SCALE = 100.0000' / in.	
PLOT DATE = Apr-08-2011 02:24:15PM	

DESIGNED -	REVISED -
DRAWN -	REVISED -
CHECKED -	REVISED -
DATE -	REVISED -

STATE OF ILLINOIS
DEPARTMENT OF TRANSPORTATION

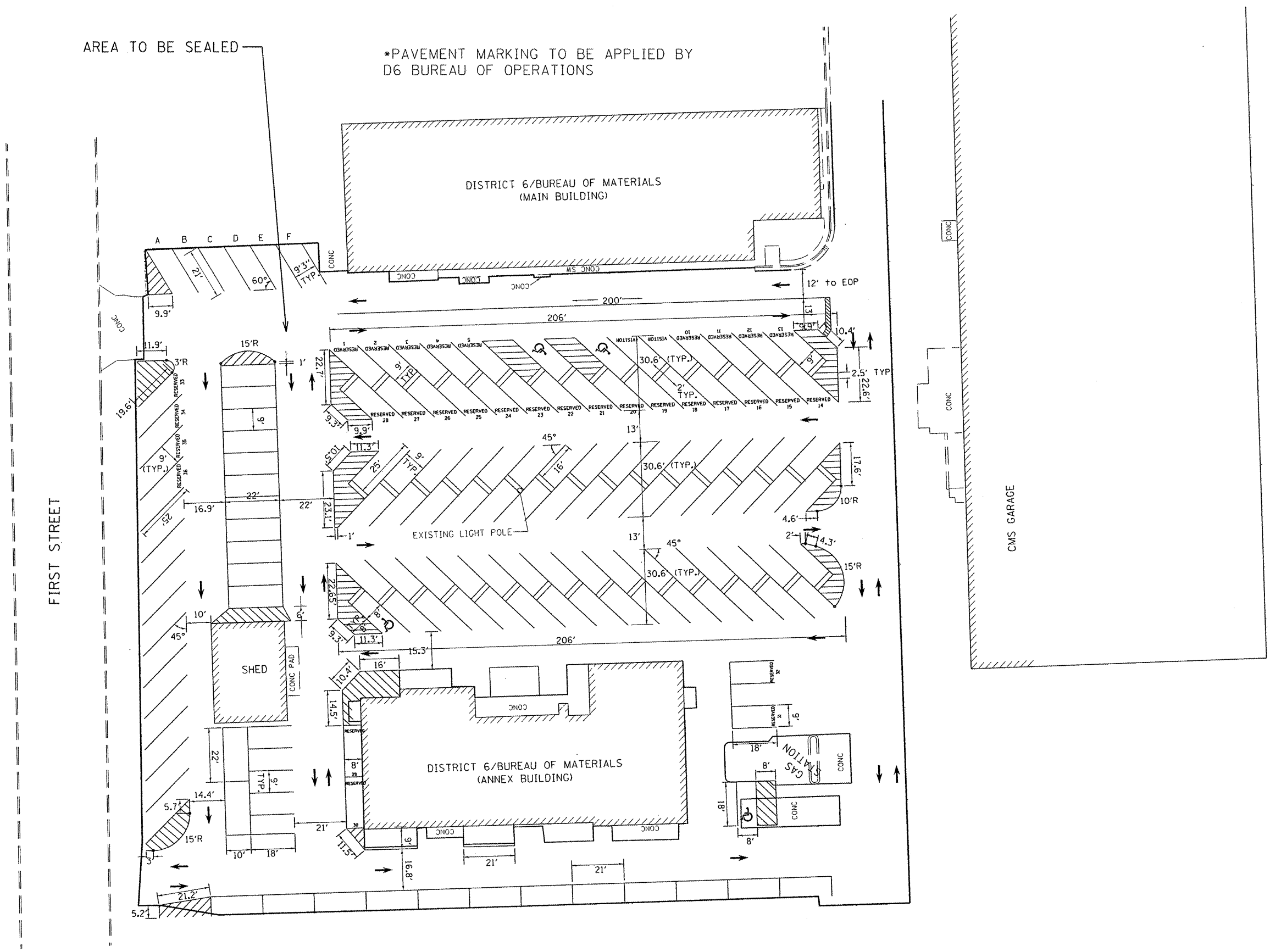
PLAN VIEW
SCALE: 1"=50'
SHEET NO. OF SHEETS STA. TO STA.

F.A. RTE.	SECTION	COUNTY	TOTAL SHEETS	SHEET NO.
VAR	D6 SEAL COAT 2011-1	SANGAMON	6	5
CONTRACT NO. 72E42				
ILLINOIS FED. AID PROJECT				



AREA TO BE SEALED

*PAVEMENT MARKING TO BE APPLIED BY D6 BUREAU OF OPERATIONS



FILE NAME =	USER NAME = Sparksgu	DESIGNED -	REVISED -
e:\pav\work\p\hidot\sparksgu\d0265140\067	E-shitplan.dgn	DRAWN -	REVISED -
		CHECKED -	REVISED -
		DATE -	REVISED -

**STATE OF ILLINOIS
DEPARTMENT OF TRANSPORTATION**

PAVEMENT MARKING

SCALE: SHEET NO. OF SHEETS STA. TO STA.

F.A. RTE.	SECTION	COUNTY	TOTAL SHEETS	SHEET NO.
VAR	D6 SEAL COAT 2011-1	SANGAMON	6	6
CONTRACT NO. 72E42			ILLINOIS FED. AID PROJECT	