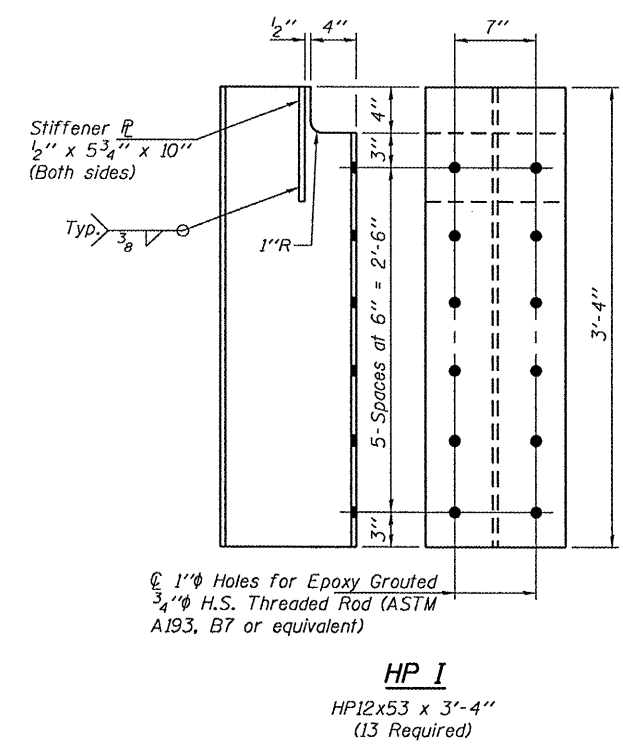
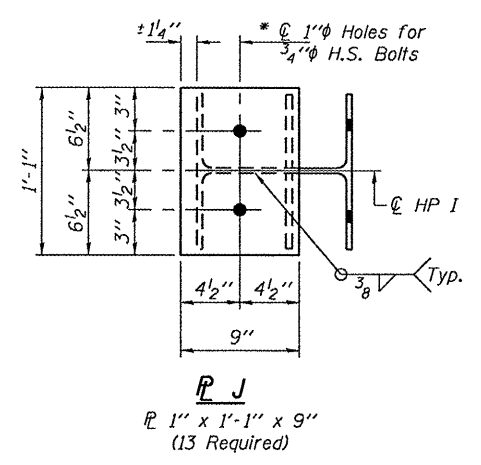


\* Use holes in Support Beam to field drill holes in L H & PL J.



DESIGNED - ADY	EXAMINED - <i>Joey F. Jaffe</i>	DATE - MAY 9, 2011
CHECKED - ATH	ACTING ENGINEER OF STRUCTURAL SERVICES	
DRAWN - Kyle M. Steffen	PASSED - <i>Carl Perry</i>	
CHECKED - ADY ATH	ACTING ENGINEER OF BRIDGES AND STRUCTURES	

**STATE OF ILLINOIS  
 DEPARTMENT OF TRANSPORTATION**

**REPAIR DETAILS  
 SN 054-0008**

SHEET NO. 3 OF 3 SHEETS

F.A.P. RTE.	SECTION	COUNTY	TOTAL SHEETS	SHEET NO.
717	D6 BRIDGE SUPPORT 2011	LOGAN	6	6
CONTRACT NO. 72E50			ILLINOIS FED. AID PROJECT	