

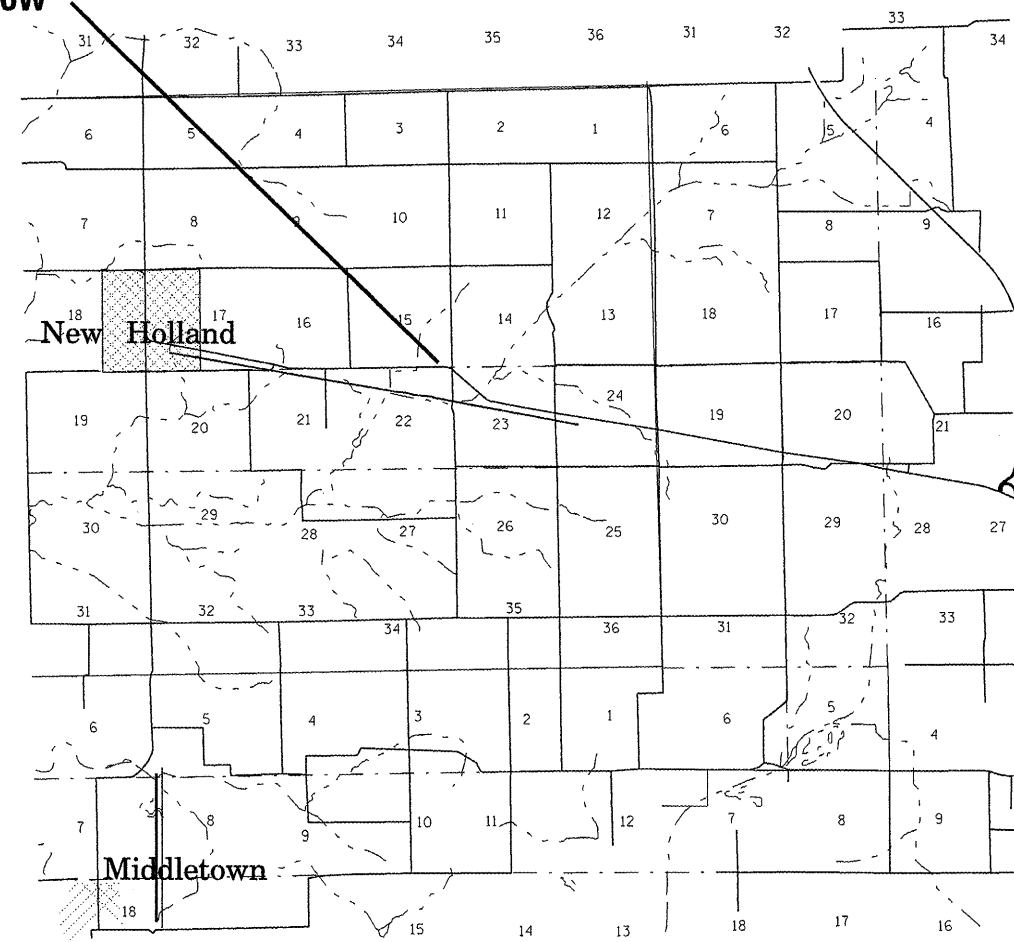
FOR INDEX OF SHEETS AND HIGHWAY
STANDARDS, SEE SHEET 2.

STATE OF ILLINOIS
DEPARTMENT OF TRANSPORTATION
DIVISION OF HIGHWAYS

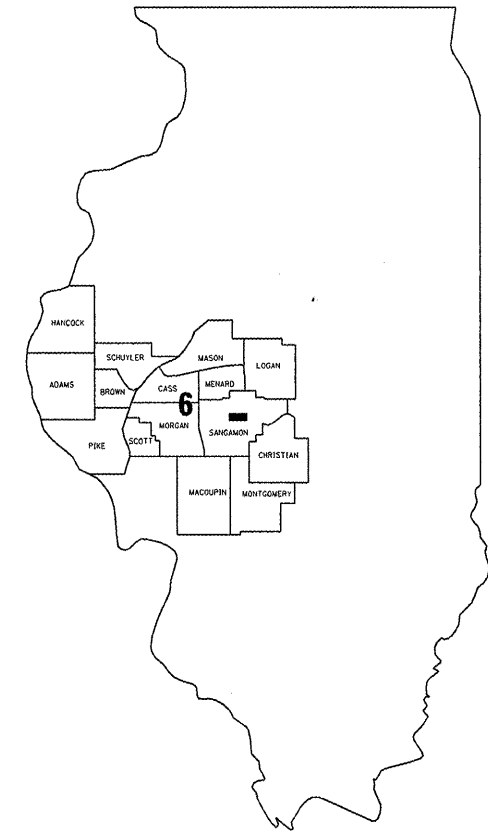
CONTRACT: 72E50
SHEET 1 OF 6

**PROPOSED
HIGHWAY PLANS
FAP ROUTE 717 (IL 10)
SECTION D6 BRIDGE SUPPORT 2011
LOGAN COUNTY
C-96-082-11**

SN 054-0008 - IL 10 OVER SUGAR CREEK OVERFLOW



NET LENGTH OF SEC 132 FT=0.025 MILE



LOCATION OF SECTION INDICATED THUS: ■

**J. U. L. I. E.
JOINT UTILITY LOCATION INFORMATION FOR EXCAVATION
1-800-892-0123**

BRIDGE INSPECTION ENGINEER: DAVE COPENBARGER
PHONE: (217) 785-5306
BRIDGE MAINTENANCE ENGINEER: STEVE BERAN
PHONE: (217) 785-9290

CONTRACT NO. 72E50

STATE OF ILLINOIS
DEPARTMENT OF TRANSPORTATION
DIVISION OF HIGHWAYS

SUBMITTED April 27 20 11

Reggie Z. Dinkler
DEPUTY DIRECTOR OF HIGHWAYS, REGION FOUR ENGINEER

May 13 20 11

Scott E. Stitt, P.E. /sr
acting ENGINEER OF DESIGN AND ENVIRONMENT

May 13 20 11

Christine M. Reed /sr
DIRECTOR, DIVISION OF HIGHWAYS

INDEX OF SHEETS:

- 1 COVER SHEET
- 2 INDEX, HIGHWAY STANDARDS, & GENERAL NOTES
- 3 SUMMARY OF QUANTITIES
- 4-6 BRIDGE SUPPORT PLANS

STANDARDS

- 701001-02
- 701006-03
- 701106-02
- 701201-04
- 701301-04
- 701901-01

GENERAL NOTES:

PLAN DIMENSIONS AND DETAILS RELATIVE TO EXISTING STRUCTURE HAVE BEEN TAKEN FROM EXISTING PLANS AND ARE SUBJECT TO NOMINAL CONSTRUCTION VARIATIONS. IT SHALL BE THE CONTRACTOR'S RESPONSIBILITY TO VERIFY SUCH DIMENSIONS AND DETAILS IN THE FIELD AND MAKE NECESSARY APPROVED ADJUSTMENTS PRIOR TO CONSTRUCTION OR ORDERING OF MATERIALS. SUCH VARIATIONS SHALL NOT BE CAUSE FOR ADDITIONAL COMPENSATION OR A CHANGE IN THE SCOPE OF THE WORK. HOWEVER, THE CONTRACTOR WILL BE PAID FOR THE QUANTITY ACUTALLY FURNISHED AT THE UNIT PRICE FOR THE WORK.

STATE OF ILLINOIS DEPARTMENT OF TRANSPORTATION DIVISION OF HIGHWAYS DISTRICT 6	
EXAMINED <u>April 27</u> 20 <u>11</u>	<u>Oil Walker</u> ENGINEER OF OPERATIONS
EXAMINED <u>APRIL 25</u> 20 <u>11</u>	<u>Jimmy F. L.</u> ENGINEER OF PROJECT IMPLEMENTATION
EXAMINED <u>APRIL 27</u> 20 <u>11</u>	<u>John C. W. Raymond</u> ENGINEER OF PROGRAM DEVELOPMENT

INDEX, STANDARDS, & NOTES
FAP 717 (IL 10)
D6 SUPPORT 2011
LOGAN COUNTY

S U M M A R Y O F Q U A N T I T I E S

CODE NO.	ITEM	UNIT	100% STATE
			0014
			TOTAL QTY
67100100	MOBILIZATION	L SUM	1
70100450	TRAFFIC CONTROL AND PROTECTION, STANDARD 701201	L SUM	1
50500405	FURNISHING AND ERECTING STRUCTURAL STEEL	POUND	57,810

QUANTITIES
FAP 717 (IL 10)
D6 SUPPORT 2011
LOGAN COUNTY

* Contractor is to verify beam length prior to ordering material. Other sections meeting the section modulus requirements shown may be allowed subject to approval by the Bureau of Bridges and Structures. Maximum Girder depth = 30". No additional payment will be allowed if the Contractor chooses a heavier steel section than the one specified in the plans. (Min. Sx = 310 in.³)

GENERAL NOTES

All structural steel shall conform to AASHTO Classification M-270 Gr. 36, unless otherwise noted.

Plan dimensions and details relative to existing plans are subject to nominal construction variations. The Contractor shall field verify existing dimensions and details affecting new construction and make necessary approved adjustments prior to construction or ordering of materials. Such variations shall not be cause for additional compensation for a change in scope of the work, however, the Contractor will be paid for the quantity actually furnished at the unit price bid for the work.

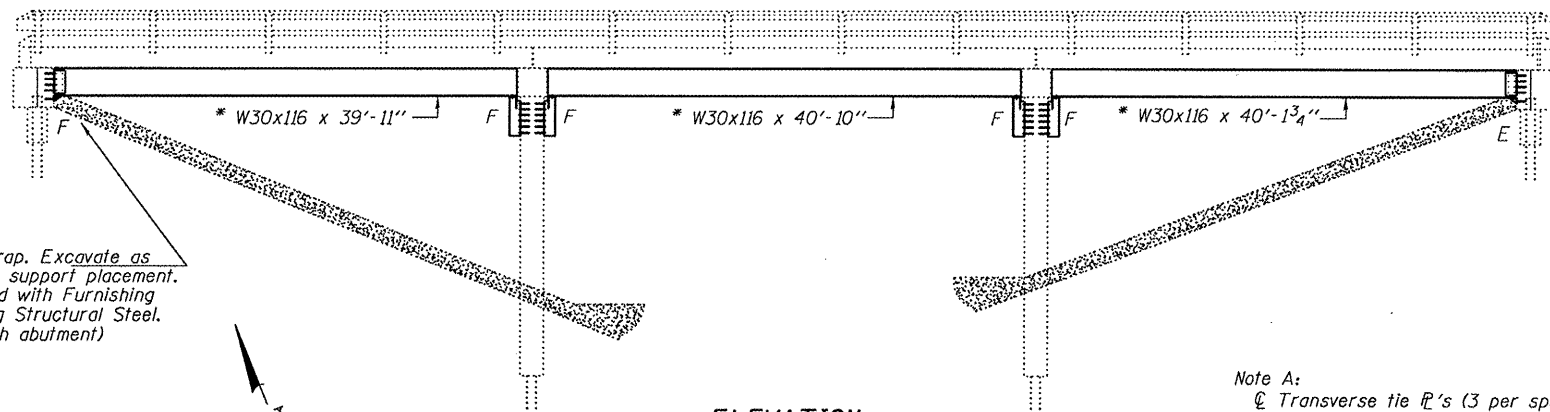
The contractor is advised that the existing PPC Deck Beams are in a deteriorated condition with reduced load carrying capacity. It is the contractors responsibility to account for the condition of the beams when developing construction procedures.

See Section 584 of the Standard Specifications for Epoxy Grouting of Threaded Rods; Minimum embedment 9".

If the contractor's procedure for placement of beams involves placement of cranes or other heavy equipment on the bridge, a detailed procedure shall be submitted to the Engineer for approval. The procedure shall include calculations, prepared and sealed by an Illinois Licensed Structural Engineer, verifying that the equipment and procedure used will not overstress the existing beams. To distribute load to multiple beams and protect the existing surface, in all cases a double layer mat of heavy timbers shall be used at all times under crane tracks or wheels and any outriggers in the down position. If necessary, shims shall be used under the crane mat to ensure uniform contact with the underlying beams.

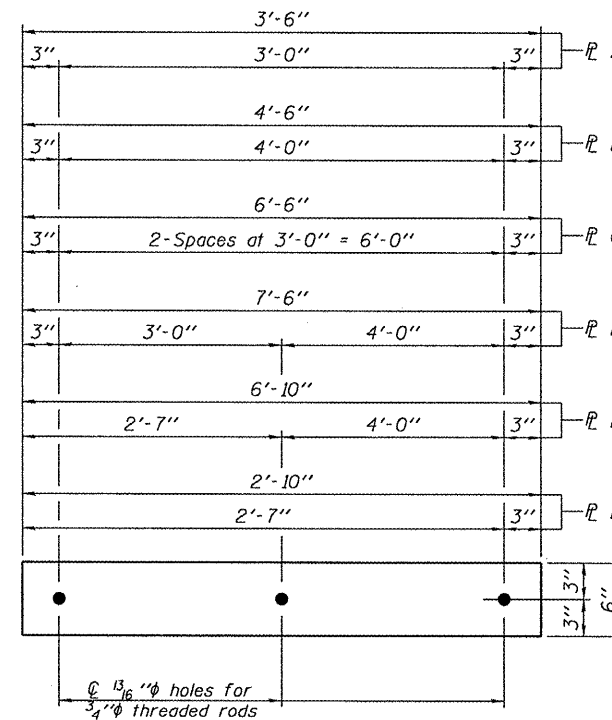
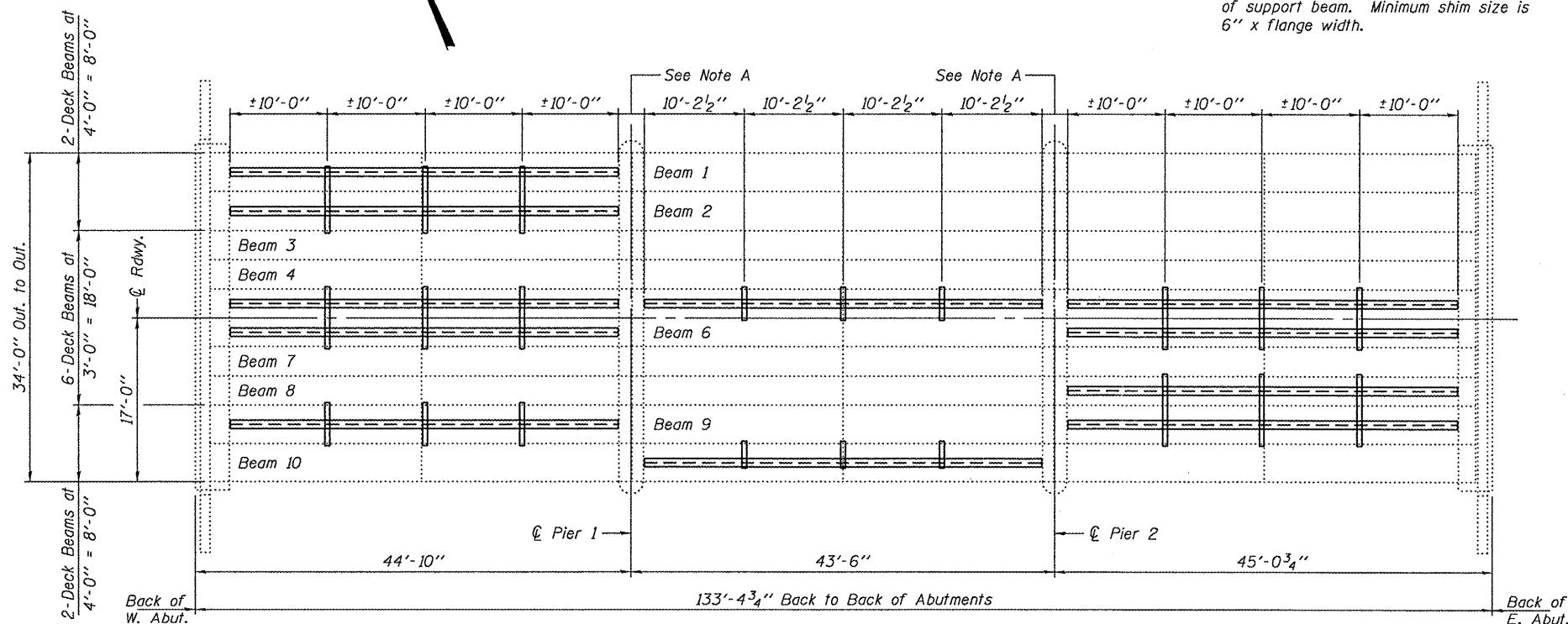
The cost of epoxy grouting threaded rods on the abutments and beams shall be included with Furnishing and Erecting Structural Steel.

The Contractor has the option of using used steel. See Special Provisions..



Existing riprap. Excavate as required for support placement. Cost included with Furnishing and Erecting Structural Steel. (Typ. at each abutment)

Note A:
 ☉ Transverse tie R's (3 per span). Place additional shims at midpoints between tie R's. Securely weld shims to top flange of support beam. Minimum shim size is 6" x flange width.



TRANSVERSE TIE R'S

- R A 1/2" x 3'-6" x 6" (3 Req'd)
- R B 1/2" x 4'-6" x 6" (3 Req'd)
- R C 1/2" x 6'-6" x 6" (6 Req'd)
- R D 1/2" x 7'-6" x 6" (3 Req'd)
- R E 1/2" x 6'-10" x 6" (3 Req'd)
- R F 1/2" x 2'-10" x 6" (3 Req'd)

TOTAL BILL OF MATERIAL

ITEM	UNIT	QUANTITY
Furnishing and Erecting Structural Steel	Pound	58,240



Expires: November 30, 2012

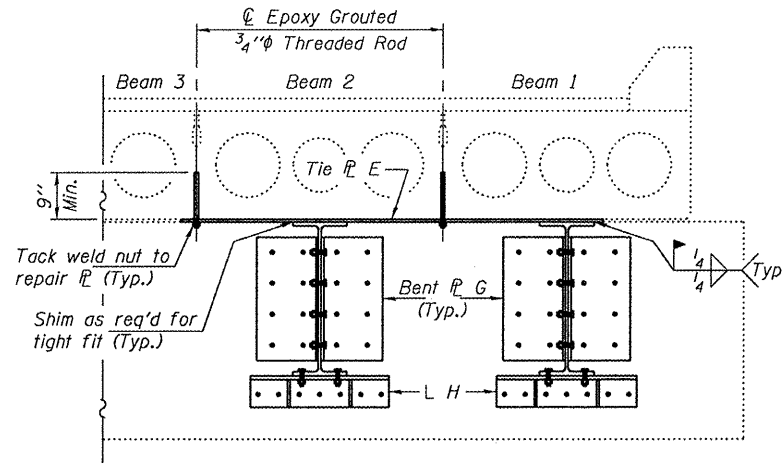
DESIGNED - <i>W. Vance</i>	EXAMINED - <i>Jay F. Schmitt</i>	DATE - MAY 9, 2011
CHECKED - <i>W. T. Halloway</i>	PASSED - <i>Kyle M. Steffen</i>	
DRAWN - <i>Kyle M. Steffen</i>		
CHECKED - <i>ADY</i>		

STATE OF ILLINOIS
DEPARTMENT OF TRANSPORTATION

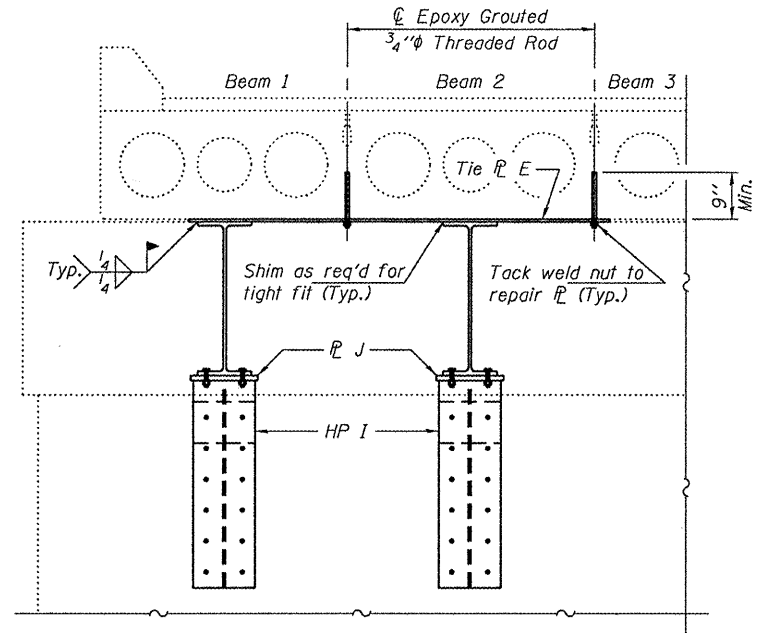
GENERAL PLAN & ELEVATION
ILLINOIS ROUTE 10 OVER SUGAR CREEK FLOOD PLAIN
SN 054-0008

F.A.P. RTE.	SECTION	COUNTY	TOTAL SHEETS	SHEET NO.
717	D6 BRIDGE SUPPORT 2011	LOGAN	6	4
CONTRACT NO. 72E50			ILLINOIS FED. AID PROJECT	

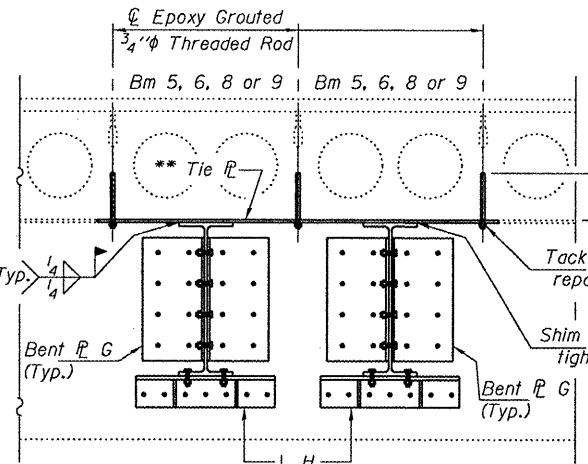
SHEET NO. 1 OF 3 SHEETS



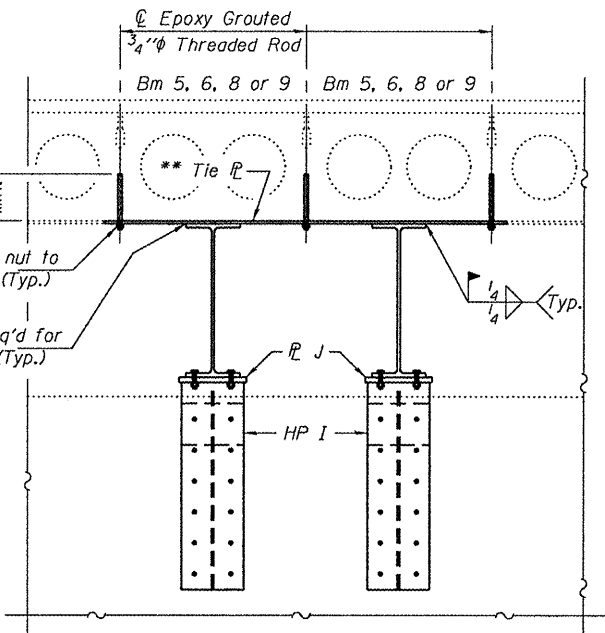
**SECTION THRU SPAN 1,
BEAMS 1 & 2 AT W. ABUT.**



**SECTION THRU SPAN 1,
BEAMS 1 & 2 AT PIER 1**



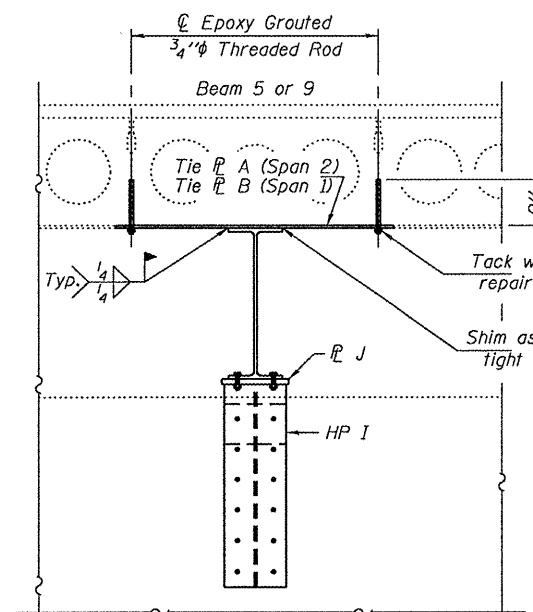
**SECTION THRU SPAN 1, BEAMS 5 & 6
AND SPAN 3, BEAMS 5 & 6 AND
BEAMS 8 & 9 AT ABUTMENTS**



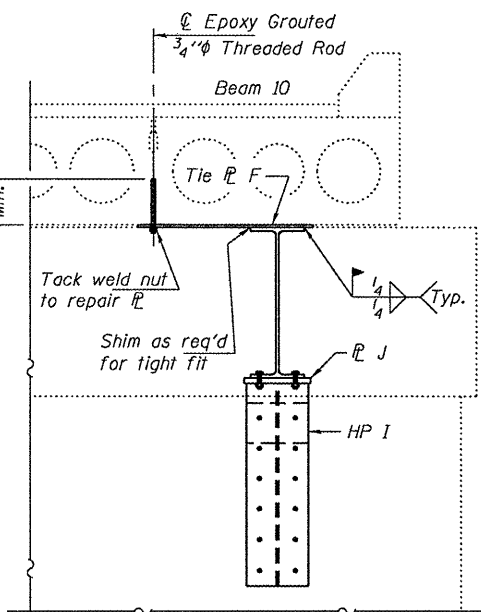
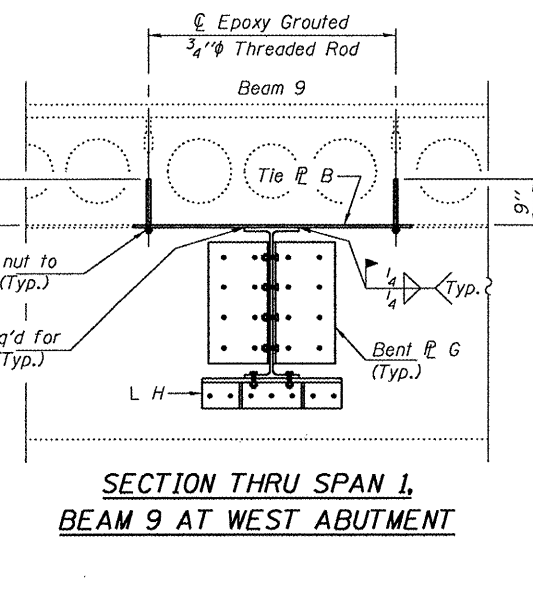
**SECTION THRU SPAN 1, BEAMS 5 & 6
AND SPAN 3, BEAMS 5 & 6 AND
BEAMS 8 & 9 AT PIERS**

* Use holes in Support Beam to field drill holes in L H & R J.

** Tie R C (Spans 1 & 3, Beams 5 & 6)
Tie R D (Span 3, Beams 8 & 9)

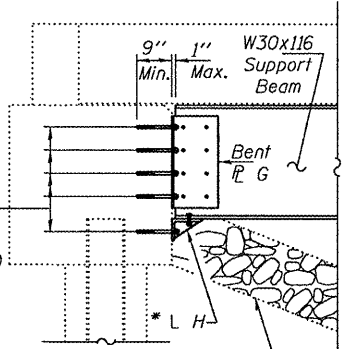


**SECTION THRU SPAN 1,
BEAM 9 AT WEST ABUTMENT**



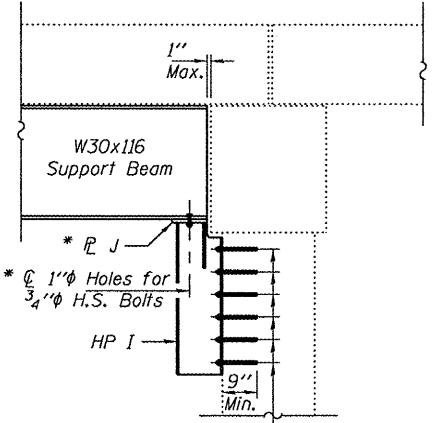
**SECTION THRU SPAN 2,
BEAM 10 AT PIERS**

**SECTION THRU SPAN 1, BEAM 9
& SPAN 2, BEAM 5 AT PIERS**



Excavate riprap as required to facilitate installation of W30x116 Support Beam. Cost included with Furnishing & Erecting Structural Steel. (Typical at each abutment.)

TYPICAL SECTION THRU ABUT.



Excavate riprap as required to facilitate installation of W30x116 Support Beam. Cost included with Furnishing & Erecting Structural Steel. (Typical at each pier.)

TYPICAL SECTION THRU PIERS

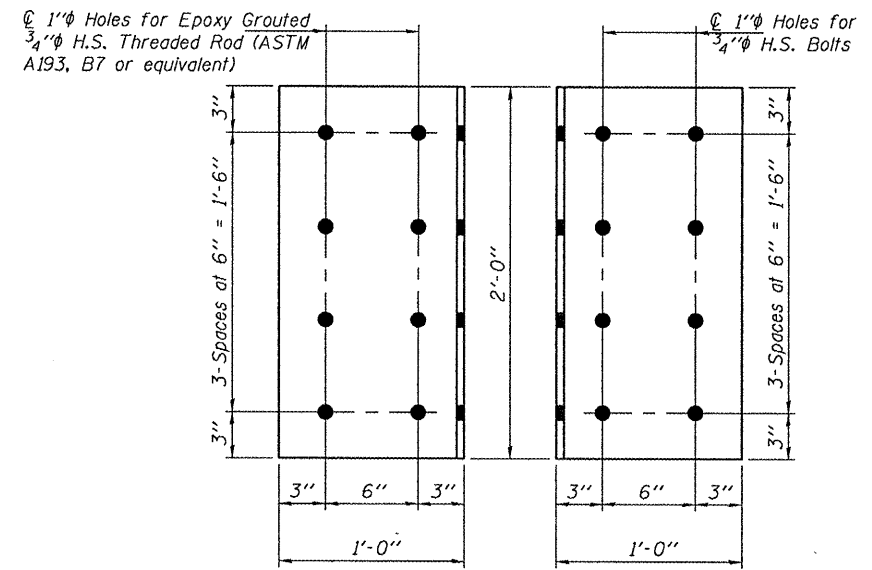
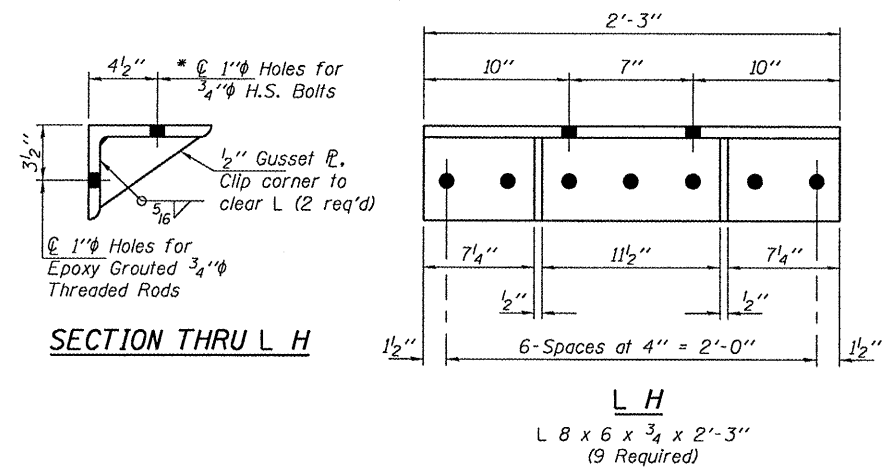
DESIGNED - ADY	EXAMINED	DATE - MAY 9, 2011
CHECKED - ATH	<i>Jaime F. Jaffe</i> ACTING ENGINEER OF STRUCTURAL SERVICES	
DRAWN - Kyle M. Steffen	PASSED	
CHECKED - ADY ATH	<i>Carl P. Jones</i> ACTING ENGINEER OF BRIDGES AND STRUCTURES	

**STATE OF ILLINOIS
DEPARTMENT OF TRANSPORTATION**

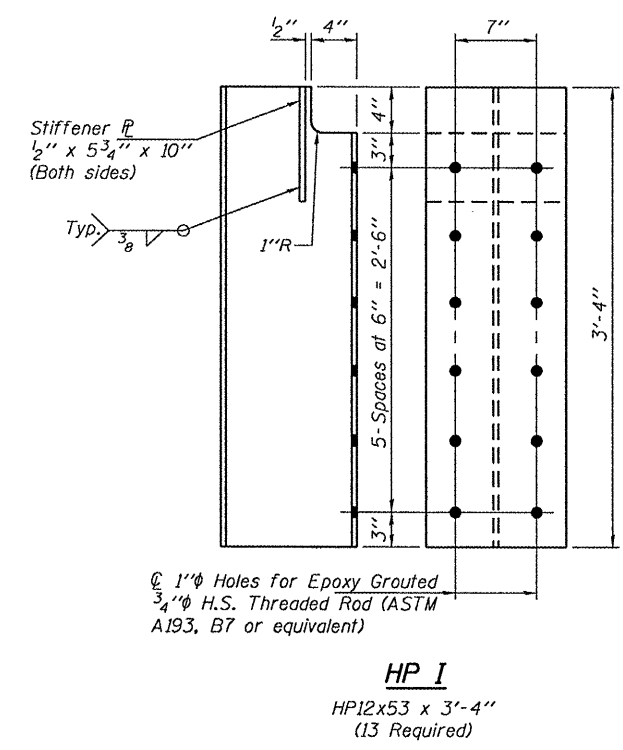
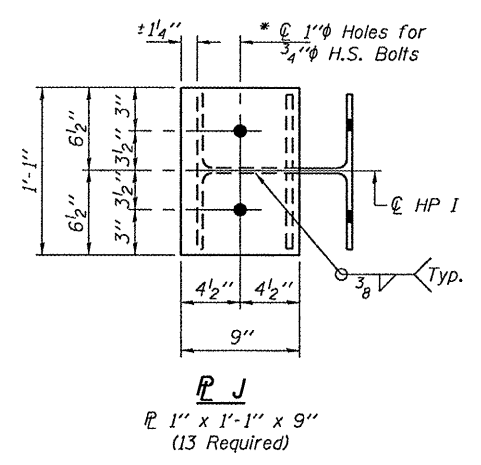
**P.P.C. DECK BEAM SUPPORT DETAILS
SN 054-0008**

SHEET NO. 2 OF 3 SHEETS

F.A.P. RTE.	SECTION	COUNTY	TOTAL SHEETS	SHEET NO.
717	D6 BRIDGE SUPPORT 2011	LOGAN	6	5
CONTRACT NO. 72E50			ILLINOIS FED. AID PROJECT	



* Use holes in Support Beam to field drill holes in L H & P J.



DESIGNED - ADY	EXAMINED - <i>Joey F. Jelliffe</i>	DATE - MAY 9, 2011
CHECKED - ATH	ACTING ENGINEER OF STRUCTURAL SERVICES	
DRAWN - Kyle M. Steffen	PASSED - <i>Carl Perry</i>	
CHECKED - ADY ATH	ACTING ENGINEER OF BRIDGES AND STRUCTURES	

**STATE OF ILLINOIS
DEPARTMENT OF TRANSPORTATION**

**REPAIR DETAILS
SN 054-0008**

SHEET NO. 3 OF 3 SHEETS

F.A.P. RTE.	SECTION	COUNTY	TOTAL SHEETS	SHEET NO.
717	D6 BRIDGE SUPPORT 2011	LOGAN	6	6
CONTRACT NO. 72E50				
ILLINOIS FED. AID PROJECT				