

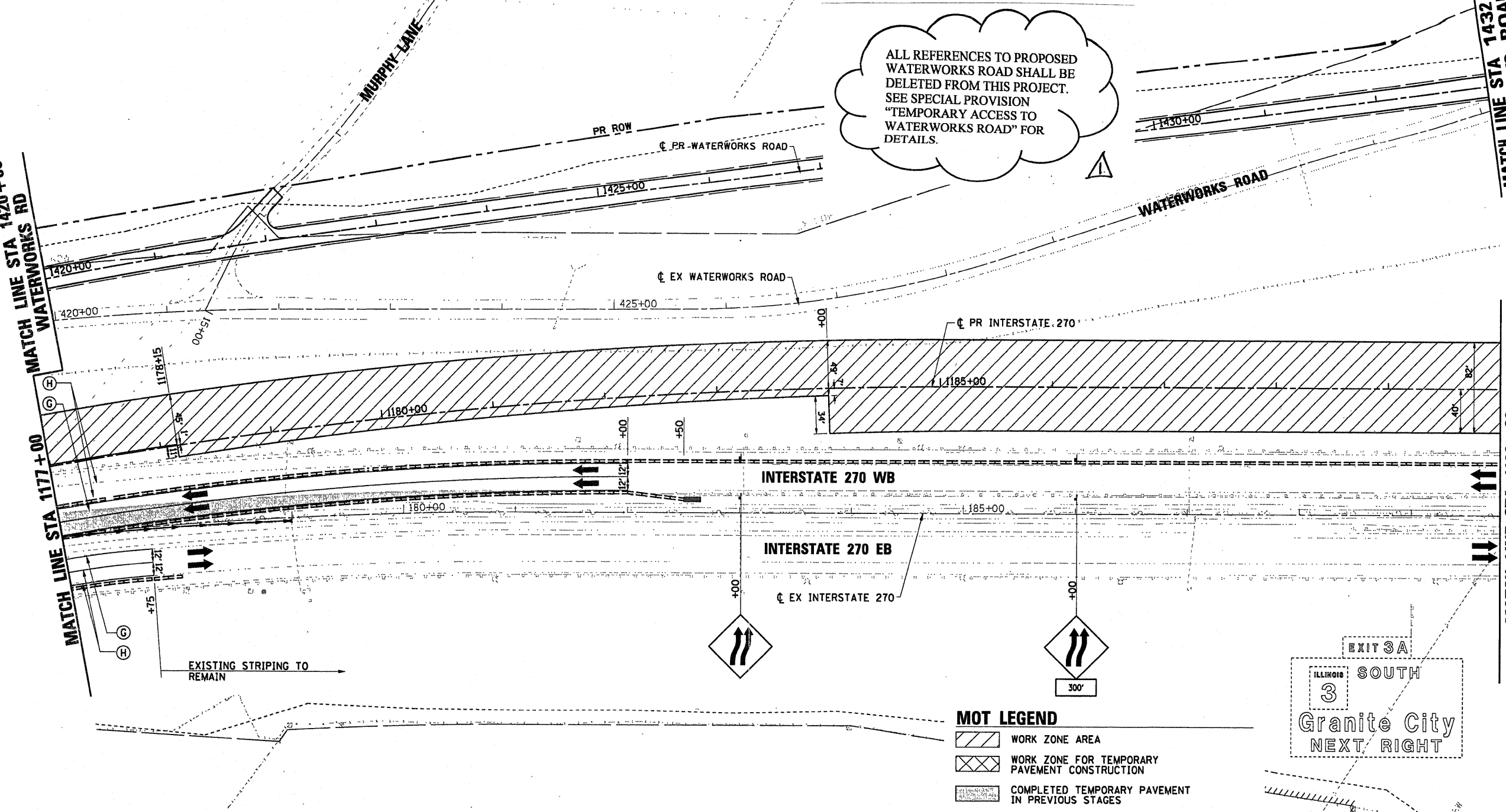
ALL REFERENCES TO PROPOSED WATERWORKS ROAD SHALL BE DELETED FROM THIS PROJECT. SEE SPECIAL PROVISION "TEMPORARY ACCESS TO WATERWORKS ROAD" FOR DETAILS.

MATCH LINE STA 1420+00
WATERWORKS RD

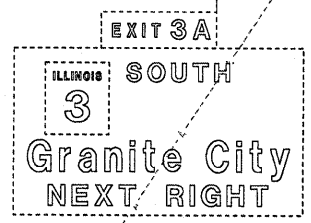
MATCH LINE STA 1432+00
WATERWORKS ROAD

MATCH LINE STA 1190+00

MATCH LINE STA 1177+00



EXISTING STRIPING TO REMAIN



MOT PAVEMENT MARKING LEGEND

- | | |
|---|---|
| (A) TEMP PVT MK LINE 4 (SOLID YELLOW) | (I) EPOXY PVT MK LINE 4 (SKIP-DASH, WHITE, 10' DASH, 30' SKIP) |
| (B) TEMP PVT MK LINE 4 (SOLID WHITE) | (J) NOT USED |
| (C) TEMP PVT MK LINE 4 (SKIP-DASH, WHITE, 10' DASH, 30' SKIP) | (K) WET PAVT TAPE T3 4 (SOLID YELLOW) |
| (D) NOT USED | (L) WET PAVT TAPE T3 4 (SOLID WHITE) |
| (E) TEMP PVT MK LINE 24 (SOLID WHITE) | (M) WET PAVT TAPE T3 4 (SOLID WHITE) (SKIP-DASH, WHITE, 10' DASH, 30' SKIP) |
| (F) TEMP PVT MK LTR & SYM (SOLID WHITE) | (N) WET PAVT TAPE T3 6 (SOLID WHITE) |
| (G) EPOXY PVT MK LINE 4 (SOLID YELLOW) | (O) WET PAVT TAPE T3 24 (SOLID WHITE) |
| (H) EPOXY PVT MK LINE 4 (SOLID WHITE) | |

MOT LEGEND

- WORK ZONE AREA
- WORK ZONE FOR TEMPORARY PAVEMENT CONSTRUCTION
- COMPLETED TEMPORARY PAVEMENT IN PREVIOUS STAGES
- IMPACT ATTENUATOR
- DIRECTION OF TRAFFIC
- TEMPORARY CONCRETE BARRIER
- SIGN ON PORTABLE OR PERMANENT SUPPORT
- TYPE III BARRICADES
- TYPE II WITH STEADY BURNING MONODIRECTIONAL LIGHT *
- MESSAGE BOARD

* DRUM OR BARRICADE SPACING:
 50' C-C ON TANGENTS
 25' C-C ON TAPERS OR LANE SHIFTS
 12' C-C ON RADII'S OR RAMP
 5' C-C FOR RAMP OR ROAD CLOSURES

FILE NAME = D876A91-Sht-MOT83-04.dgn	USER NAME = abliven	DESIGNED - JC	REVISED - 04-20-11	STATE OF ILLINOIS DEPARTMENT OF TRANSPORTATION	SUGGESTED MAINTENANCE OF TRAFFIC STAGE 3 INTERSTATE 270	F.A.I. RTE. 270	SECTION 60-1B-1	COUNTY MADISON	TOTAL SHEETS 712	SHEET NO. 140		
PLOT SCALE = #SCALE#	CHECKED - BH	REVISED - 07/11 ADD. Δ	SCALE: 1" = 50'			SHEET NO. 4 OF 11 SHEETS	STA. TO STA.	CONTRACT NO. 76A91				
PLOT DATE = 4/20/2011	DATE -	REVISED -	ILLINOIS FED. AID PROJECT									