

ALL REFERENCES TO PROPOSED WATERWORKS ROAD SHALL BE DELETED FROM THIS PROJECT. SEE SPECIAL PROVISION "TEMPORARY ACCESS TO WATERWORKS ROAD" FOR DETAILS.

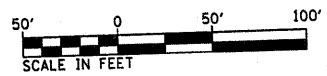
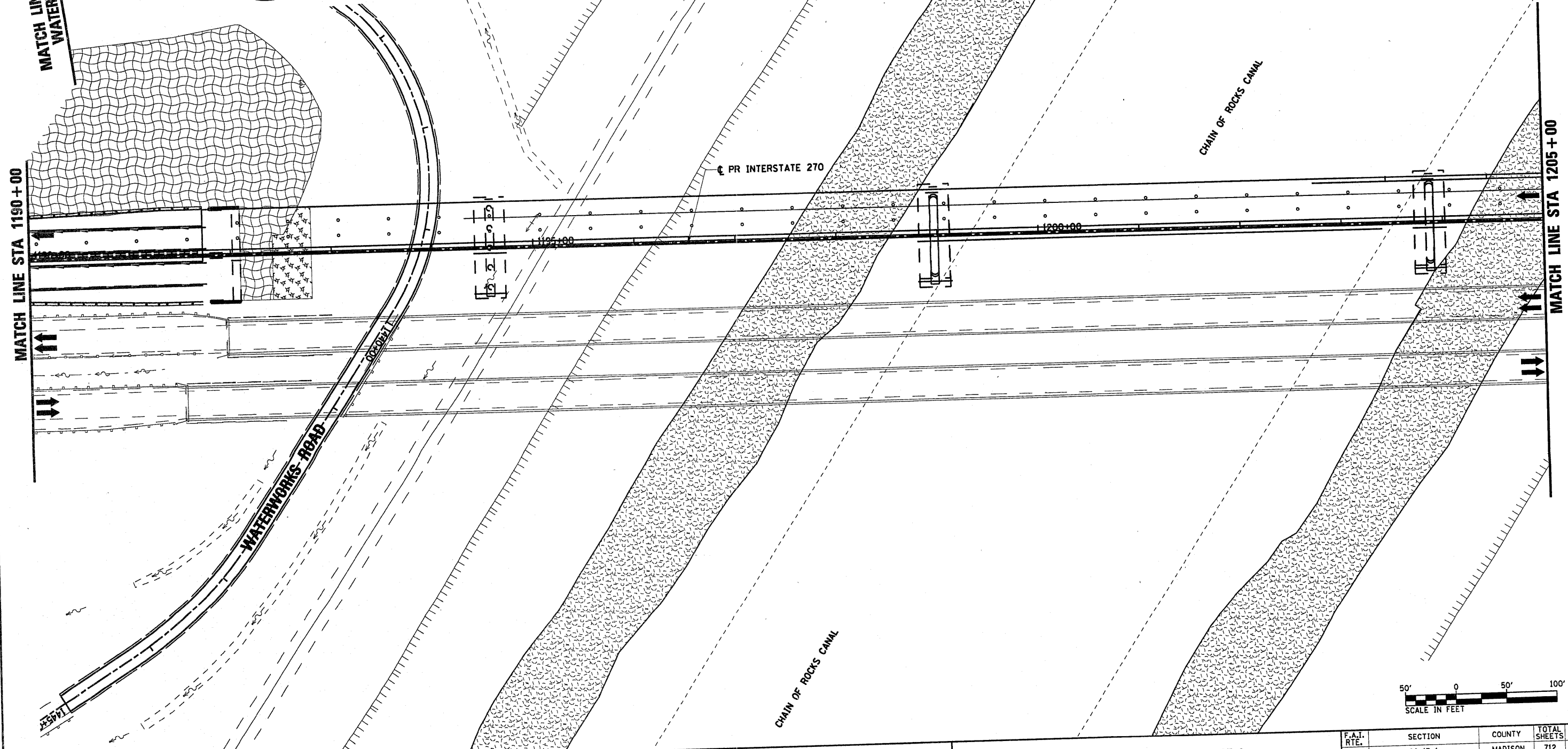
NOTE:
FINAL SEEDING AREAS ARE SHOWN BY STAGE AND TYPE.
- SEEDING CLASS 2A SHALL BE USED WITH MULCH METHOD 2 ON SIDE SLOPES FLATTER THAN 1:3 (V:H).
- SEEDING CLASS 3A SHALL BE USED WITH EROSION CONTROL BLANKET ON 1:3 (V:H) OR STEEPER SLOPES.
- SEEDING, SPECIAL SHALL BE USED ON LEVEE AREAS AS SHOWN.
TWO APPLICATIONS OF TEMPORARY SEEDING WITH MULCH METHOD 2 IS ALSO QUANTIFIED AND INCLUDED IN THE SEEDING SCHEDULE FOR ALL AREAS.

| LEGEND | |
|--------|---|
| | PERIMETER EROSION BARRIER |
| | INLET AND PIPE PROTECTION |
| | CLASS 2A SEEDING (WITH MULCH METHOD 2) |
| | TEMPORARY DITCH CHECKS |
| | CLASS 3A SEEDING (WITH EROSION CONTROL BLANKET) |
| | SEEDING, SPECIAL |
| | SEEDING, SPECIAL (WITH EROSION CONTROL BLANKET) |

MATCH LINE STA 1433+50
WATERWORKS ROAD

MATCH LINE STA 1190+00

MATCH LINE STA 1205+00



FILE NAME =
D876A91-Shr-Eros-03-04.dgn
VOLKERT

USER NAME = untitled
PLOT SCALE = 1/8" = 100'-0" / IN.
PLOT DATE = 3/15/2011

DESIGNED - MPW
DRAWN - CJS
CHECKED - PMK
DATE - 3/18/2011

REVISED - 6/7/11 ADD. Δ
REVISED -
REVISED -
REVISED -

STATE OF ILLINOIS
DEPARTMENT OF TRANSPORTATION

EROSION CONTROL PLAN - STAGE 3

SCALE: 1" = 50' SHEET NO. 19 OF 38 SHEETS STA. 1190+00 TO STA. 1205+00

| F.A.I. RTE. | SECTION | COUNTY | TOTAL SHEETS | SHEET NO. |
|---------------------------|---------|---------|--------------|-----------|
| 270 | 60-1B-1 | MADISON | 712 | 230 |
| CONTRACT NO. 76A91 | | | | |
| ILLINOIS FED. AID PROJECT | | | | |